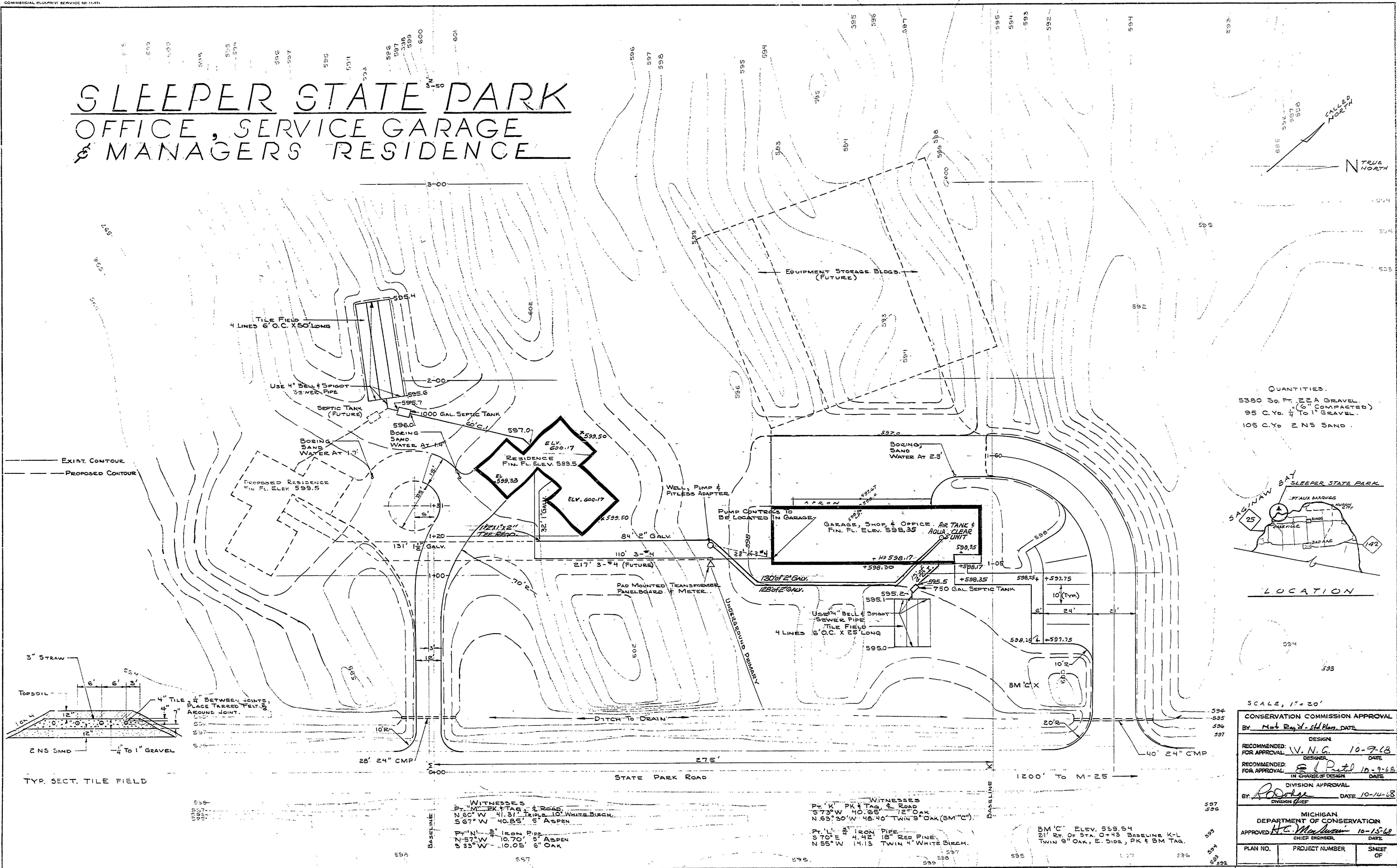
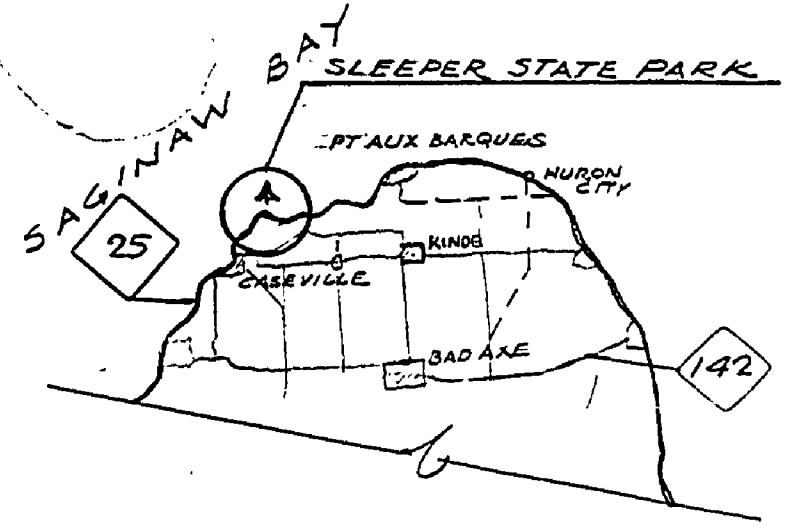


SLEEPER STATE PARK OFFICE, SERVICE GARAGE & MANAGERS RESIDENCE



QUANTITIES.
5380 Sq. Ft. 2 1/2" A GRAVEL (6" COMPACTED)
95 C.Y. 4" TO 1" GRAVEL.
105 C.Y. 2 NS SAND.



SCALE, 1" = 20'

CONSERVATION COMMISSION APPROVAL	
BY: <i>Not Required - sld plan</i>	DATE:
DESIGN	
RECOMMENDED FOR APPROVAL: <i>V.N.G.</i>	DATE: 10-7-68
DESIGNER:	DATE:
RECOMMENDED FOR APPROVAL: <i>R. P. ...</i>	DATE: 10-9-68
IN CHARGE OF DESIGN:	DATE:
DIVISION APPROVAL	
BY: <i>R. ...</i>	DATE: 10-14-68
MICHIGAN DEPARTMENT OF CONSERVATION	
APPROVED: <i>H. ...</i>	DATE: 10-15-68
CHIEF ENGINEER:	DATE:
PLAN NO.	PROJECT NUMBER
	SHEET OF

SURVEYED BY	DRAWN BY <i>J.Y. F.R.</i>	NO. DATE BY	REVISIONS	NO. DATE BY	REVISIONS	MICHIGAN DEPARTMENT OF CONSERVATION	SLEEPER STATE PARK OFFICE, SERVICE GARAGE & MANAGERS RESIDENCE	SHEET NO. 1 OF 8
DESIGNED BY	CHECKED BY <i>H.G.H. M.N.G.</i>	1. 8-2-69 <i>J.M.W.</i>	Water Service	3.				FOR PROJECT NO. PA108,5126,300,067
DATE	DATE	2.		4.				SHEET 1 OF 1 PLAN NO. A111, A112