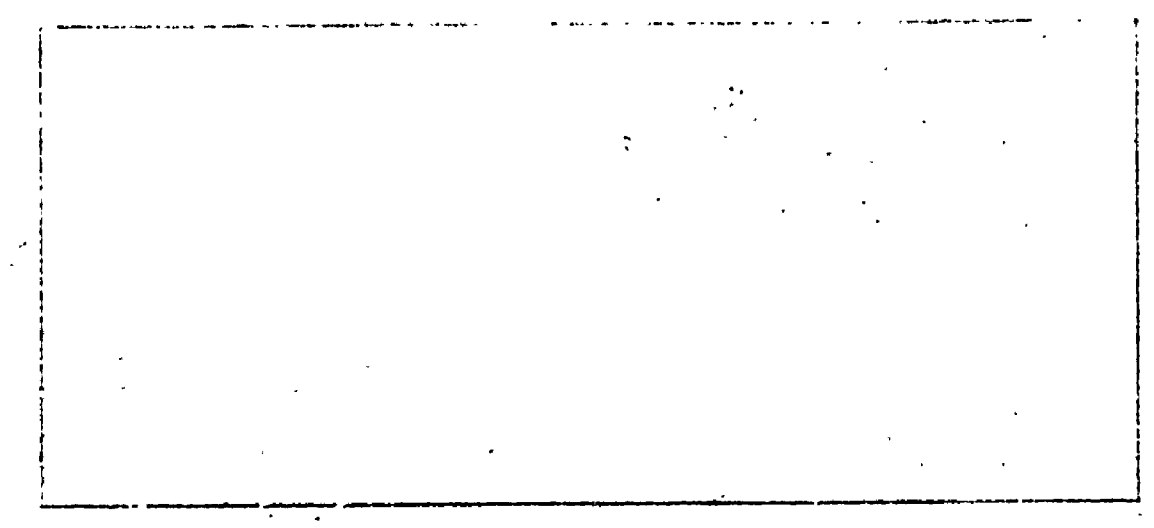


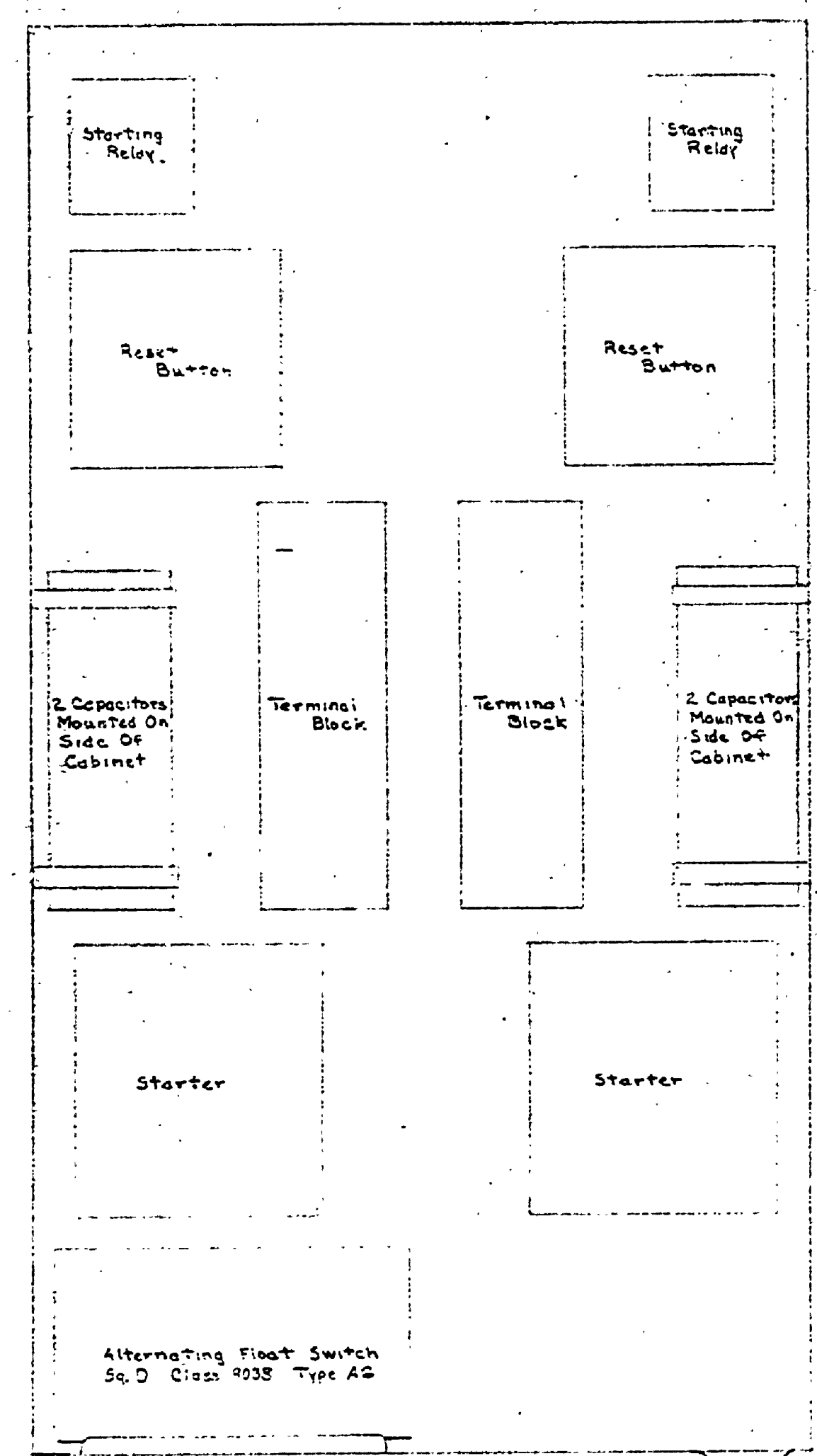
REVISIONS	NO.	DATE	BY
1	1		
2	2		
3	3		
4	4		
5	5		
6	6		

REVIEWED BY SECTIONS	DATE	APPROVED BY
ARCHITECTURAL	J.I.R. 8-4-60	<i>[Signature]</i> ASSISTANT CHIEF IN CHARGE OF DESIGN DATE 8-7-60
ENGINEERING	J.I.R. 8-7-60	
LANDSCAPE	J.I.R. 8-7-60	

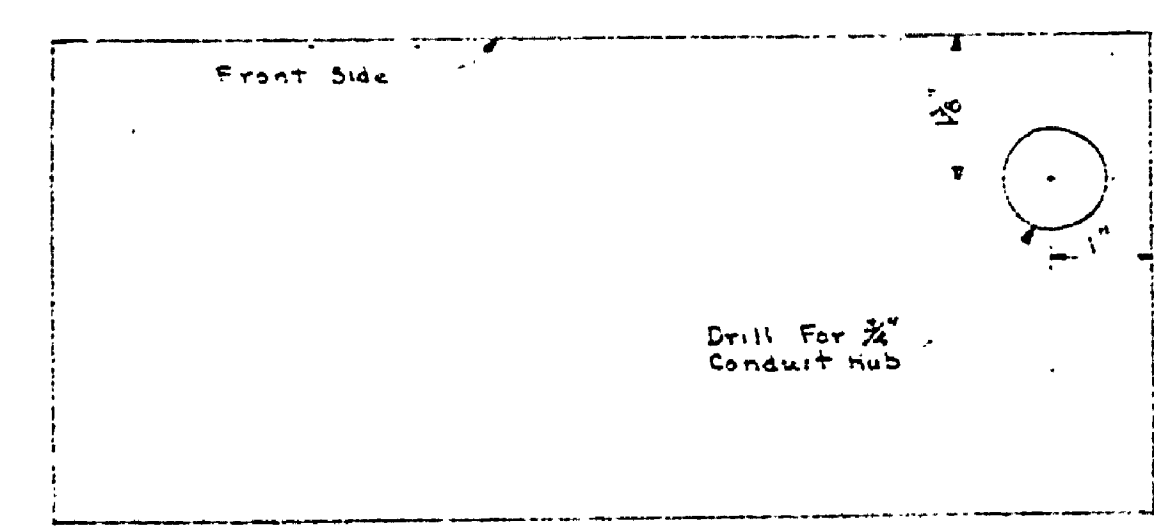
DATE	BY
13 JULY 1960	E. H. G.
	TRACED BY
	CHECKED BY E. J. P.



TOP

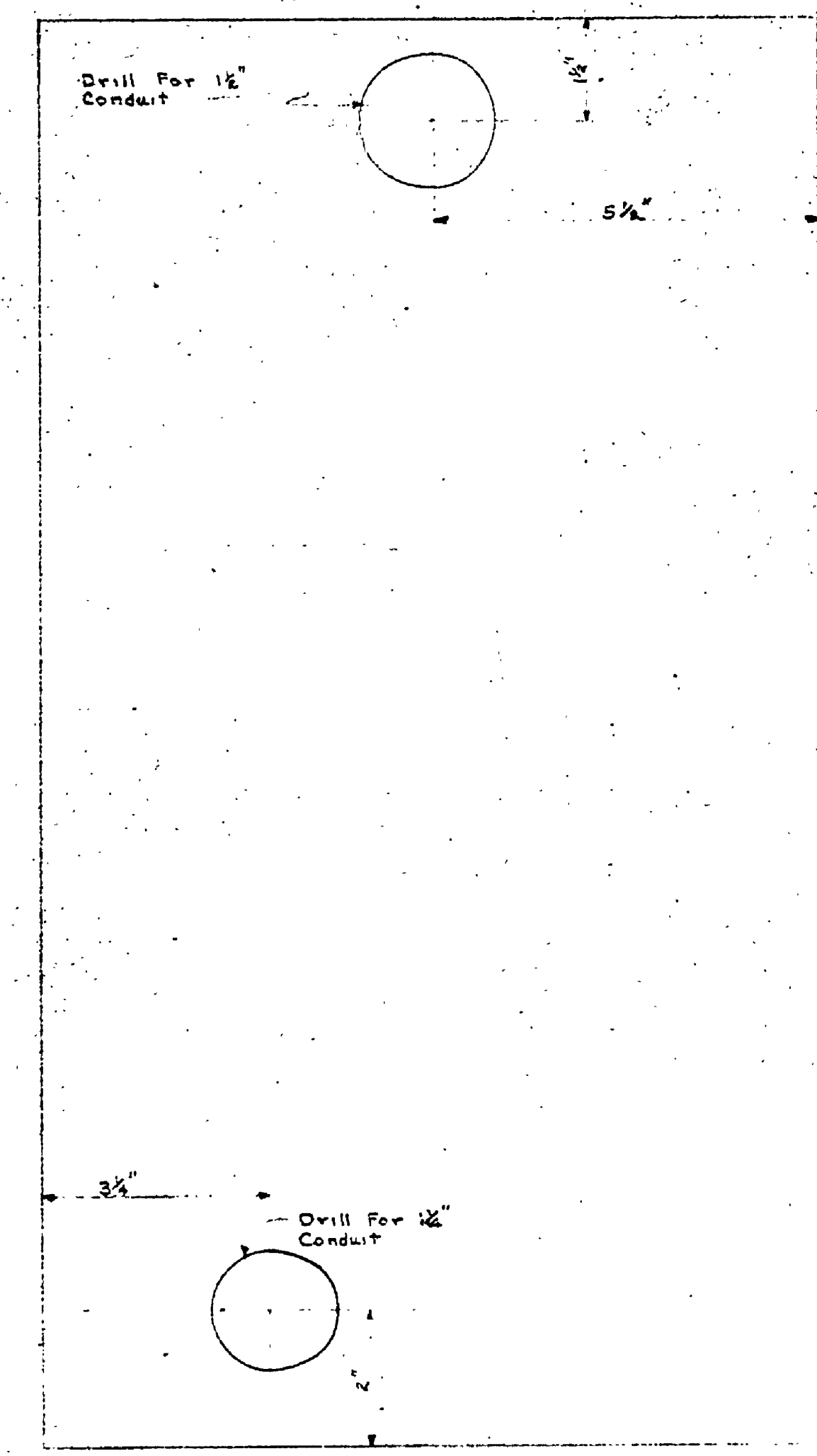


FRONT



BOTTOM

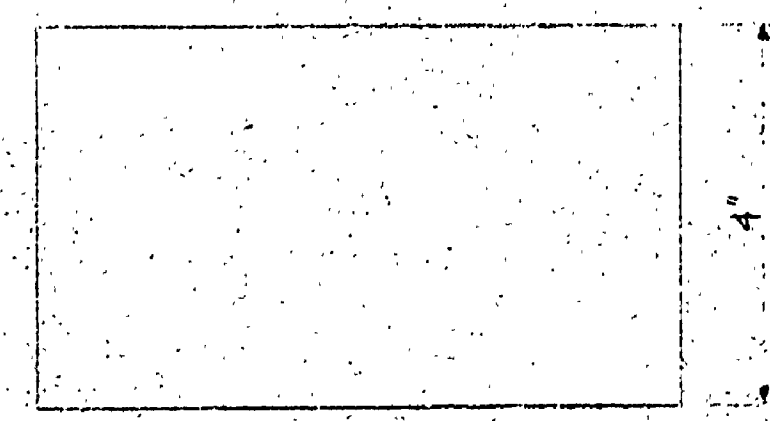
CONTROL FOR DUAL PUMPS
Half Scale



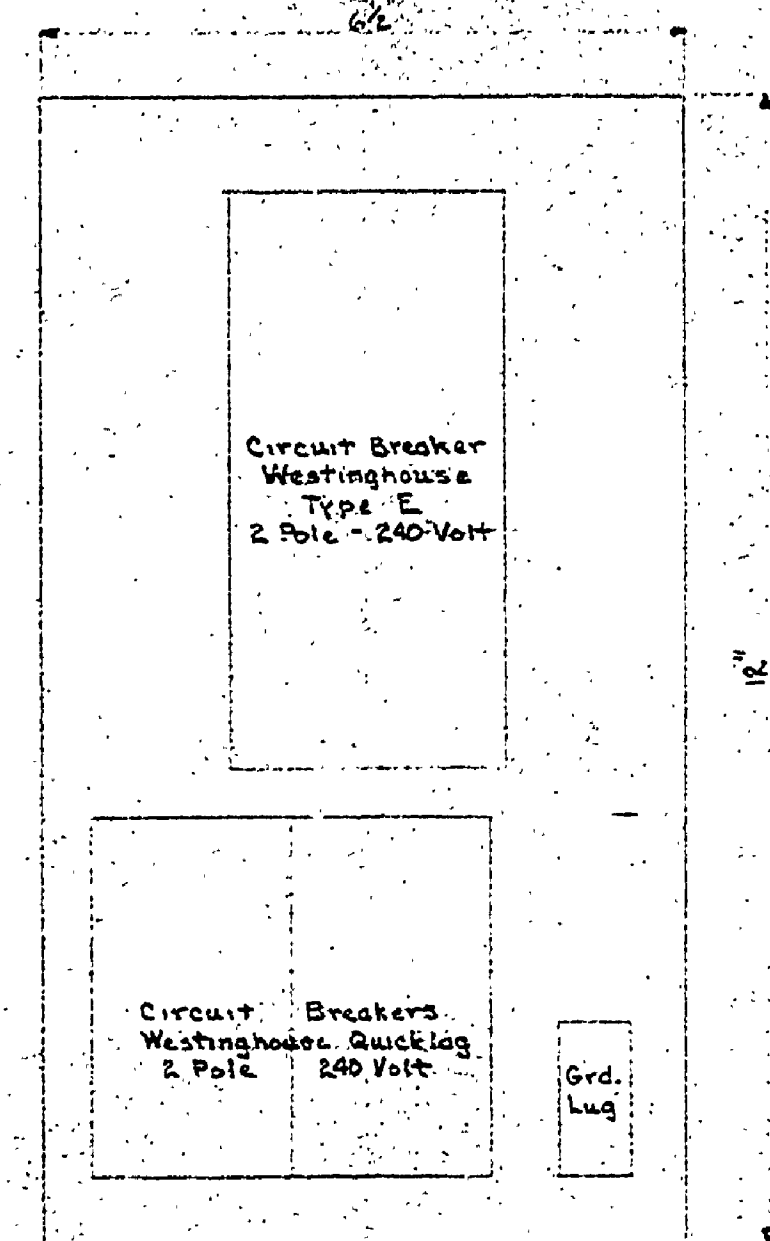
BACK

NOTES:
Cabinet is shown here with cover removed. Pumps will have 3 H.P. Motors - 220V.

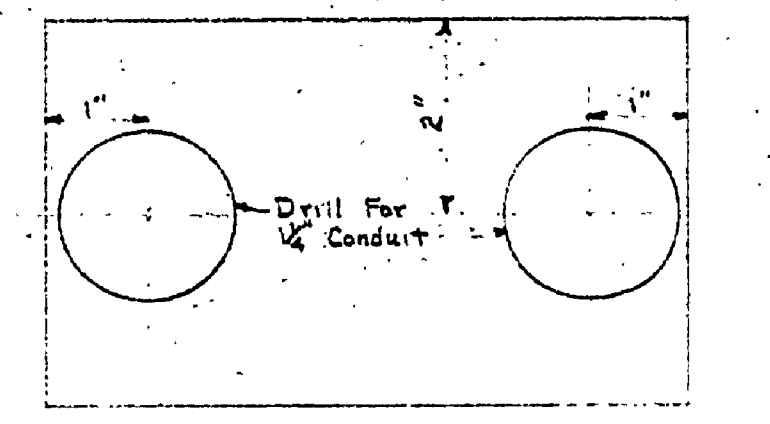
NOTE:
3 ϕ power was installed instead of 1 ϕ as shown. The std. 3 ϕ control cabinet was used but the disconnect switch was installed as shown on this sheet.



TOP



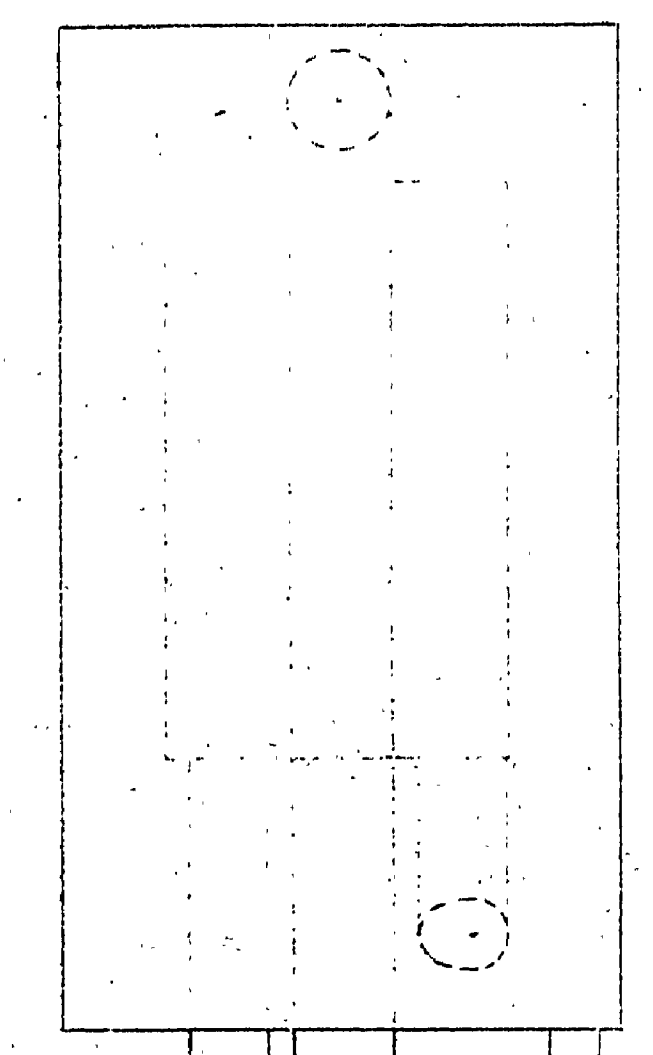
FRONT



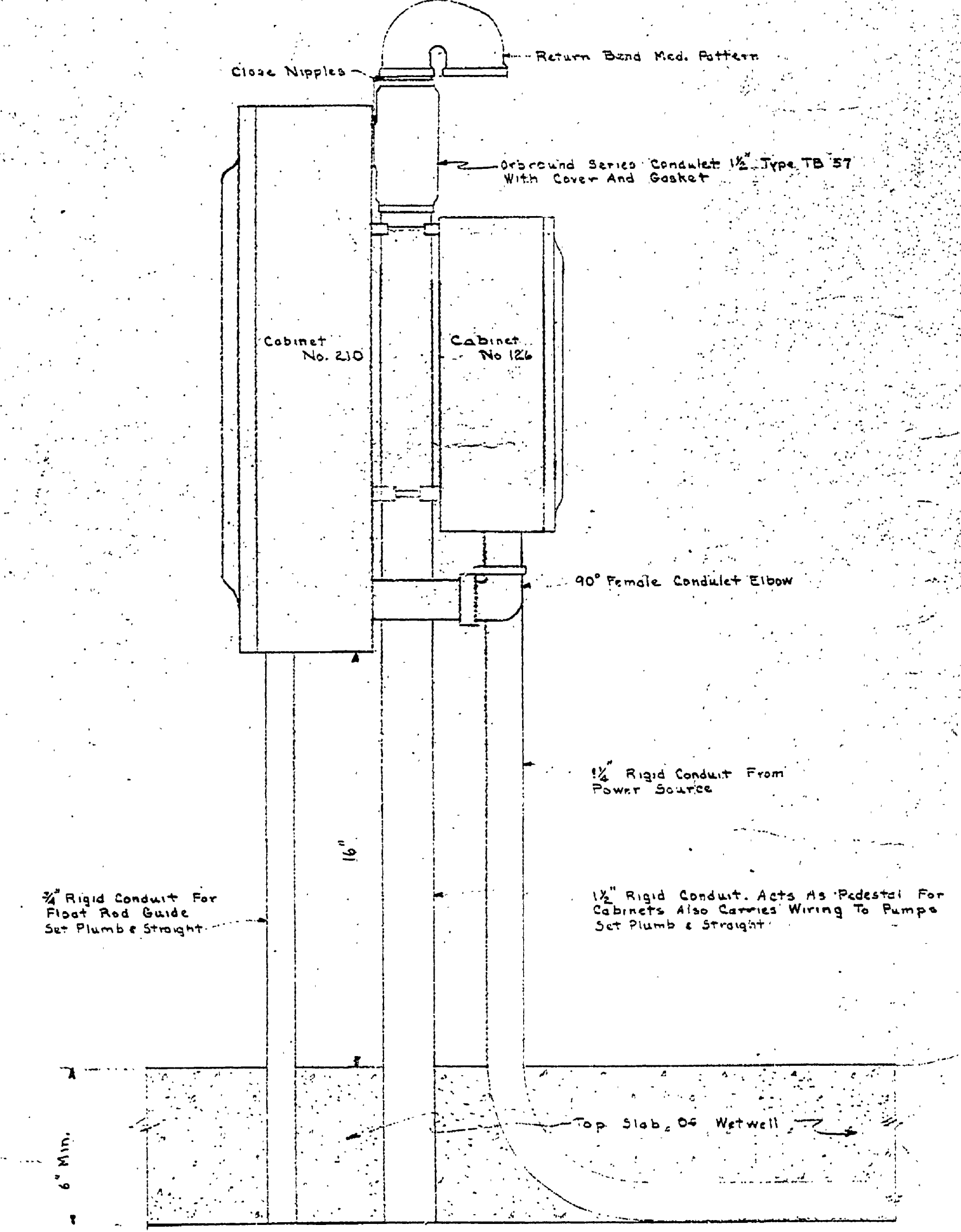
BOTTOM

MAIN DISCONNECT
Half Scale

NOTES:
Do Not Pour Top Slab of Wet Well Until After Switch & Pump Control Pedestal is Assembled and Set in Position in Form for Top Slab. The 1 1/2" Pedestal & 3/4" Float Rod Guide May Extend Beyond Bottom of Top Slab.



FRONT ELEVATION



SIDE ELEVATION

SWITCH AND PUMP CONTROL PEDESTAL
Scale 3" = 1'-0"