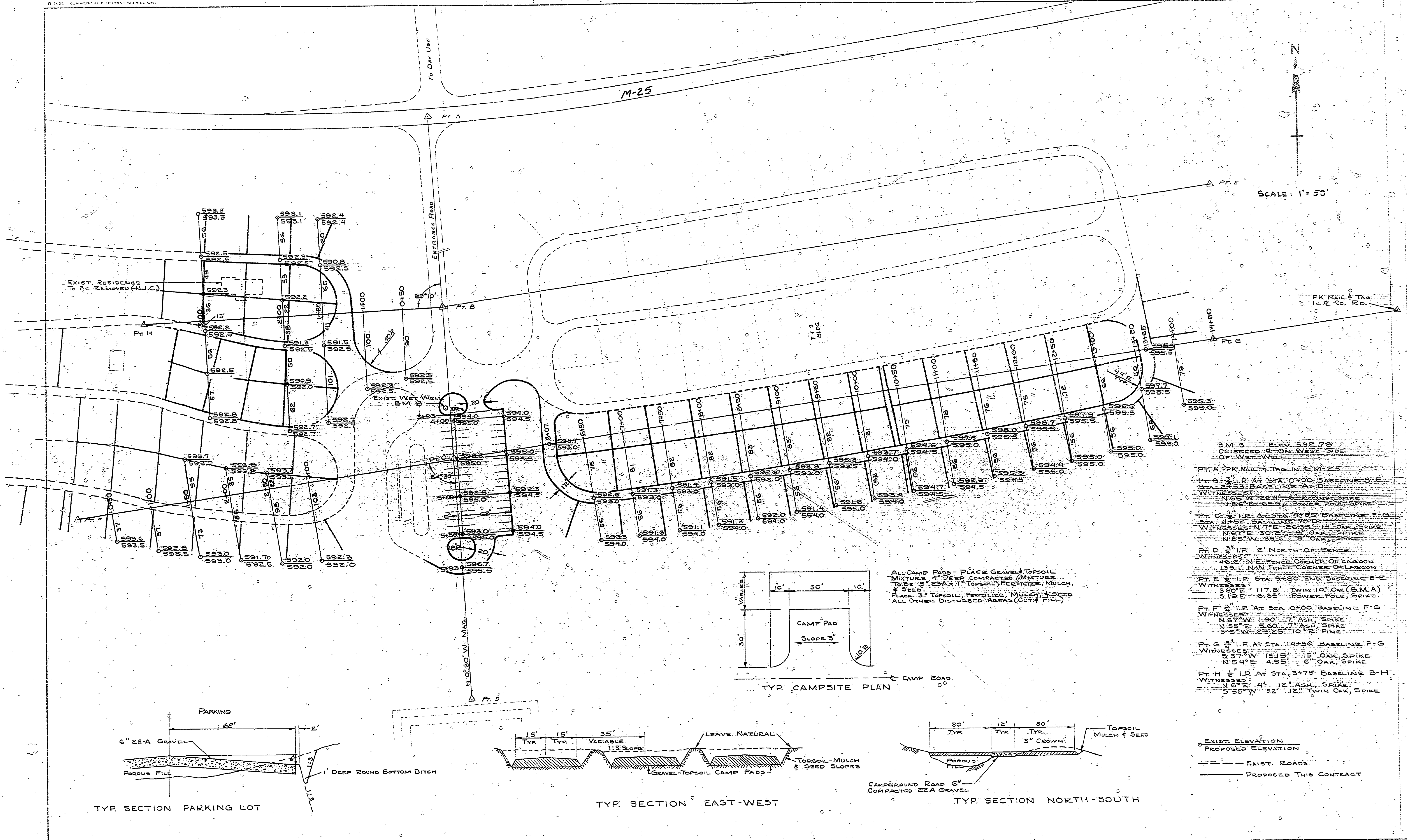
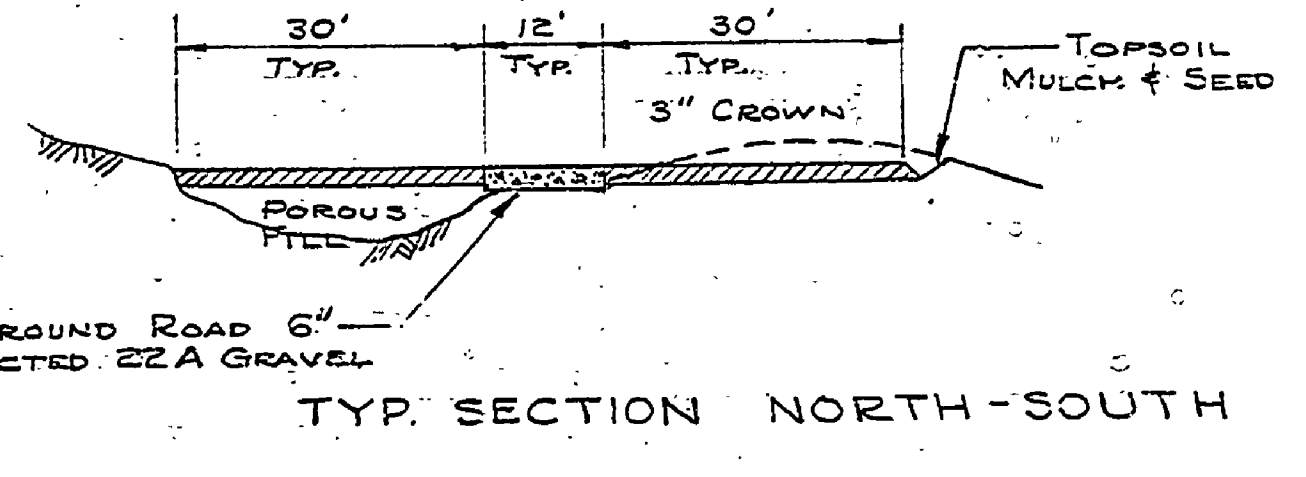
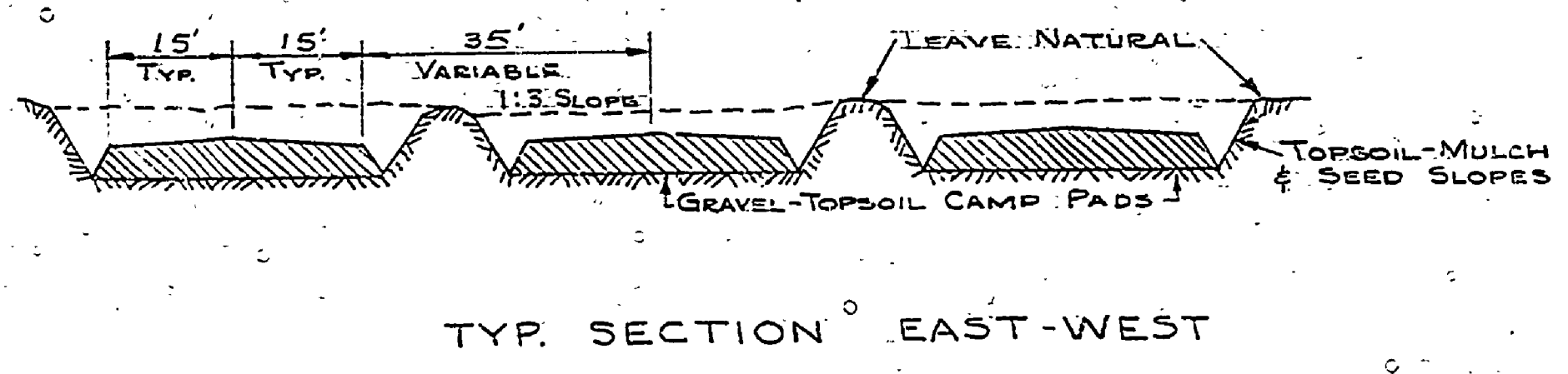
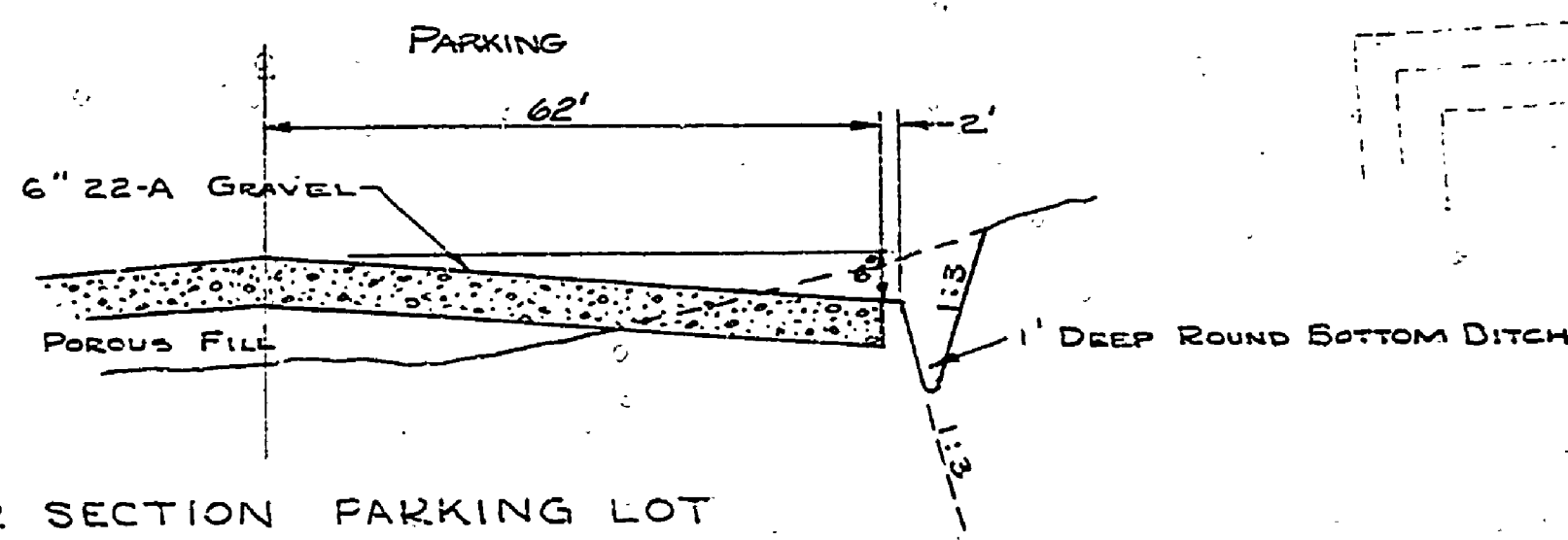
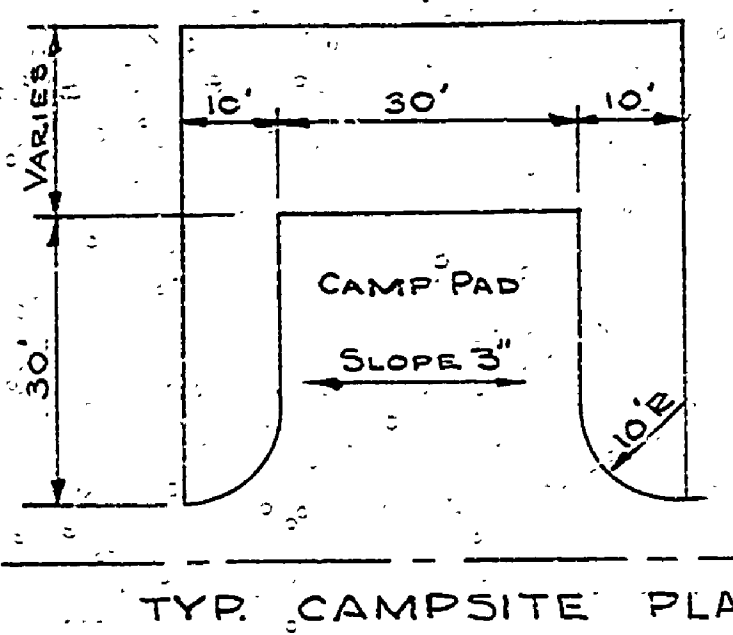


SCALE: 1" = 50'



- B.M. 5 ELKV. 592.78
CHISELED 2" ON WEST SIDE
OF WET WELL
- PT. A 2" I.P. TAG IN M-25
- PT. B 3" I.P. AT STA. 0+00 BASELINE B-E
STA. 2+53 BASELINE A-D
WITNESSES:
N 66° W 20' 12" OAK SPIKE
N 80° E 65' POWER POLE SPIKE
- PT. C 2" I.P. AT STA. 4+85 BASELINE F-G
STA. 4+57 BASELINE A-D
WITNESSES: N 70° E 26' 35" 1 1/4" OAK SPIKE
N 67° E 30' 2" 1 1/2" OAK SPIKE
N 85° W 39' 6" 8" OAK SPIKE
- PT. D 2" I.P. 2' NORTH OF FENCE
WITNESSES:
46' 2" N.E. FENCE CORNER OF LAGOON
139.1' N.W. FENCE CORNER OF LAGOON
- PT. E 3" I.P. AT STA. 9+80 END BASELINE B-E
WITNESSES:
S 80° E 117.8' TWIN 10" OAK (B.M.A.)
S 19° E 6.65' POWER POLE SPIKE
- PT. F 2" I.P. AT STA. 0+00 BASELINE F-G
WITNESSES:
N 67° W 1' 90" 7" ASH SPIKE
N 55° E 5' 60" 7" ASH SPIKE
S 5° W 23' 25" 10" PINE
- PT. G 2" I.P. AT STA. 14+50 BASELINE F-G
WITNESSES:
S 37° W 15' 15" 1 1/2" OAK SPIKE
N 54° E 4' 55" 6" OAK SPIKE
- PT. H 1" I.P. AT STA. 3+75 BASELINE B-H
WITNESSES:
N 6° E 4' 12" ASH SPIKE
S 55° W 52' 12" TWIN OAK SPIKE

ALL CAMP PADS - PLACE GRAVEL TOPSOIL
MIXTURE 4" DEEP COMPACTED MIXTURE
TOPSOIL 2 1/2" 23A 1" TOPSOIL FERTILIZER, MULCH,
& SEED.
PLACE 3" TOPSOIL, FERTILIZER, MULCH & SEED
ALL OTHER DISTURBED AREAS (CUT & FILL)



○ EXIST. ELEVATION
○ PROPOSED ELEVATION
--- EXIST. ROADS
--- PROPOSED THIS CONTRACT

| | | | | | | | | | | | | | | | | | | | | | | | |
|--------------------------|--|---------------------|--|------------|--|-------------|--|-----------|--|-------------|--|-----------|--|--|--|-------------------------|--|---------------------------------|--|------------------|--|----------------|--|
| SURVEYED BY | | DRAWN BY J.Y.P.M.A. | | Feb. 70 | | NO. DATE BY | | REVISIONS | | NO. DATE BY | | REVISIONS | | MICHIGAN DEPARTMENT OF NATURAL RESOURCES | | CAMPGROUND GRADING PLAN | | AREA OR PARK SLEEPER STATE PARK | | PROJECT NO. 1059 | | | |
| DESIGNED BY R.H. MERRILL | | Feb. 70 | | CHECKED BY | | DATE | | | | | | | | | | SHEET TITLE | | PROJECT CAMPGROUND DEVELOPMENT | | SHEET 2 OF 5 | | PLAN NO. E-120 | |