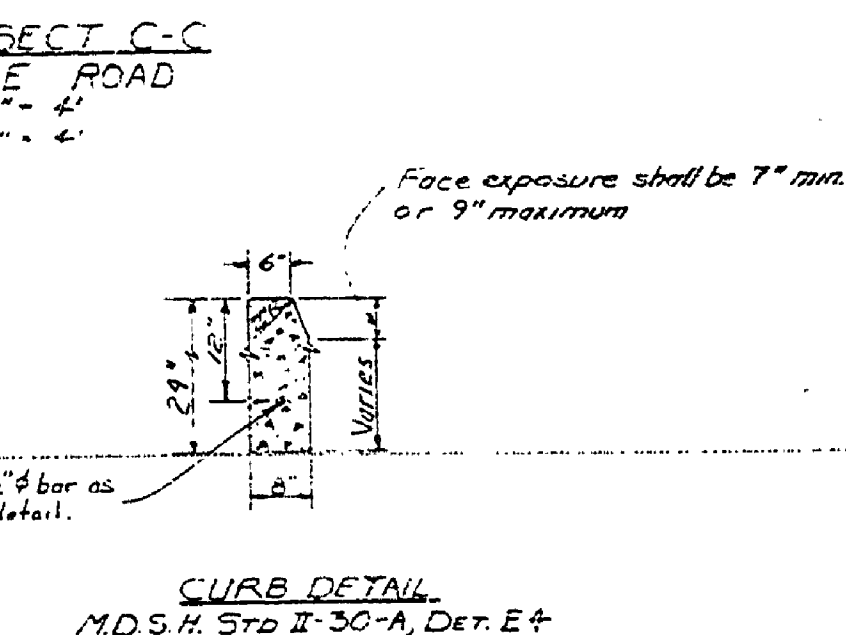
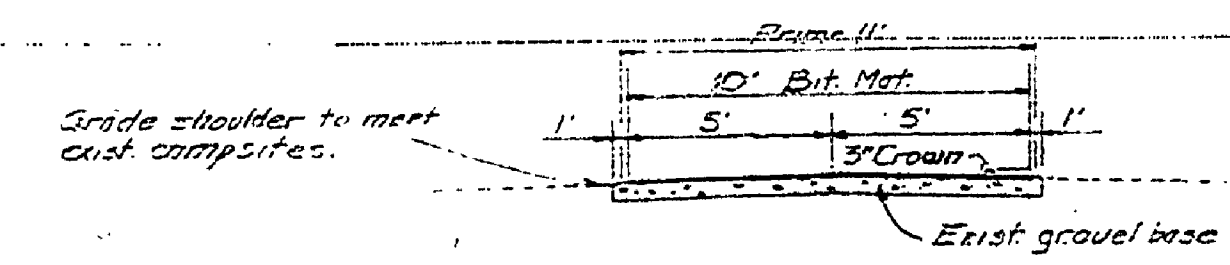
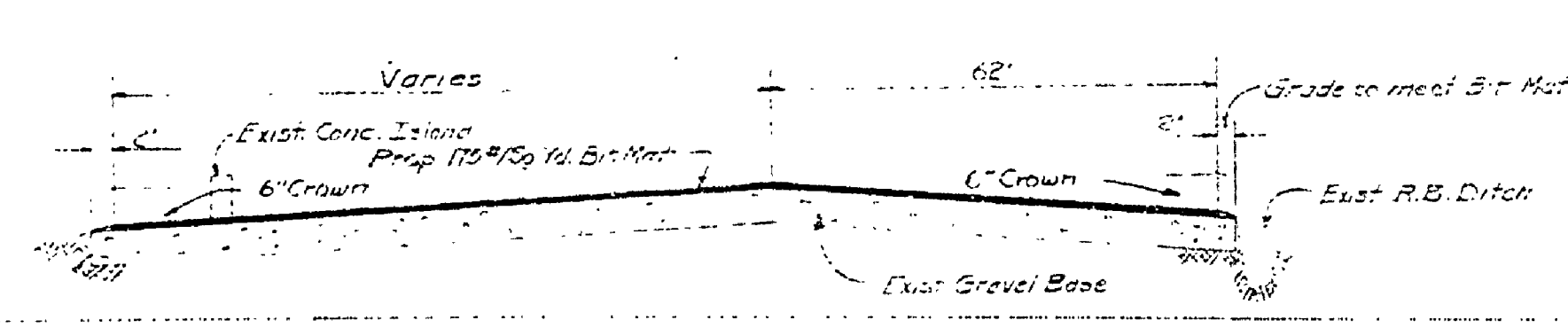
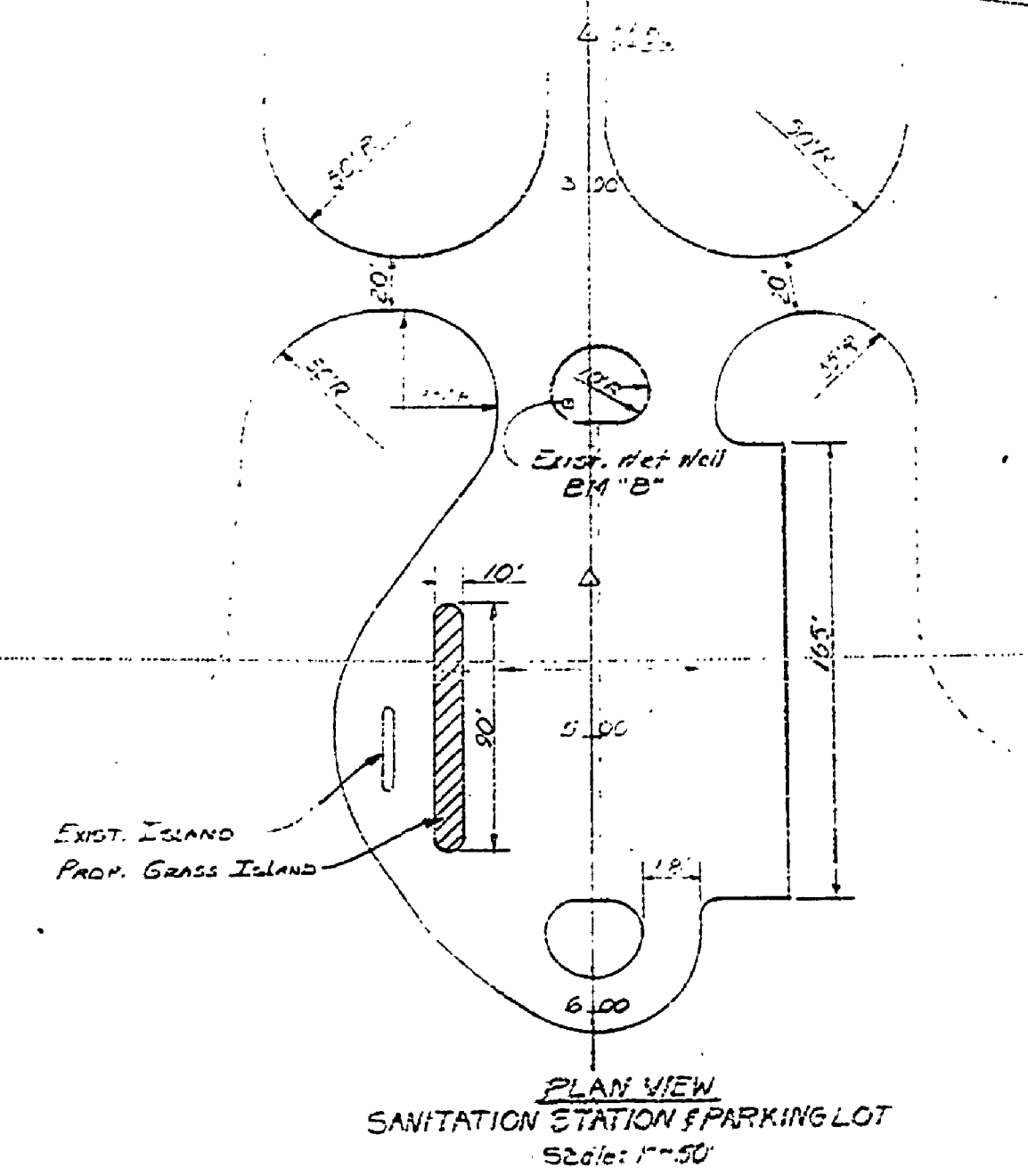
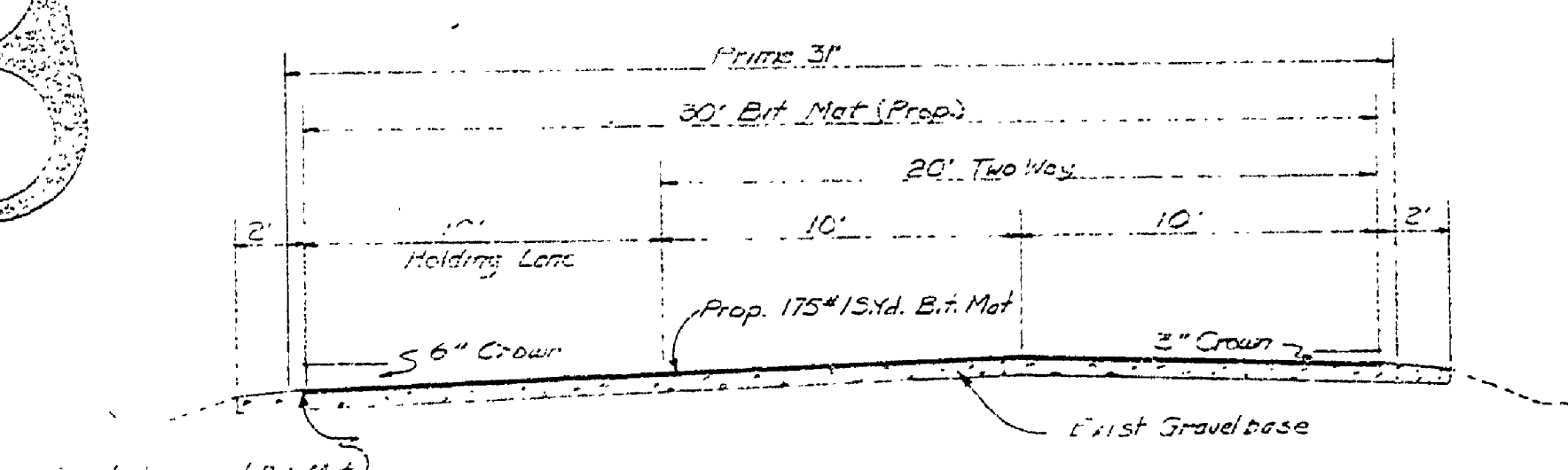
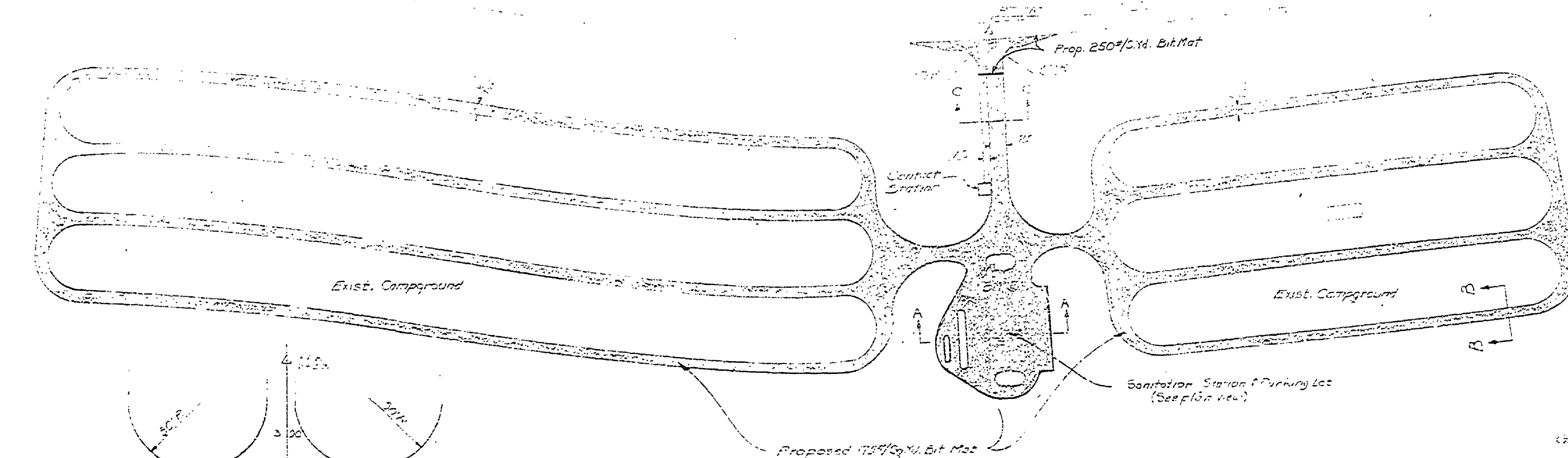
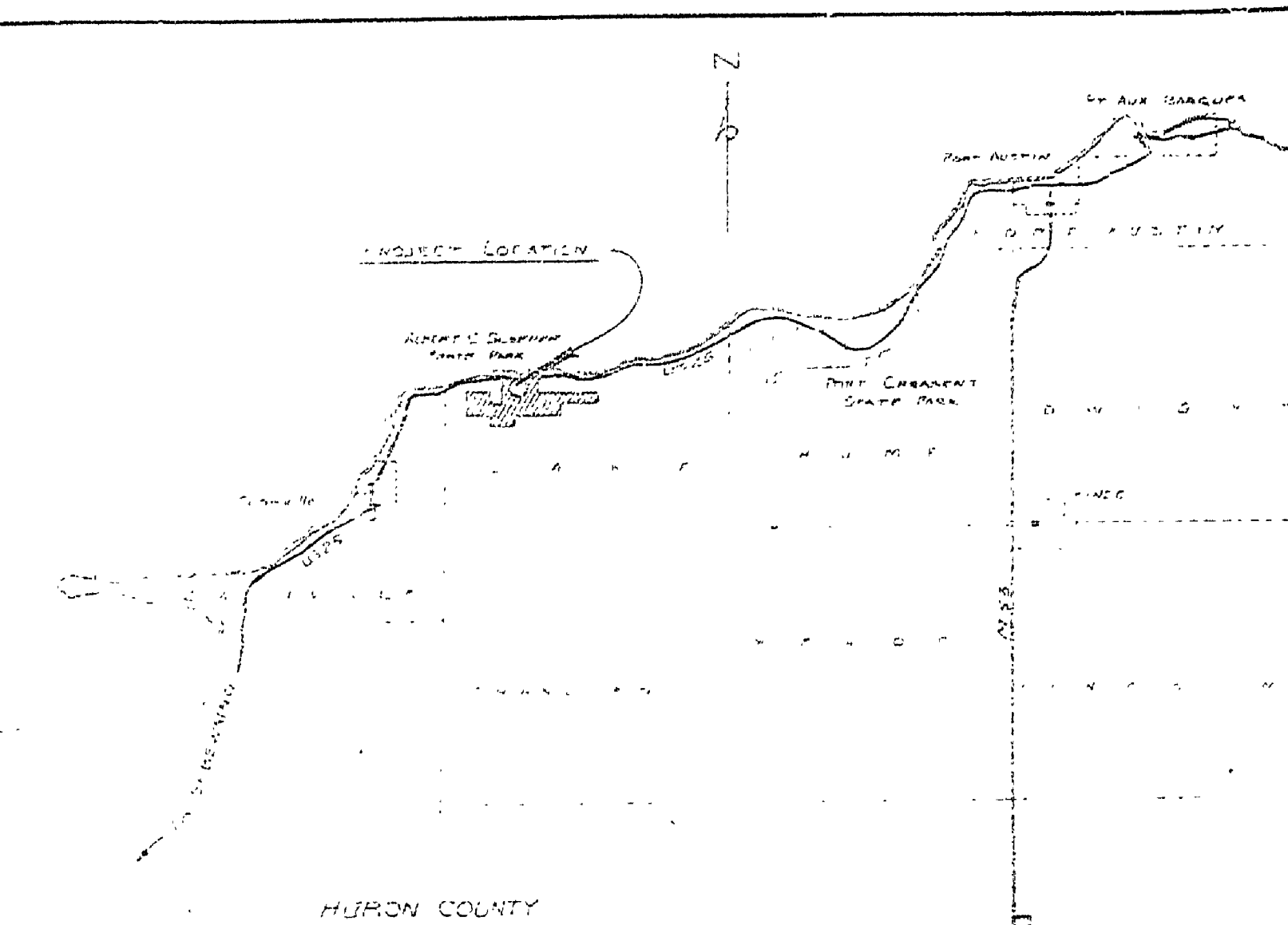
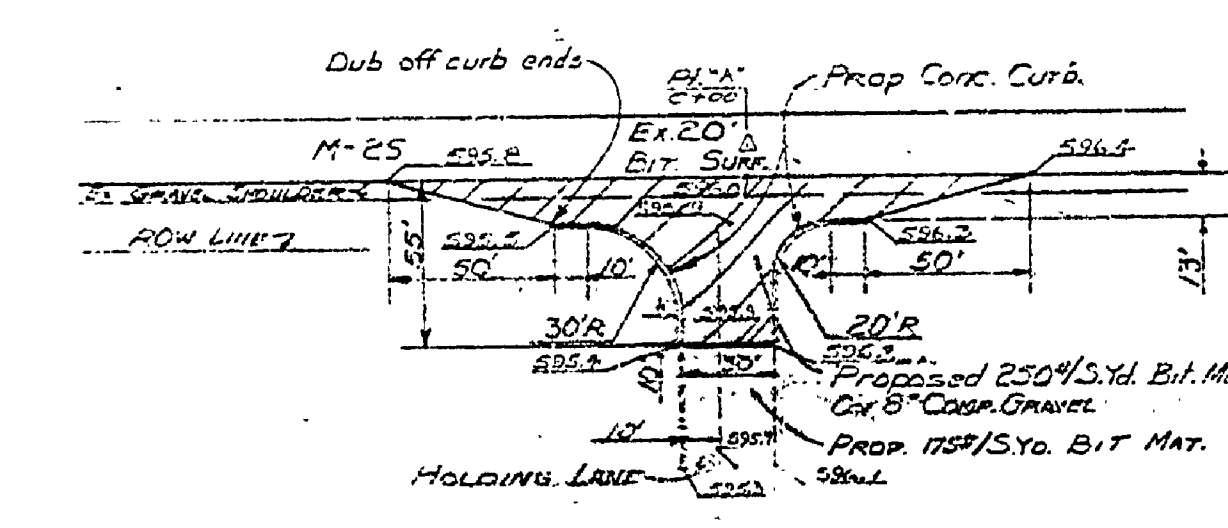


ALBERT E. SLEEPER S.P.
BITUMINOUS SURFACING
PROJECT NO. 24-1408

INSTRUCTIONS:
1. All work to be done in accordance with the specifications of the Michigan Department of Natural Resources.
2. The contractor shall be responsible for obtaining all necessary permits and licenses.
3. The contractor shall be responsible for the safety of all workers and the public.
4. The contractor shall be responsible for the quality of all work.
5. The contractor shall be responsible for the completion of all work by the specified date.



B.M. 'B' ELEV. 592.78
CHISELED ON WEST SIDE OF WET
WELL
POINT 'A', P.K. NAIL STAG IN E OF M-25



QUANTITIES
Condition Aggregate Surface 17,000 cu yd
22-A Condition Aggregate 1,800 Tons
Bituminous Prime Coat, M-20, M-25 or M-30 5,100 Gal.
Bituminous Surface, 175' x 15', M.D.S.H. 15,000 Sq. Yd.
Bituminous Surface, 250' x 15', M.D.S.H. 580 Sq. Yd.
Concrete Curb, Entrances 130 L.F.
6\"/>

NOTE: Although the quantities are carefully estimated, they are not intended to be used as a basis for determining payment for this project.

| | |
|---------------------------------|-------------|
| BUILDING COMMITTEE APPROVAL | |
| BY: _____ | DATE: _____ |
| RECOMMENDED FOR APPROVAL: _____ | |
| RECOMMENDED FOR APPROVAL: _____ | |
| DIVISION/REGION APPROVAL | |
| BY: _____ | DATE: _____ |
| APPROVED: _____ | |

| | | | | | | | | | | | | | | | |
|----------------------------------|-------|-------------------------|------|-------|------|----|-----------|-------|------|----|-----------|--|-------------|---|-----------------------------|
| SURVEYED BY: <i>Lee W. Smith</i> | 12-76 | DRAWN BY: <i>L.M.S.</i> | 3-73 | NO. 1 | DATE | BY | REVISIONS | NO. 2 | DATE | BY | REVISIONS | MICHIGAN DEPARTMENT OF NATURAL RESOURCES | PLAN DETAIL | ENTRANCE ROAD & CAMPGROUND ROADS AREA OR PARK | PROJECT NO. 24-1408 |
| DESIGNED BY: <i>L.M.S.</i> | 1-73 | CHECKED BY: | | 1. | | | | 3. | | | | | SHEET TITLE | PROJECT BITUMINOUS SURFACING | SHEET 1 OF 1 PLAN NO. E 121 |