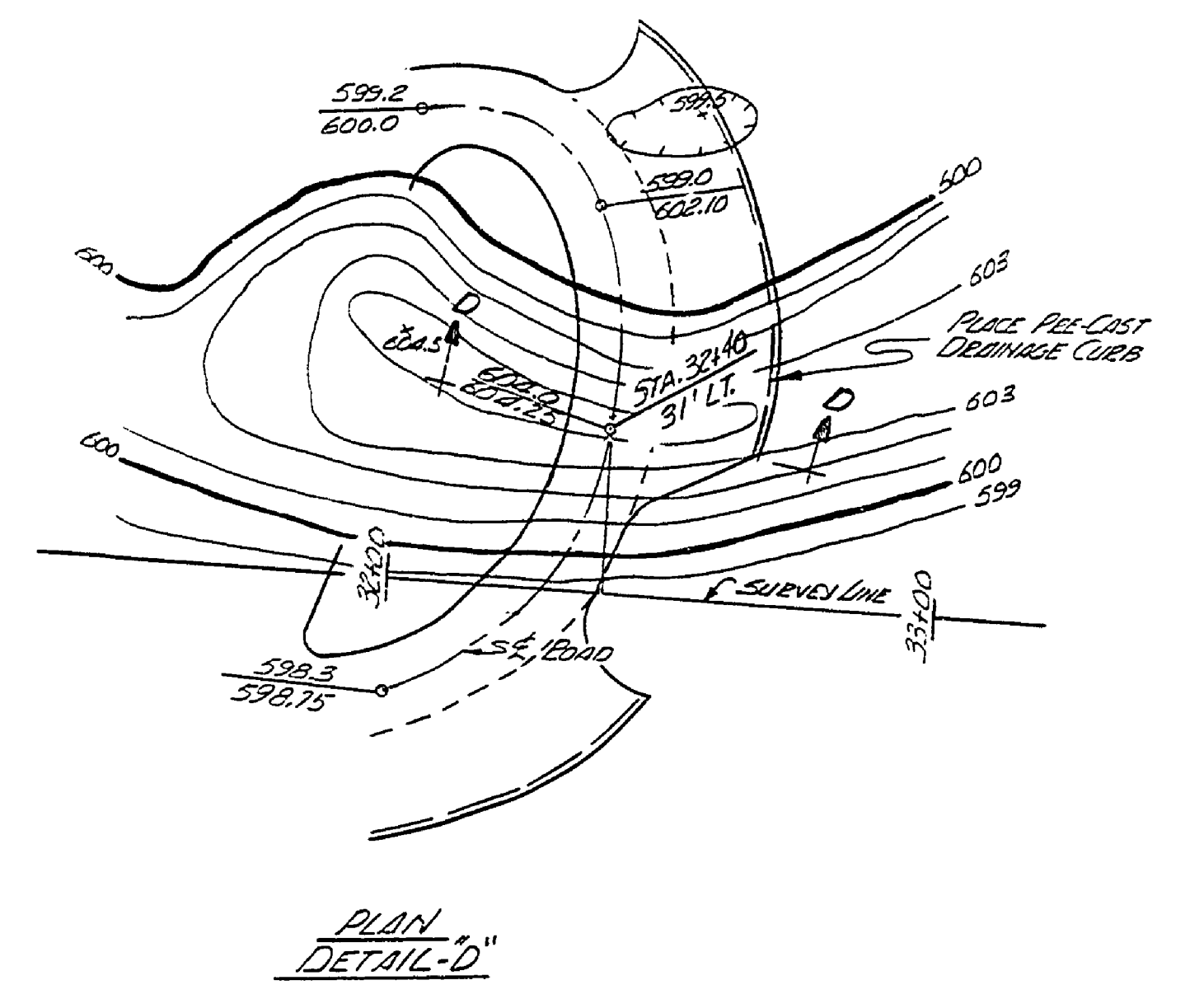
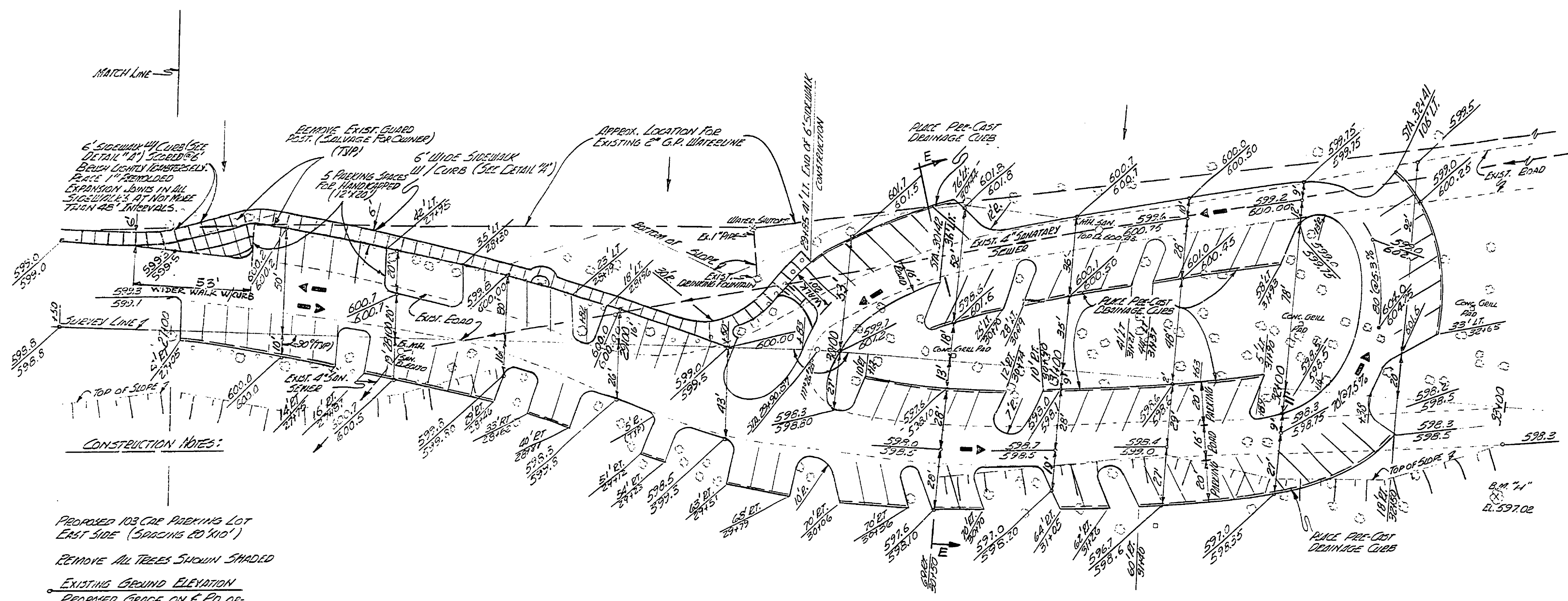
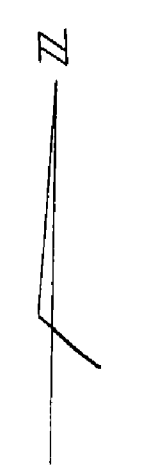


WITNESSES STA. 29190.87 (#4" PAV)  
 N 03° E, 6.33', 12" OAK  
 S 42° E, 21.09', 14" OAK ON EDGE  
 OF DRIVE.

WITNESSES STA. 32199.25 (34" PAV)  
 N 03° E, 17.24', 11" OAK  
 S 54° W, 51.77', 15" OAK ON EDGE  
 OF DRIVE.

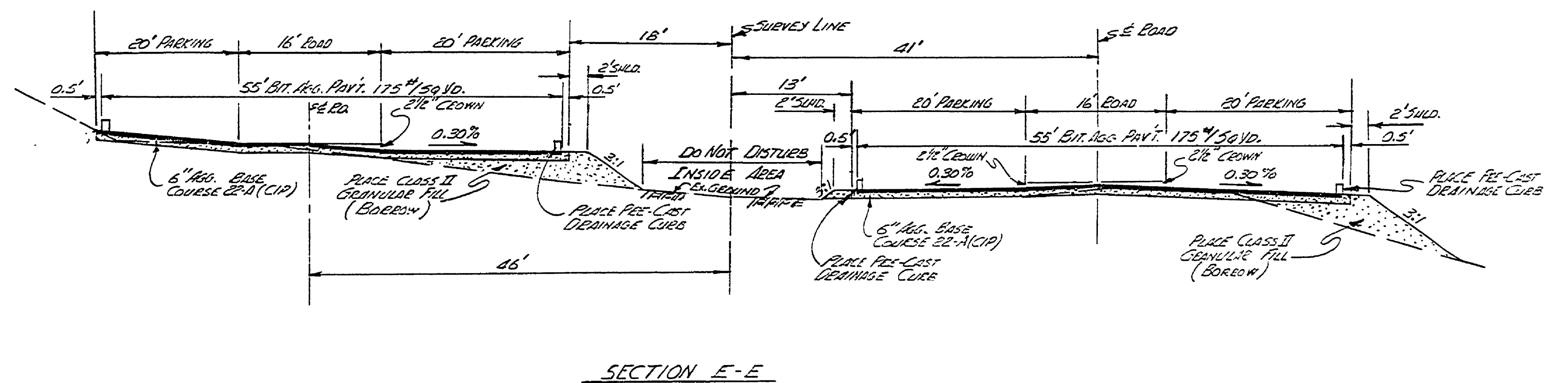
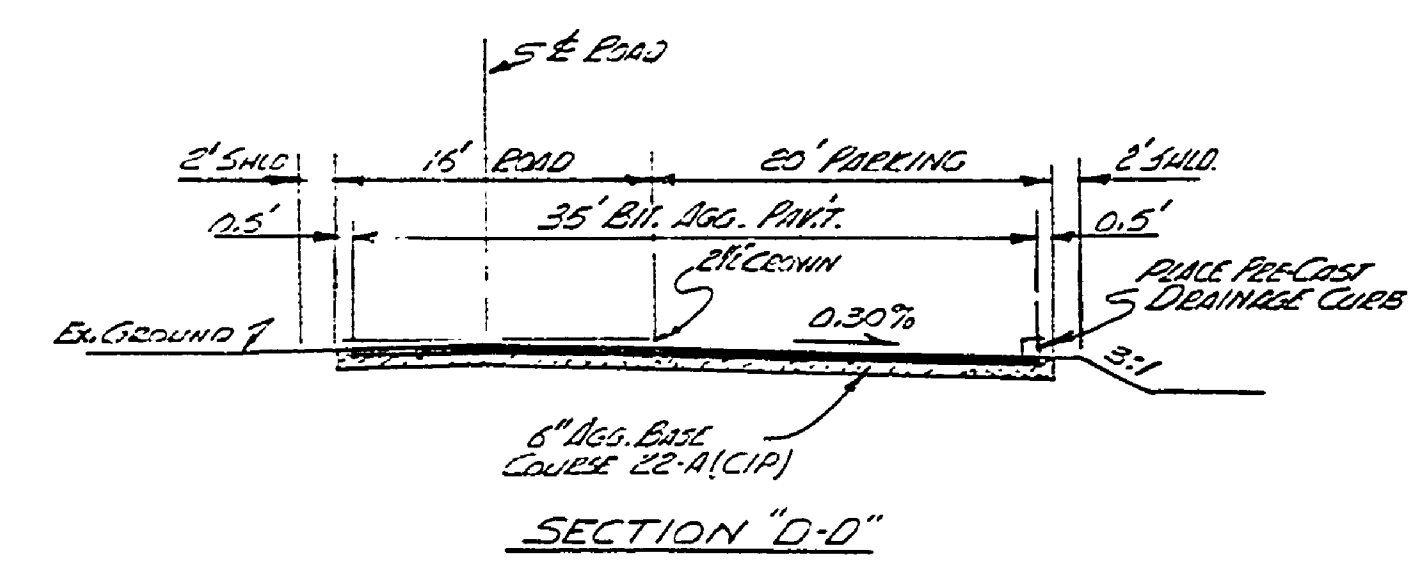
B.M. "11" ELEV. 597.02  
 P.K. #1 IN WEST FOOT  
 OF 14" OAK 42' E. OF  
 STA. 33100.



**CONSTRUCTION NOTES:**

- PREPARED JOB CAR PARKING LOT EAST SIDE (SPACING 20' X 10')
- REMOVE ALL TREES SHOWN SHADED
- EXISTING GROUND ELEVATION
- PROPOSED GRADE ON E. ED. OF PARKING LOT (TOP OF SLEEPER CURB)
- PLACE 3" TOPSOIL, SEED FERTILIZE & MULCH ROAD SHOULDERS & SLOPES.
- CONTRACTOR SHALL TAKE NECESSARY PRECAUTIONS NOT TO DISTURB EXISTING WATERLINES AND SANITARY SEWERS AND WILL ASSUME LIABILITY FOR ANY DAMAGE TO THESE LINES INSTALLED BY OTHERS.

**PLAN**  
 SCALE: 1" = 30'



SURVEYED BY <i>E. ROON</i>	9-75	DRAWN BY <i>J. LEMMON</i>	4-76	NO.	DATE	BY	REVISIONS	NO.	DATE	BY	REVISIONS	MICHIGAN DEPARTMENT OF NATURAL RESOURCES	LAYOUT & GRADING PLAN EAST SIDE SHEET TITLE	SLEEPER STATE PARK AREA OR PARK ENTRANCE ROAD, PARKING LOTS, AND UTILITIES	PROJECT NO. 24-1667	SHEET 3 OF 3	PLAN NO. E-124
DESIGNED BY <i>A. PETRAVICIUS</i>	12-75	CHECKED BY		1.				3.									
	DATE		DATE	2.				4.									