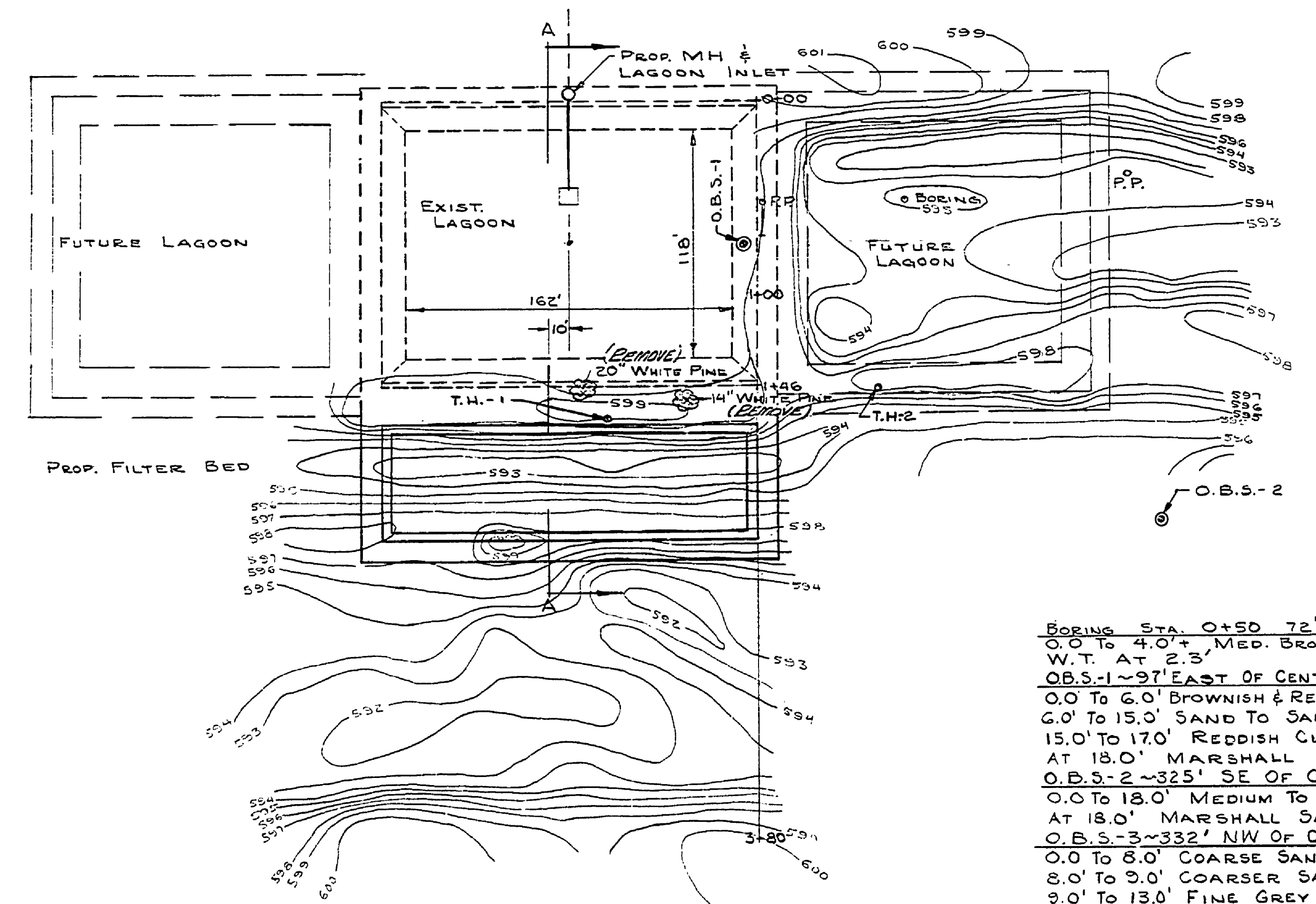
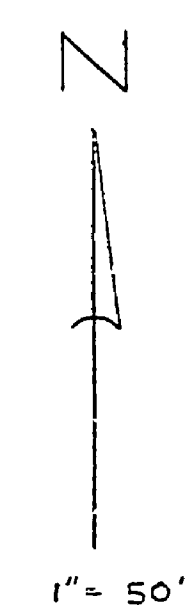


BM 'B' ELEV. 592.78
CHISELED \square ON W. SIDE
OF WET WELL.



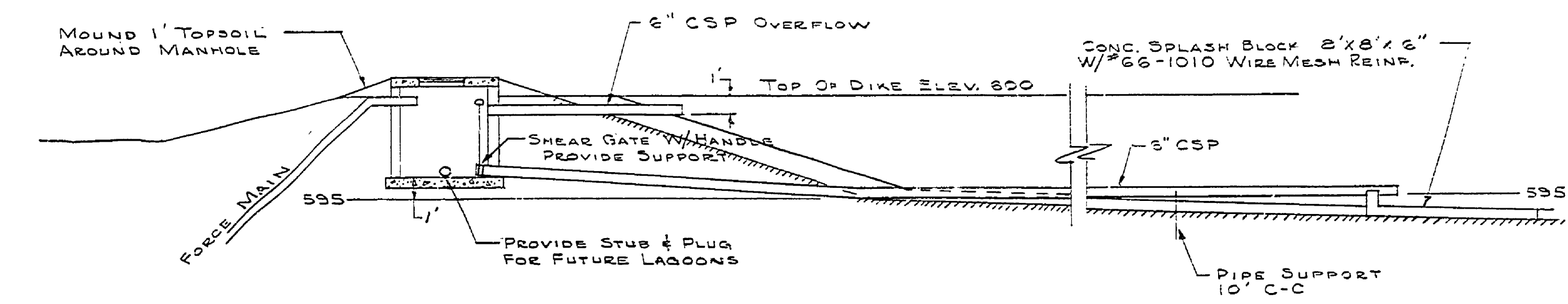
BORINGS

BORING STA. 0+50 72' LT.
0.0' TO 4.0' MED. BROWN SAND
W.T. AT 2.3'

O.B.S.-1 ~ 97' EAST OF CENTER OF SEWAGE LAAGOON
0.0' TO 6.0' BROWNISH & RED SAND-MED. FINE GRAIN
6.0' TO 15.0' SAND TO SAND & STONE
15.0' TO 17.0' REDDISH CLAY & SAND
AT 18.0' MARSHALL SANDSTONE

O.B.S.-2 ~ 325' SE OF CENTER OF SEWAGE LAAGOON
0.0' TO 18.0' MEDIUM TO FINE SAND
AT 18.0' MARSHALL SANDSTONE

O.B.S.-3 ~ 332' NW OF CENTER OF SEWAGE LAAGOON
0.0' TO 8.0' COARSE SAND
8.0' TO 9.0' COARSER SAND
9.0' TO 13.0' FINE GREY SAND & GRAVEL
AT 13.0' MARSHALL SANDSTONE



MANHOLE DETAIL

MANHOLE 1'
4' DIA. X 42' LONG
PRECAST CONG. PIPE
W/ #6' CONG. BASE &
6' CONG. TOP & MH COVER

NOTE:
NO CONSTRUCTION WORK ON THE
LAAGOON SYSTEM WILL BE PERMITTED
PRIOR TO SEPT. 15, 1977. EXISTING
SYSTEM TO REMAIN IN USE UNTIL THEN.

