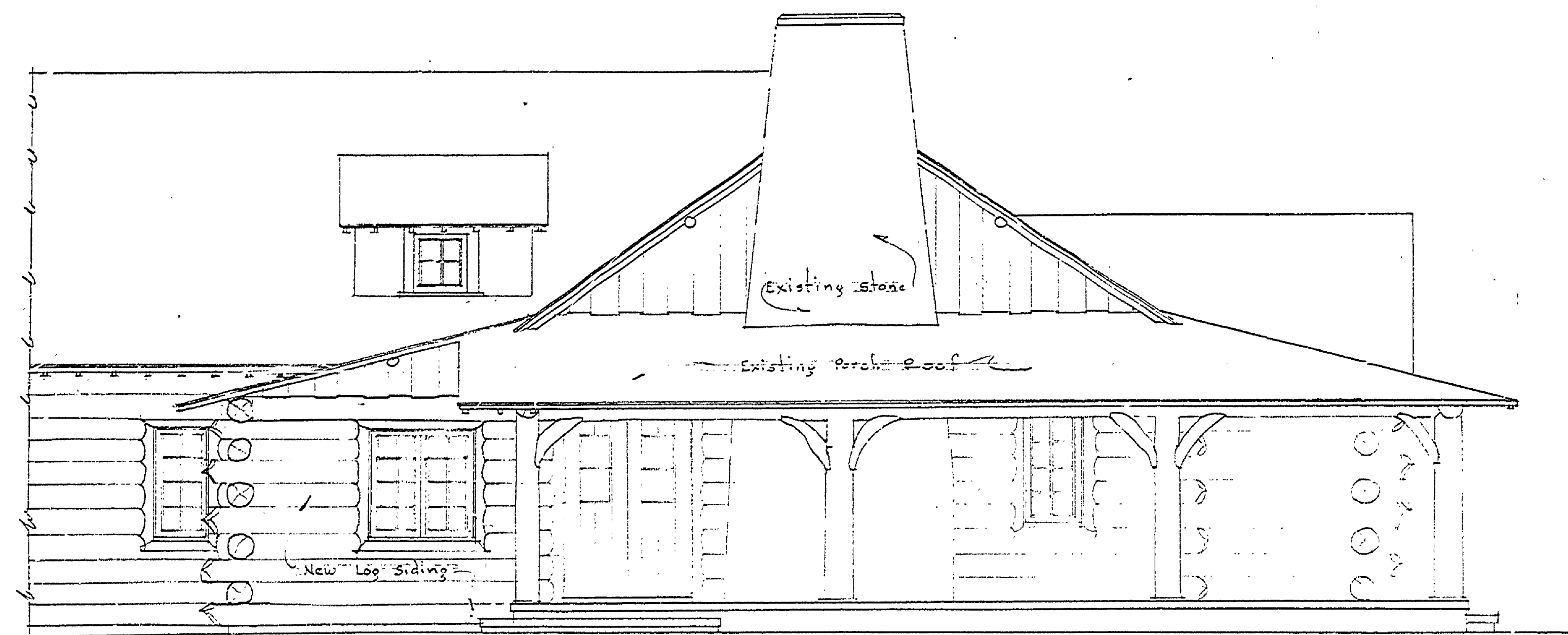
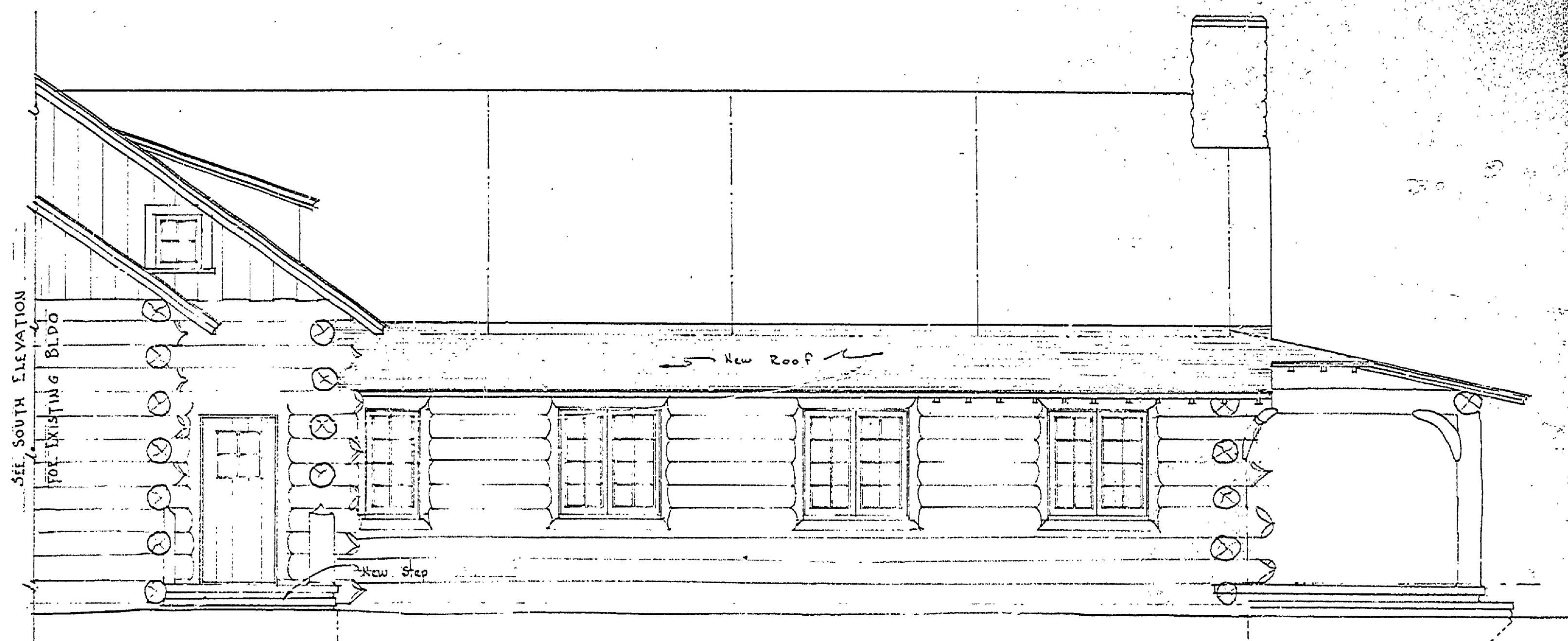


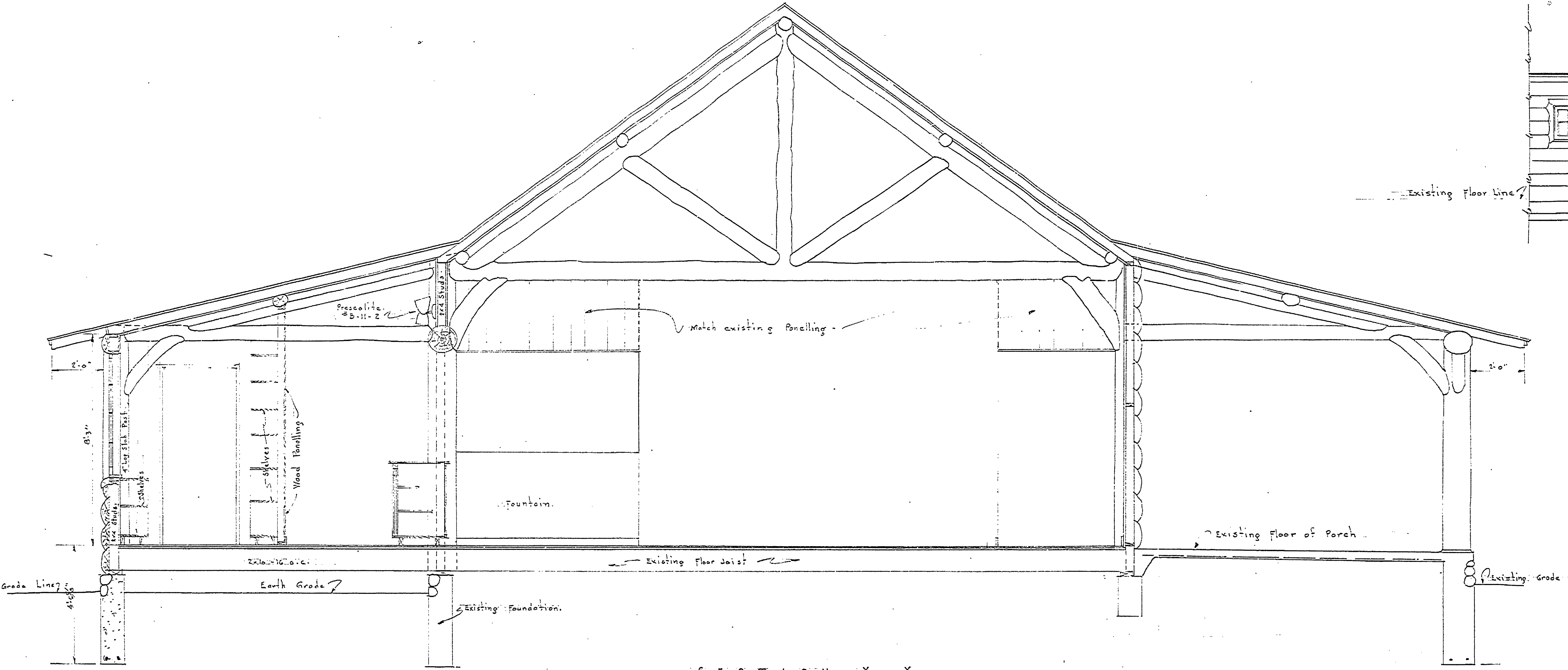
| DRAWN BY | | REVIEWED BY SECTIONS | | APPROVED BY | | NO. DATE BY | | REVISIONS | |
|------------|--|----------------------|--------|---------------------------|--|-------------|---------|-----------|-----------------|
| J.W. Fish | | J.R.P. | A.S.P. | A.S.P. | | 1 | 7/21/53 | W.A. | |
| TRACED BY | | ARCHITECTURAL | | ASSISTANT CHIEF IN CHARGE | | 2 | | | |
| CHECKED BY | | ENGINEERING | | OF DESIGN | | 3 | | | |
| DATE | | LANDSCAPE | | DATE | | | | 4 | BUILDING NUMBER |
| | | | | | | | | 5 | |
| | | | | | | | | 6 | |



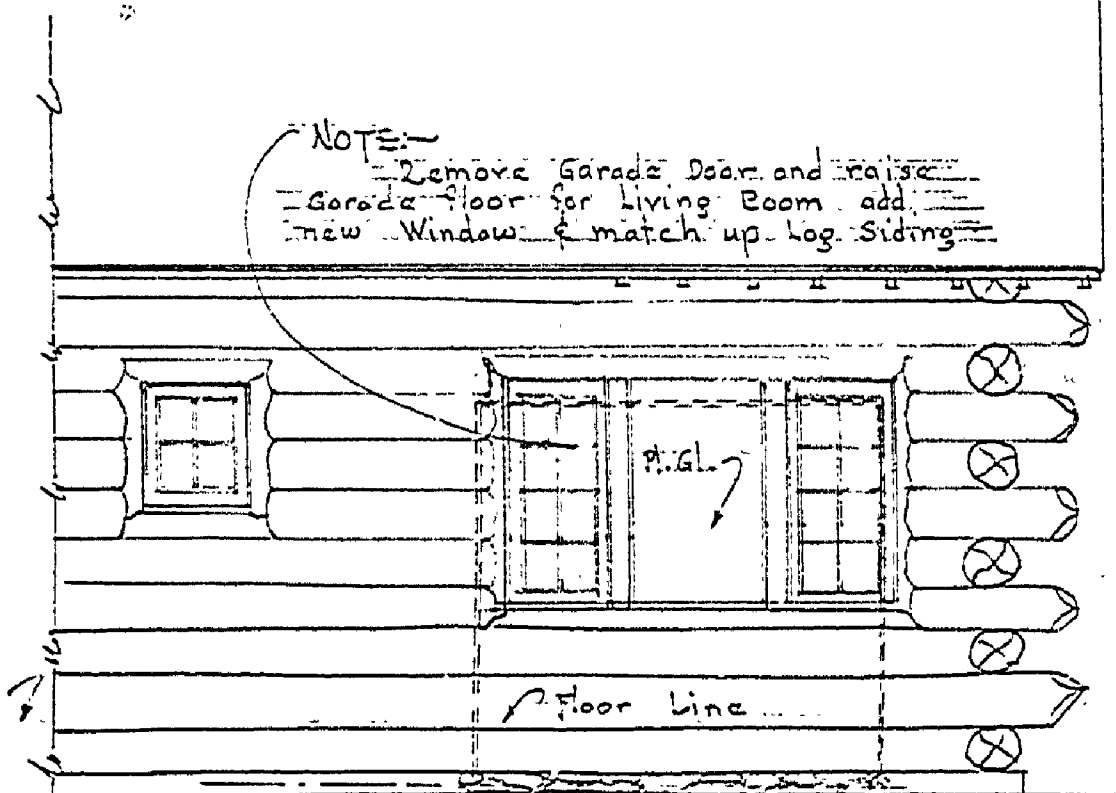
EAST ELEVATION
Scale: 1/4" = 1'-0"



PARCEL 2 SOUTH ELEVATION
Scale: 1/4" = 1'-0"



SECTION X-X
Scale: 1/4" = 1'-0"



NOTE: Match existing Foundation.
ELEVATION OF WINDOW
WEST ELEVATION
Scale: 1/4" = 1'-0"

MASTER PLAN BLDG #4

MICHIGAN
DEPARTMENT OF CONSERVATION
PARKS AND RECREATION DIVISION

HIGGINS LAKE STATE PARK
PAVILION
REMODELING CONCESSION

SHEET
NO. 7
OF

PLAN NO.
A.T.O. 10