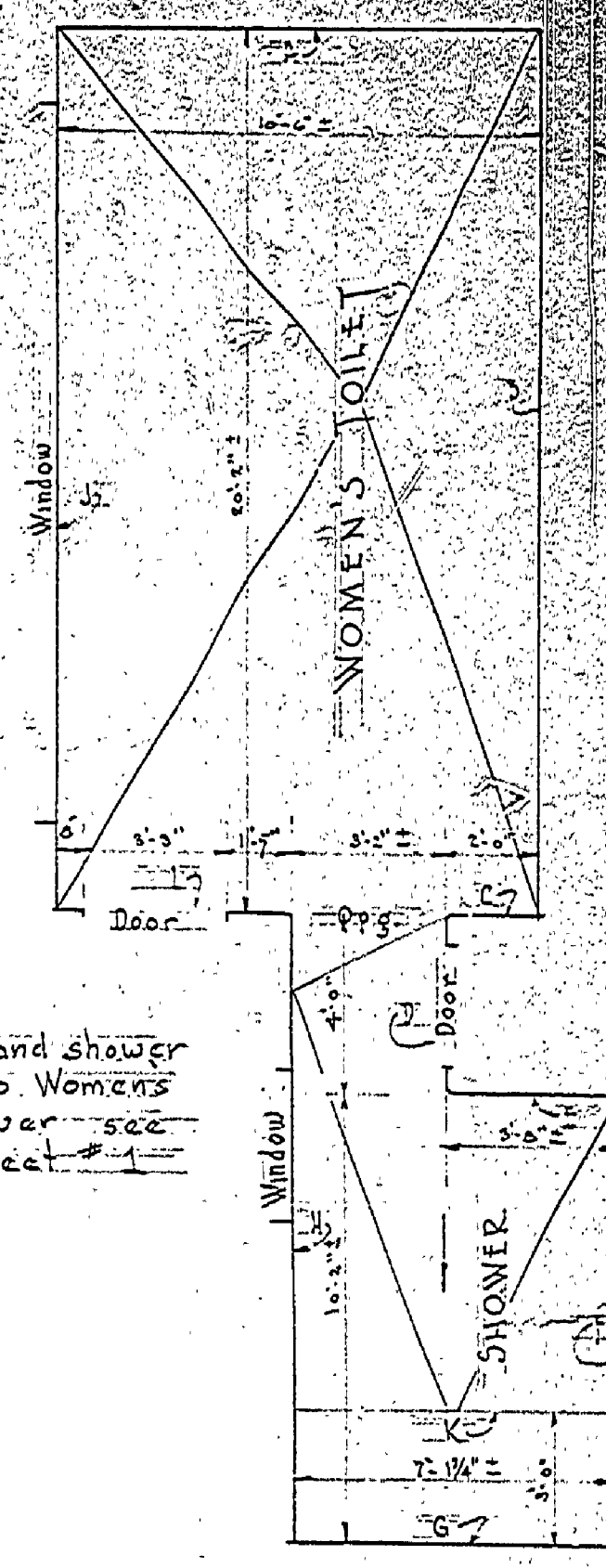
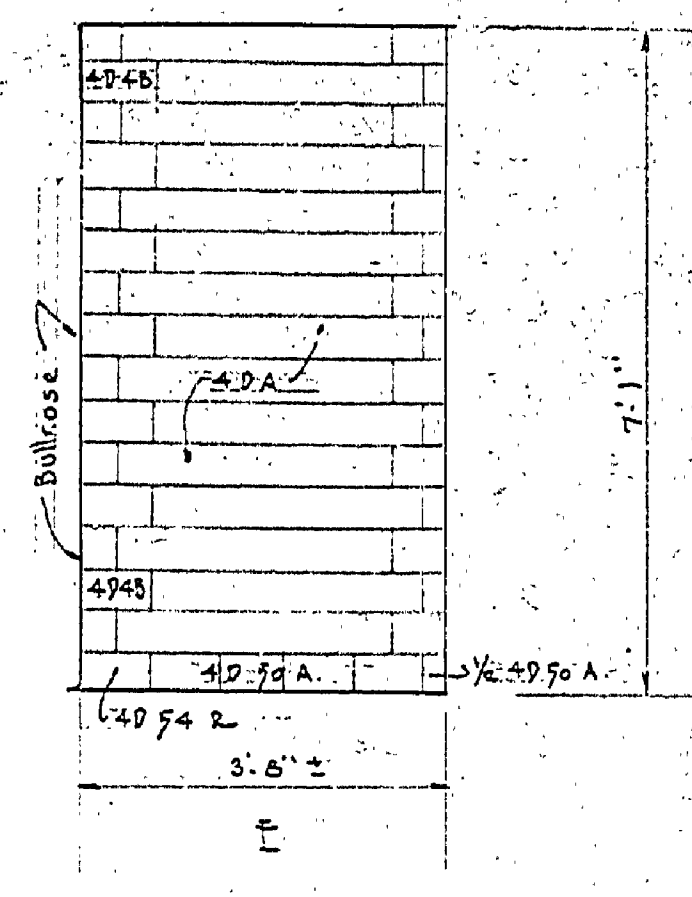
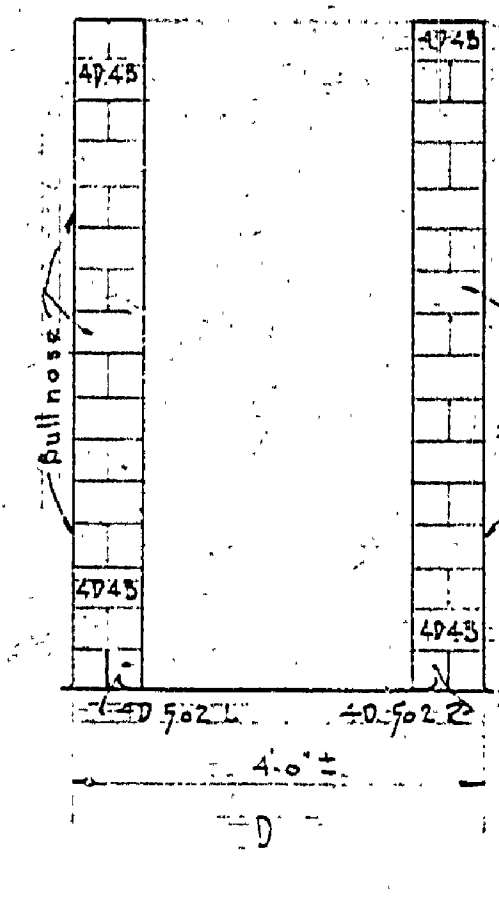
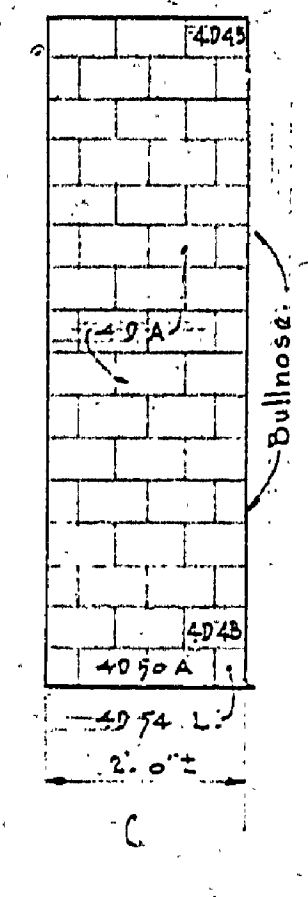
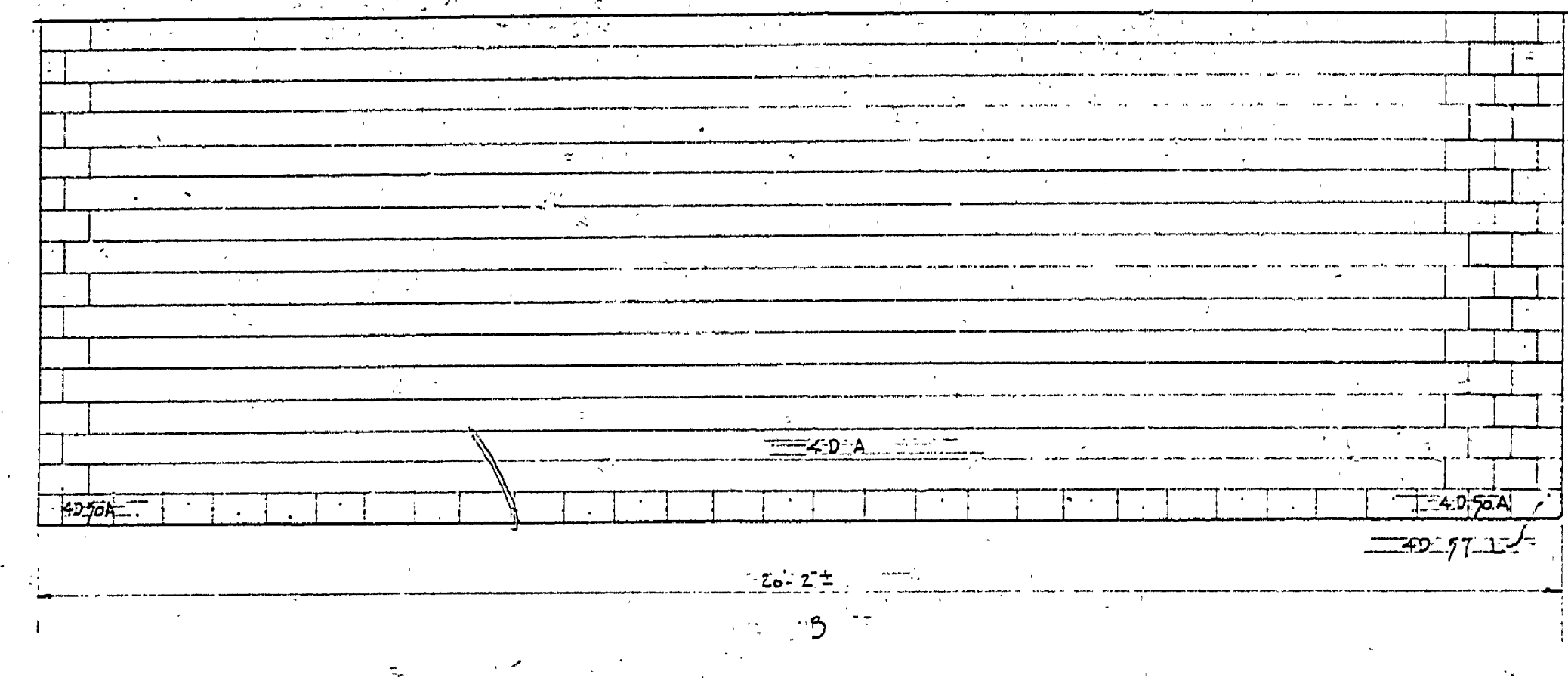
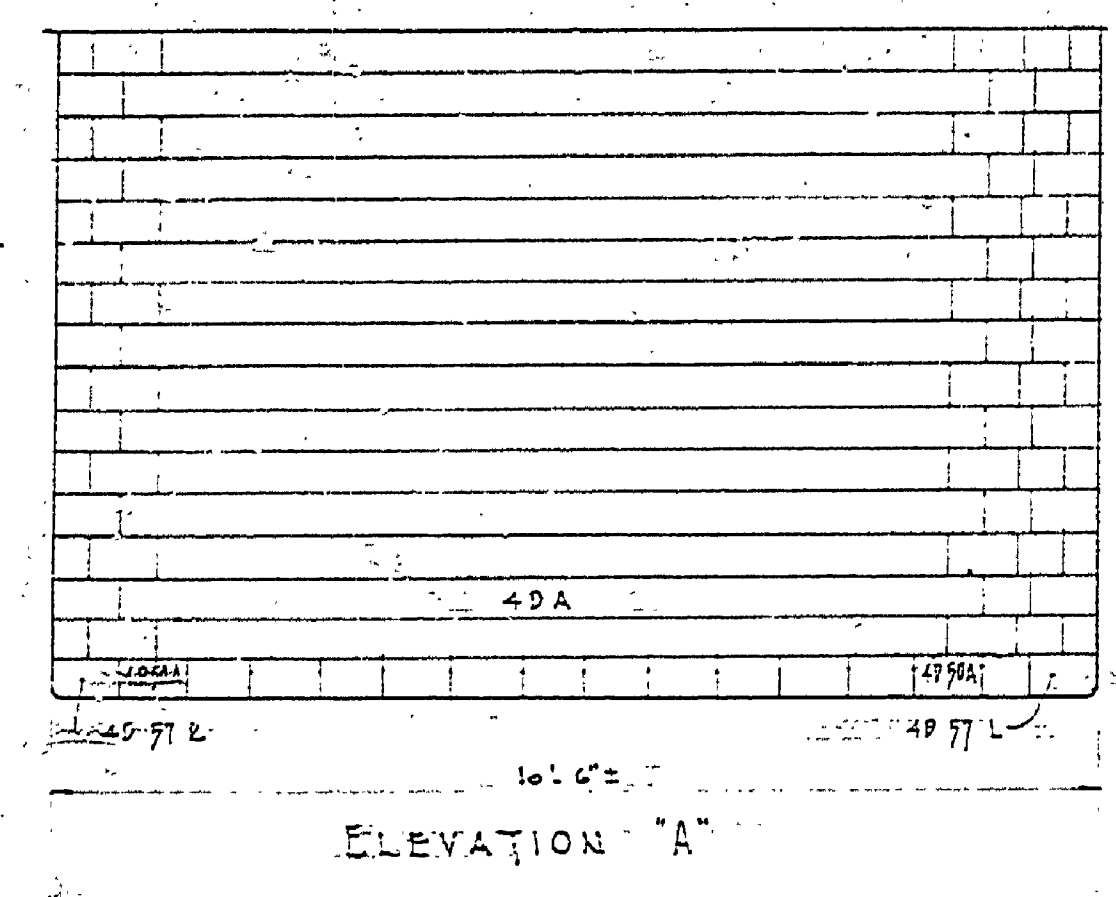
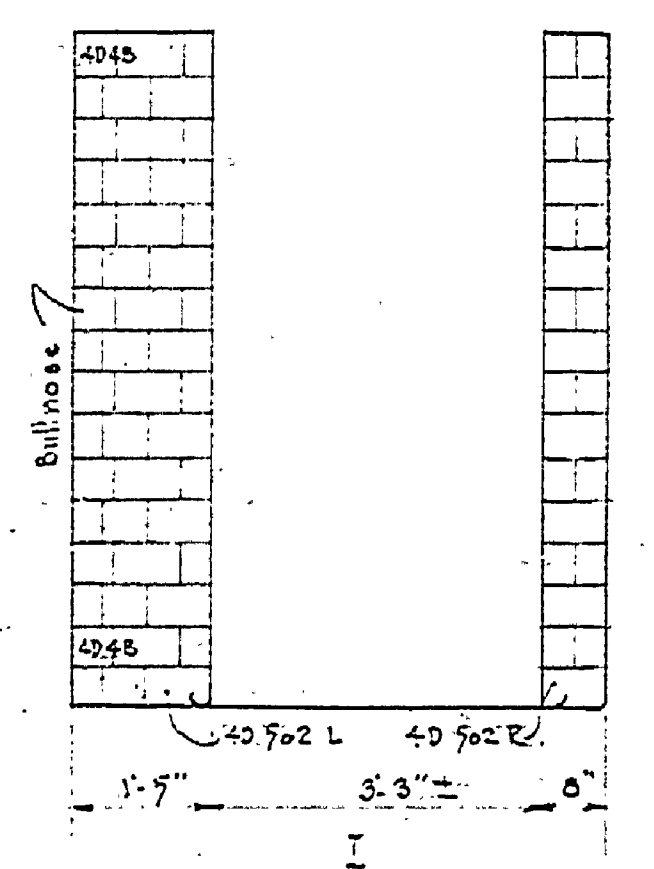
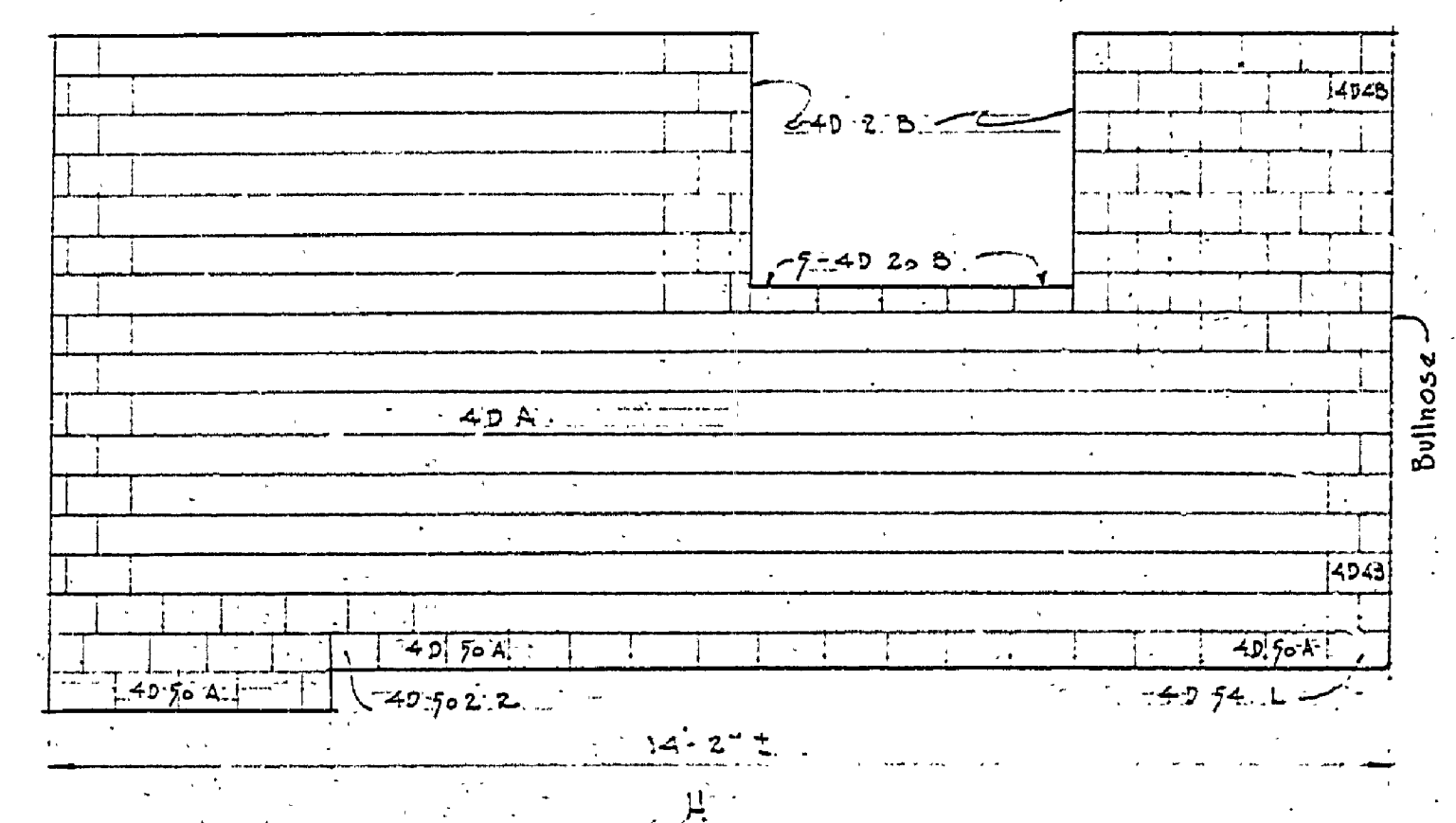
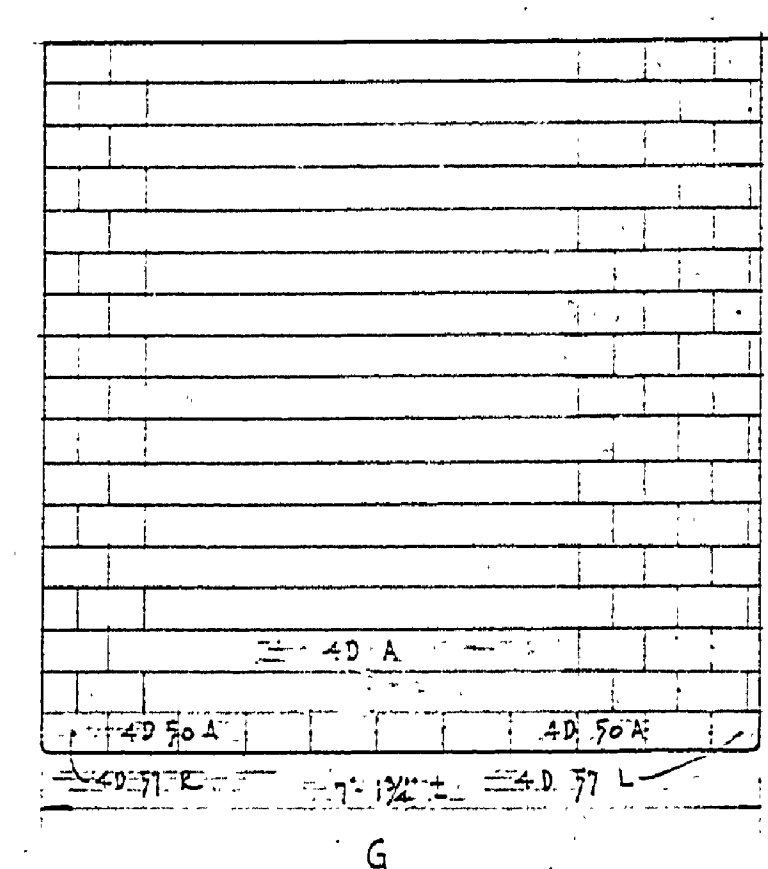
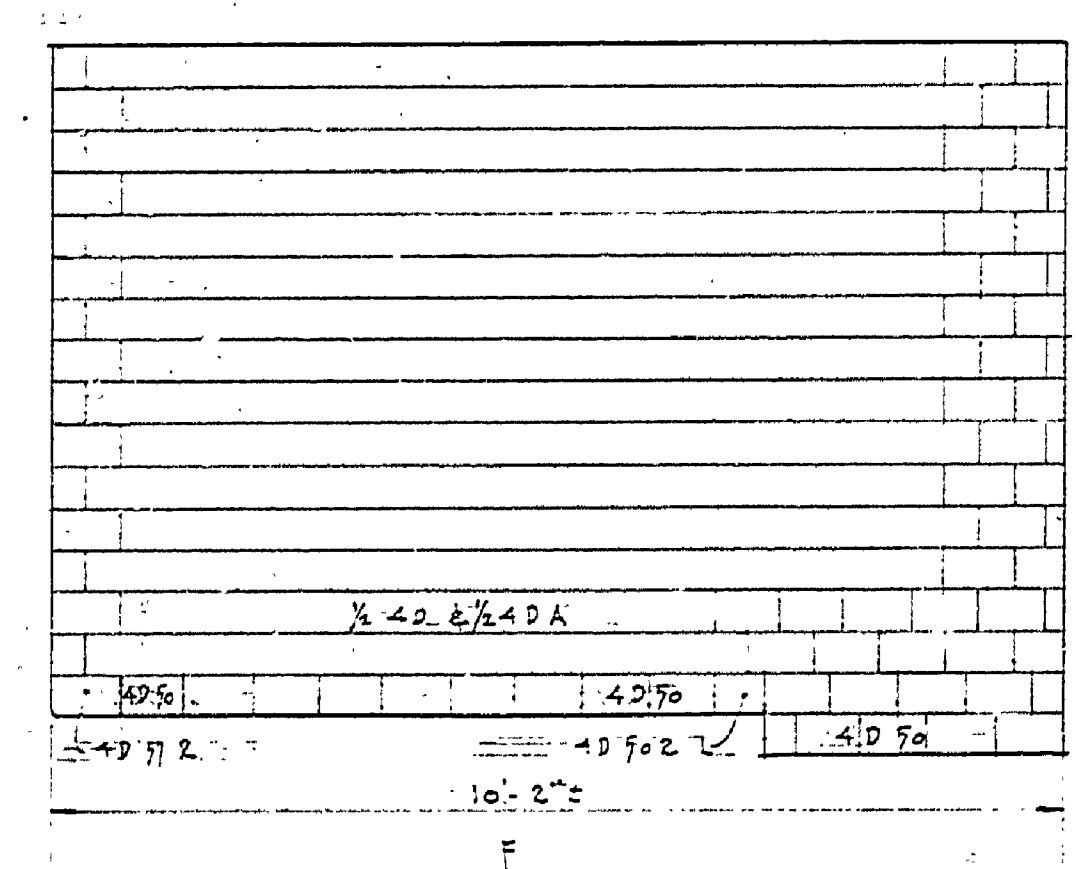


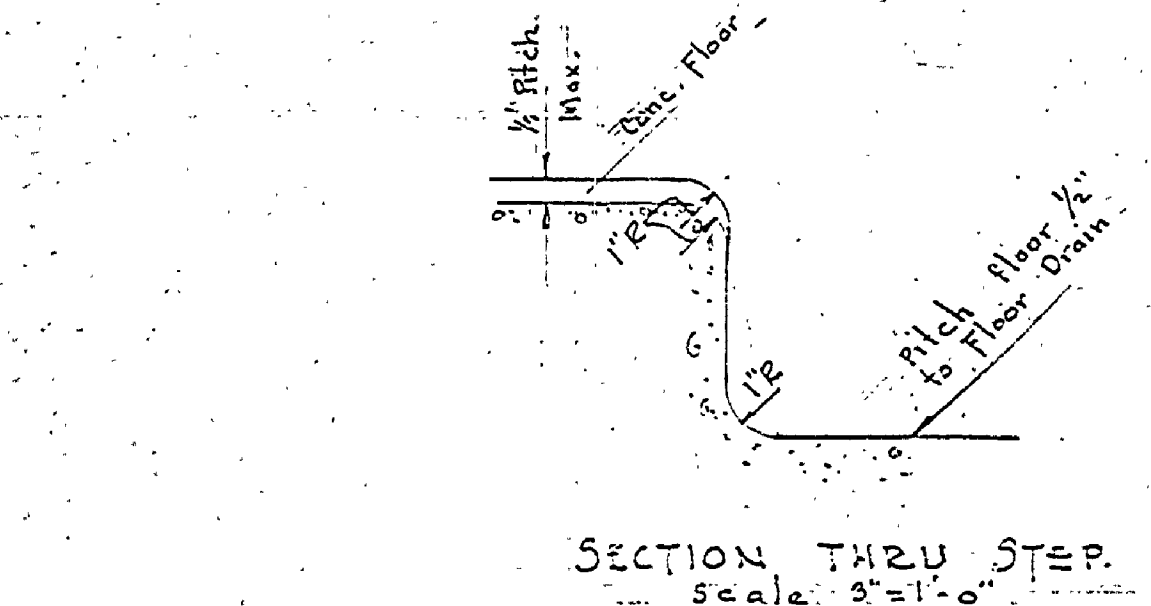
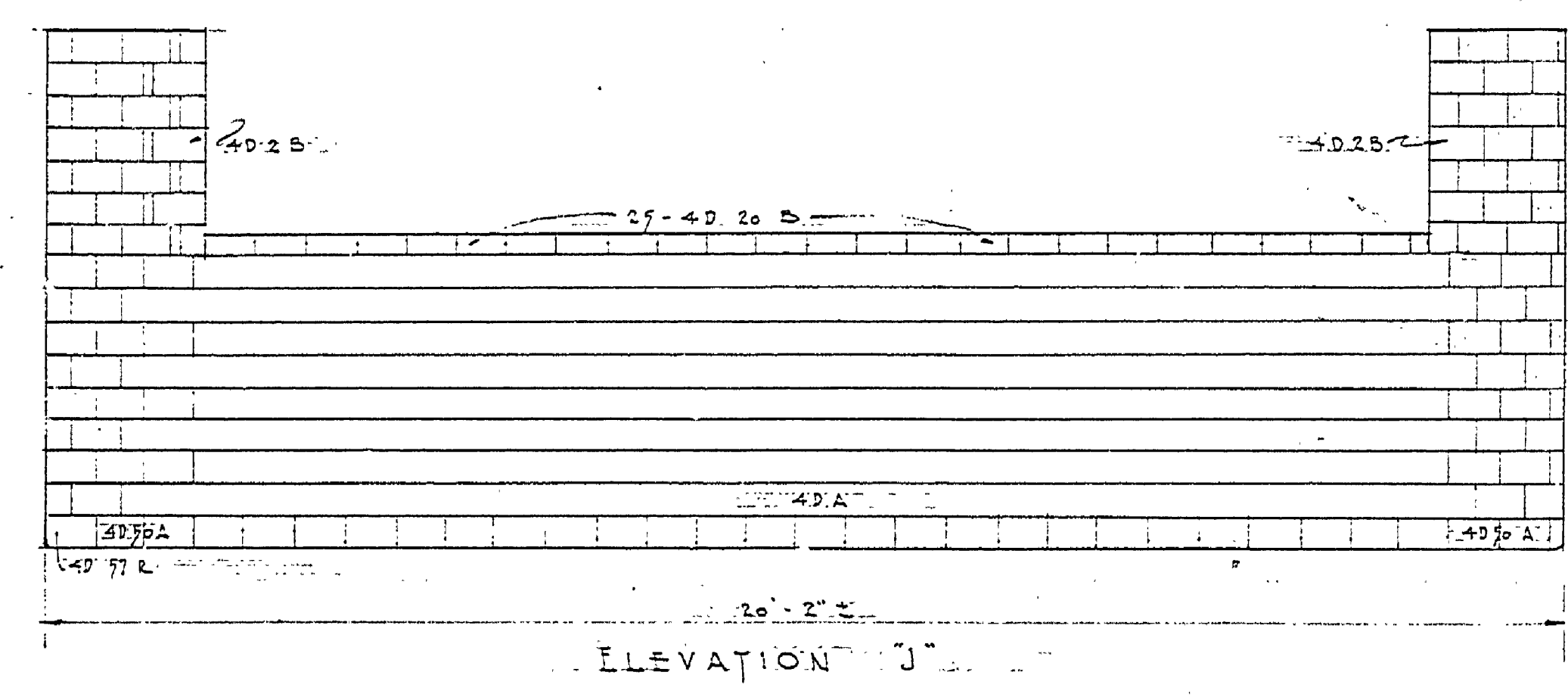
DRAWN BY		REVIEWED BY SECTIONS		APPROVED BY		NO. DATE		REVISIONS		DATE BY	
TRACED BY		ARCHITECTURAL		ASSISTANT CHIEF IN CHARGE		1 2/1/54		4			
CHECKED BY		ENGINEERING		OF DESIGN		2 7-5/54		5			
DATE		LANDSCAPE		DATE		3		6			
								3			
								4			
								5			
								6			



NOTE:
Men's toilet and shower
are reversed to Women's
toilet and shower see
Floor Plan Sheet 101

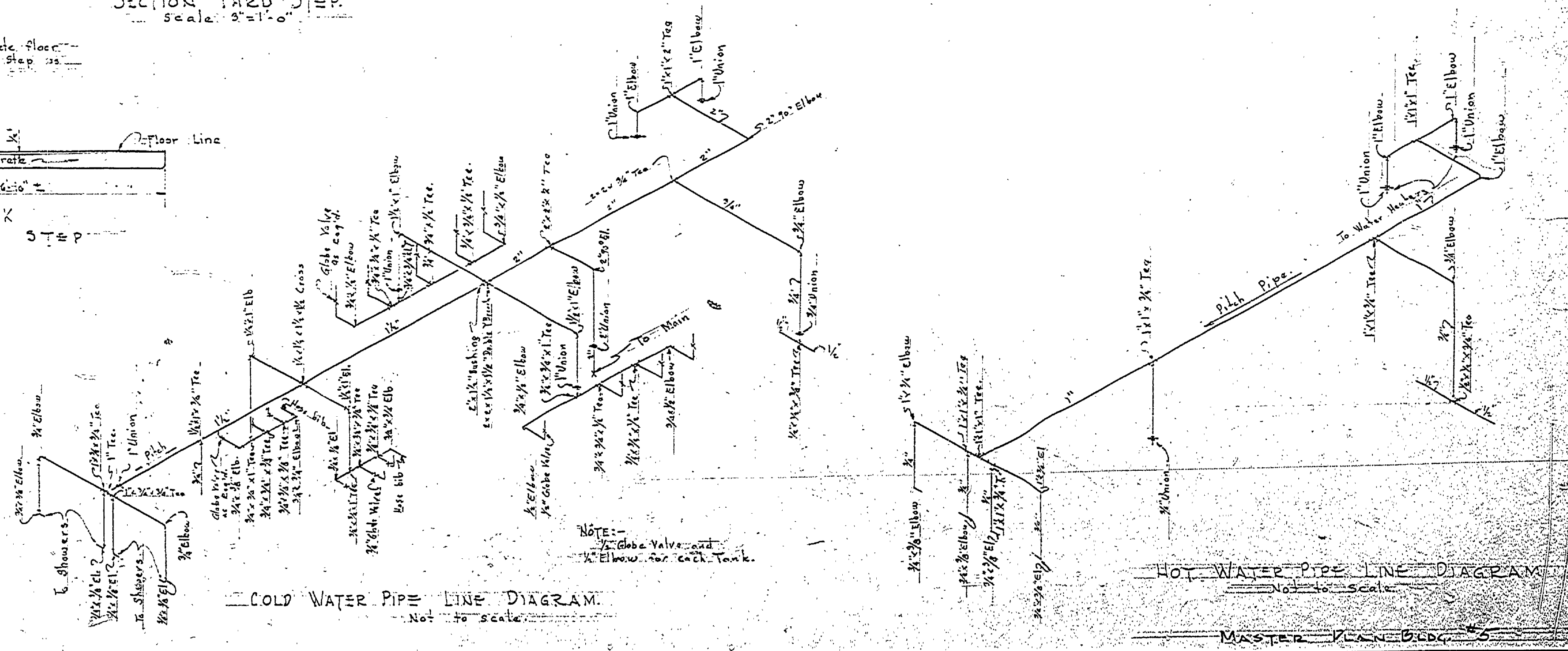


NOTE:
Men's Facility Base 40.50 A
Revisions to be interlocking
40.50 A



NOTE:
Pitch concrete floor
to floor drain
shown on plan

TILE LAYOUT OF WOMEN'S TOILET
MEN'S TOILET SIMILAR
Scale: 1/4" = 1'-0"



MICHIGAN
DEPARTMENT OF CONSERVATION
PARKS AND RECREATION DIVISION

HITCHENS LAKE STATE PARK
TOILET AND SHOWER BUILDING
C.A.M.P. GROUND AREA

SHEET
NO. 7
OF 7
PLAN NO.
A 102