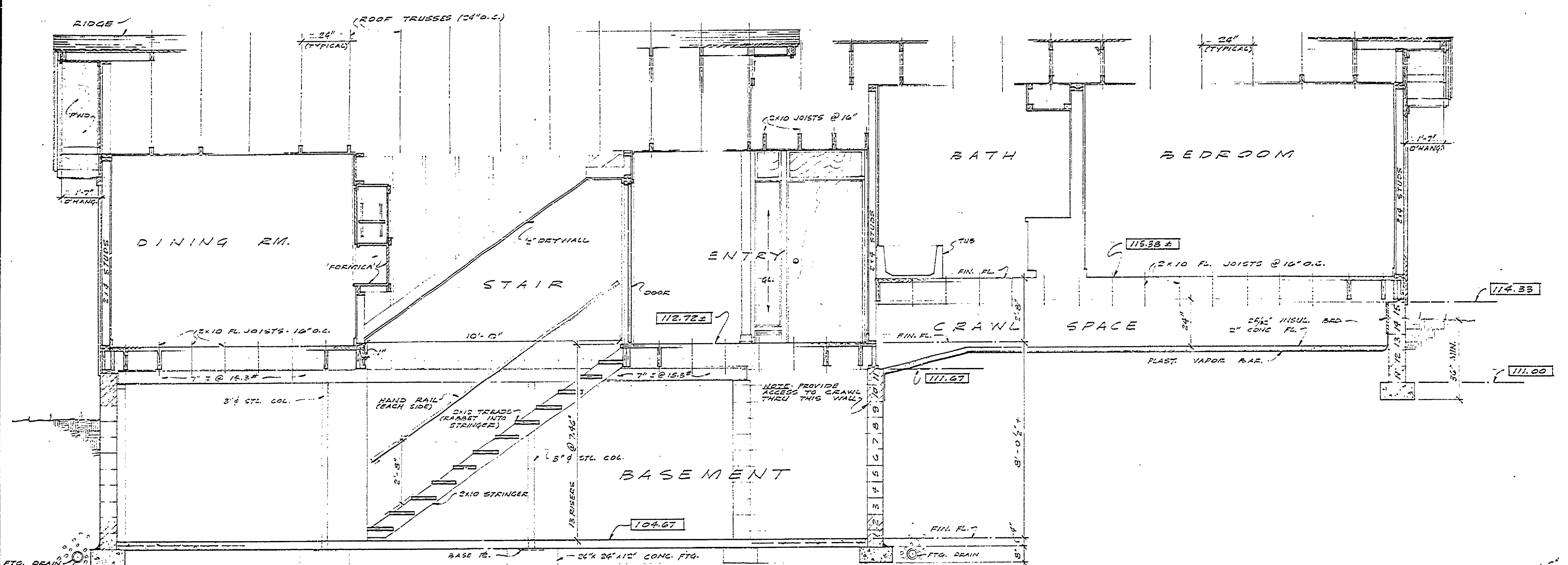
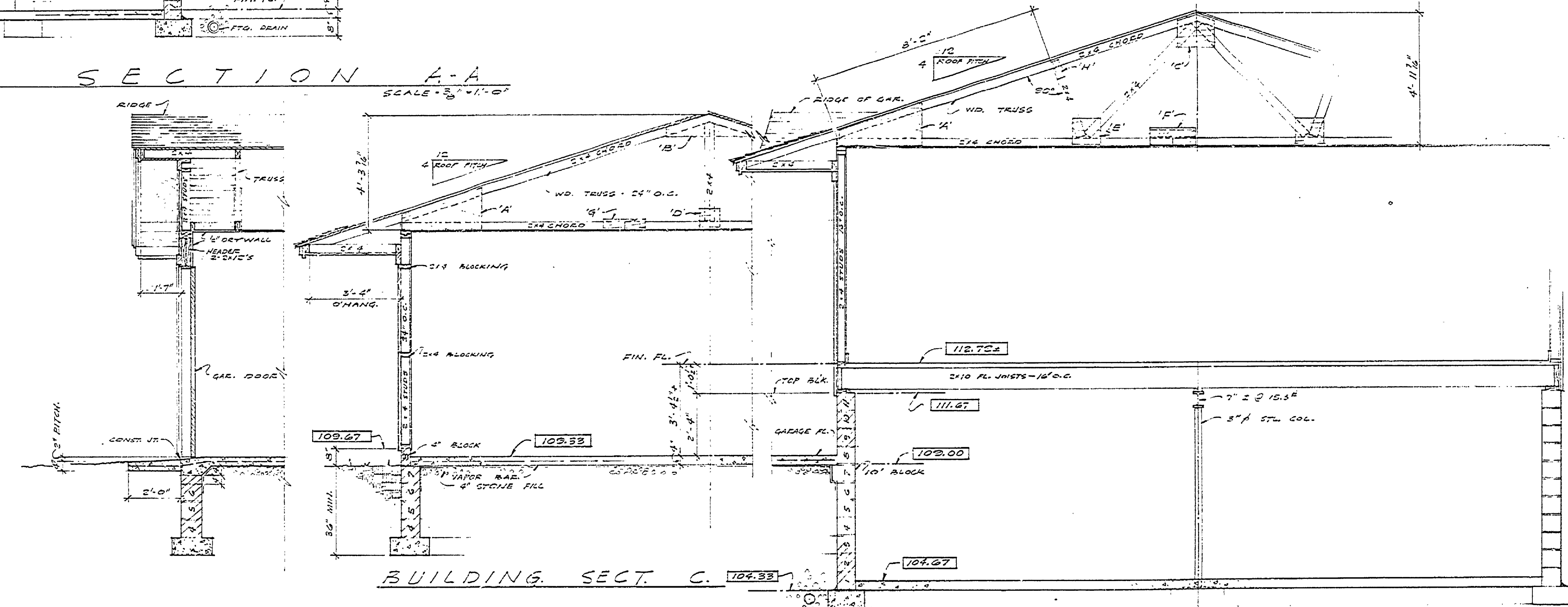


DESIGNED BY	DATE	REVIEWED	DATE	APPROVED	DATE NO.	DATE BY	REVISIONS
W.P. M.H.G.	4-6-65	ARCHITECTURAL			1		4
DRAWN BY		ENGINEERING			2		5
CHECKED BY		LANDSCAPE			3		6

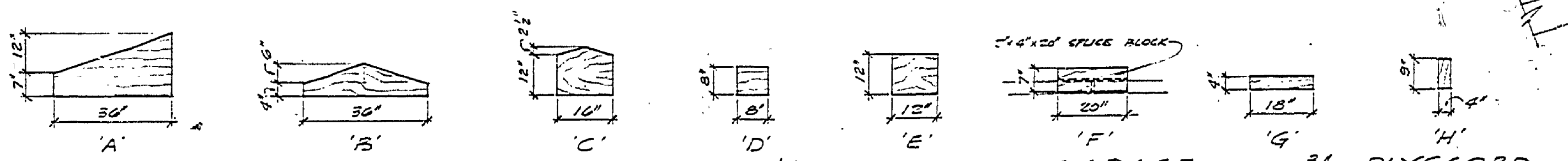


BUILDING SECTION A-A
SCALE = 3/8" = 1'-0"



BUILDING SECT. C.
SCALE = 3/8" = 1'-0"

BUILDING SECTION B-B
SCALE = 3/8" = 1'-0"



PLYWOOD GUSSET SIZES (USE 1/2" PLYSCORD - GARAGE 3/8" PLYSCORD - HOUSE)
 NOTES: A. GUSSETS SHOWN ARE FOR NAIL-GLUED TYPE TRUSSES USING 4-D NAILS & CASEIN GLUE
 B. GUSSETS REQUIRED AS SHOWN ON BOTH SIDES OF TRUSSES * MUST MEET FED. SPECS. MMMA-1-125, TYPE I OR II