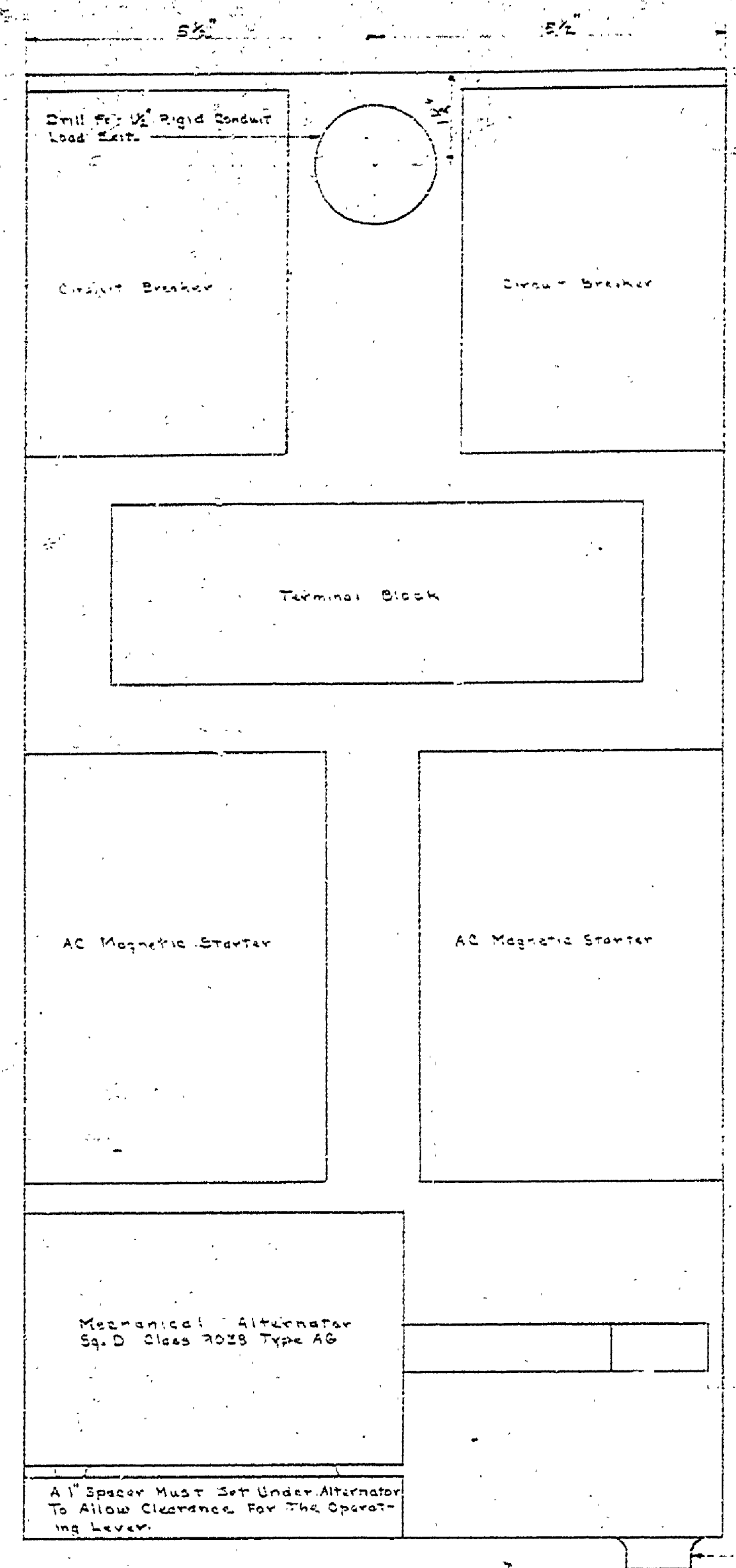
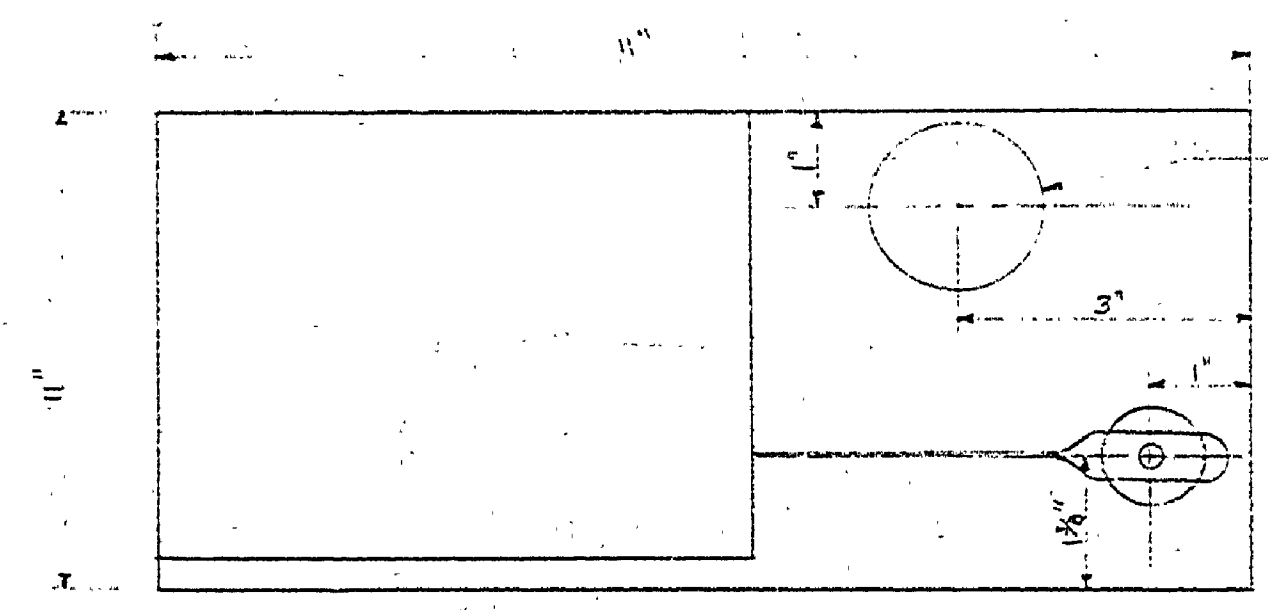


DRAWN BY G.H.G.	REVIEWED BY SECTIONS ARCHITECTURAL ENGINEERING LANDSCAPE	DATE 1/28/57	APPROVED BY <i>J.R.R.</i>	NO.	DATE	BY	REVISIONS
CHECKED BY E.J.P.		1/29/57		1			4
DATE 10/15/51, 1960				2			5
				3			6

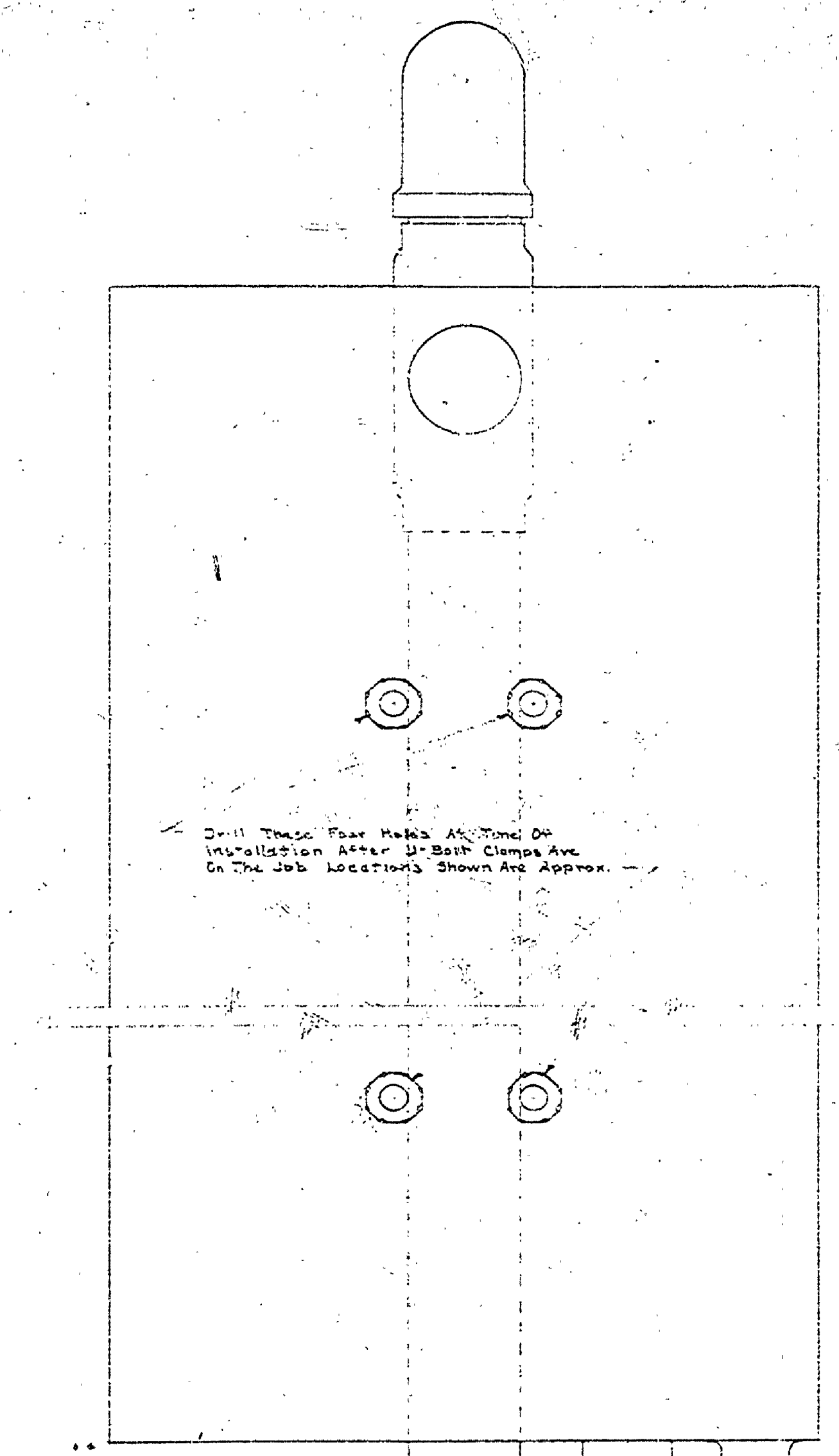


FRONT WITH COVER REMOVED



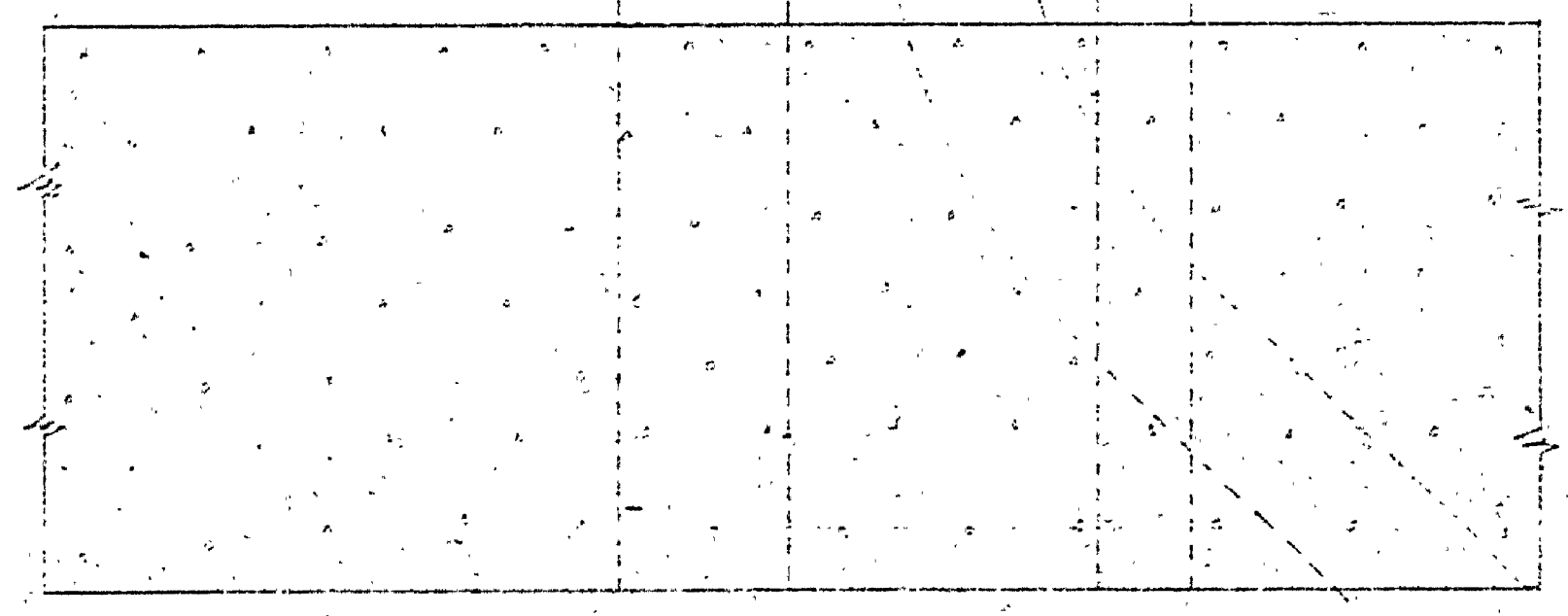
SECTION A-A

CONTROL FOR DUAL PUMPS



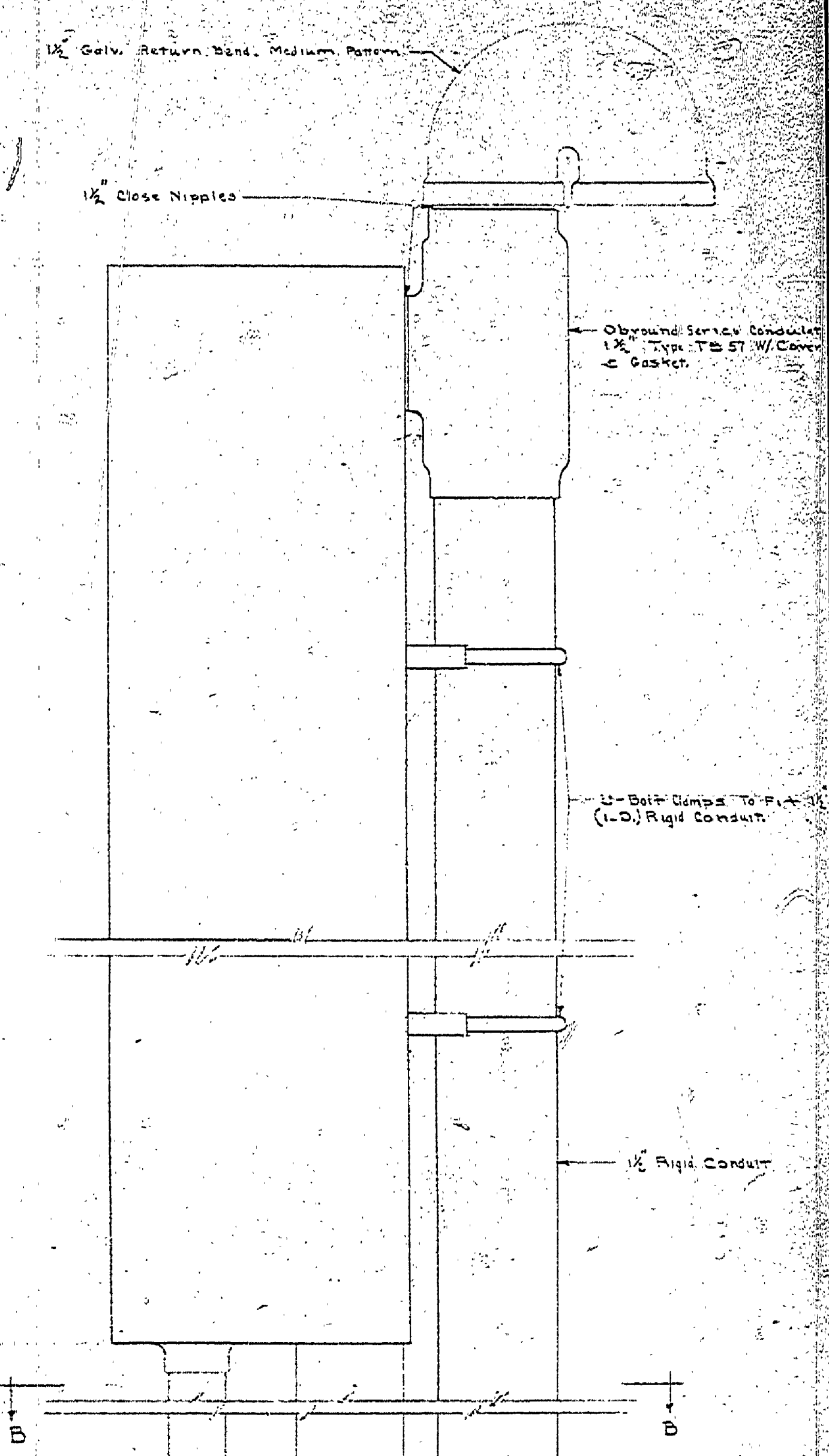
FRONT VIEW WITH COVER AND SWITCHES REMOVED

NOTE: Do Not Pour Top Slab Of Wet Well Until After Panel Pedestal Is Assembled And Set In Position In Forms For Top Slab. The Float Rod Guide Must Be Plumb. The 1/2\"/>

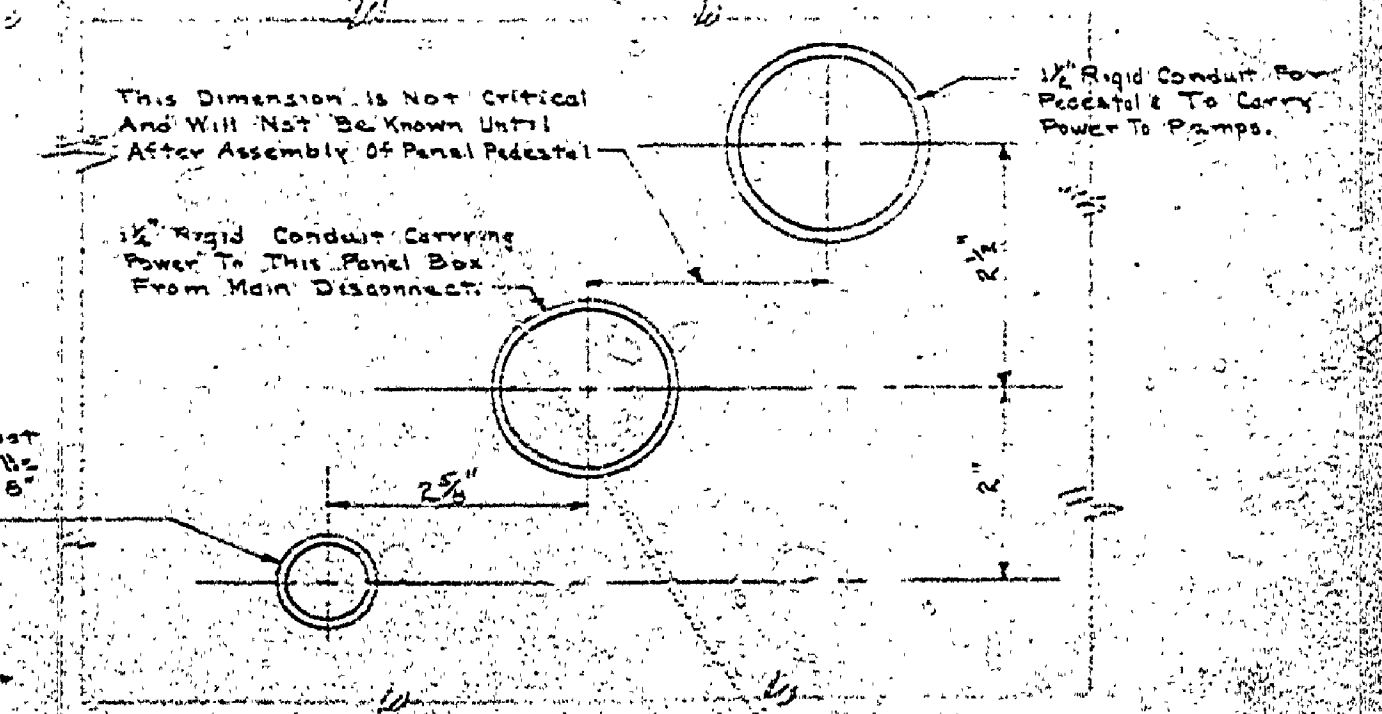


Use A 1/2\"/>

PANEL PEDESTAL INSTALLATION DETAILS



SIDE VIEW



SECTION B-B

220 V. 3 $\phi$  PUMP CONTROL PANEL

MICHIGAN DEPARTMENT OF CONSERVATION PARKS AND RECREATION DIVISION

HIGGINS LAKE STATE PARK CENTRAL DISPOSAL SYSTEM

SHEET NO. 7 OF 7 PLAN NO. E-105