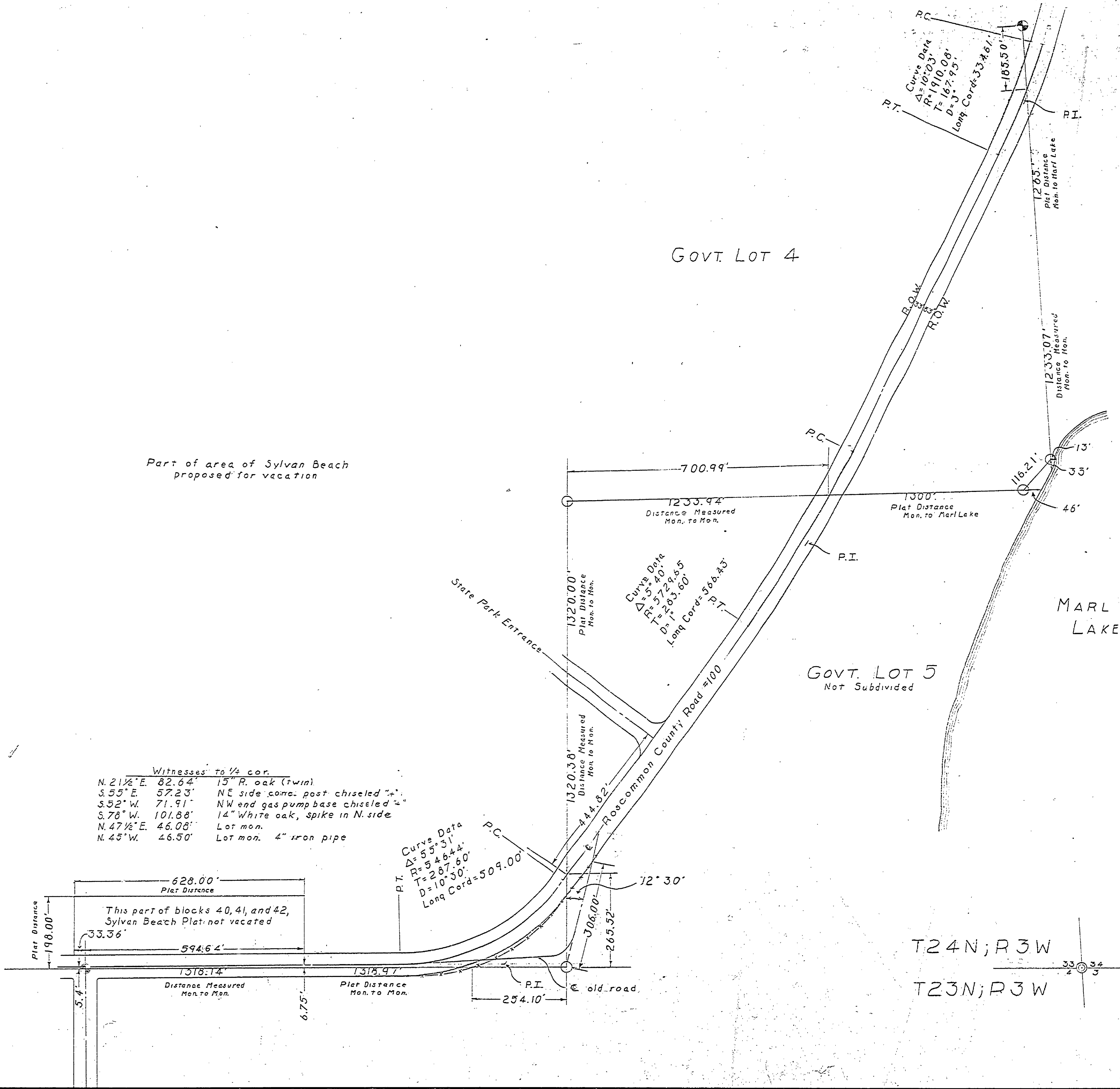


2 WP 12-21-58
 3 WP 11-26-58
 13P 1-26-61



LEGEND

Right Of Way

Section Corner

1/2 Corner

Existing Monument

Fence

MICHIGAN DEPARTMENT OF CONSERVATION ENGINEERING AND ARCHITECTURE ADMINISTRATIVE SERVICES		
HIGGINS LAKE STATE PARK PLAT SURVEY SURVEY OF COUNTY ROAD #100 Roscommon County		
APPROVED	ENGINEER IN CHARGE	DATE
APPROVED	CHIEF OF ENGINEERING DIVISION	DATE
APPROVED	REG. PROF. ENGINEER OR ARCHITECT	DATE
SURVEYED BY	W. L. Paddison 12/28	
DESIGNED BY	E. F. Sutherland 12/28	
CHECKED BY	DATE	
PLAN X-72A-1		REVISION
SHEET		DATE
1 OF 1		DATE

E-121 X-72A