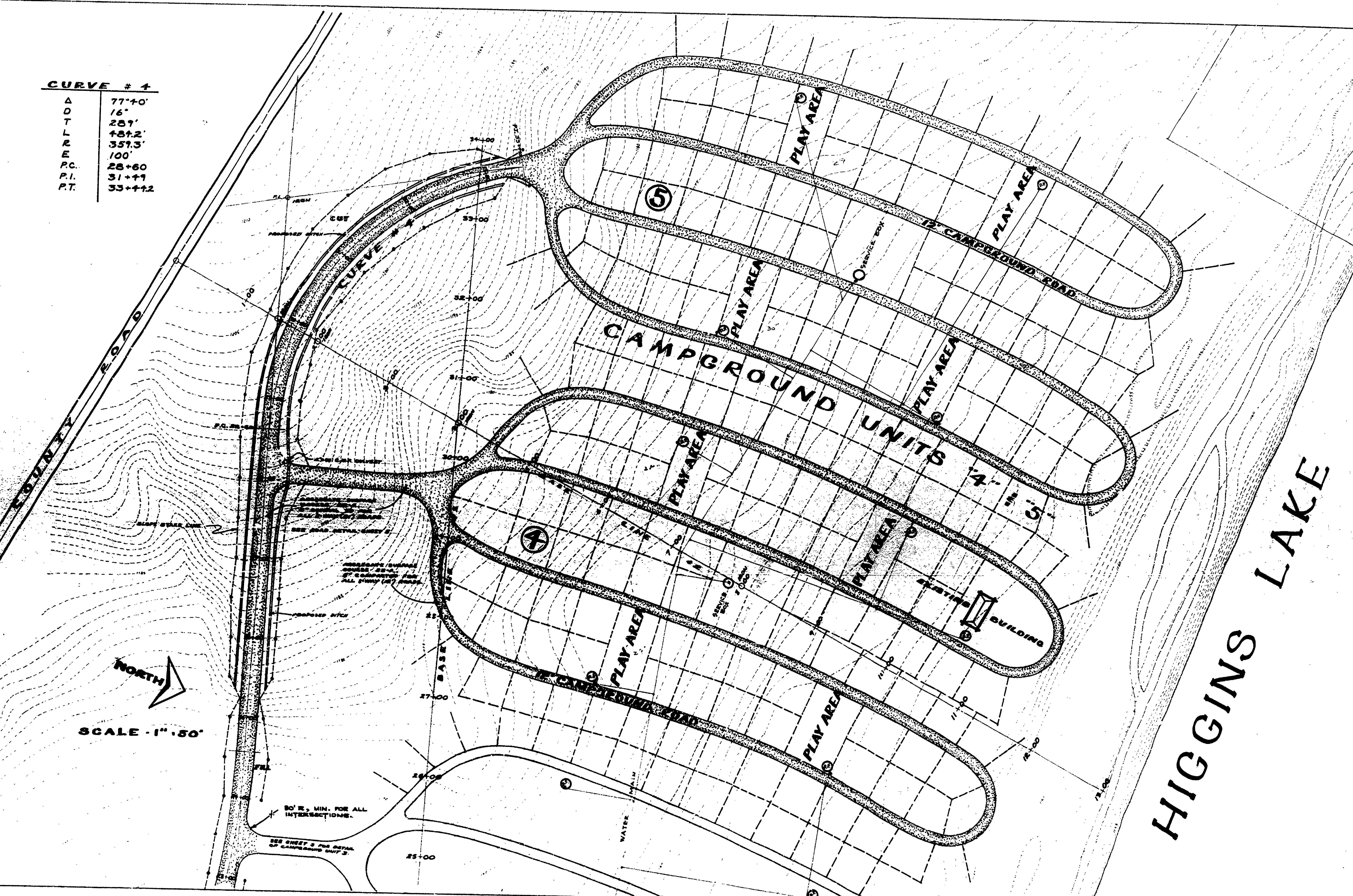


DATE	REVISIONS	DATE	REV.	DATE	BY
	4		1		
			2		
			3		

CURVE # 4
 Δ 77°10'
 D T 16'
 L 289'
 R E 1484.2'
 P.C. 357.3'
 P.I. 100'
 P.T. 28+60
 31+11
 33+44.2



HIGGINS LAKE

DESIGNED BY K.A.M.S.
 DRAWN BY S.A.M.
 CHECKED BY

ARCHITECTURAL
 ENGINEERING
 LANDSCAPE

NORTH
 SCALE - 1" = 50'

30' R. MIN. FOR ALL INTERSECTIONS.

SEE SHEET 3 FOR DETAIL OF CAMPGROUND UNIT 3.

MICHIGAN
 DEPARTMENT OF CONSERVATION
 PARKS AND RECREATION DIVISION

HIGGINS LAKE STATE PARK
 CAMPGROUND DEVELOPMENT
 UNITS 4 & 5

SHEET
 NO. 4
 OF 5

PLAN NO
 L-108