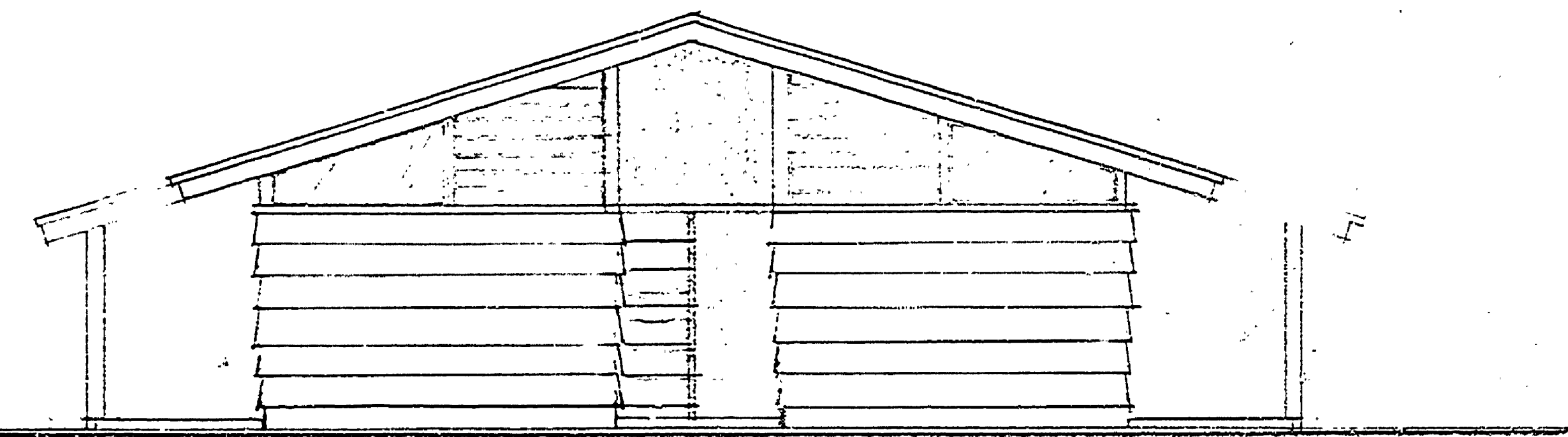
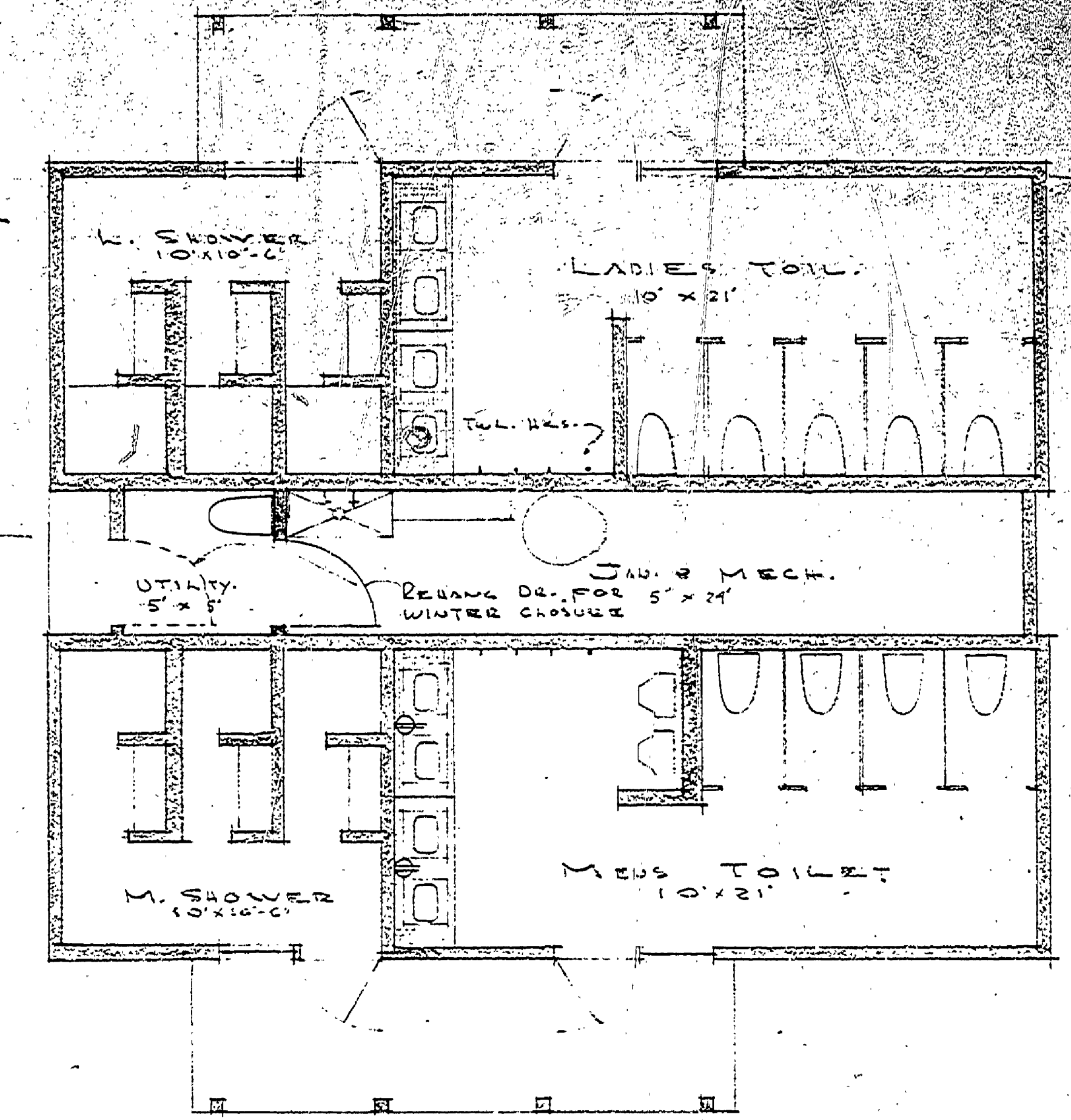
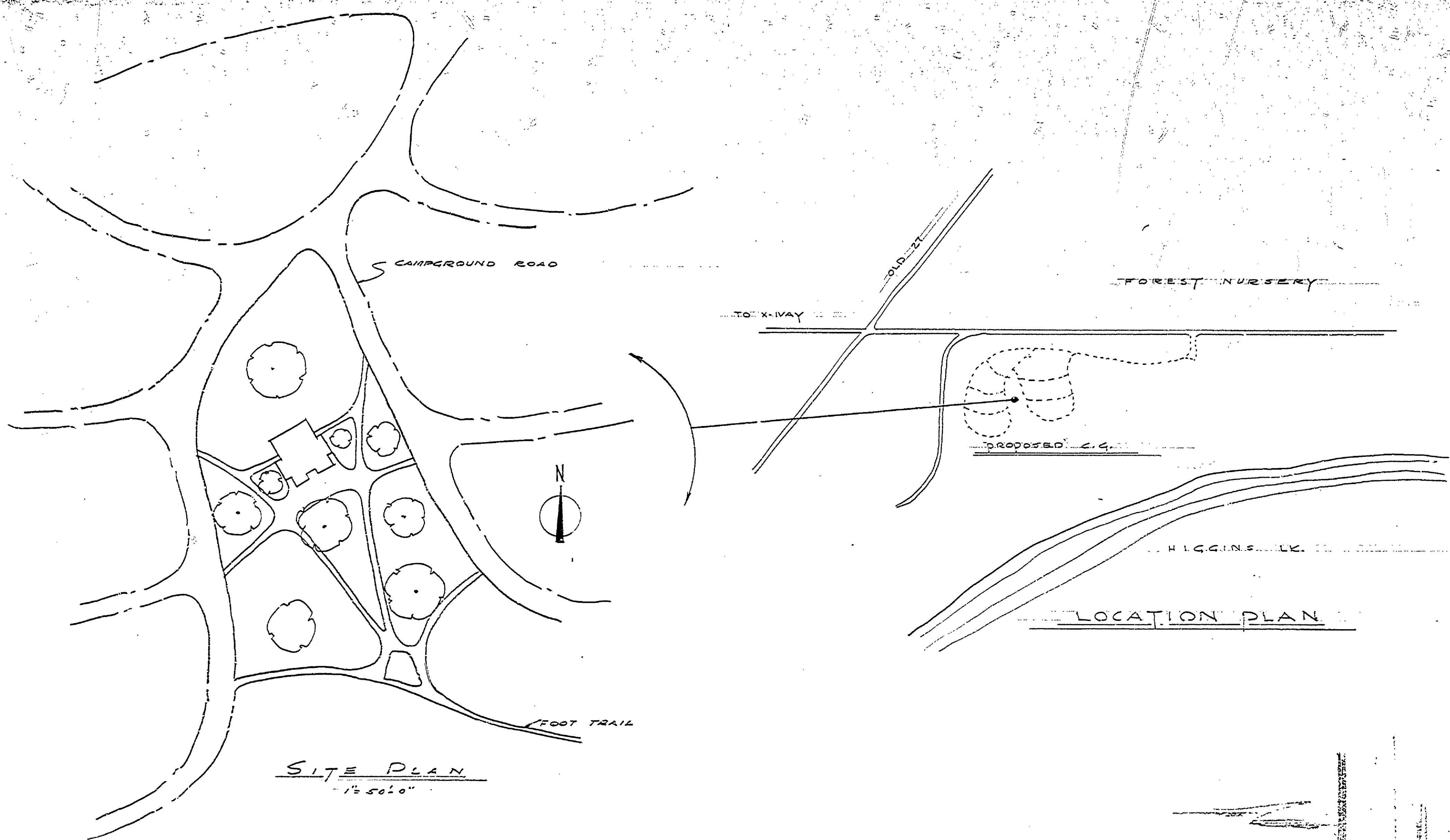
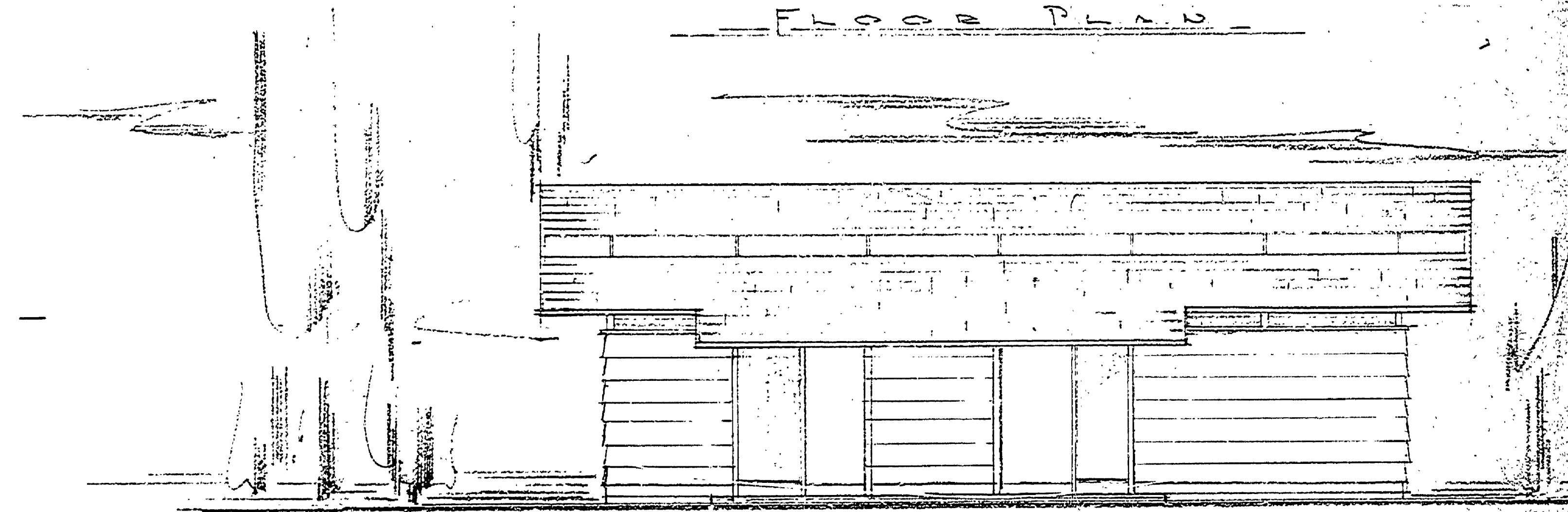


DESIGNED BY	DATE	REVIEWED	DATE	APPROVED	DATE	NO. DATE	REVISIONS
ARCHITECTURAL						1 10/15	REVISED PER M.L.R. COMM.
ENGINEERING						2 11/15	CHANGED W/AVENUE TO 15' WIDE E.P.
LANDSCAPE						3	
						4	
						5	
						6	



S. END ELEV.



E. SIDE ELEV.

CONSTRUCTION

FOUNDATION	BRICK CONC. & BLOCK MASONRY
FLOOR	CONC. SLAB ON GRADE - HYDROKROM SURFACE
INT. WALL	STRUCT. FACING TILE
EXT. WALL	WOOD FRAME 2\"/>
ROOF	WOOD SHAKES - FINESHED SKYLIGHT

CONSERVATION COMMISSION APPROVAL

BY: *[Signature]* DATE: 9-23-55

DESIGN: W.D. GARWOOD 11-3-55

RECOMMENDED FOR APPROVAL: 8/1/55

APPROVAL: *[Signature]* DATE: 11/15/55

MICHIGAN DEPARTMENT OF CONSERVATION

PLAN NO. A-1018 PROJECT NUMBER PR-46-258-300-011

MICHIGAN DEPARTMENT OF CONSERVATION  
PARKS AND RECREATION DIVISION

PROPOSED TOILET  
HIGGINS LAKE S.P.  
NORTH SHORE

SHEET NO. 1 OF 1  
PLAN NO. A-100