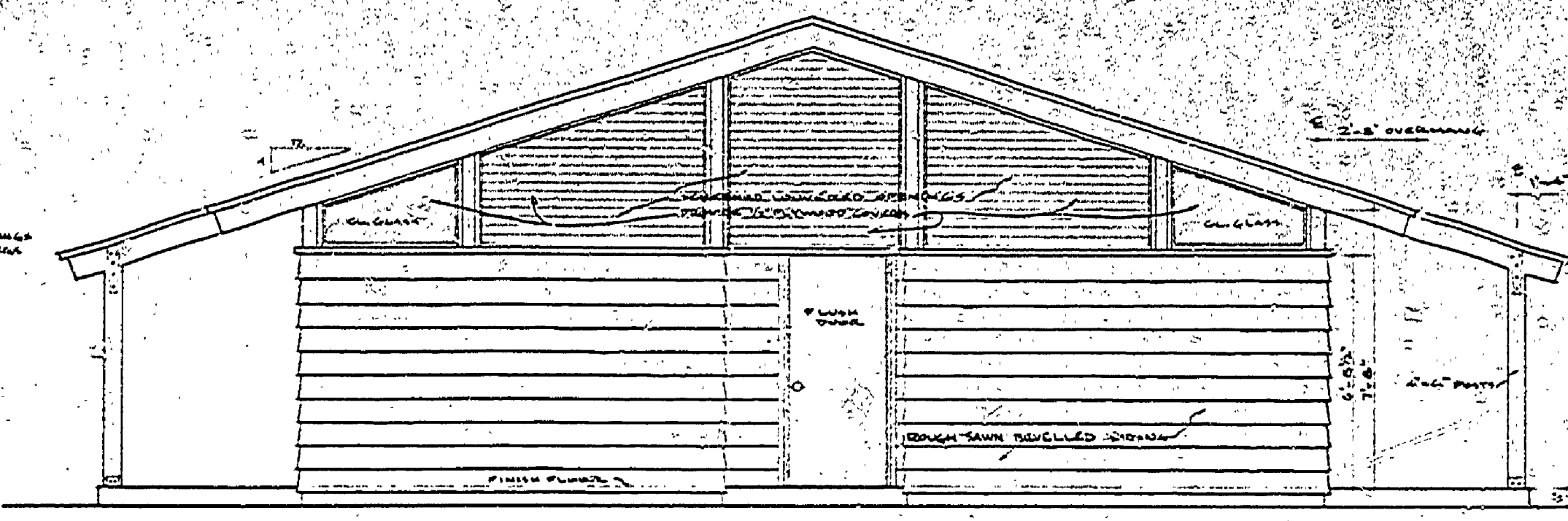
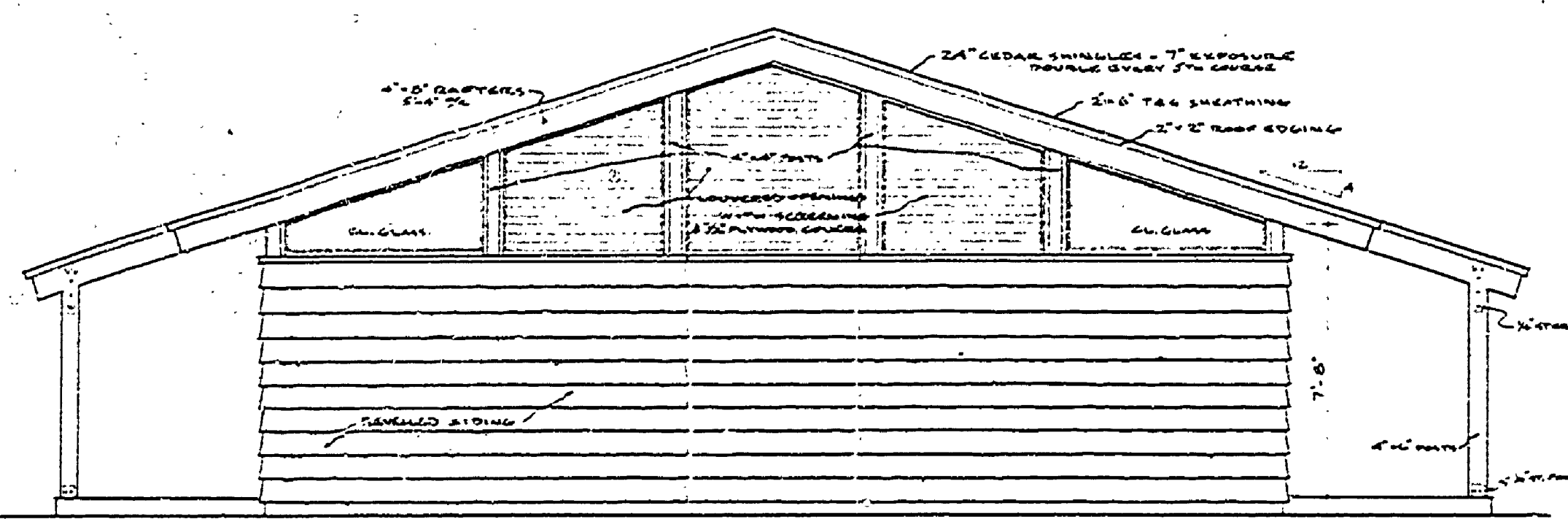


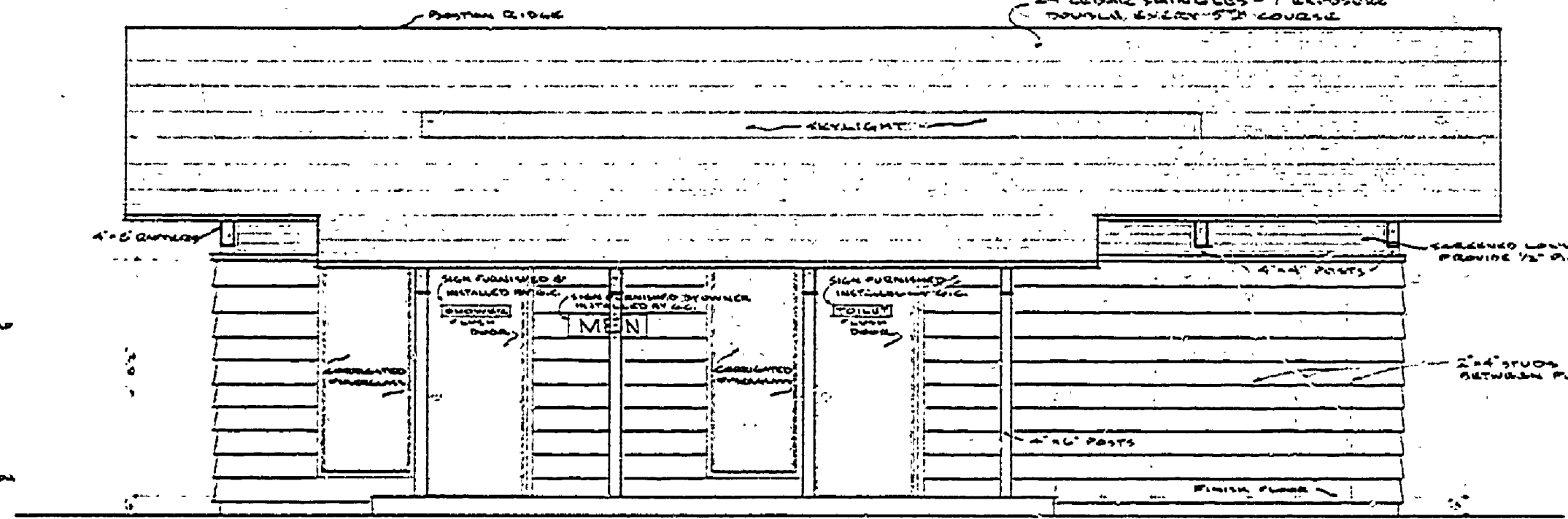
WEST ELEVATION
1/4" = 1'-0"



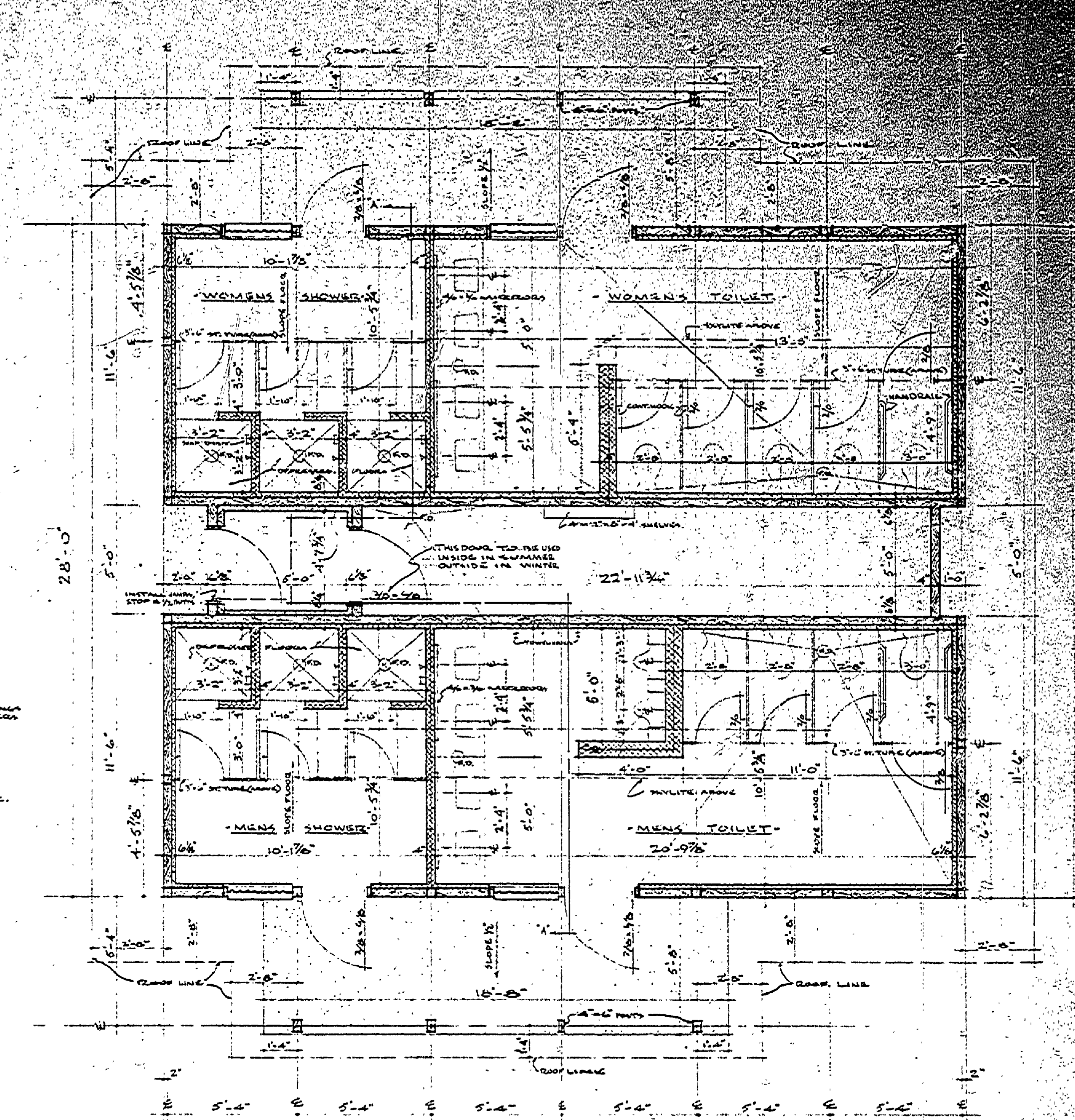
SOUTH ELEVATION
1/4" = 1'-0"



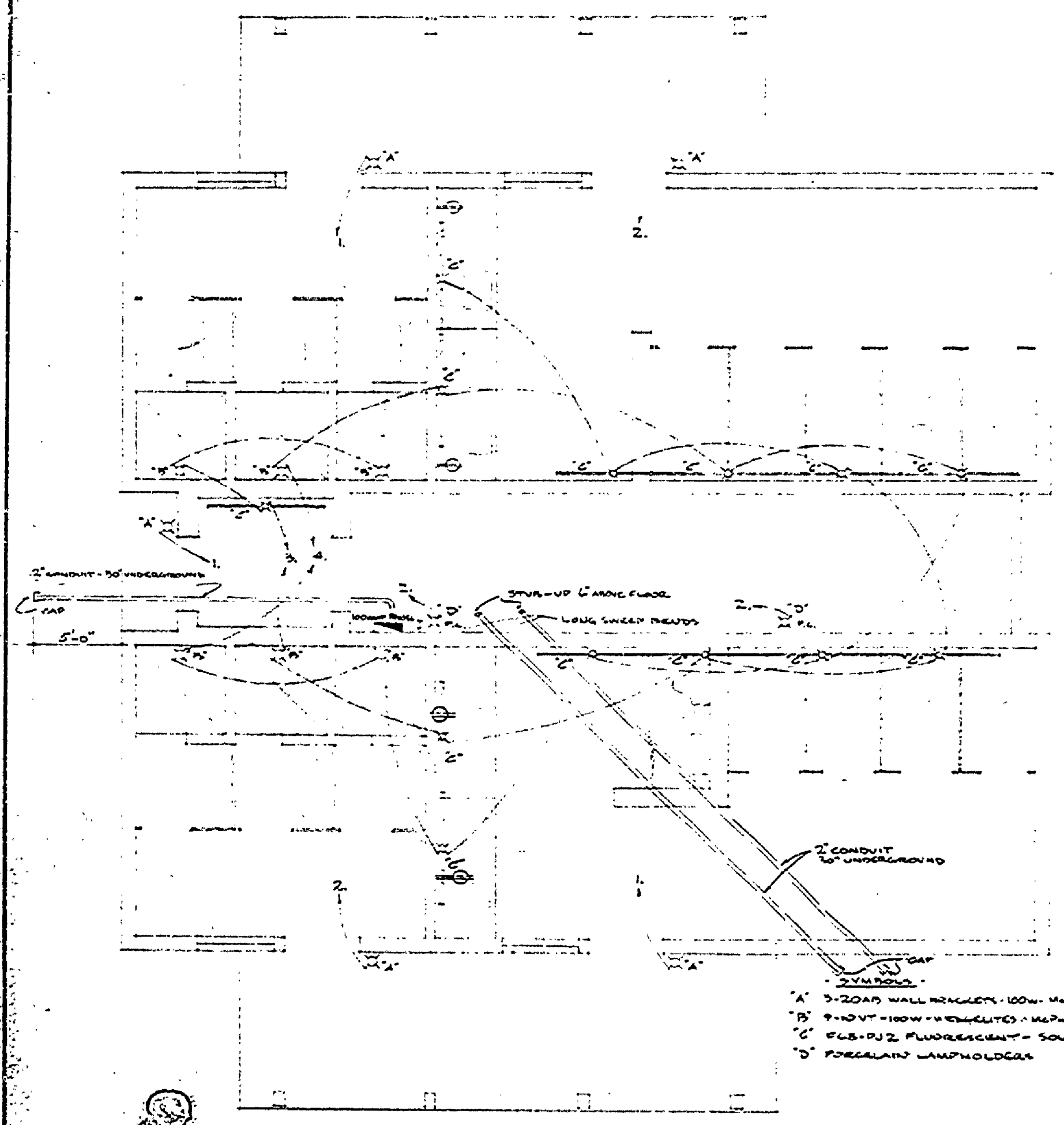
NORTH ELEVATION
1/4" = 1'-0"



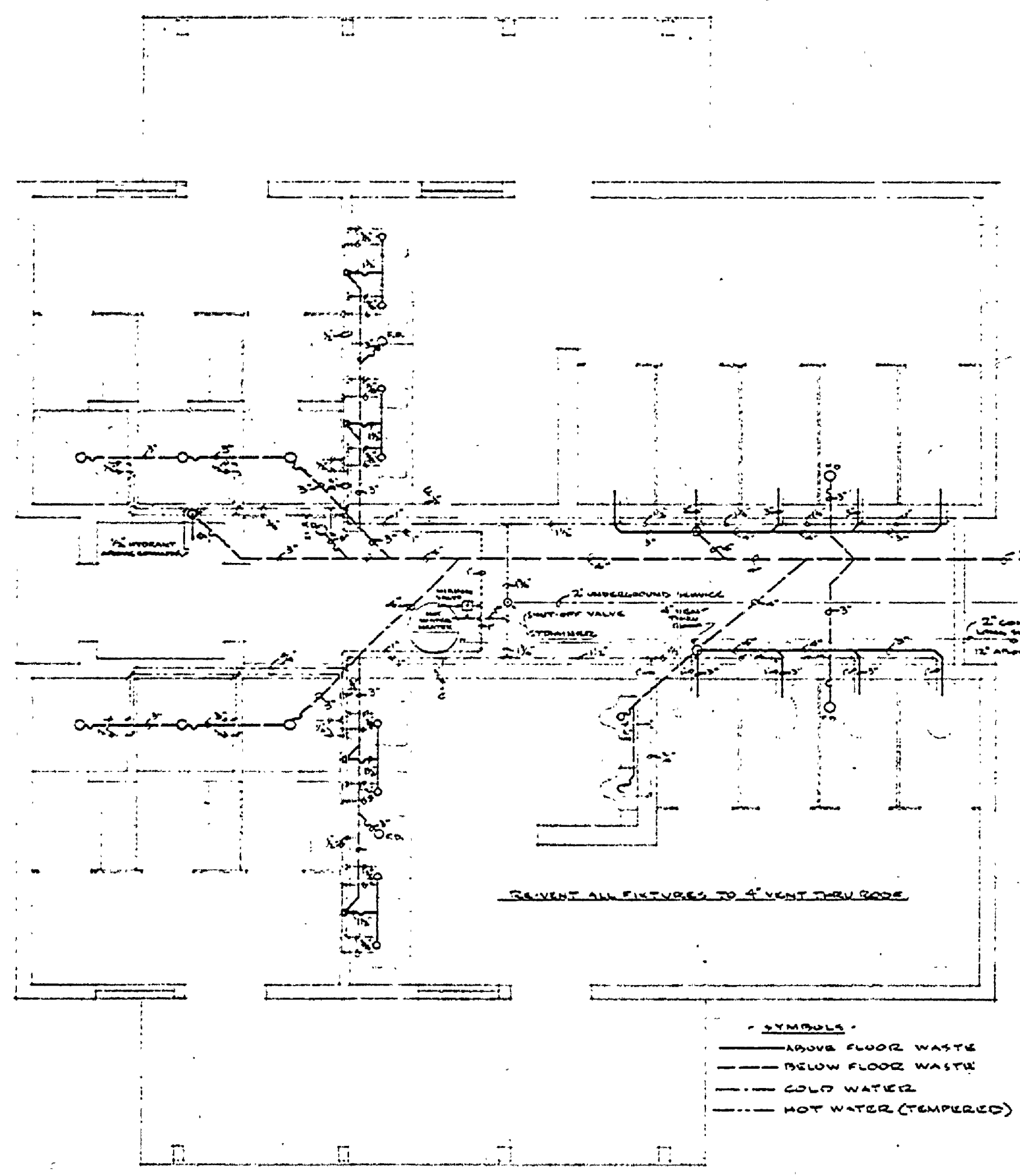
EAST ELEVATION
1/4" = 1'-0"



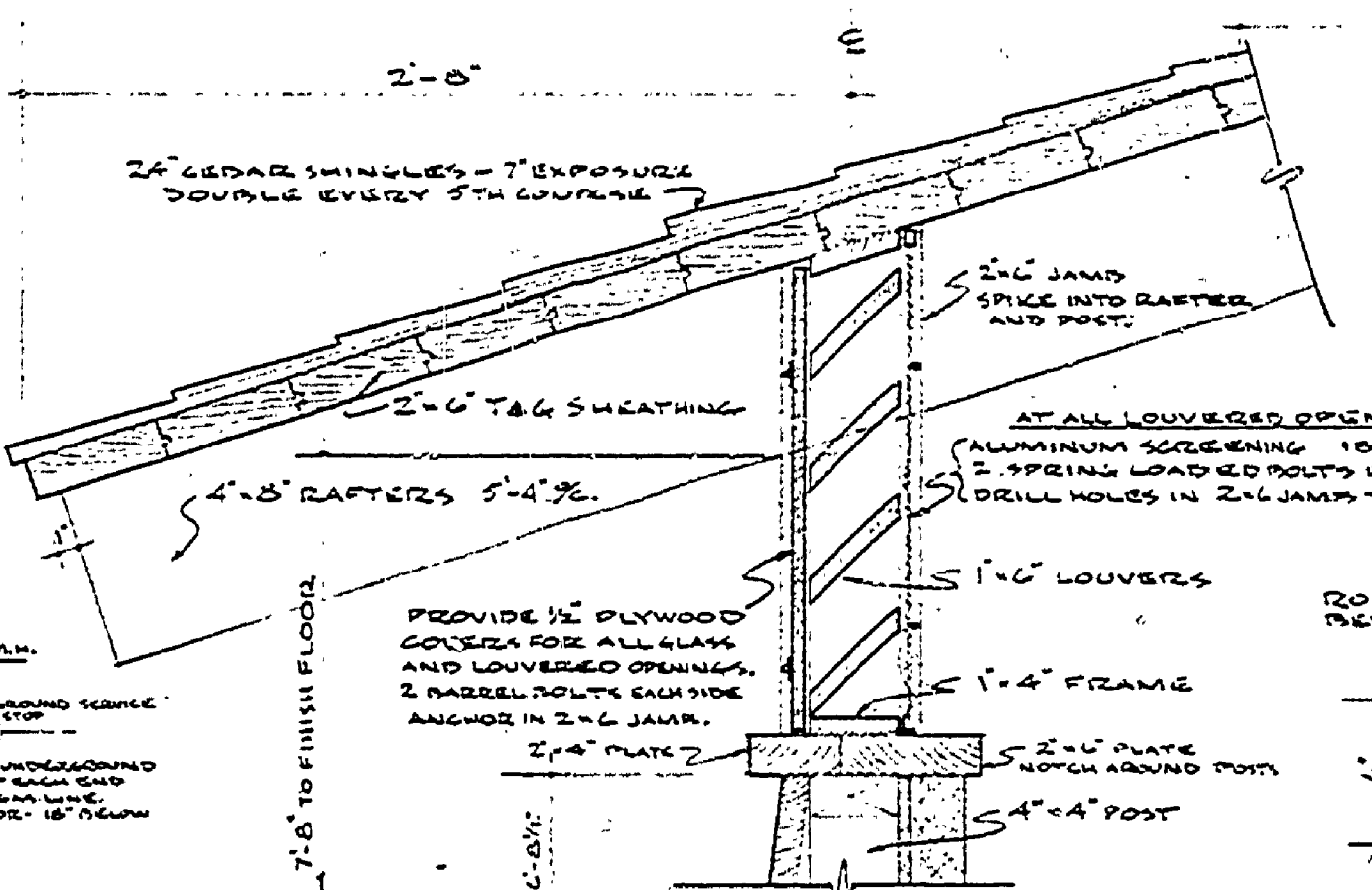
FLOOR PLAN
1/4" = 1'-0"



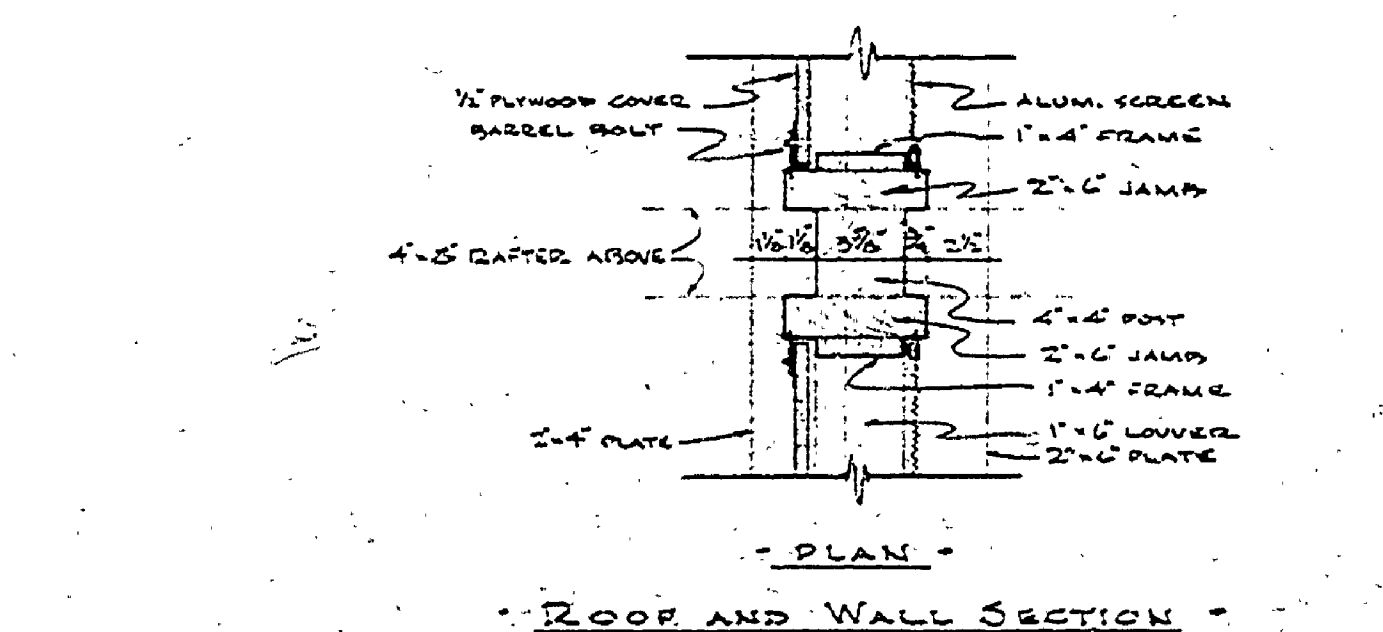
ELECTRICAL PLAN
1/4" = 1'-0"



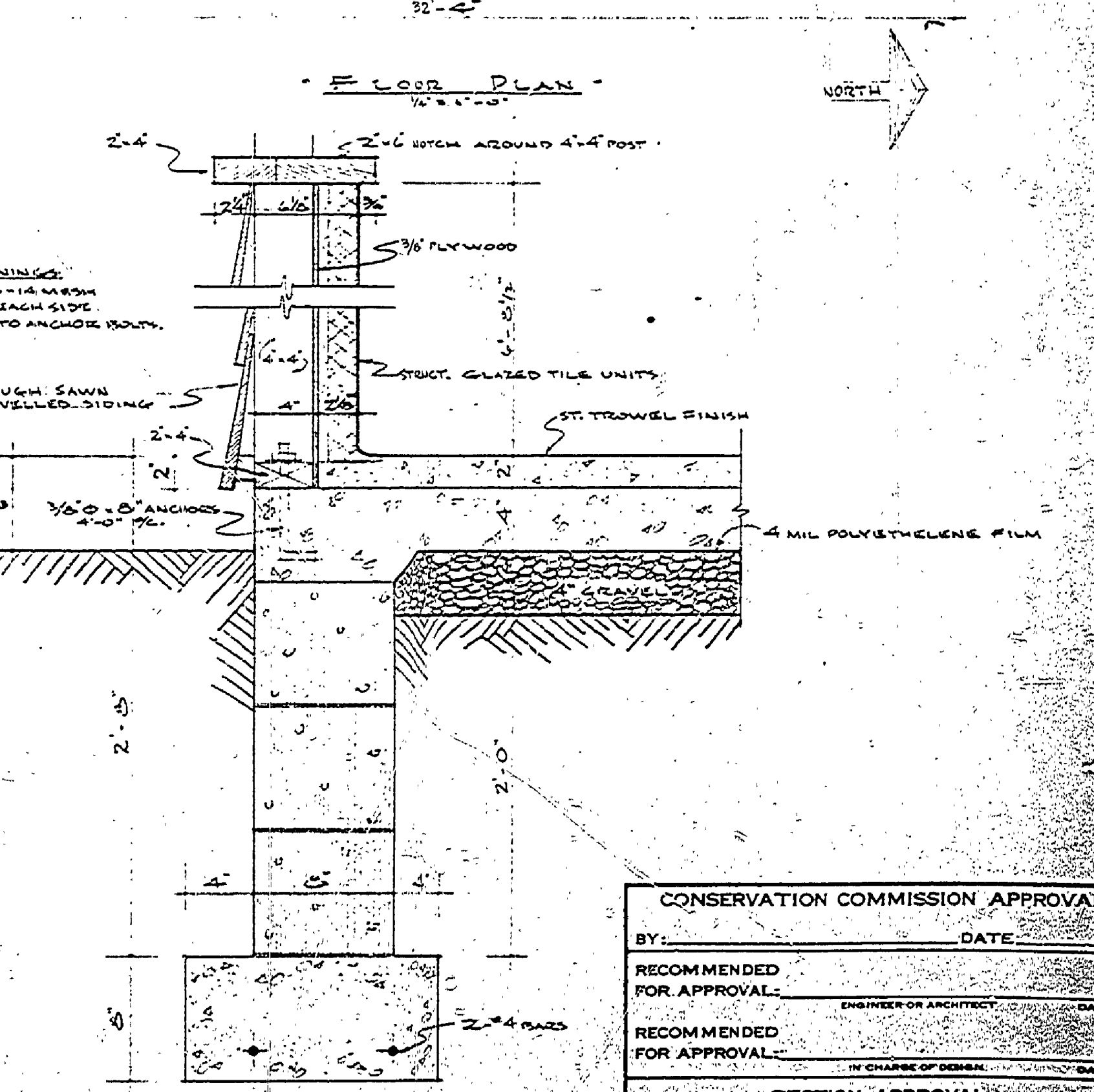
PLUMBING PLAN
1/4" = 1'-0"



SECTION



PLAN



FOUNDATION SECTION
1/4" = 1'-0"

SURVEYED BY	DRAWN BY	NO.	DATE	BY	REVISIONS	NO.	DATE	BY	REVISIONS
	DMH	12-65							
DESIGNED BY	CHECKED BY								
	WUC	1-66		B-84	Handskipped				

MICHIGAN
DEPARTMENT OF CONSERVATION

HIGGINS LAKES P. - NORTH SHORE
TOILET BUILDING

SHEET NO. 2 OF 3
FOR PROJECT NO. 012

CONSERVATION COMMISSION APPROVAL	
BY _____	DATE _____
RECOMMENDED FOR APPROVAL	ENGINEER OR ARCHITECT
RECOMMENDED FOR APPROVAL	BY CHIEF OF BUREAU
SECTION APPROVAL	
BY _____	DATE _____
ENGINEERING SECTION	
APPROVED _____	DATE _____
SHEET 2 OF 3 PLAN NO. 012	