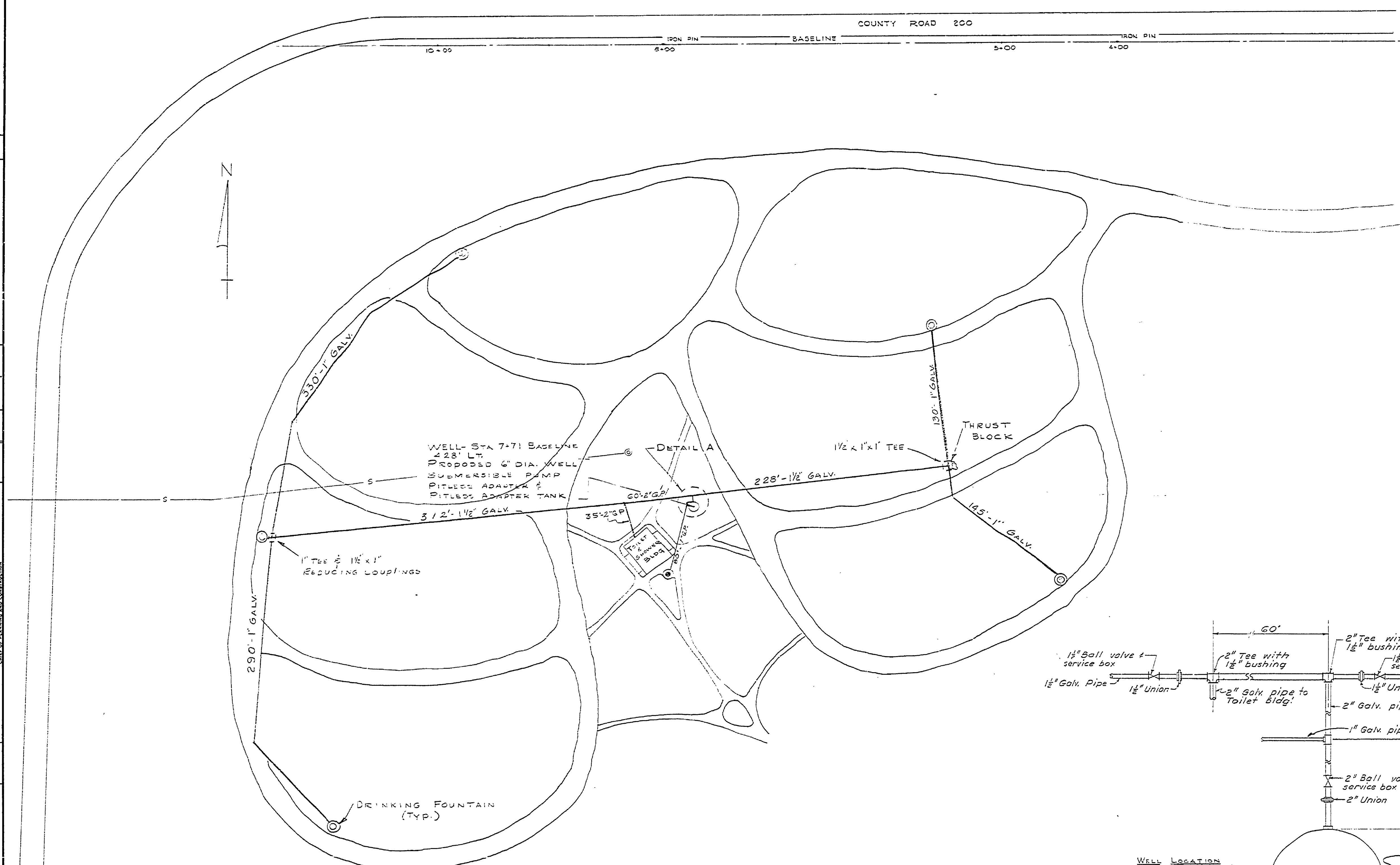
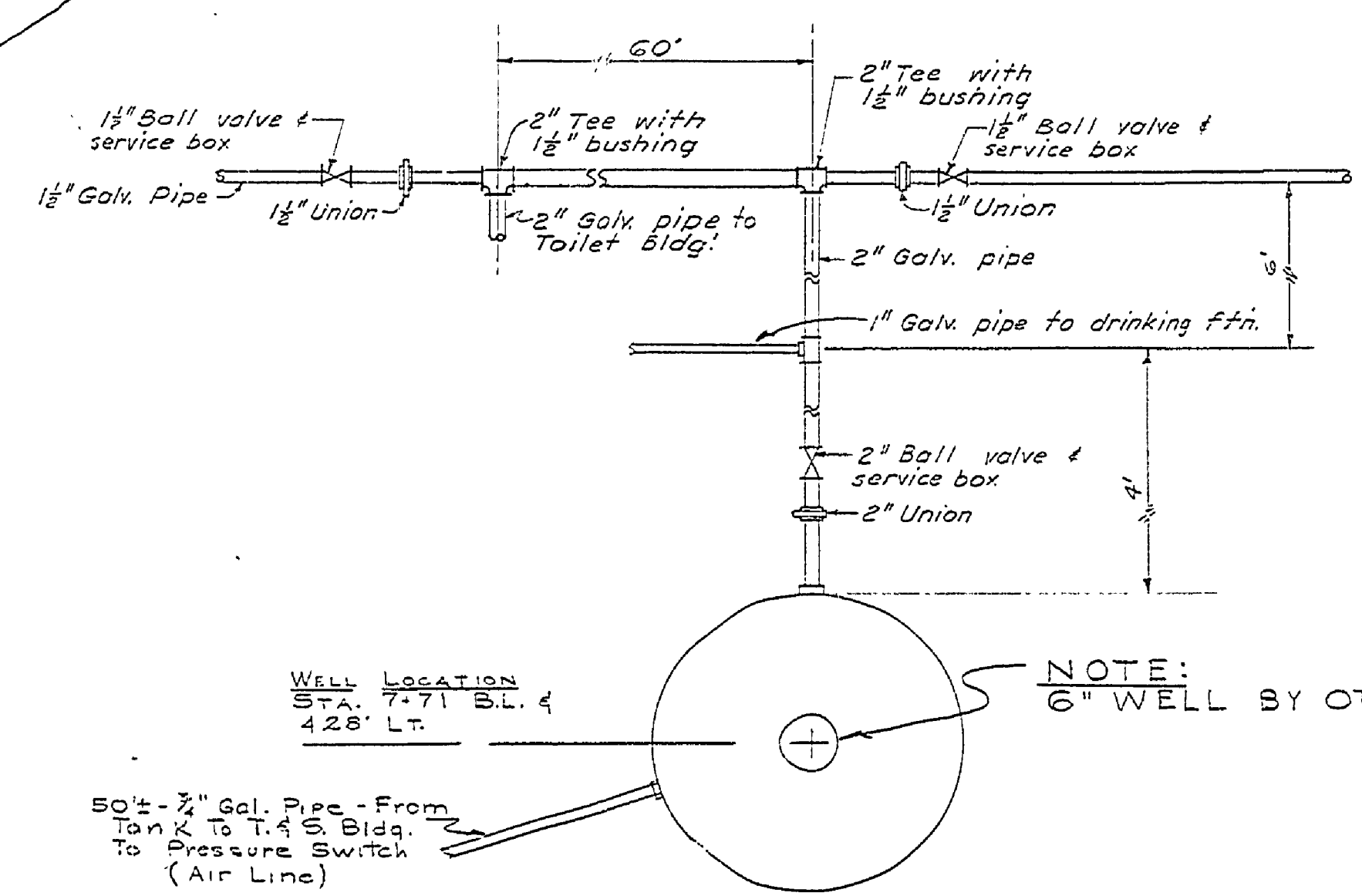


| DESIGNED BY | DRAWN BY | CHECKED BY | DATE | REVIEWED | DATE | APPROVED | DATE | NO. | DATE | BY | REVISIONS |
|-------------|----------|------------|------|---------------|------|----------|------|-----|------|--------|-----------------------------|
| | R.P.R. | | 4-65 | ARCHITECTURAL | | | | 1 | 1-66 | R.H.D. | Moved Location of T.S. Bldg |
| | | | | ENGINEERING | | | | 2 | | | |
| | | | | LANDSCAPE | | | | 3 | | | |
| | | | | | | | | 4 | | | |
| | | | | | | | | 5 | | | |
| | | | | | | | | 6 | | | |



PLAN
SCALE 1"=50'



DETAIL A
NOT TO SCALE

- NOTES:
1. ALL WATER LINES SHALL HAVE A MINIMUM OF 4'-6" COVER.
 2. SEE SHEET 6 FOR STANDARD DRINKING FOUNTAIN DETAILS.
 3. SERVICE BOX W/STATIONARY ROD & GUIDE RING IS T.C.I.V. #A-337 OR CLOW #F-4615. BRONZE BALL VALVE IS CLAYTON MARK & CO. #795.

Sheet #6 is Standard Drinking Fountain Plan SE 1/2

MICHIGAN
DEPARTMENT OF CONSERVATION
PARKS AND RECREATION DIVISION

HIGGINS LAKE STATE PARK (N.S.)
WATER DISTRIBUTION SYSTEM

SHEET
NO. 5
OF 13

PLAN NO.
E-102