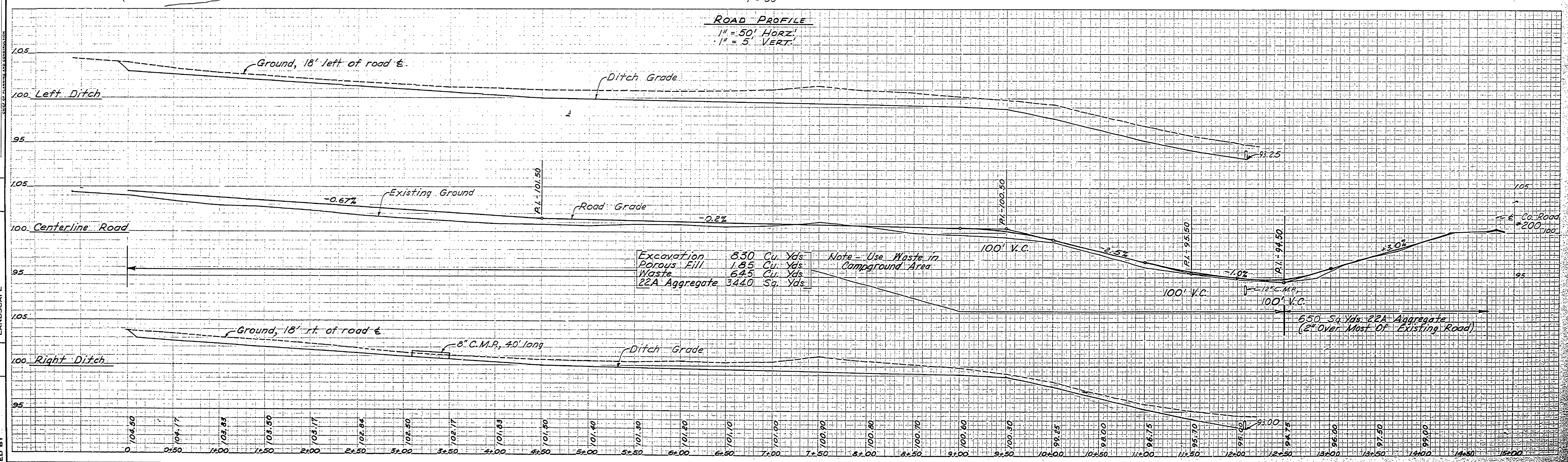
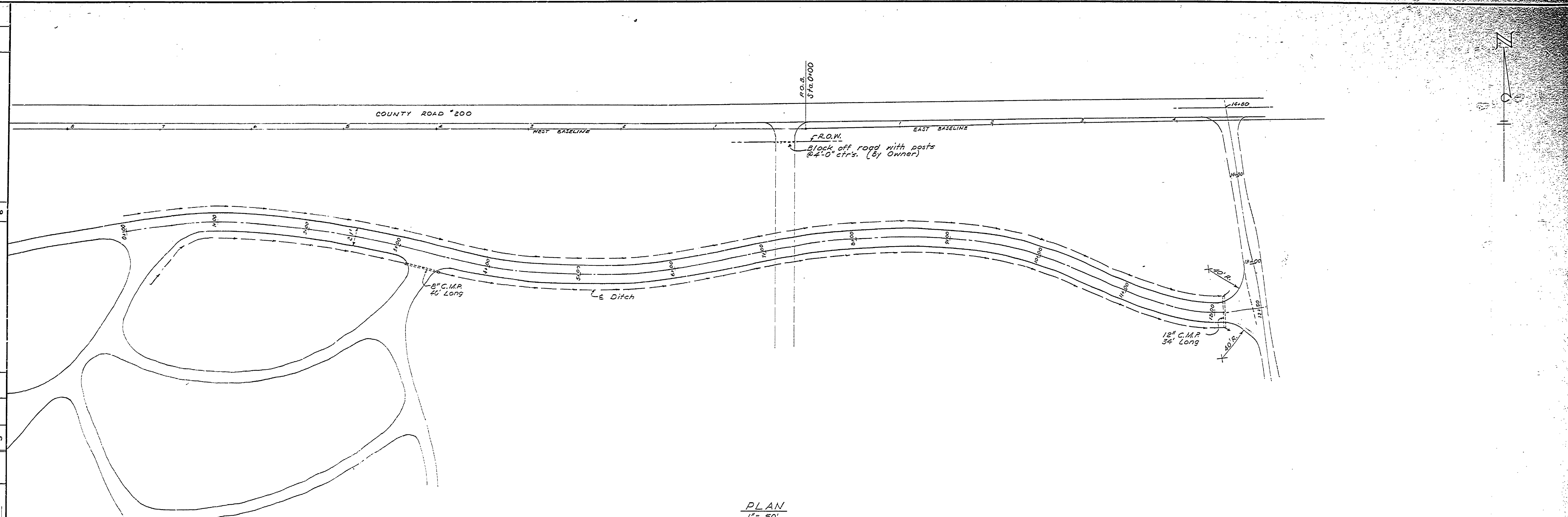


DESIGNED BY	POVET	DATE	June '65	REVIEWED	DATE	APPROVED	DATE	NO.	DATE	BY	REVISIONS	DATE	BY
DRAWN BY	COTE	June '65	ARCHITECTURAL	June '65	ENGINEERING			1			4		
CHECKED BY			LANDSCAPE					2			5		
								3			6		



MICHIGAN  
DEPARTMENT OF CONSERVATION  
PARKS AND RECREATION DIVISION

HIGGINS LAKE STATE PARK  
NORTH SHORE CAMPGROUND  
ENTRANCE ROAD

SHEET  
NO. 11  
OF 13

PLAN NO.  
E-102