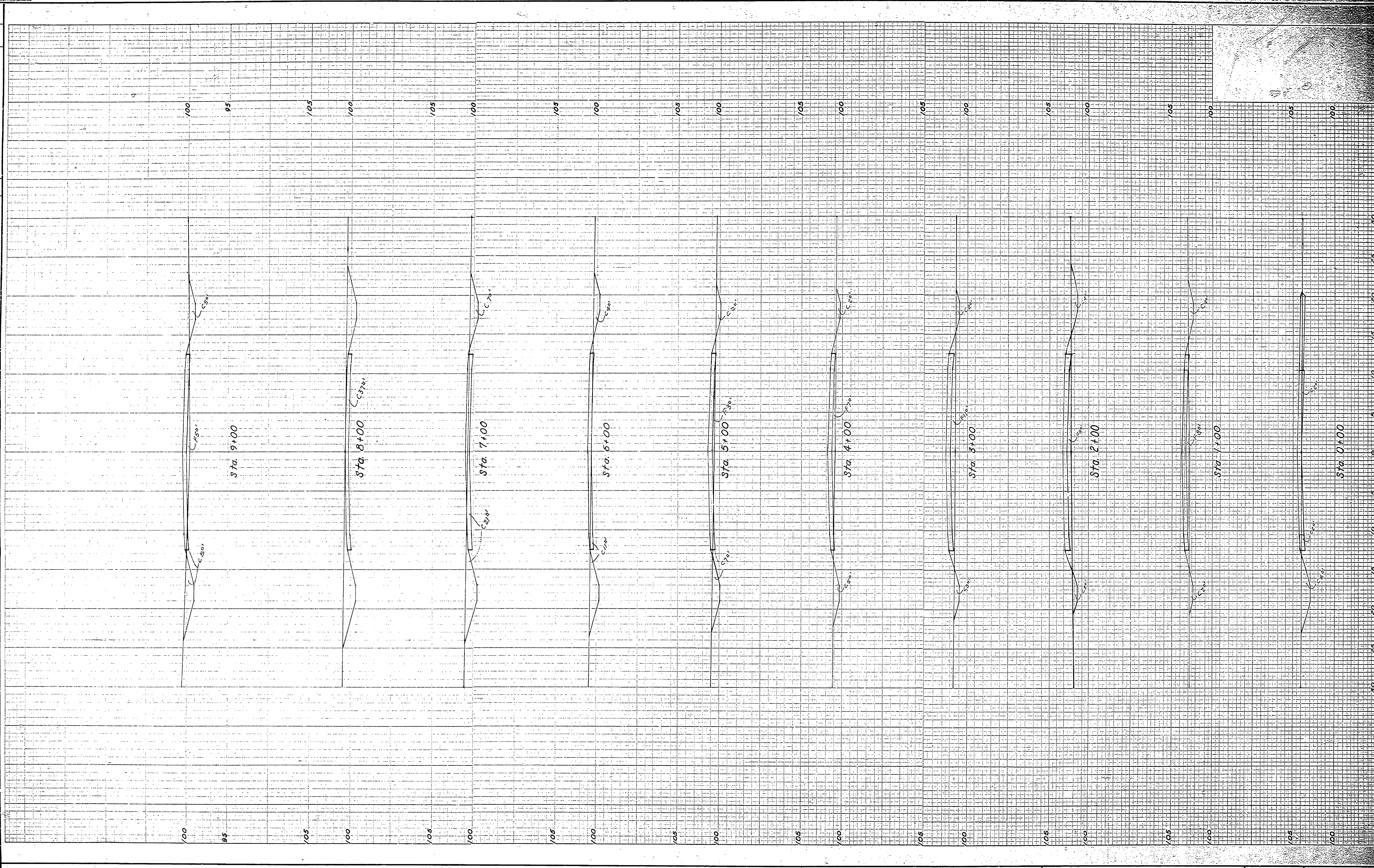


DESIGNED BY	DATE	REVIEWED	DATE	APPROVED	DATE	NO.	DATE	BY	REVISIONS	DATE	BY
DRAWN BY: COTZ	6-85	ARCHITECTURAL		CITY OF BIRMINGHAM		1			4		
CHECKED BY:		ENGINEERING		STATE OF MICHIGAN		2			5		
		LANDSCAPE		CITY OF ANN ARBOR		3			6		



MICHIGAN
DEPARTMENT OF CONSERVATION
PARKS AND RECREATION DIVISION

HIGGINS LAKE STATE PARK
NORTH SHORE CAMPGROUND
ENTRANCE ROAD CROSS SECTIONS

SHEET
NO. 12
OF 13

PLAN NO.
E-102