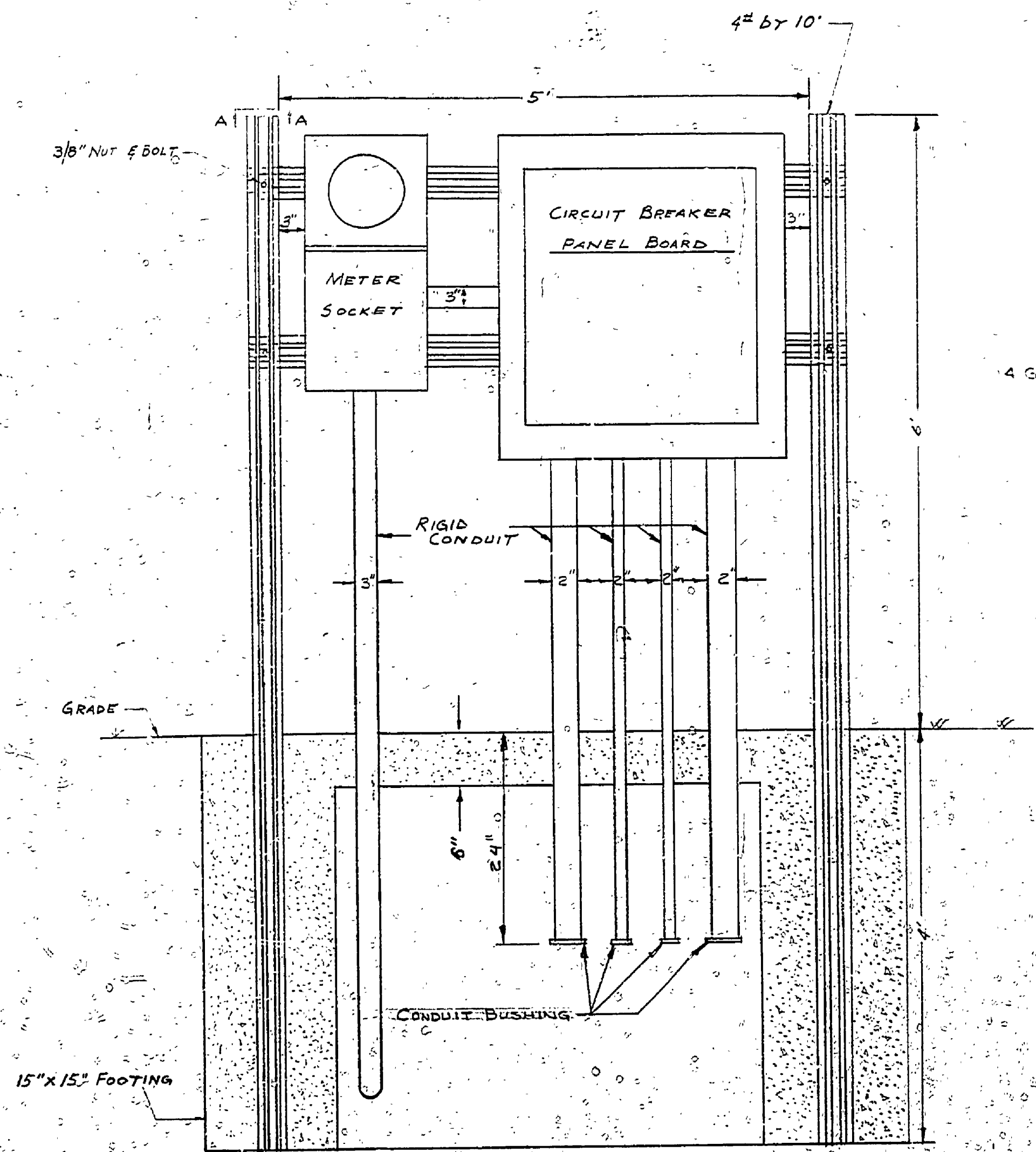
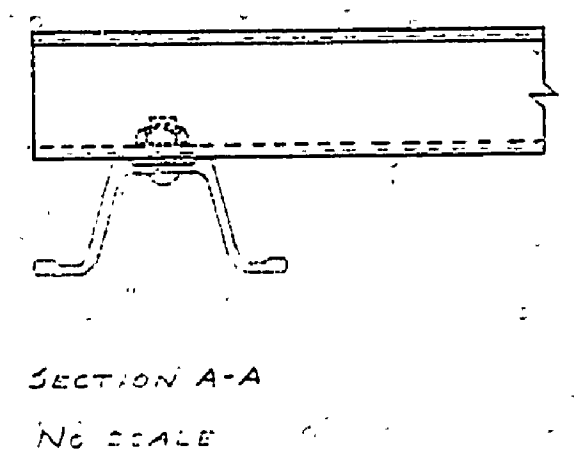


5057

6357

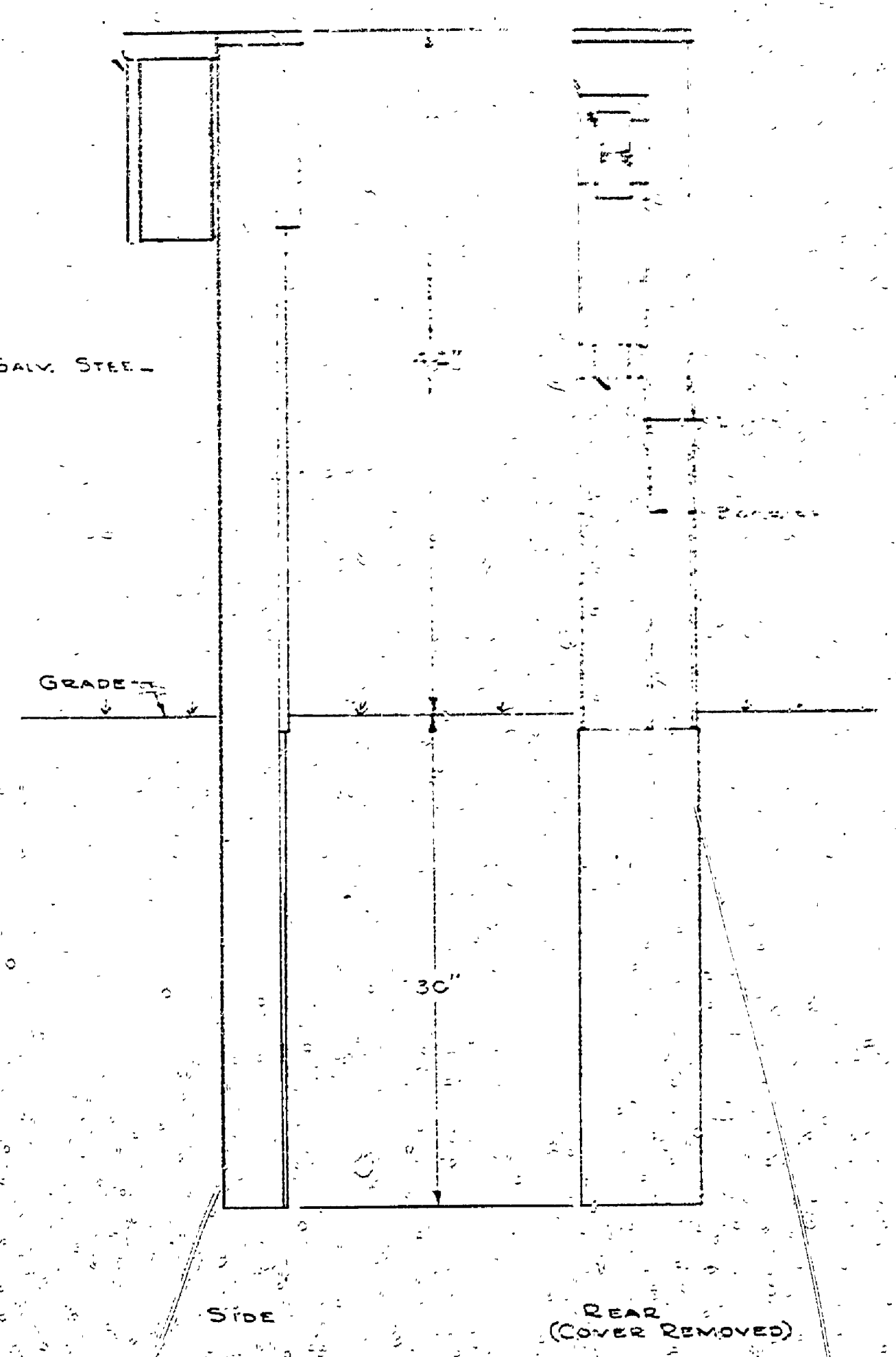


ENTRANCE RACK
With Meter Socket & Circuit Breaker Panel Board
NOTE: Ground electrical system at distribution panelboard to nearest buried water pipe.

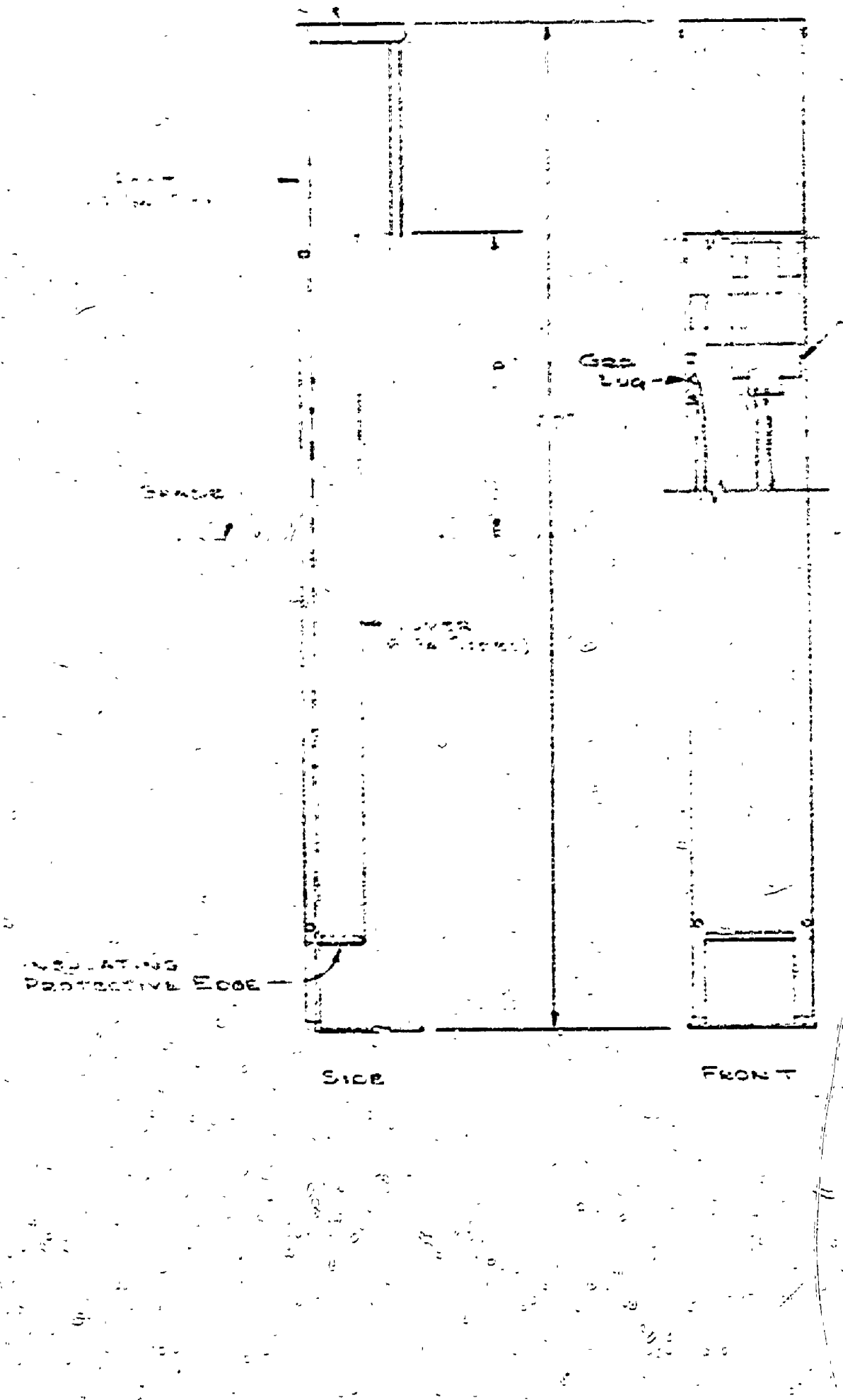


Circuit Breaker Schedule

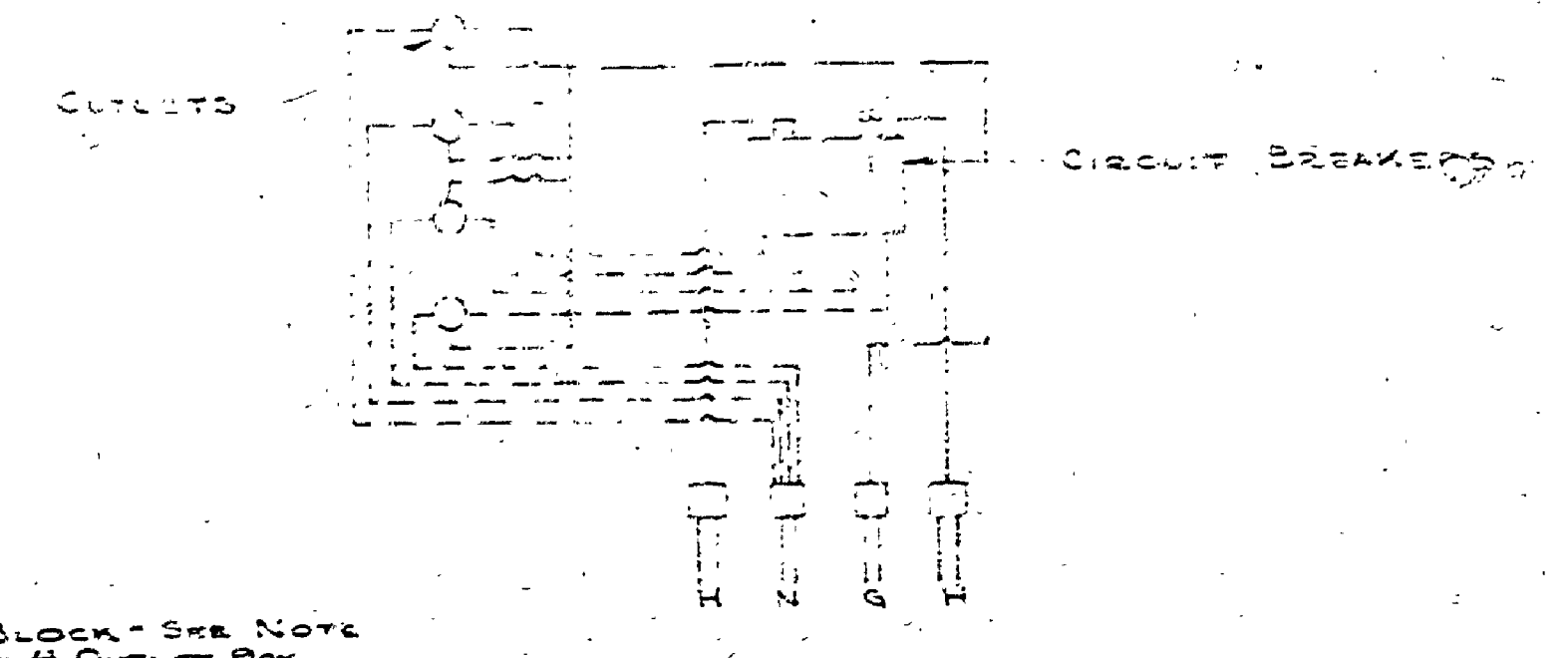
T & S. Bldg	60 AMP.
BRANCH #1	70 AMP.
BRANCH #2	100 AMP.
BRANCH #3	100 AMP.
BRANCH #4	90 AMP.



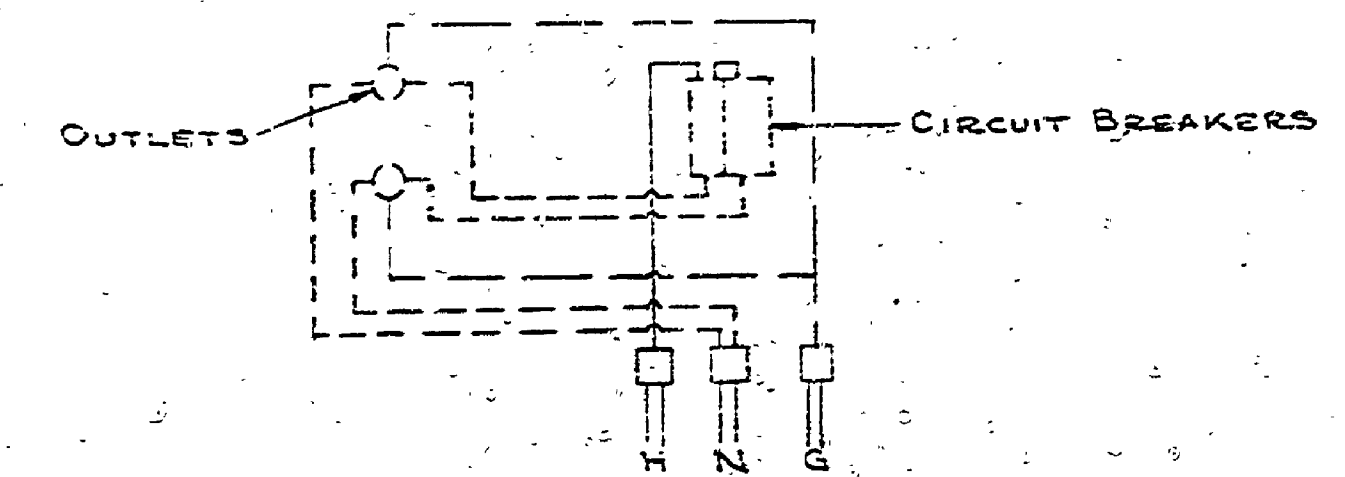
JUNCTION POST
With Outlet Box & Branch Circuit Protection



MOUNTING POST
With Outlet Box

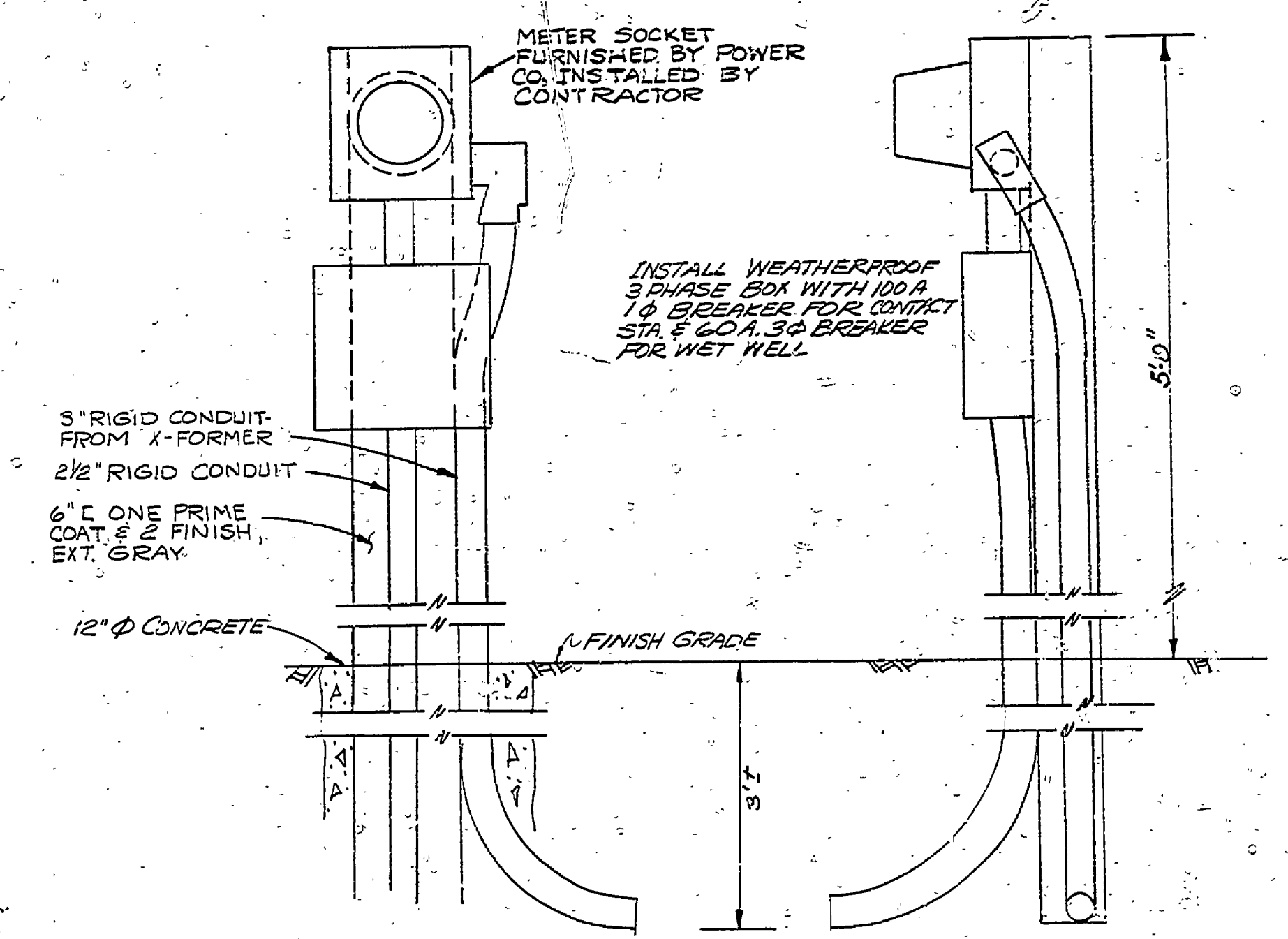


WIRING DIAGRAM
FOR 4 OUTLET BOXES



WIRING DIAGRAM
FOR 2 OUTLET BOX

NOTE: THESE POSTS ARE DESIGNED TO PERMIT LOOPING OF CABLE FROM ONE UNIT TO THE NEXT. SPLICING TO BE DONE IN POST. LUGS ARE PROVIDED TO RECEIVE UP TO #4/0 WIRE. GROUND #2 BARE TO EQUIPMENT GROUND PROVIDED ON POST.



METER POST AT CONTACT STATION

SURVEYED BY	DRAWN BY J. YEPA & R. HARRY	AUG. '66	NO.	DATE	BY	REVISIONS	NO.	DATE	BY	REVISIONS	MICHIGAN DEPARTMENT OF CONSERVATION	STANDARD PLAN UNDERGROUND SECONDARY FOR CAMPGROUND	SHEET NO. OF	NORTH HIGGINS LAKE STATE PARK
			1.	4-15-68	J.Y.	WIRING DIA. REV. TERMINAL BLOCK ADDED.	3.			FOR PROJECT NO. 0108				
DESIGNED BY W. J. PAVET	AUG. '66	CHECKED BY	DATE	2.	6-70	R.H.M.	ADDED METER POST DETAIL.	4.						SE-161-A