

BM#20 EL 92.63
 PK. NUTS TAG IN THE S.E.
 SIDE OF A 24" W. PINE, 29'
 LT. STA. 14+28, CAMPGROUND
 ROAD

STA. EQ.
 STA. 14+19.22 Bk =
 STA. 13+12.46, 41'
 LINE LENGTH = 46.76

BM#21 EL 96.29
 20" LT. STA. 23+52, PK.
 NUTS TAG IN THE N.W.
 FOOT OF A 14" OAK

BM#1 EL 99.99
 A PK. SPRUCE TAG IN A
 18" OAK ON THE S.E. SIDE
 OF THE WEST END OF THE
 TRAINING SCHOOL

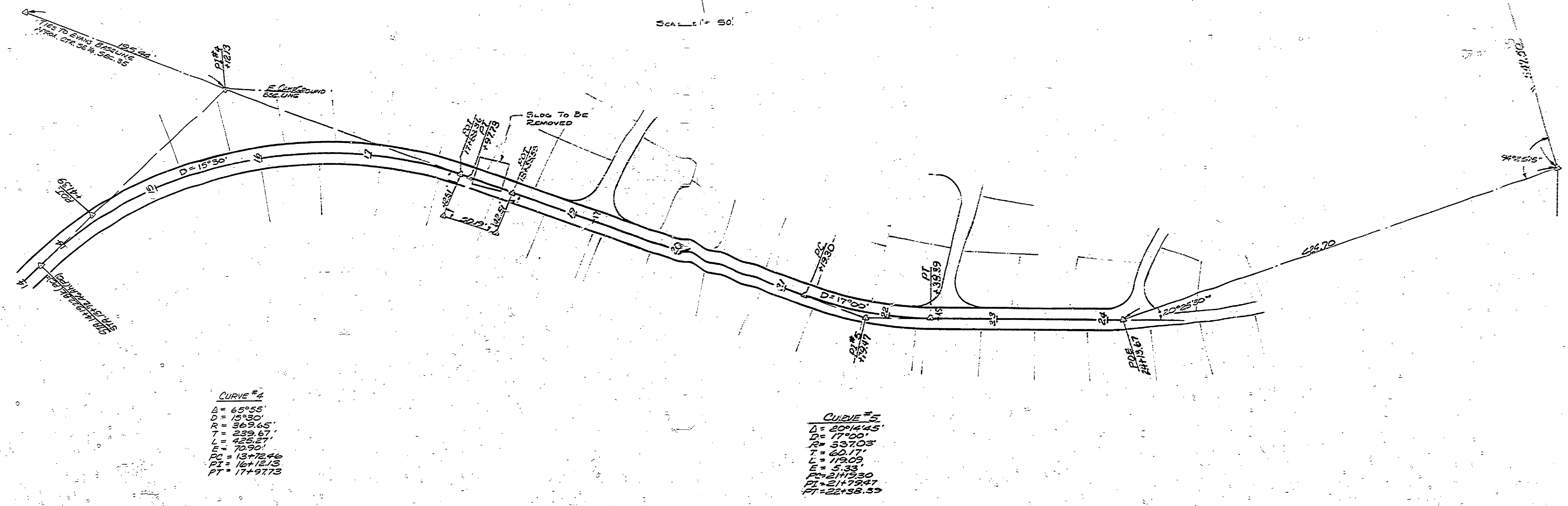
SCALE 1" = 50'

WITNESSES TO PT #2
 STA. 16+12.13, 4" PIPE
 N50°W - 17.12 - 5" J. PINE
 N32°E - 36.95 - 10" OAK
 S 10°W - 13.01 - 5 SERVICE
 RD. BENEATH POWER LINE

WITNESSES TO PT #5
 STA. 21+70.47, 3/4" PIPE
 S45°W - 26.87 - 16" B. SPRUCE
 N74°E - 116.16 - 5" W. COE BARK

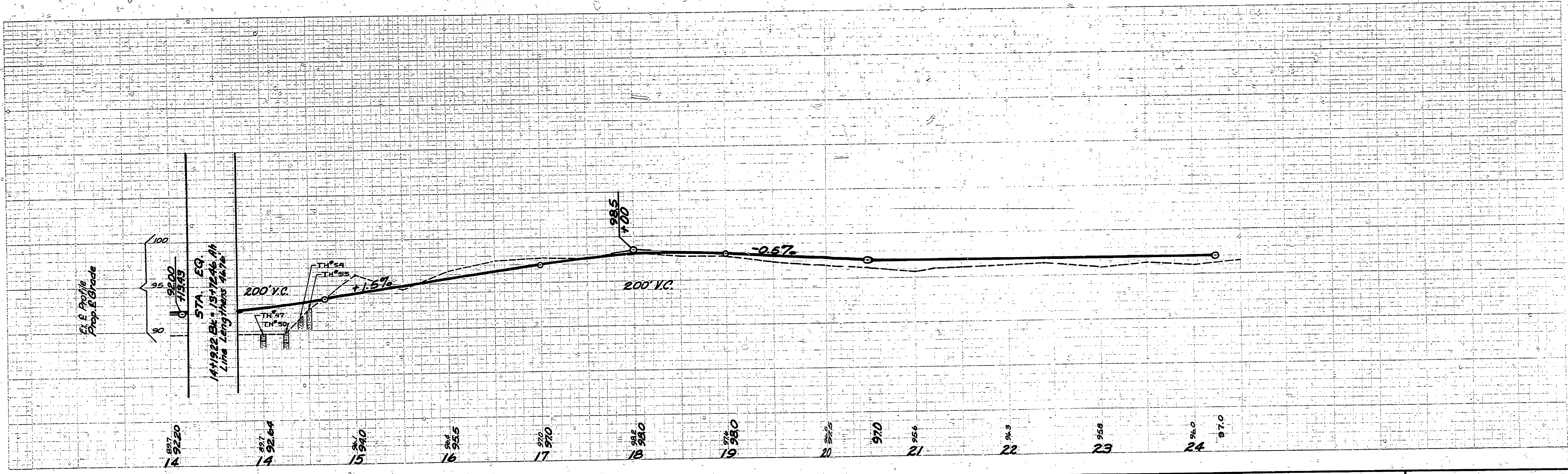
WITNESSES TO P.O.E.
 STA. 14+11.39, 5/8" PIPE
 N48°W - 25.65 - 34" W. PINE (BM 20)
 N08°E - 55.59 - 13" OAK

WITNESSES TO P.O.E.
 STA. 24+13.67, 3/4" PIPE
 S29°W - 30.56 - 4" CHERRY
 N37°W - 66.66 - 1" OAK (BM#21)
 S61°E - 37.11 - N.W. COR. SHED



CURVE #2
 Δ = 65°55'
 D = 15°30'
 R = 569.65'
 T = 239.67'
 L = 425.87'
 E = 70.90'
 P.C. = 13+72.46
 P.T. = 14+19.22
 P.T. = 17+97.73

CURVE #5
 Δ = 204°45'
 D = 17°00'
 R = 537.03'
 T = 60.17'
 L = 119.09'
 E = 5.33'
 P.C. = 21+53.0
 P.T. = 21+79.47
 P.T. = 22+158.59



SURVEYED BY V. McCANN	7-69	DRAWN BY C.E. MASSEY	7-69	NO.	DATE	BY	REVISIONS	NO.	DATE	BY	REVISIONS	MICHIGAN DEPARTMENT OF CONSERVATION	ENTRANCE ROAD	SHEET NO. OF	NORTH HIGGINS LAKE STATE PARK
DESIGNED BY H. MERRILL	7-69	CHECKED BY	DATE	1.				3.						FOR PROJECT NO. 0107	SHEET 3 OF 5 PLAN NO. E-105