

WITNESSES

STA. 10+00 POB PIPE
 4" NORWAY N 76°33'E 18.48'
 16" OAK N 08°E 60.47' (BM 118)

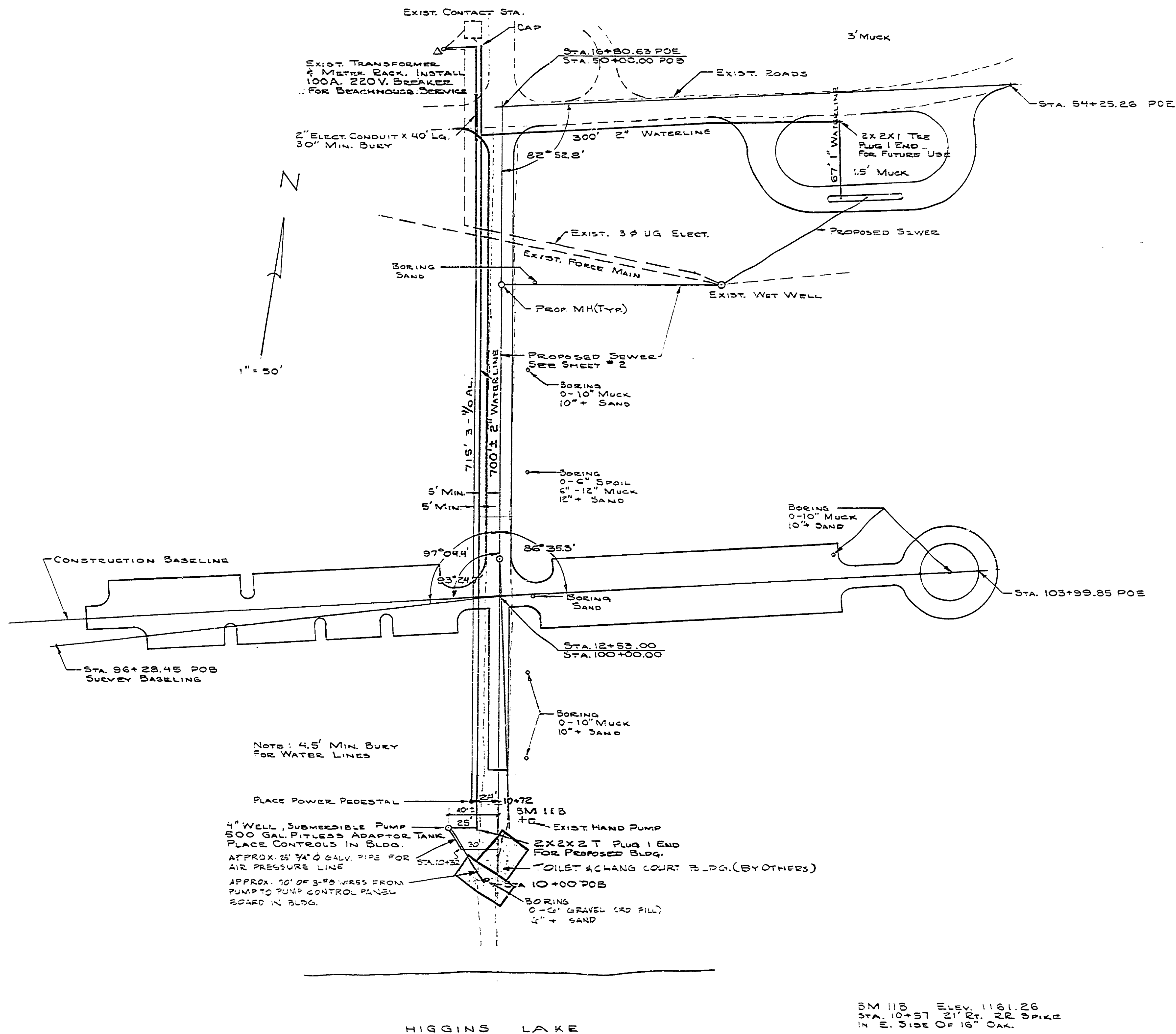
STA. 12+53.00 & STA. 100+00.00 PIPE
 6" SPRUCE N 41°E 18.58'
 9" OAK N 39°W 33.53'
 7" CEDAR S 35°W 22.80'

STA. 16+80.63 POE & STA. 50+00.00 POB P.K.
 11" CEDAR S 40°E 33.96'
 19" PINE S 29°W 31.64'

STA. 54+25.26 POE PK
 10" SPRUCE S 31°E 32.53'
 5" CEDAR S 39°W 42.93'

STA. 96+28.45 POB PIPE
 11" BIRCH S 08°E 4.00'
 17" MAPLE N 71°W 25.00'

STA. 103+99.85 POE PIPE
 14" CEDAR S 21°E 8.26'
 12" CEDAR S 85°W 6.30'



NOTE: 4.5' MIN. BURY FOR WATER LINES

PLACE POWER PEDESTAL

4" WELL, SUBMERSIBLE PUMP
 500 GAL. FITLESS ADAPTOR TANK
 PLACE CONTIGUOUS IN BLDG.
 APPROX. 2 1/2" GALV. PIPE FOR AIR PRESSURE LINE
 APPROX. 10' OF 3/8" WIRE FROM PUMP TO PUMP CONTROL PANEL BOARD IN BLDG.

EXIST. HAND PUMP

2X2X2 T PLUG 1 END FOR PROPOSED BLDG.

TOILET & CHANG COURT BLDG. (BY OTHERS)

10+00 POB

BORING 0-2" GRAVEL (RD FILL) 2' + SAND

BM 118 ELEV. 1161.26
 STA. 10+51 21' 12" 22" SPIKE IN E. SIDE OF 16" OAK.

SURVEYED BY	DRAWN BY J.Y.P.M.A.	10-74	NO. 1	DATE	BY	REVISIONS	NO. 1	DATE	BY	REVISIONS	MICHIGAN DEPARTMENT OF NATURAL RESOURCES	WATER & ELECTRICAL DISTRIBUTION SYSTEMS SHEET TITLE	NORTH HIGGINS LAKE STATE PARK AREA OR PARK	PROJECT NO. 34-1578
DESIGNED BY R. H. MERRILL	CHECKED BY	10-74	NO. 2	DATE	BY	REVISIONS	NO. 3	DATE	BY	REVISIONS				