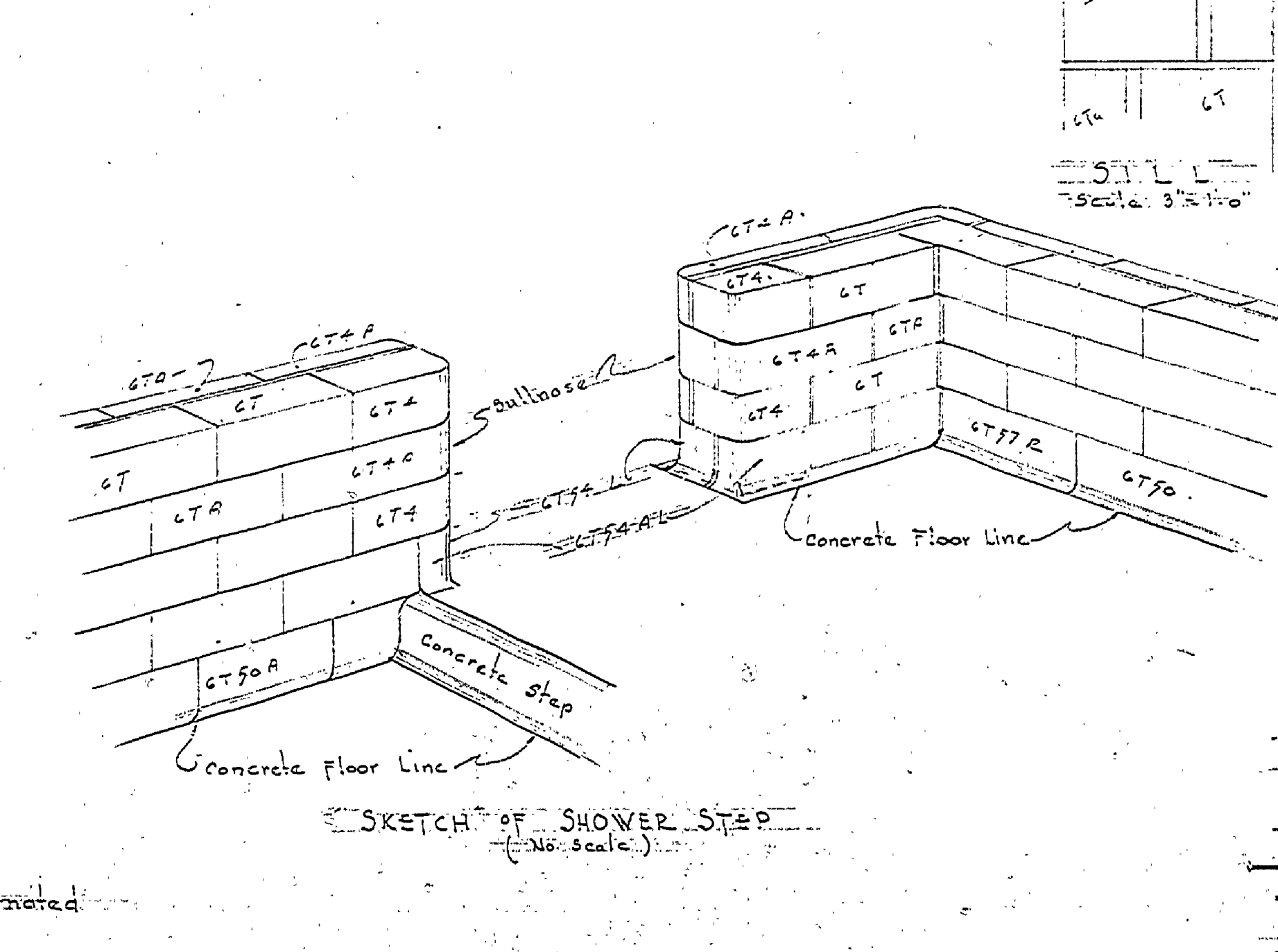
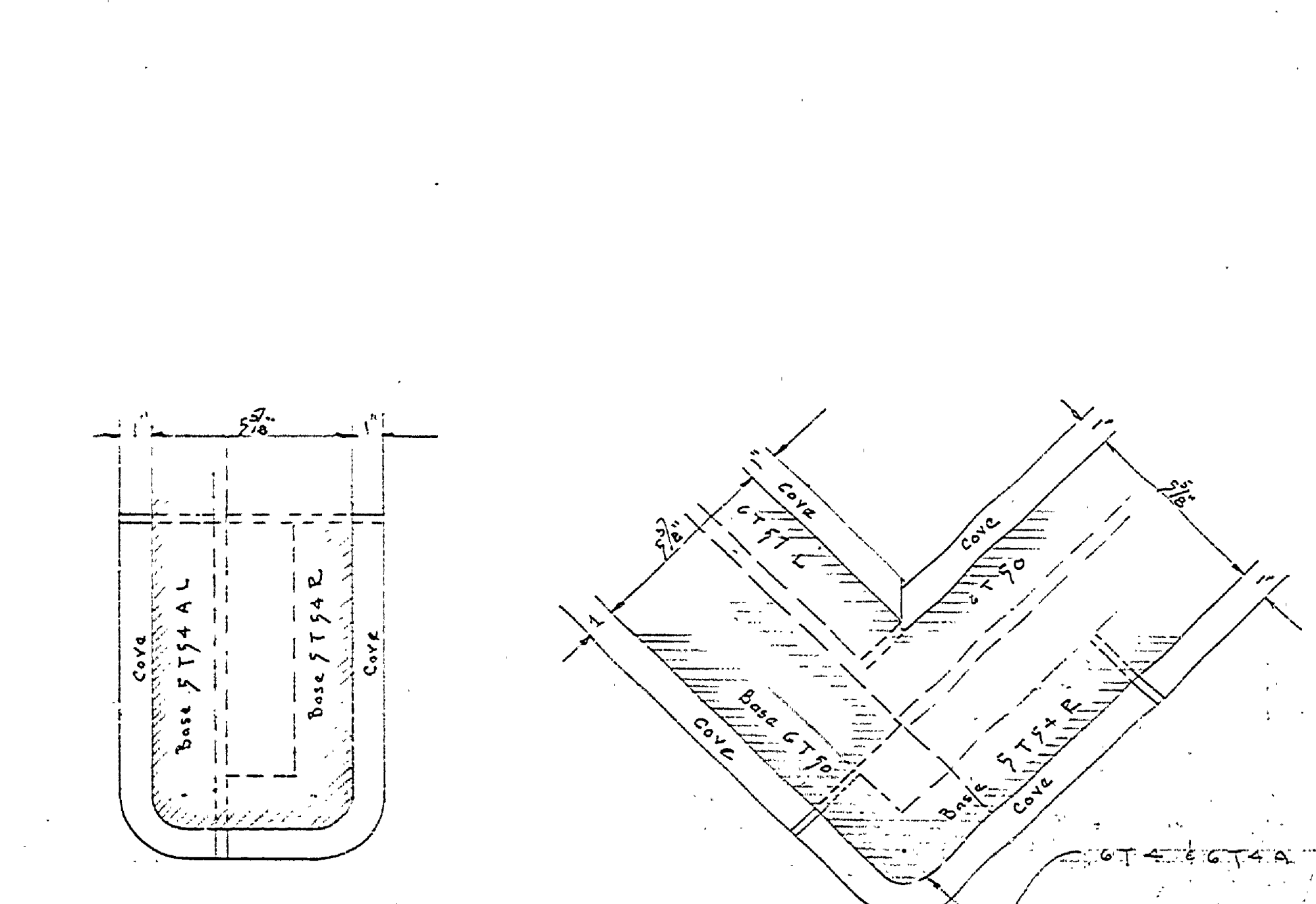
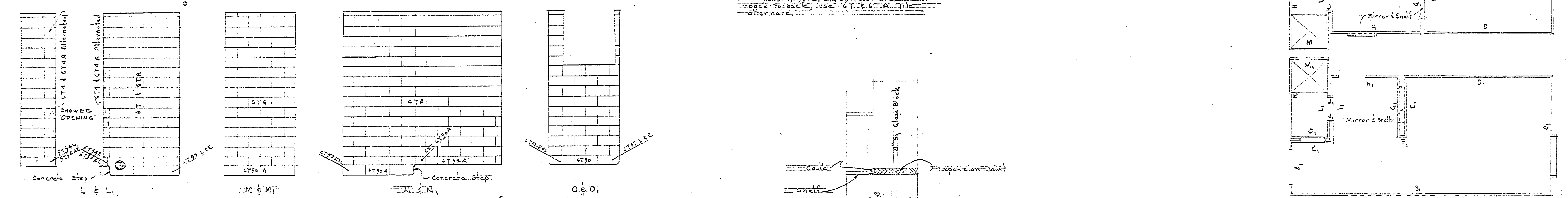
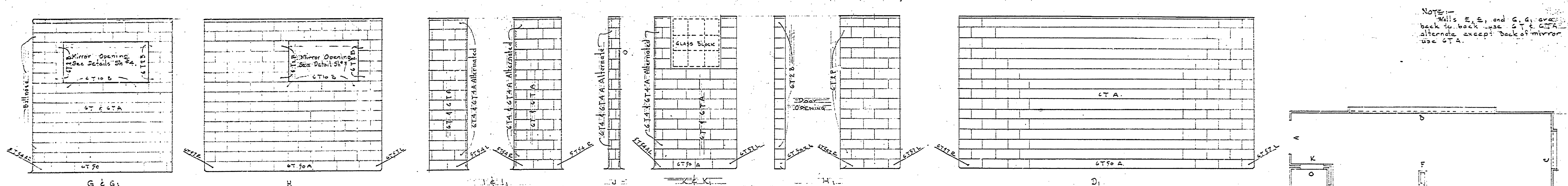
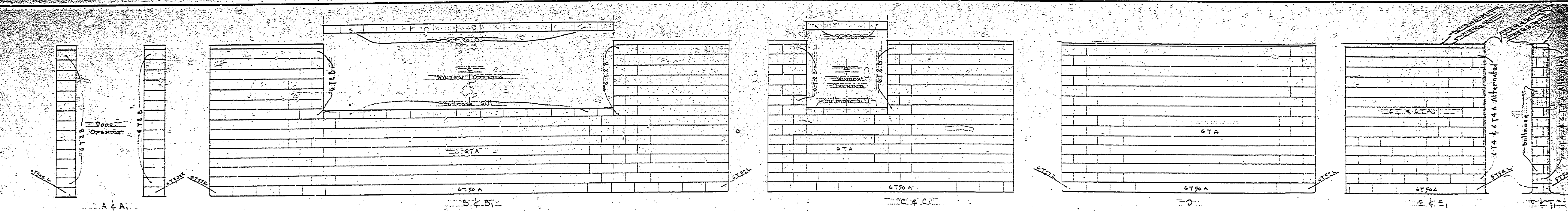
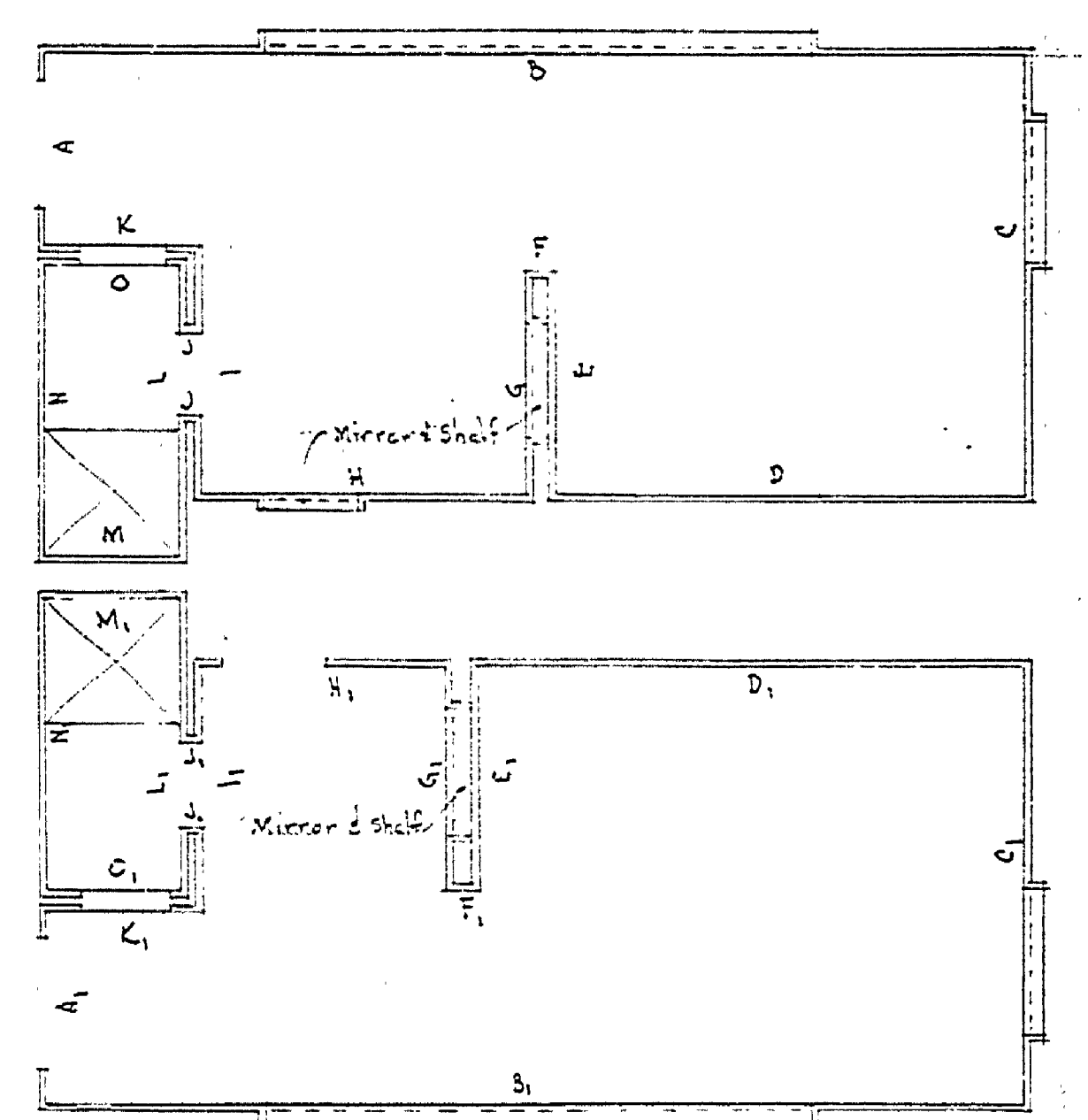


DRAWN BY	CHECKED BY	DATE	REVIEWED BY SECTIONS			APPROVED BY	NO.	DATE	BY	REVISIONS		
			ARCHITECTURAL	ENGINEERING	LANDSCAPE					NO.	DATE	BY
J.R.	J.R.	7-17-52	J.R.	J.R.	J.R.	J.C. Madson	1	8-21-54	MAA	4		
						Assistant Chief in Charge	2			5		
						OF DESIGN	3			6		



Notes:
Walls in L, M, N, O, P, Q, R, S, T, U, V, W, X, Y, Z use C.T. & C.T.A. tile alternate.

NOTE:
Walls E, E, and G, G, are back to back use C.T. & C.T.A. alternate except back of mirror use C.T.A.



- ELECTRICAL SYMBOLS**
- ⊗ Ceiling Light outlet
 - ⊞ Recessed ceiling light outlet
 - ⊗ Lamp holder with pull switch
 - ⊗ Wall bracket light outlet
 - ⊗ Fluorescent Lamp holder
 - ⊗ Duplex convenience outlet
 - ⊗ Special outlet
 - ⊗ Single switch
 - ⊗ Panel Box

