

REVISIONS	DATE	BY
1		
2		
3		
4		
5		
6		

NO.	DATE	BY
1		
2		
3		

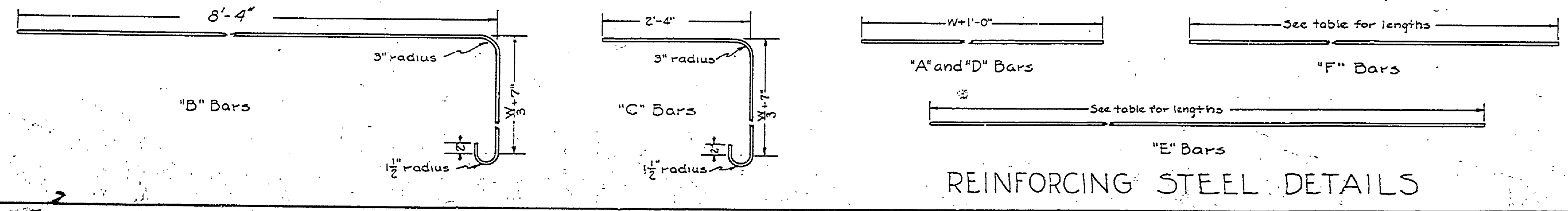
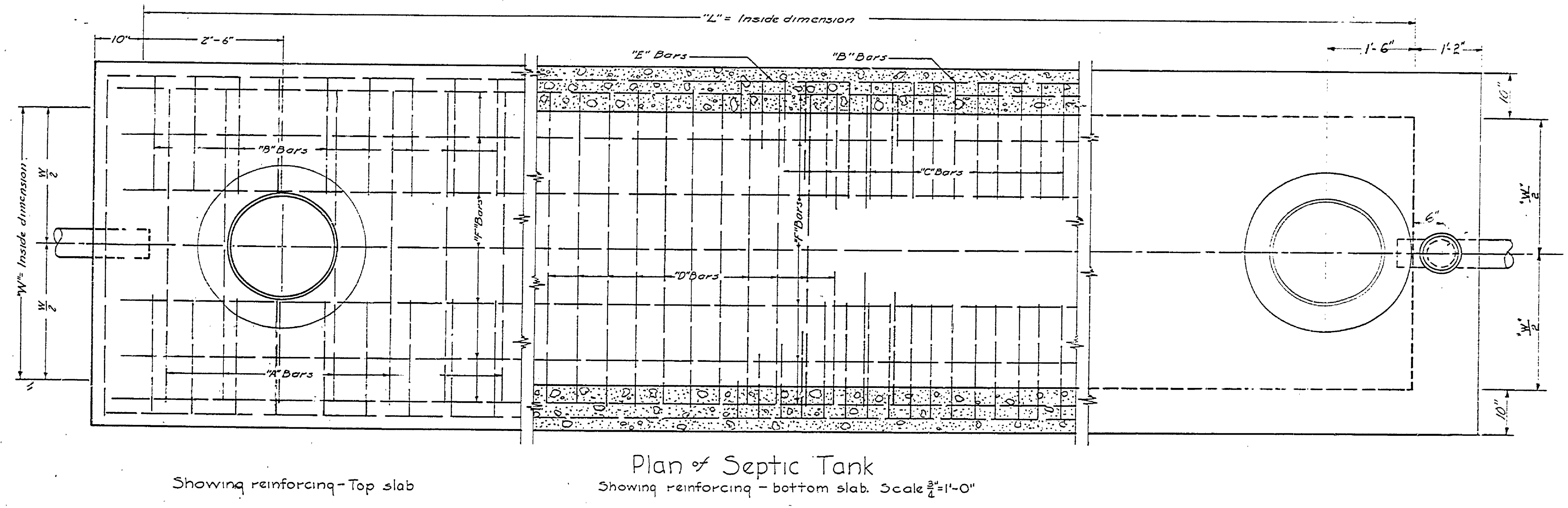
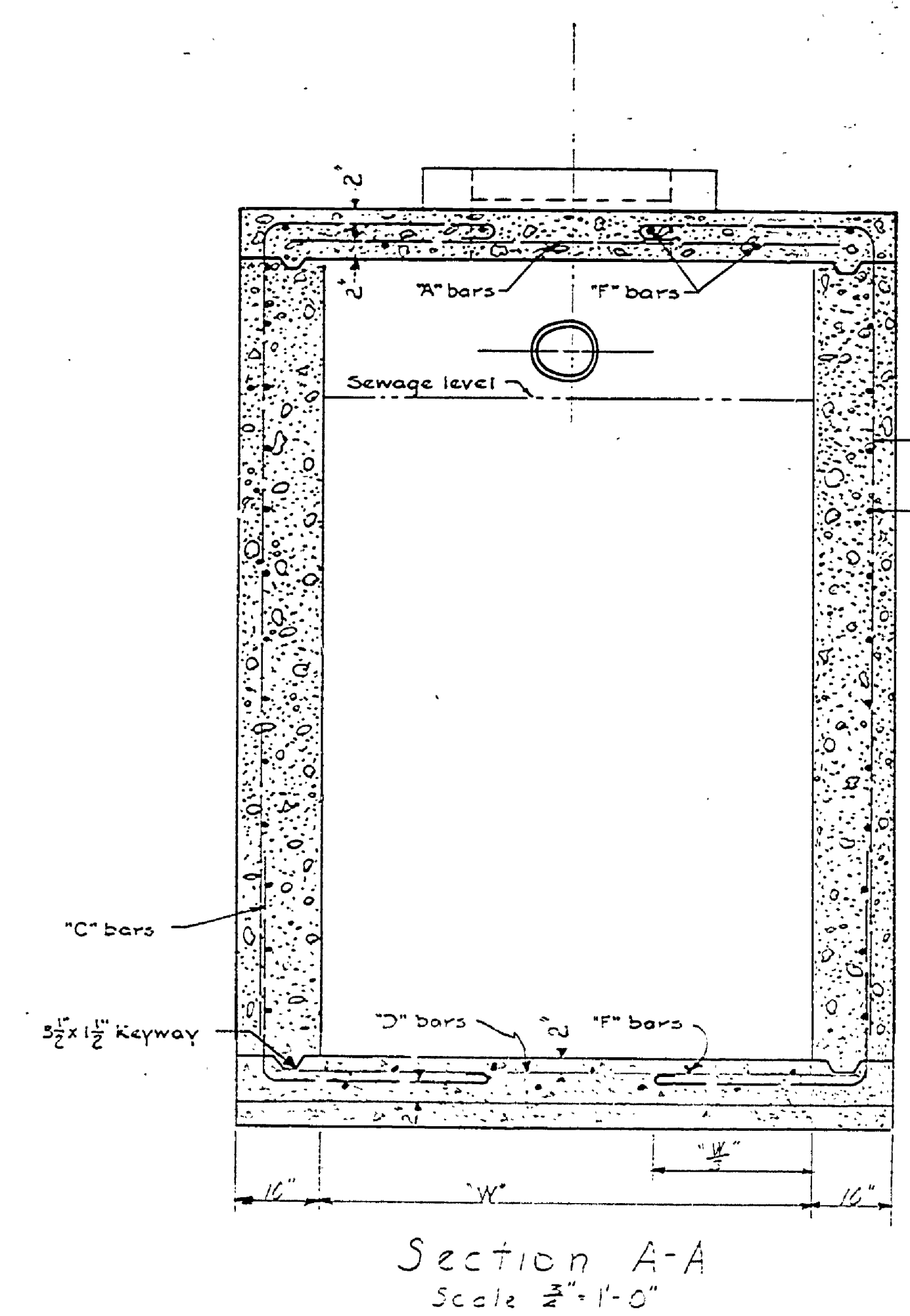
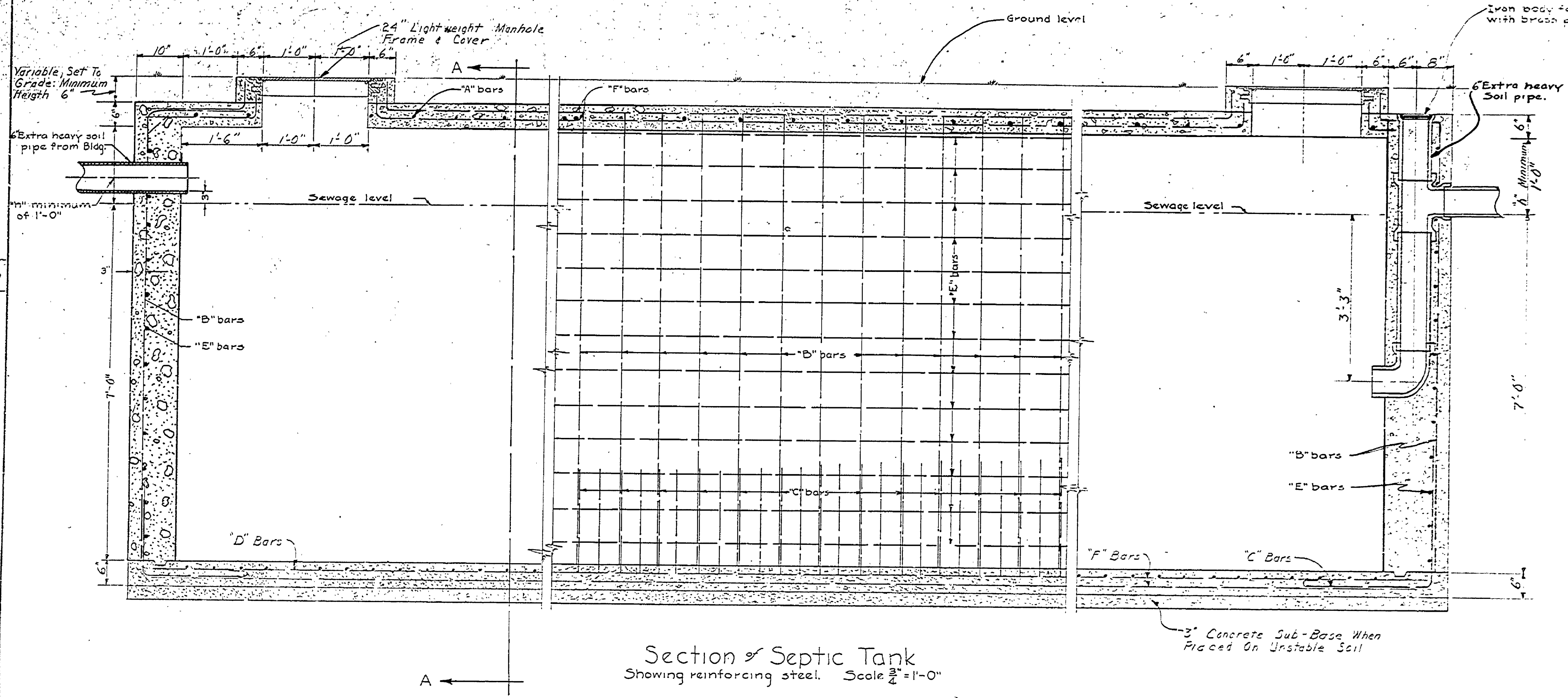
REVIEWED BY SECTIONS	DATE	APPROVED BY
ARCHITECTURAL	7/17/53	
ENGINEERING		
LANDSCAPE		

CHECKED BY	DATE
F. J. P.	3-1-76

ASSISTANT CHIEF IN CHARGE	DATE



Length	Width	Cap. in gals.	Gals. per lin. ft.	"A" bars	"B" bars	"C" bars	"D" bars	"E" bars	"F" bars
15'-0" to 18'-0"	3'-0"	2360 to 2850	157.1	1/2" @ 12" c.	1/2" @ 12" c.	3/8" @ 6" c.	3/8" @ 7" c.	3/8" @ 8" c.	3/8" @ 12" c.
16'-3" to 19'-6"	3'-3"	2760 to 3320	170.2	1/2" @ 12" c.	1/2" @ 12" c.	3/8" @ 6" c.	3/8" @ 7" c.	3/8" @ 8" c.	3/8" @ 12" c.
17'-6" to 21'-0"	3'-6"	3200 to 3850	182.3	1/2" @ 12" c.	1/2" @ 12" c.	3/8" @ 6" c.	3/8" @ 7" c.	3/8" @ 8" c.	3/8" @ 12" c.
18'-9" to 22'-6"	3'-9"	3670 to 4410	194.4	1/2" @ 12" c.	1/2" @ 12" c.	3/8" @ 6" c.	3/8" @ 7" c.	3/8" @ 8" c.	3/8" @ 12" c.
20'-0" to 24'-0"	4'-0"	4190 to 5020	209.4	1/2" @ 12" c.	1/2" @ 10" c.	3/8" @ 5" c.	3/8" @ 6" c.	3/8" @ 8" c.	3/8" @ 12" c.
21'-3" to 27'-6"	4'-3"	4730 to 5650	222.5	1/2" @ 12" c.	1/2" @ 10" c.	3/8" @ 5" c.	3/8" @ 6" c.	3/8" @ 8" c.	3/8" @ 12" c.
22'-6" to 27'-0"	4'-6"	5300 to 6360	235.9	1/2" @ 12" c.	1/2" @ 10" c.	3/8" @ 5" c.	3/8" @ 6" c.	3/8" @ 8" c.	3/8" @ 12" c.
25'-0" to 30'-0"	5'-0"	6560 to 7850	262.0	1/2" @ 12" c.	1/2" @ 9" c.	3/8" @ 4" c.	3/8" @ 5" c.	3/8" @ 8" c.	3/8" @ 12" c.
27'-6" to 33'-0"	5'-6"	7920 to 9500	288.0	1/2" @ 12" c.	1/2" @ 9" c.	3/8" @ 4" c.	3/8" @ 5" c.	3/8" @ 8" c.	3/8" @ 12" c.
30'-0" to 36'-0"	6'-0"	9400 to 11,300	314.2	1/2" @ 12" c.	1/2" @ 8" c.	3/8" @ 4" c.	3/8" @ 5" c.	3/8" @ 8" c.	3/8" @ 12" c.
32'-6" to 39'-0"	6'-6"	11,050 to 13,300	340.4	1/2" @ 12" c.	1/2" @ 8" c.	3/8" @ 4" c.	3/8" @ 5" c.	3/8" @ 8" c.	3/8" @ 12" c.
35'-0" to 42'-0"	7'-0"	12,800 to 15,380	366.7	1/2" @ 10" c.	1/2" @ 8" c.	3/8" @ 4" c.	3/8" @ 5" c.	3/8" @ 8" c.	3/8" @ 12" c.
37'-6" to 45'-0"	7'-6"	14,700 to 17,640	392.7	1/2" @ 10" c.	1/2" @ 8" c.	3/8" @ 4" c.	3/8" @ 5" c.	3/8" @ 8" c.	3/8" @ 12" c.
40'-0" to 48'-0"	8'-0"	16,750 to 20,050	418.9	1/2" @ 9" c.	1/2" @ 8" c.	3/8" @ 4" c.	3/8" @ 5" c.	3/8" @ 8" c.	3/8" @ 12" c.

**Concrete Specifications**  
 The concrete mix shall consist of 1 sack of cement, 2.25 cu. ft. of fine aggregate, 4.0 cu. ft. of coarse aggregate and enough water to make a workable mix, but not to exceed 6 gallons; or, 1 sack of cement, 5.0 cu. ft. of bank run gravel and enough water to make a workable mix but not to exceed 6 gallons.  
 The aggregate shall be clean, free from silt and clay; and shall all pass a 1" screen. Time of mixing shall be not less than 1 1/2 minutes.  
 The concrete shall be placed in the forms in horizontal layers, not over 2' thick and thoroughly spaded along the forms and around the reinforcing steel.

**Form Specifications**  
 Spacing of studding-use 3/4" sheathing 22" o.c.  
 Spacing of wales-use 2"x4" studding 30" o.c.  
 Spacing of ties-use double 2"x4" wales 30" o.c.  
 Tie at every stud.  
 Shoring shall be 4"x4" or double 2"x4".

Bend "B" bars at M.H. to extend up M.H. walls.  
 Bend "F" bars in top slab to conform with M.H.  
 "C" bars to extend across bottom slab and up sidewalls when W=3' or 3'-9".  
 Reinforcing to be the same for both ends and side walls.

MICHIGAN  
 DEPARTMENT OF CONSERVATION  
 PARKS AND RECREATION DIVISION

SEPTIC TANK  
 STANDARD PLAN

PROJECT NO.	BP-223-71C
SHEET NO.	2
OF	3
DATE	E 107