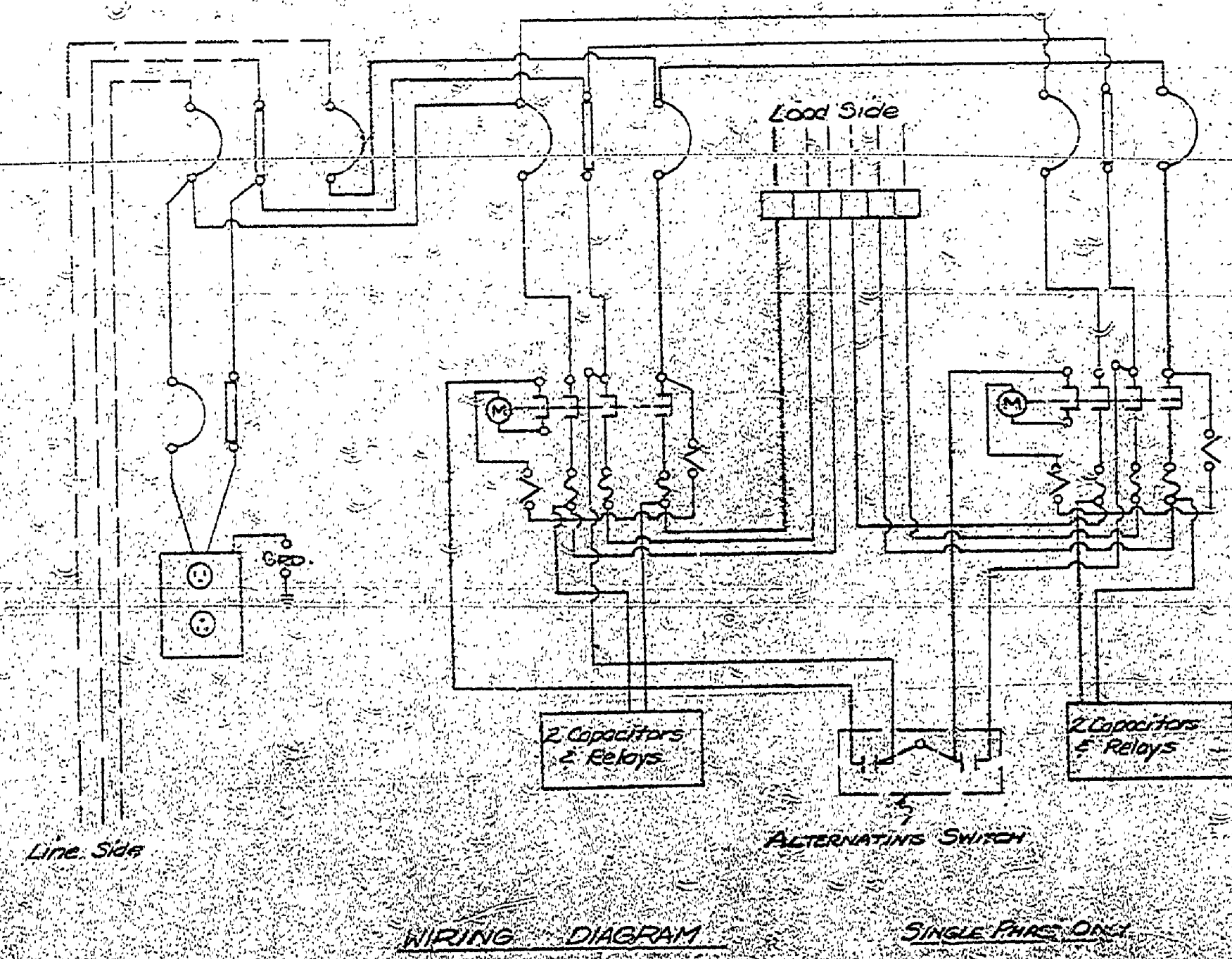


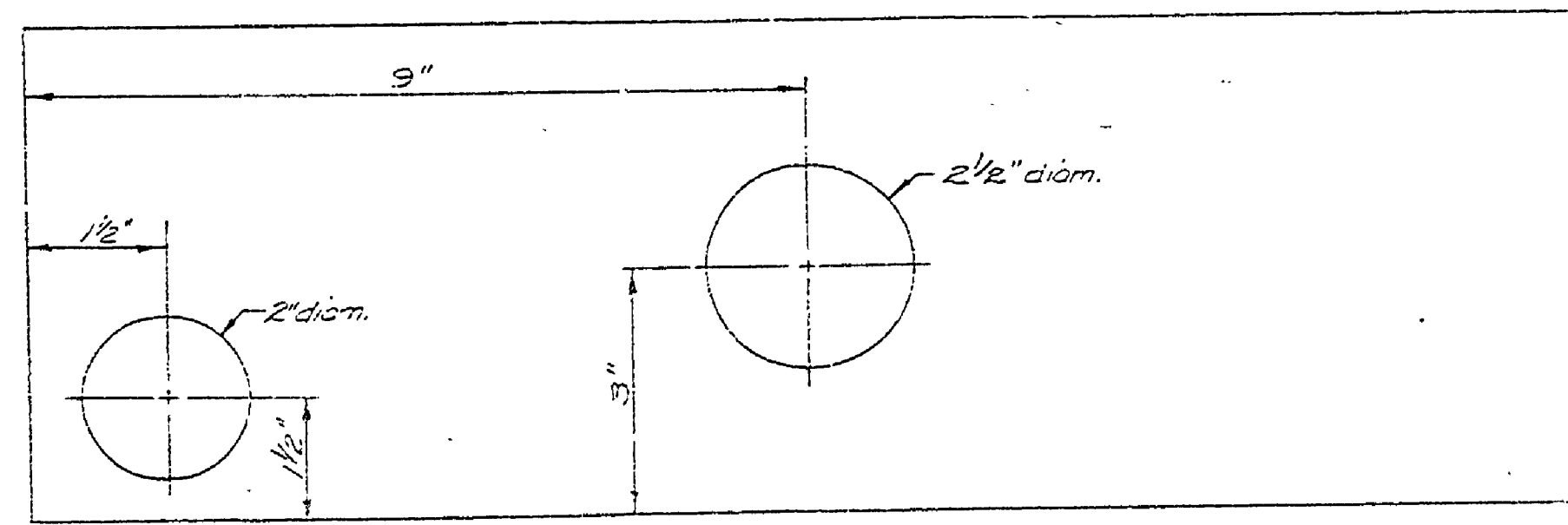
CONTROL CABINET WITH COVER REMOVED



WIRING DIAGRAM

SINGLE PHASE CIRCUIT

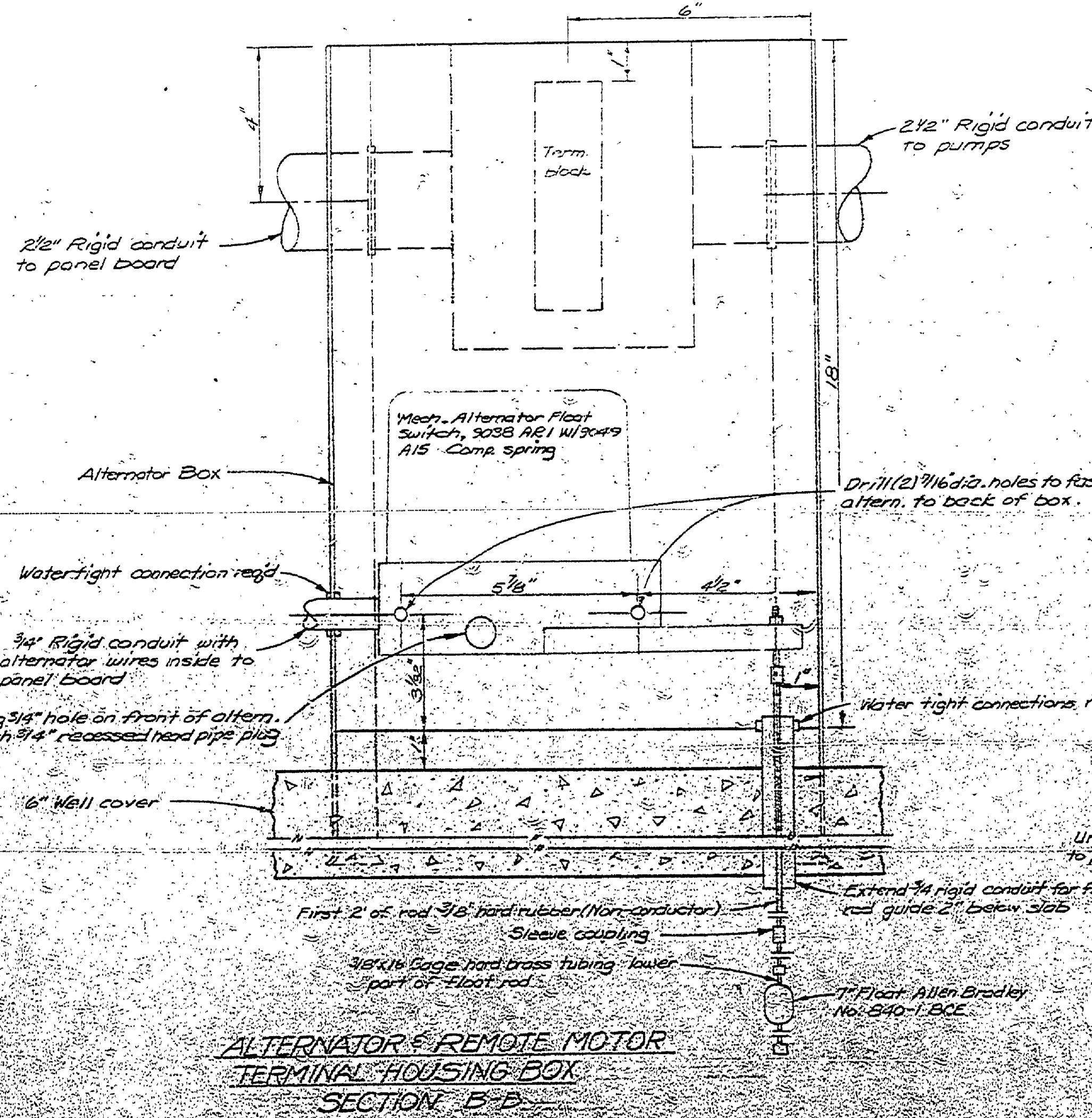
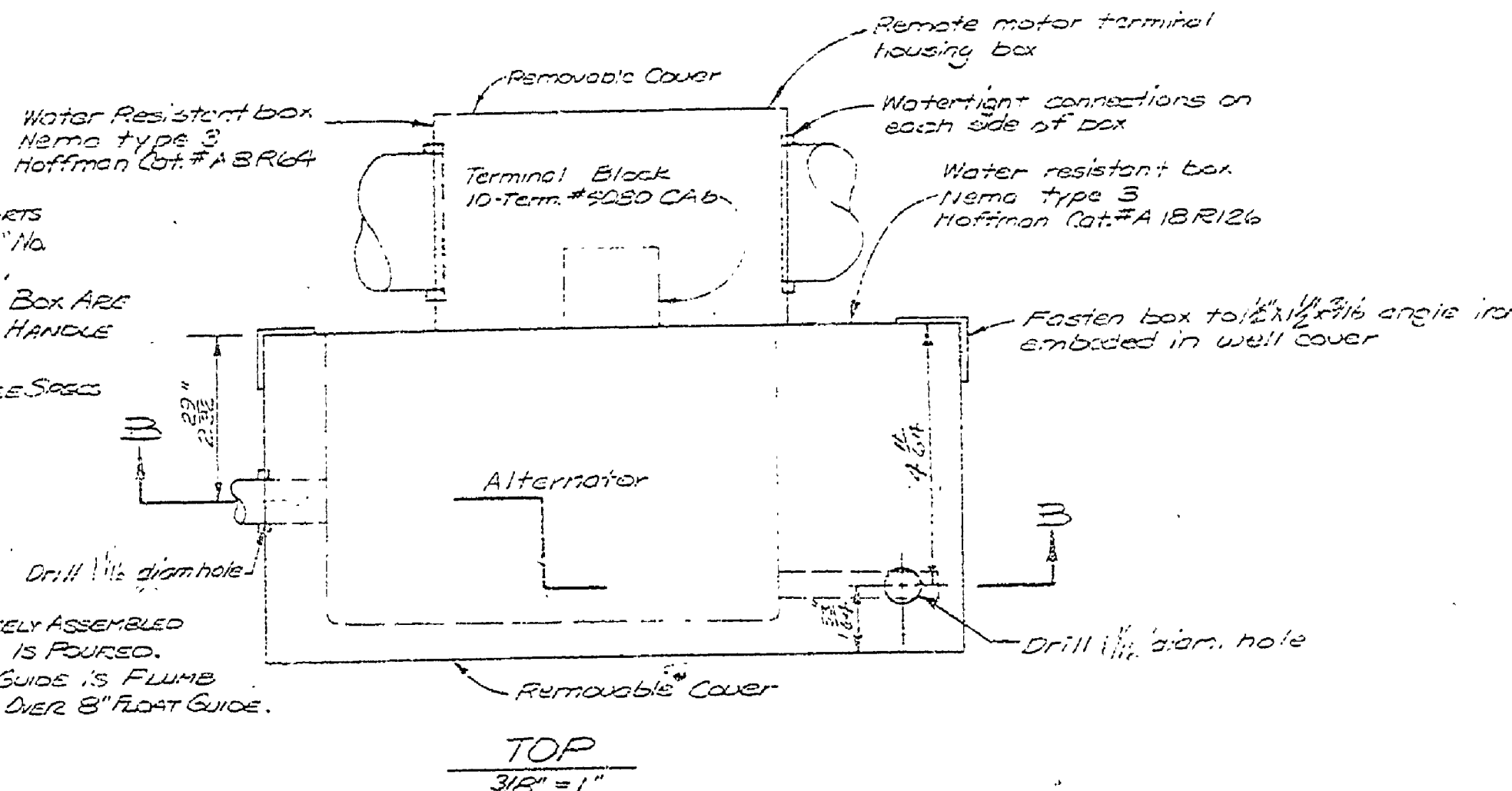
LEGEND
 - Factory Wired
 - Wired on Job



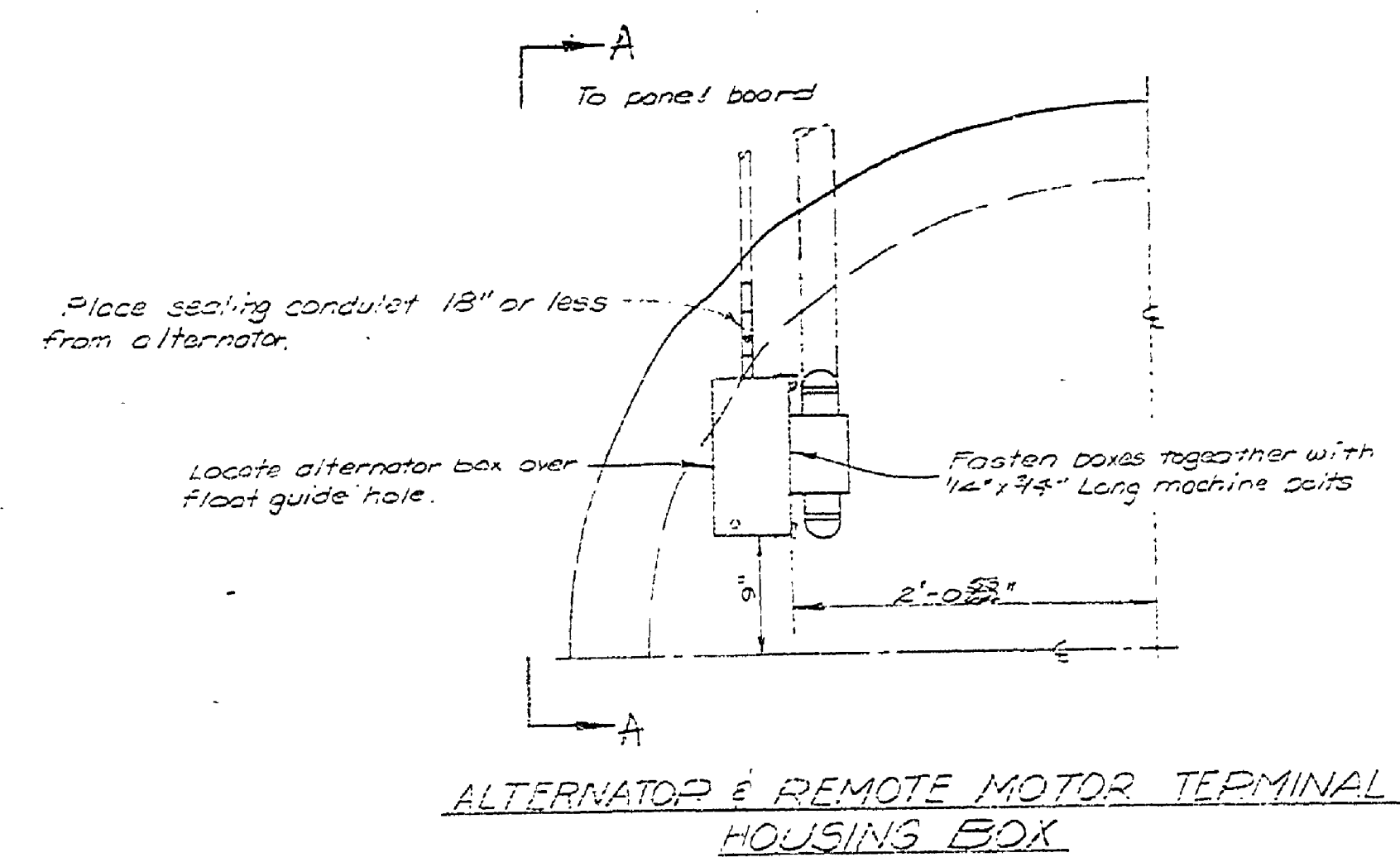
BOTTOM OF CONTROL CABINET
 No Scale

NOTES
 ALL NUMBERS SHOWN ON COMPONENT PARTS IN CONTROL CABINET ARE SQUARE "D" NO. SUBSTITUTES WILL NOT BE ACCEPTED. COMPONENT PARTS IN THIS CONTROL BOX ARE TO BE OF SUFFICIENT AMPERAGE TO HANDLE PUMP MOTORS FURNISHED. CABINET IS TO BE WEATHERPROOF (SEE SPEC. FOR COMPLETE DESCRIPTION).

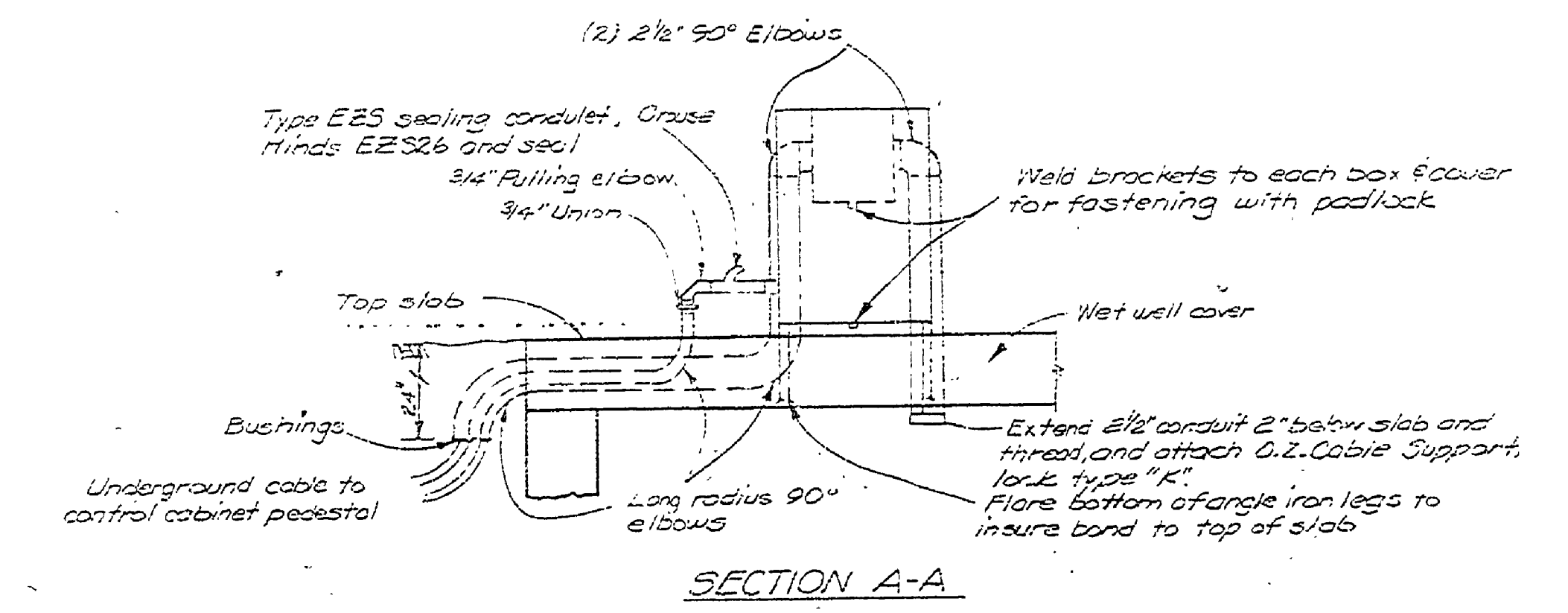
NOTES
 CONTROL PEDESTAL SHOULD BE COMPLETELY ASSEMBLED AND SET IN FORM BEFORE TOP OF SLAB IS POURED. BE SURE 3/4\"/>



ALTERNATOR & REMOTE MOTOR TERMINAL HOUSING BOX SECTION B-B

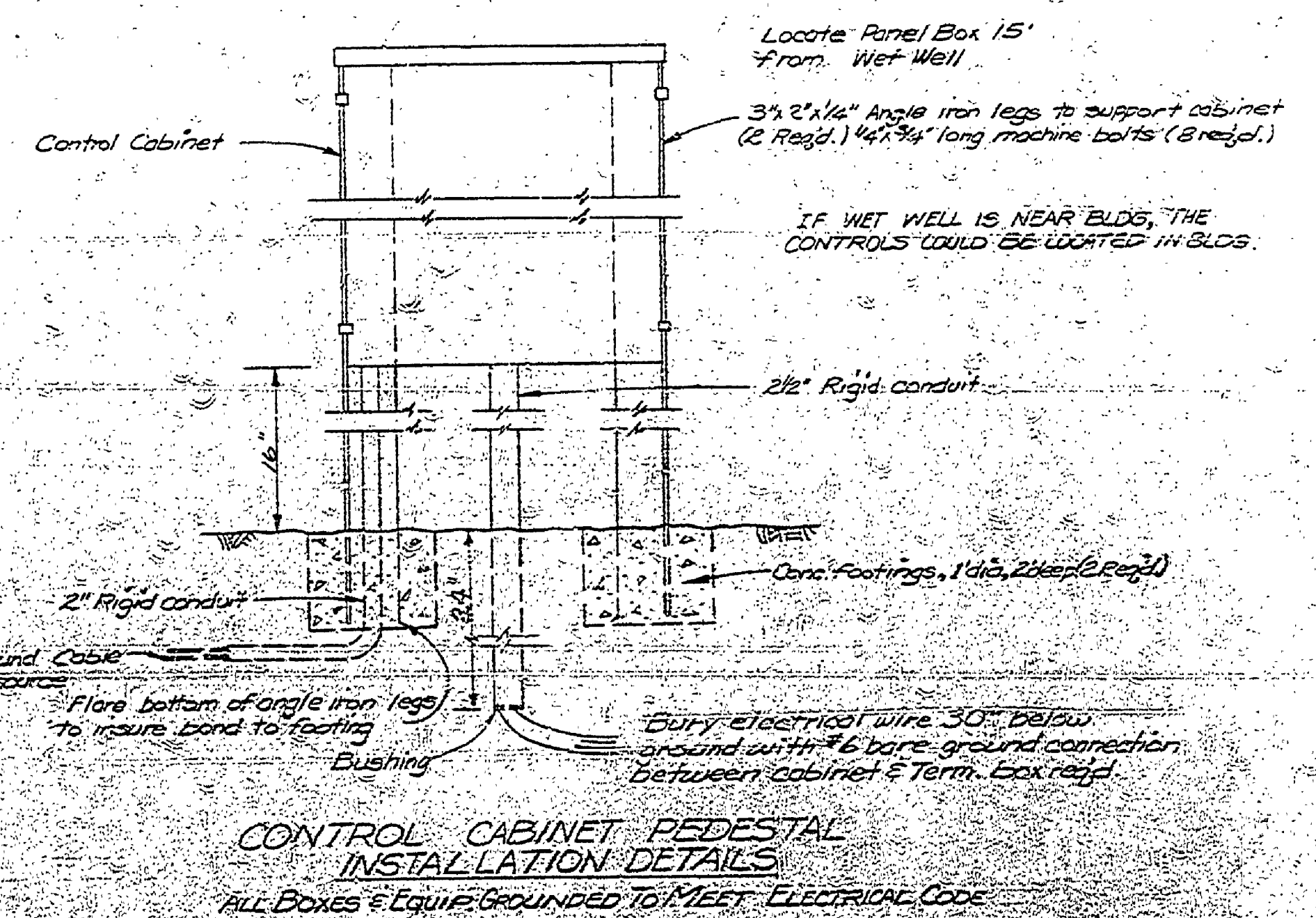


ALTERNATOR & REMOTE MOTOR TERMINAL HOUSING BOX



SECTION A-A

ALL ELECTRICAL CONNECTION AND MATERIAL TO CONFORM TO THE NATIONAL ELECTRICAL CODE.



CONTROL CABINET PEDESTAL INSTALLATION DETAILS

ALL BOXES & EQUIP. GROUNDED TO MEET ELECTRICAL CODE

DESIGNED BY	DATE	CHECKED BY	DATE	NO.	DATE	BY	REVISIONS	NO.	DATE	BY	REVISIONS	MICHIGAN DEPARTMENT OF NATURAL RESOURCES	220 VOLT 1 PHASE PUMP CONTROL PANEL	INDIAN LAKE SOUTH STATE PARK AREA OR PARK	PROJECT NO. 24-1237
				3-49	7-5-59	UNRM	Expansion Proofing Revision								