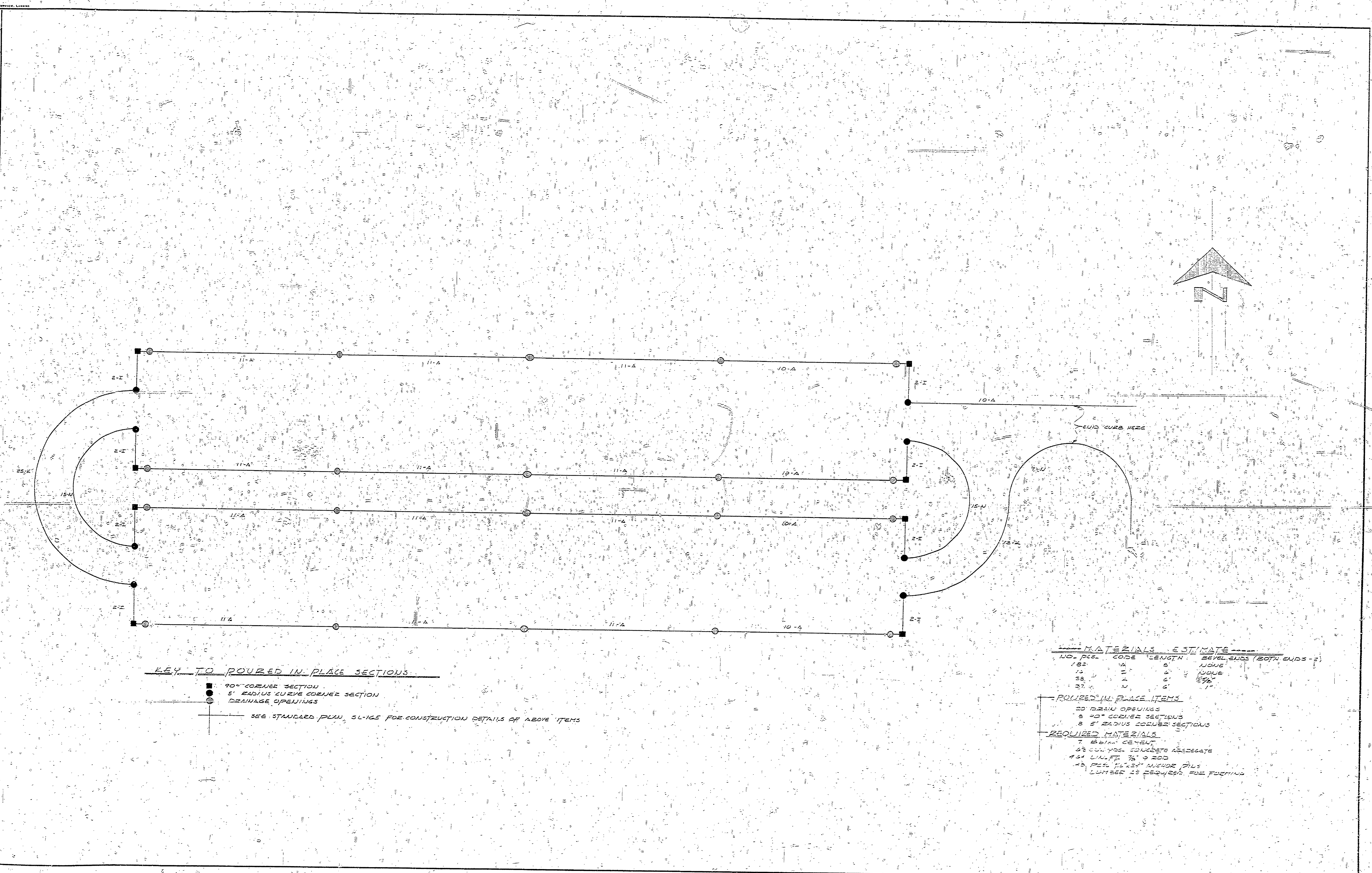


DESIGNED BY	DRAWN BY	CHECKED BY	DATE	REVIEWED	DATE	APPROVED	DATE	NO.	DATE	BY	REVISIONS	DATE	BY
	E.L.D.	L.M.S.	7/2/61	ARCHITECTURAL				1			4		
				ENGINEERING				2			5		
				LANDSCAPE				3			6		



KEY TO Poured IN PLACE SECTIONS:

- 90° CORNER SECTION
- 5' RADIUS CURVE CORNER SECTION
- DRAINAGE OPENINGS

SEE STANDARD PLAN SLUGS FOR CONSTRUCTION DETAILS OF ABOVE ITEMS

MATERIALS ESTIMATE

NO.	PCS.	CODE	LENGTH	BEVEL ENDS (BOTH ENDS - 2)
182	1A	5'	1000'	1000
14	1	6'	1000'	1000
28	1	6'	1000'	1000
27	1	6'	1000'	1000

POURED IN PLACE ITEMS

- 20 DRAIN OPENINGS
- 8 90° CORNER SECTIONS
- 8 5' RADIUS CORNER SECTIONS

REQUIRED MATERIALS

- 8510# CEMENT
- 66 CUB. YDS. CONCRETE AGGREGATE
- 424 CUB. FT. 3/4" SAND
- 48 Pcs. 1/2" x 2" x 4" LUMBER PLS.
- LUMBER IS REQUIRED FOR FORMING

SCALE 1" = 20'

MICHIGAN
DEPARTMENT OF CONSERVATION
PARKS AND RECREATION DIVISION

INDIAN LAKE STATE PARK
PRECAST CURB PLAN

SHEET NO. 1 OF 1
PLAN NO. 1-108