

BENCH MARKS

B.M.#1 6"x6" CONC. MON. U.S. GEOLOGICAL SURVEY - B.M.# TT58-9 ELEV. 619.47

B.M.#4 SPIKE IN N. SIDE OF SIGN POST AT PARK ENTRANCE ELEV. 622.59

B.M.#6 SPIKE IN NORTH SIDE 10' POPLAR OPPOSITE ROWS RESORT ENTRANCE ELEV. 619.47

B.M.#8 SPIKE E. SIDE TEL. POLE ELEV. 627.66

B.M.#11 SPIKE E. SIDE 5" WHITE BIRCH AT LAKE SHORE ELEV. 614.92

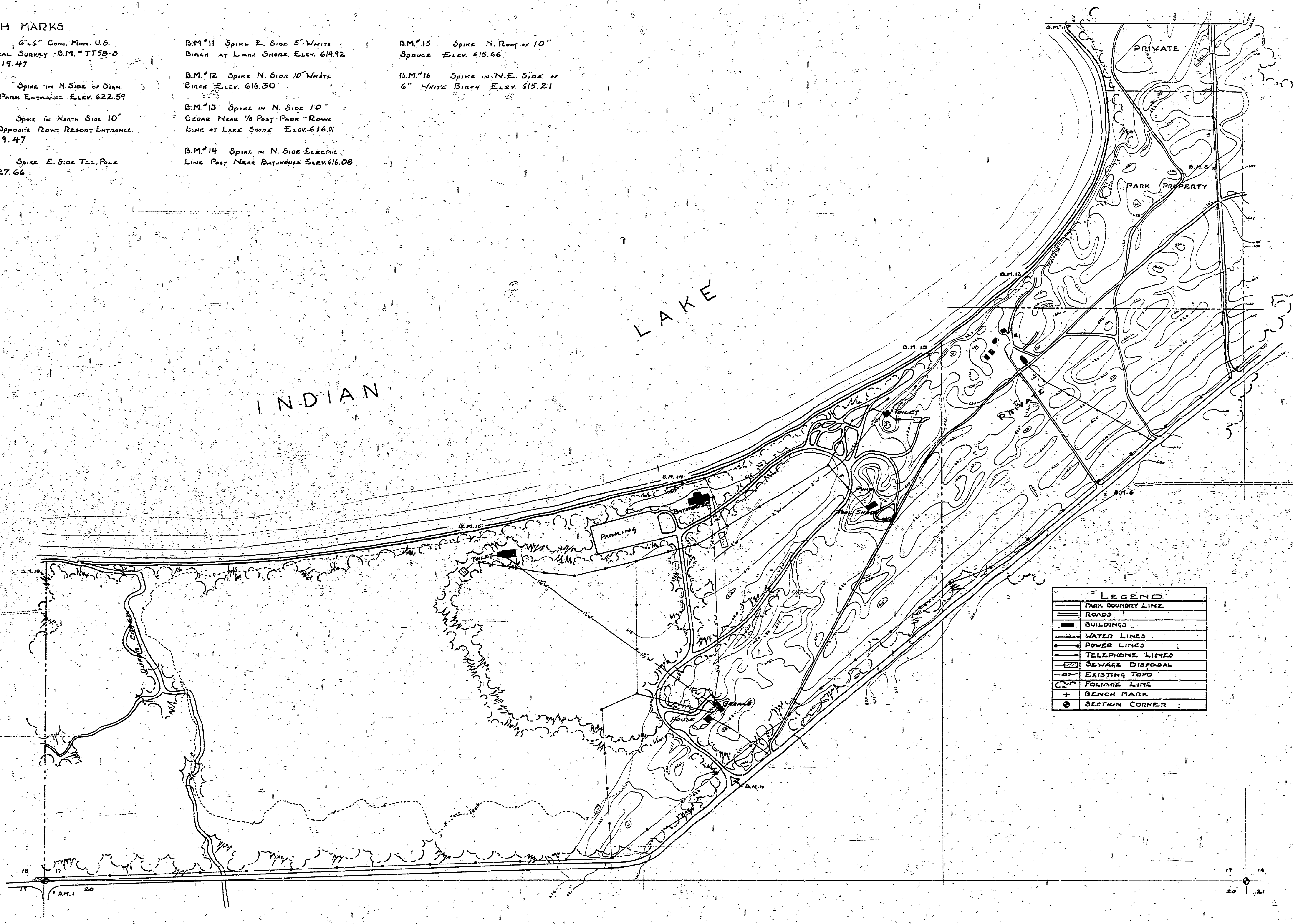
B.M.#12 SPIKE N. SIDE 10" WHITE BIRCH ELEV. 616.30

B.M.#13 SPIKE IN N. SIDE 10" CEDAR NEAR 1/8 POST PARK - ROWS LINE AT LAKE SHORE ELEV. 616.01

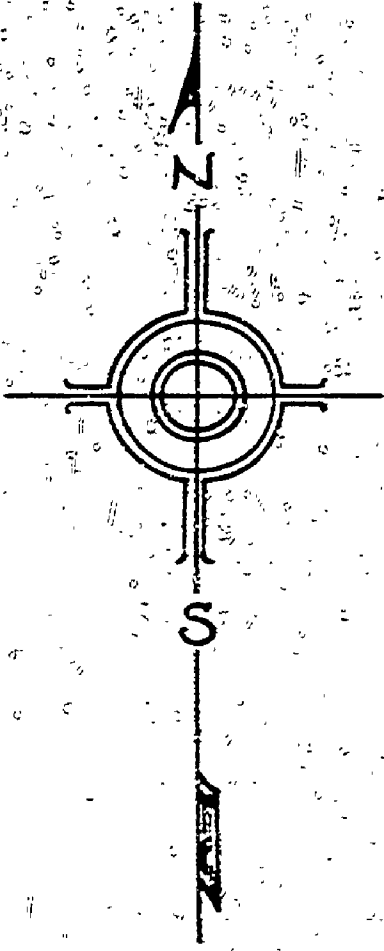
B.M.#14 SPIKE IN N. SIDE ELECTRIC LINE POST NEAR BATHHOUSE ELEV. 616.08

B.M.#15 SPIKE N. ROOF OF 10" SPRUCE ELEV. 615.66

B.M.#16 SPIKE IN N.E. SIDE OF 6" WHITE BIRCH ELEV. 615.21



LEGEND	
	PARK BOUNDARY LINE
	ROAD
	BUILDINGS
	WATER LINES
	POWER LINES
	TELEPHONE LINES
	SEWAGE DISPOSAL
	EXISTING TOPO
	FOLIAGE LINE
	BENCH MARK
	SECTION CORNER



MICHIGAN DEPARTMENT
CONSERVATION STATE PARKS DIVISION

INDIAN LAKE STATE PARK
BASE MAP

SCALE 200'

MARCH 5, 1942