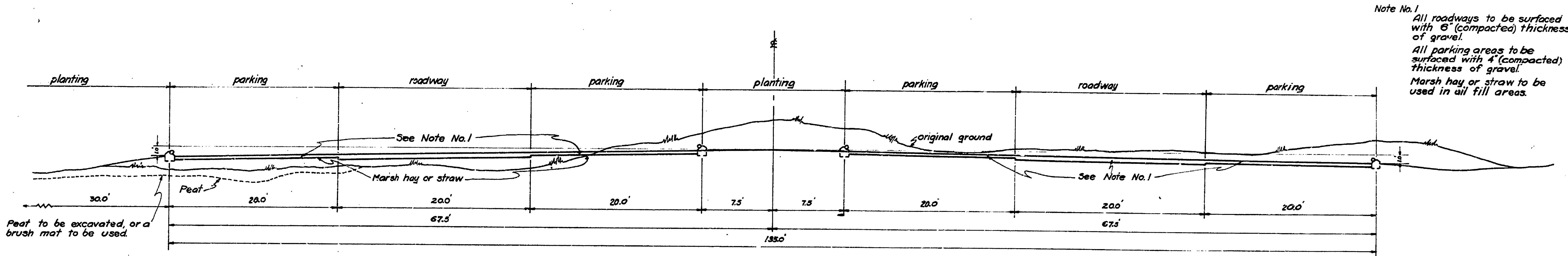


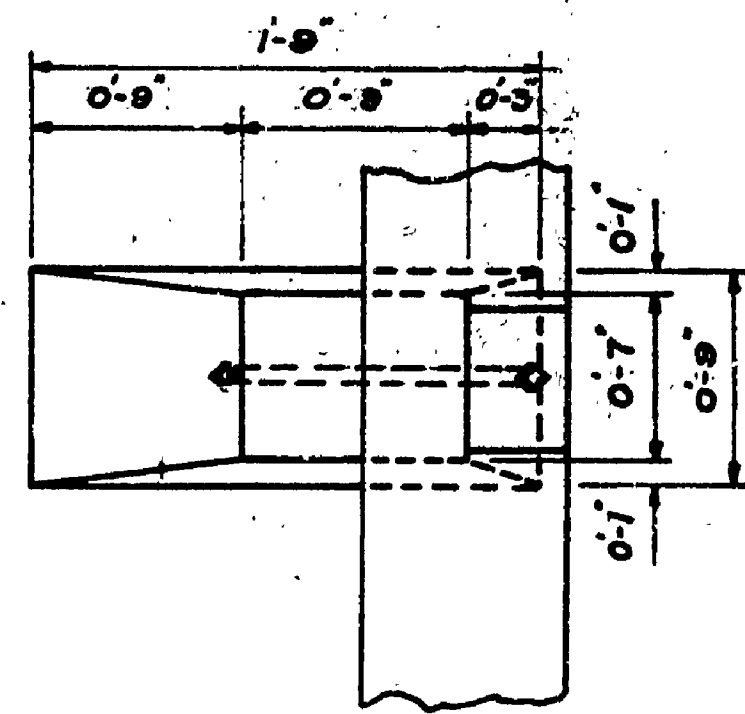
# TYPICAL CROSS-SECTION

NO SCALE

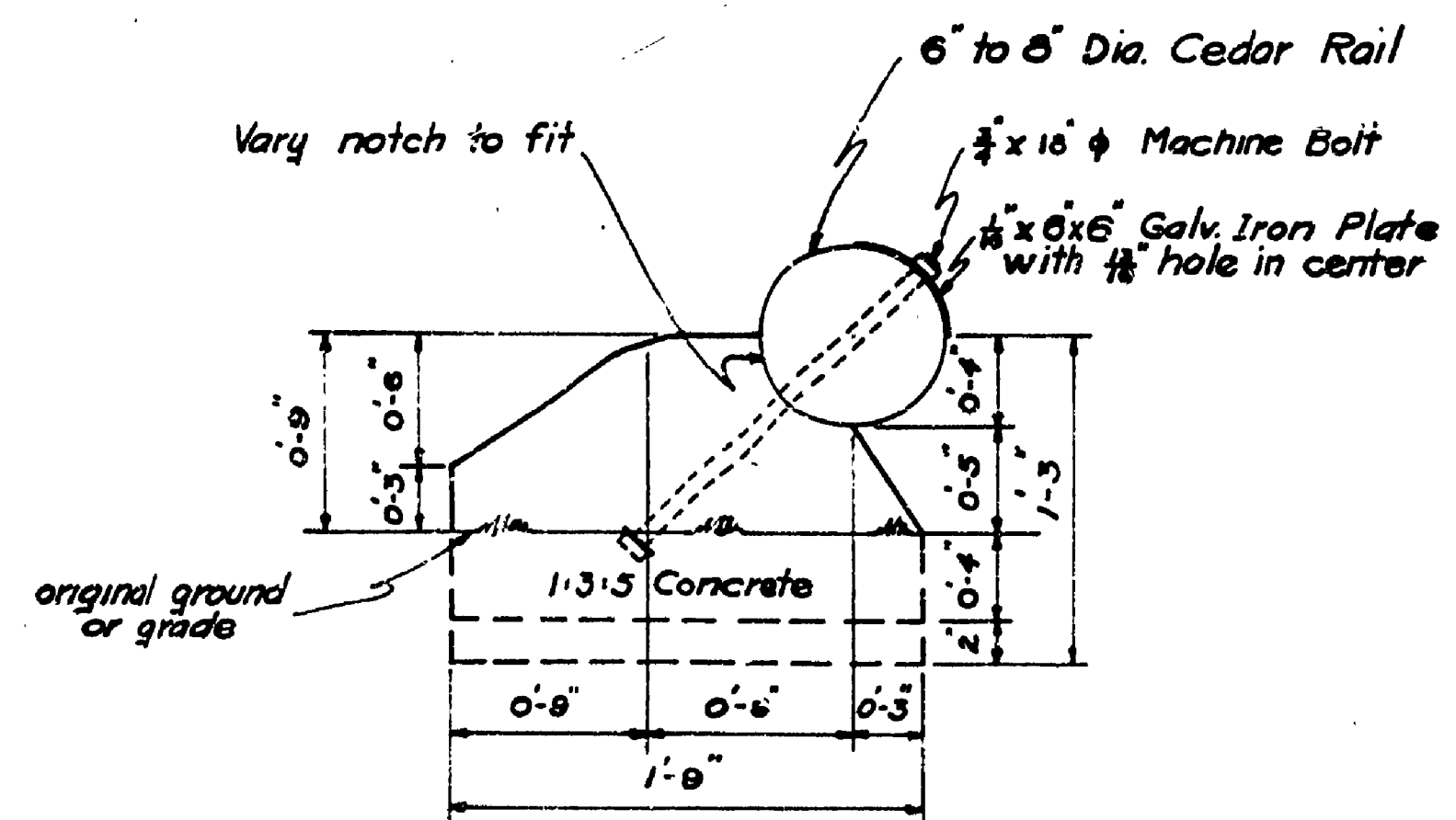


# BARRIER DETAILS

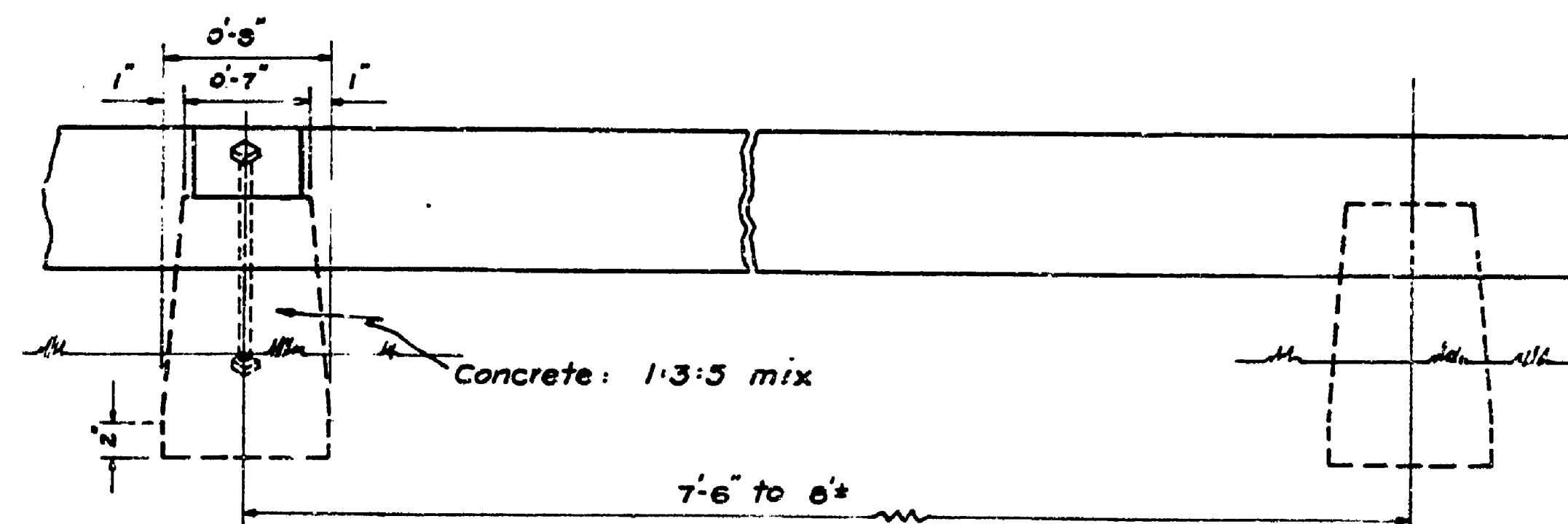
Scale: 1/2" = 1'-0"



PLAN



SIDE ELEVATION



FRONT ELEVATION

## BILL OF MATERIALS

Item No.	ARTICLE	SIZE	QUAN	UNIT	Unit Price	AMT
1	Cedar Rails	6"-6" x 6"-4"	472	ea.	0.25	118.00
2	Cedar Rails	6"-6" x 6"-6"	175	ea.	0.25	43.75
3	Cedar Rails	6"-6" x 6"-10"	74	ea.	0.25	18.50
4	Machine Bolts	3/8" x 16"	1442	ea.	0.12	173.04
5	G.I. Plates	1/2" x 6" x 6"	1442	ea.	0.065	93.50
6	Cement		70	bbbl	2.00	140.00
7	Gravel	B.R.	2700	cyd.		no cost
8	Gravel (concrete)	3/4" Max.	75	cyd.		no cost
9	Form Lumber	1" x 6"	135	bff.	0.035	4.73
10	Form Lumber	1" x 6"	104	bff.	0.035	3.64
11	Marsh Hay					no cost
12	Misc.					38.14
13	Stain, creosote		2	bbbl	3500	7000
<b>TOTAL</b>						<b>\$78000</b>

UNITED STATES  
DEPARTMENT OF THE INTERIOR  
NATIONAL PARK SERVICE  
COOPERATING WITH  
MICHIGAN  
DEPARTMENT OF CONSERVATION

DRAWN BY: R.M.K.  
DESIGNED BY: C.M.L.-H.J.N.-G.P.  
CHECKED BY: C.M.L.  
J.W. WELLS STATE PARK SP9  
PARKING AREA NO. 1  
DATE: 5-13-37

REVISIONS  
MAY 27, 1937  
SECOND REGIONAL OFFICE  
PARKING AREAS CHANGED FROM 15' TO 20' DEEP.  
DIMENSIONS CORRECTED ON TYPICAL CROSS SEC.

PREPARED BY: [Signature]  
RECOMMENDED: [Signature]  
APPROVED: [Signature]  
DATE: 5/17/37  
DATE: 6-2-37