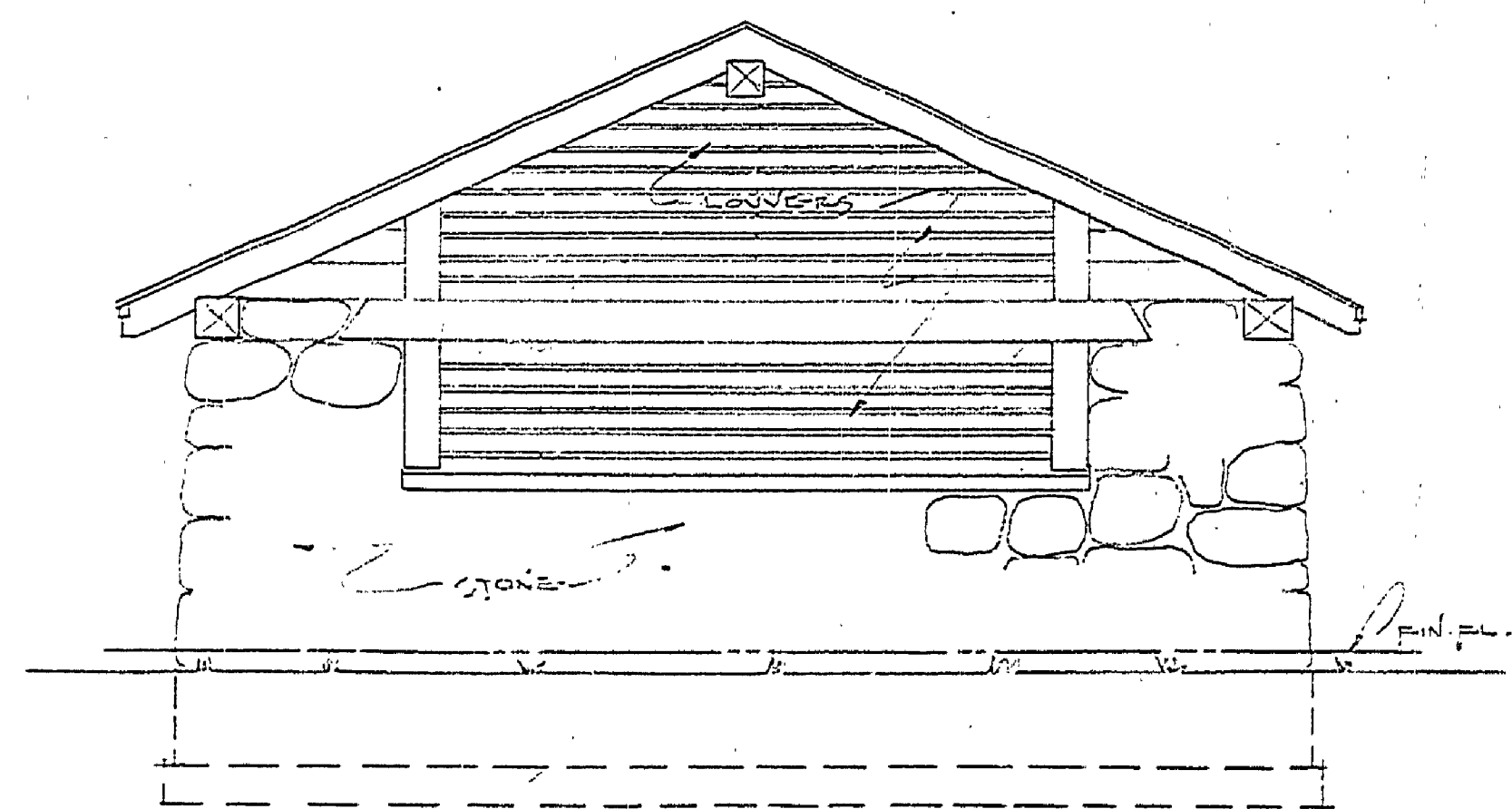
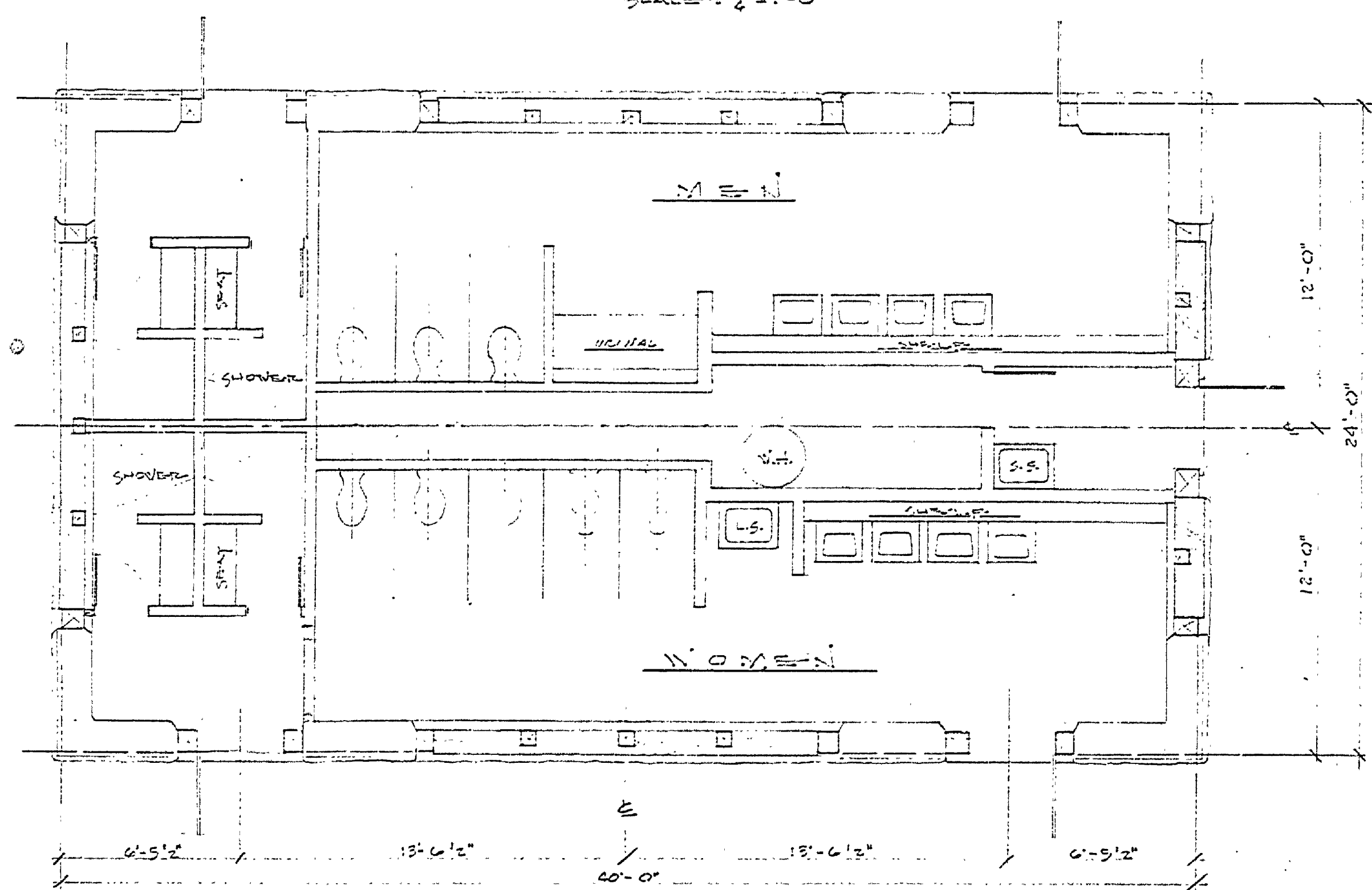


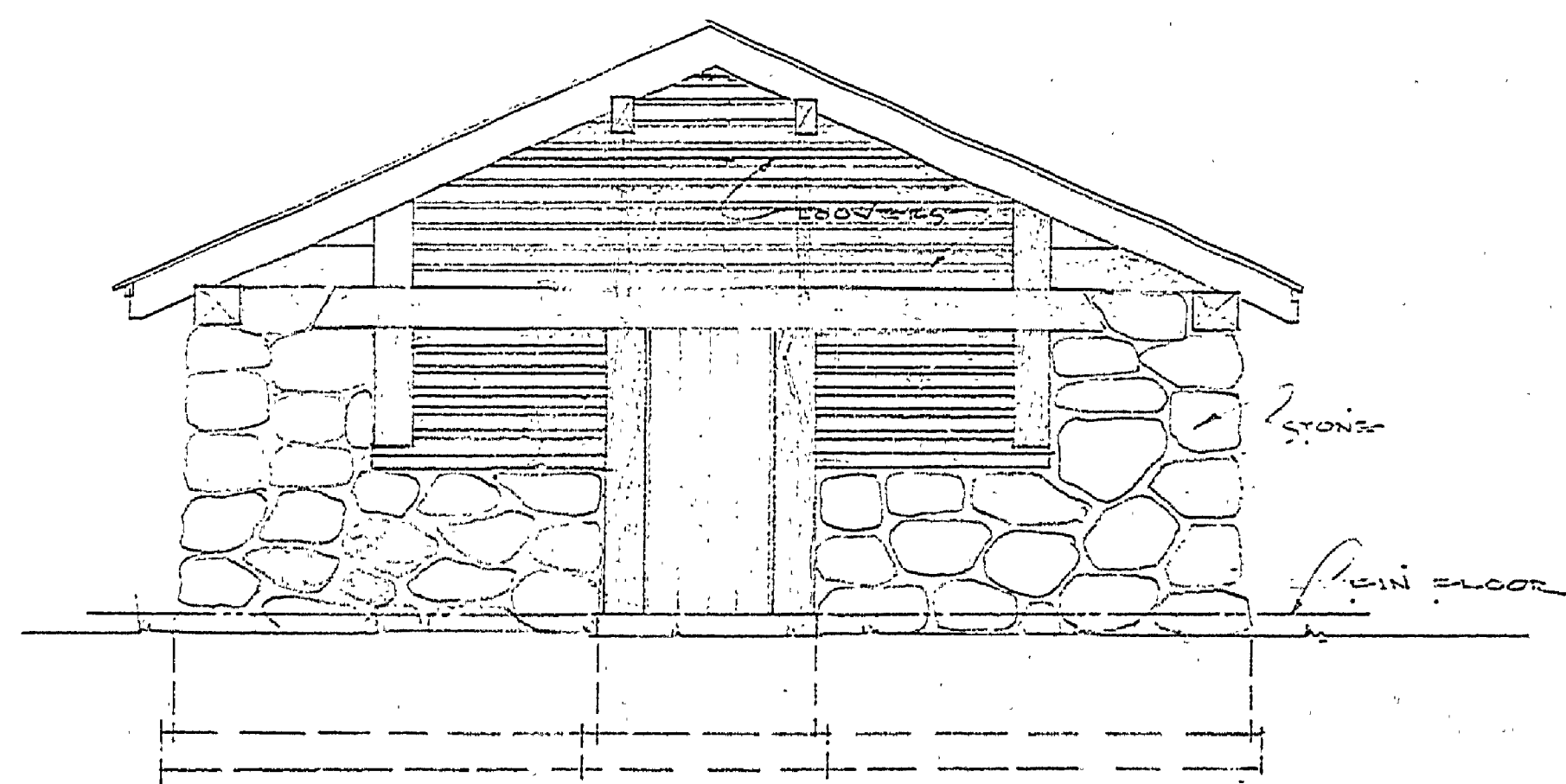
SIDE ELEVATION (TYPICAL)
SCALE: 1/2" = 1'-0"



END ELEVATION
SCALE: 1/2" = 1'-0"



FLOOR PLAN
SCALE: 1/2" = 1'-0"



END ELEVATION
SCALE: 1/2" = 1'-0"

TOILET & SHOWER BLDG. #
PROPOSED RE-MODEL
HARRISVILLE STATE PARK
AUG 20, 1961
DORRIS W. PIERCE

A-104