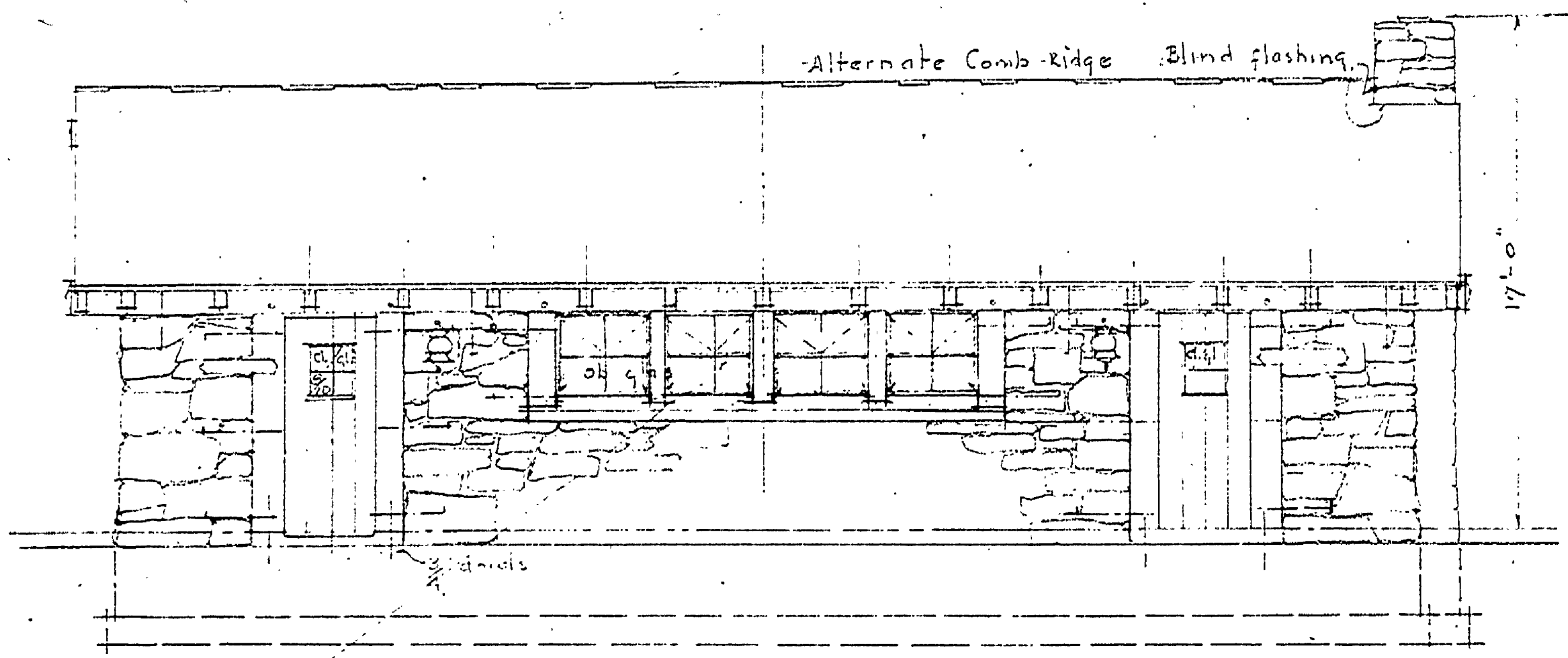
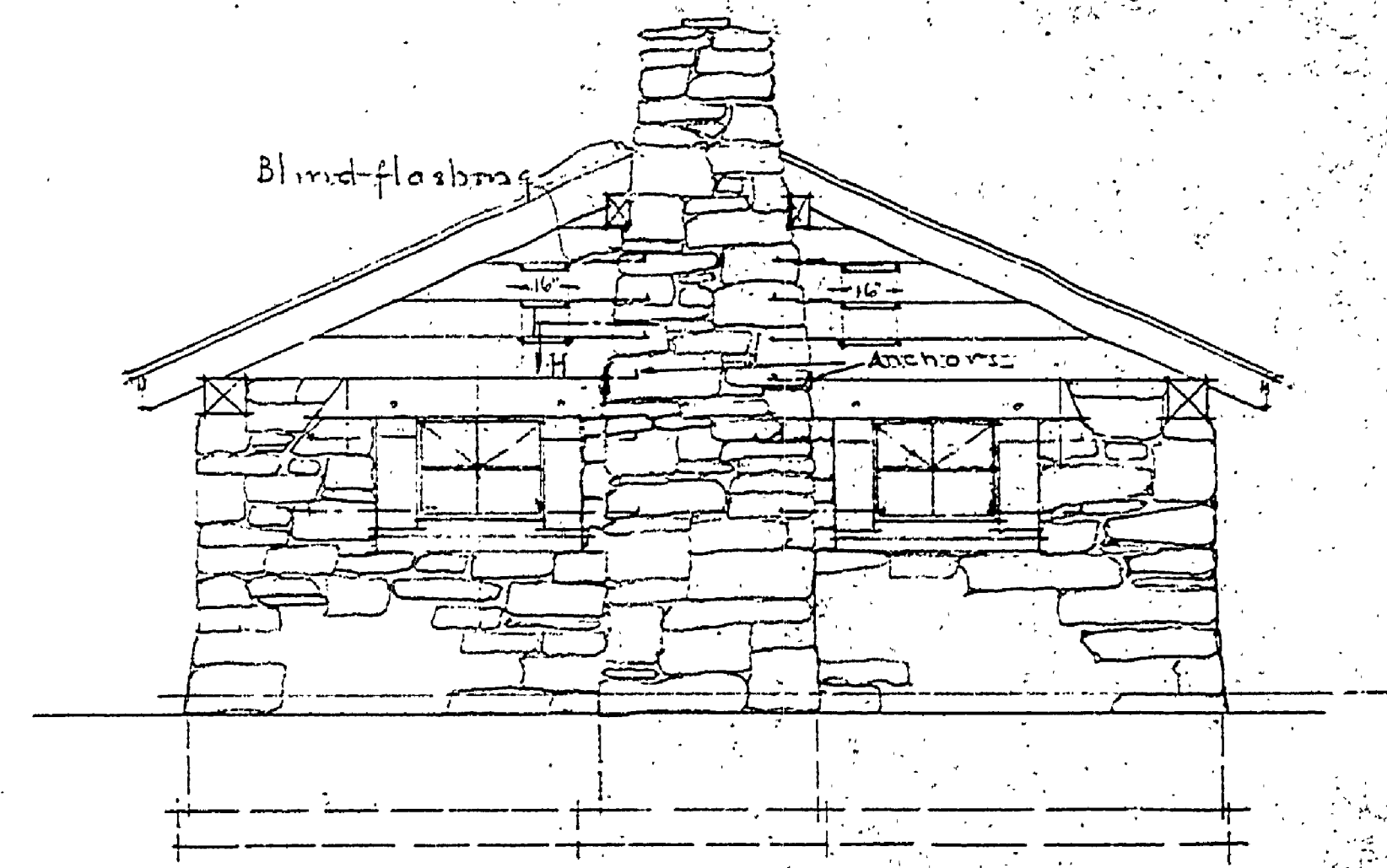


FRONT ELEVATION
Scale 1/4" = 1'-0"

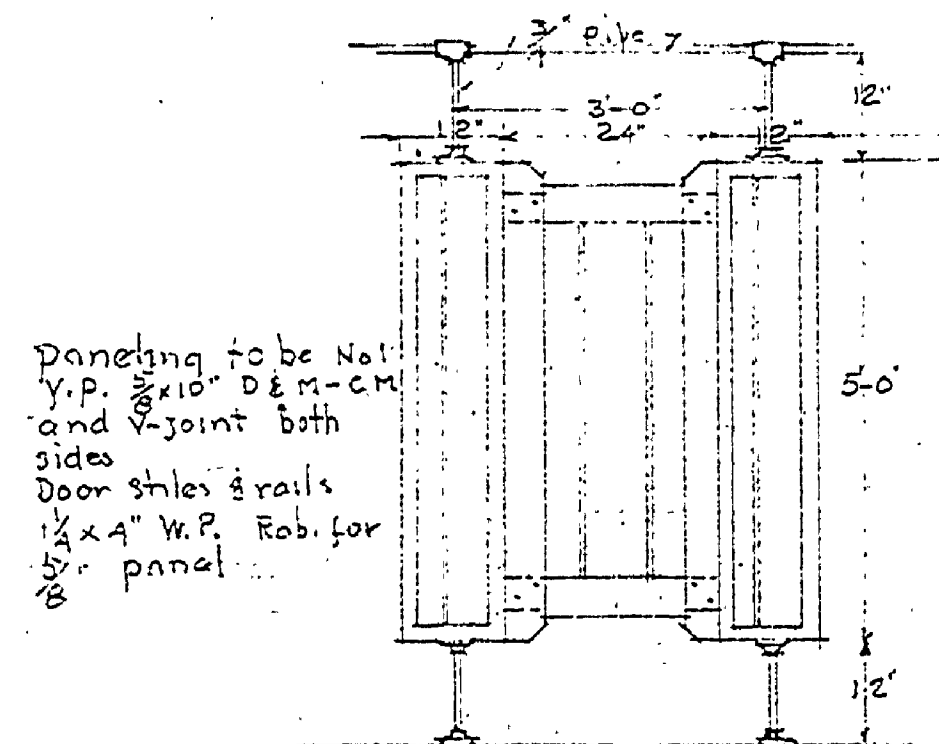


TYPICAL SIDE ELEVATION
Scale 1/4" = 1'-0"



REAR ELEVATION
Scale 1/4" = 1'-0"

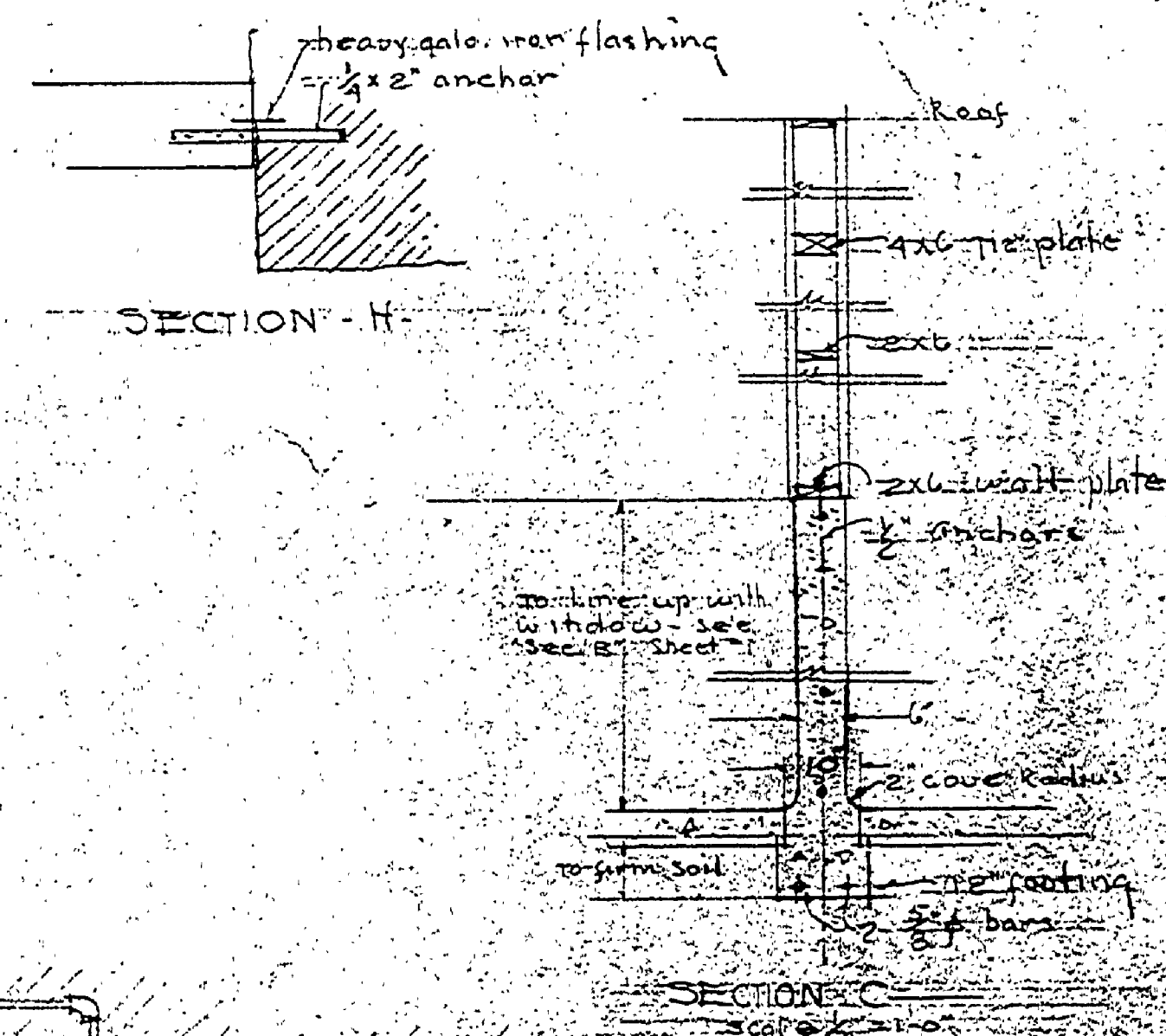
Sash: All sash to be steel
Approx. 2'-11" wide 2'-3 1/2" high with
one vertical and one horizontal muntin
flashing to be fitted in sections as shown
Note: Rev. 10/22/40



Danching to be Nat. Y.P. 2x12 D.M.-C.M. and joint both sides
Door shies 4 rails
1/4" x 4" W.P. Rob. for 6" panel

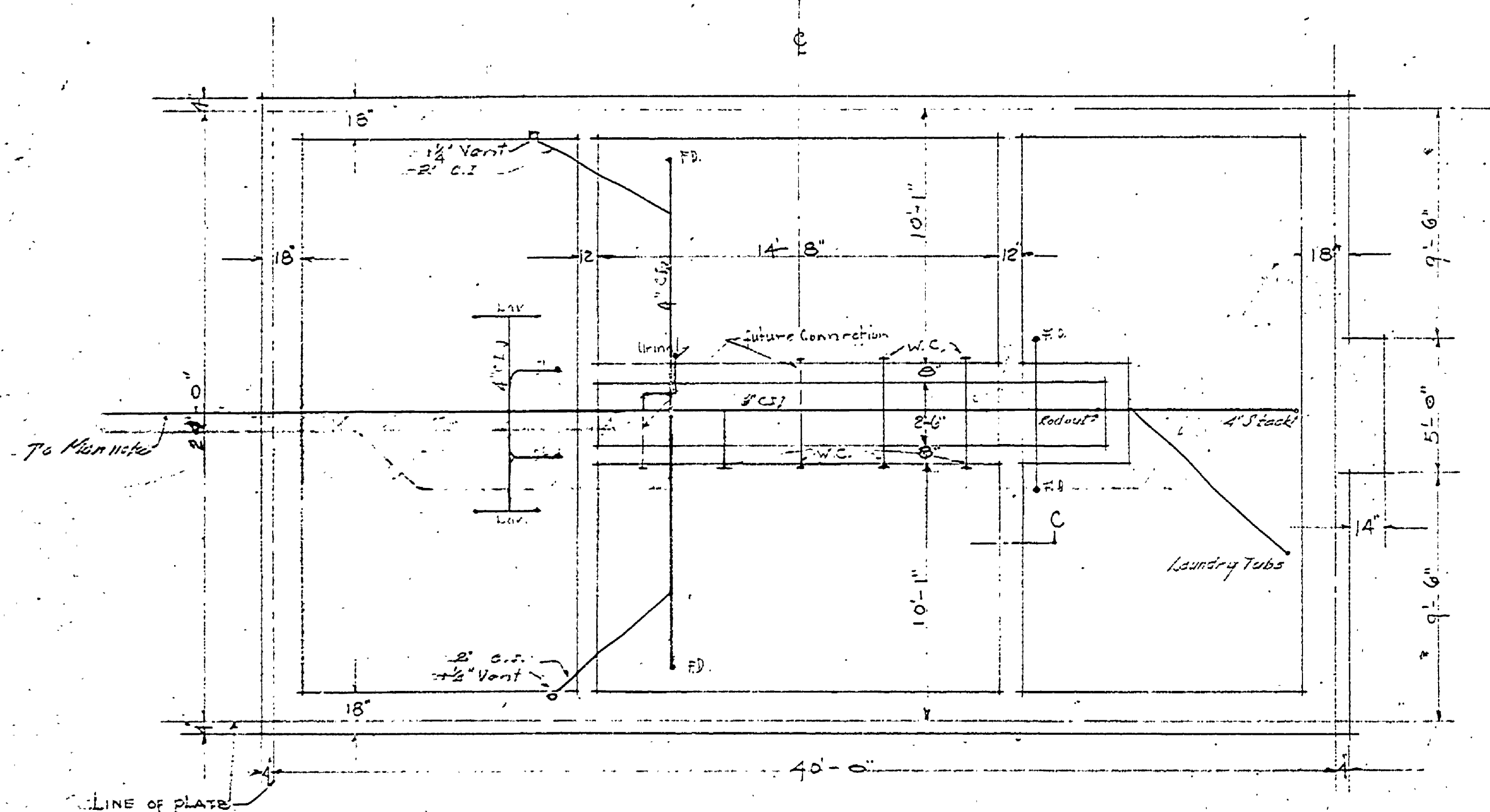
STALL DETAIL
Scale 1/2" = 1'-0"

Note: for side elevation see section B
Above: Detail of door to be used for shower room

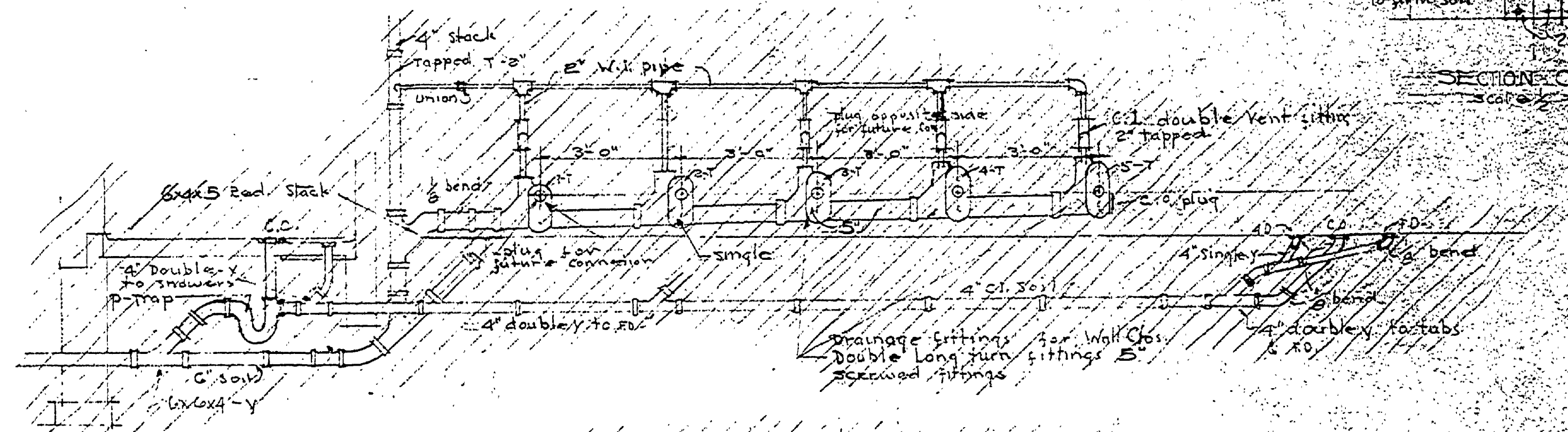


SECTION - H

SECTION - C



FOUNDATION PLAN
Scale 1/4" = 1'-0"



DETAILED ASSEMBLY OF DRAINAGE FITTINGS FOR WALL TYPE W.C. & DRAINAGE SYSTEM

MICHIGAN
DEPARTMENT OF CONSERVATION
PARKS DIVISION

PROJECT NO.	DATE
DESIGNED BY	CHECKED BY
DRAWN BY	APPROVED BY

A-104
REVISED APRIL 12, 1940