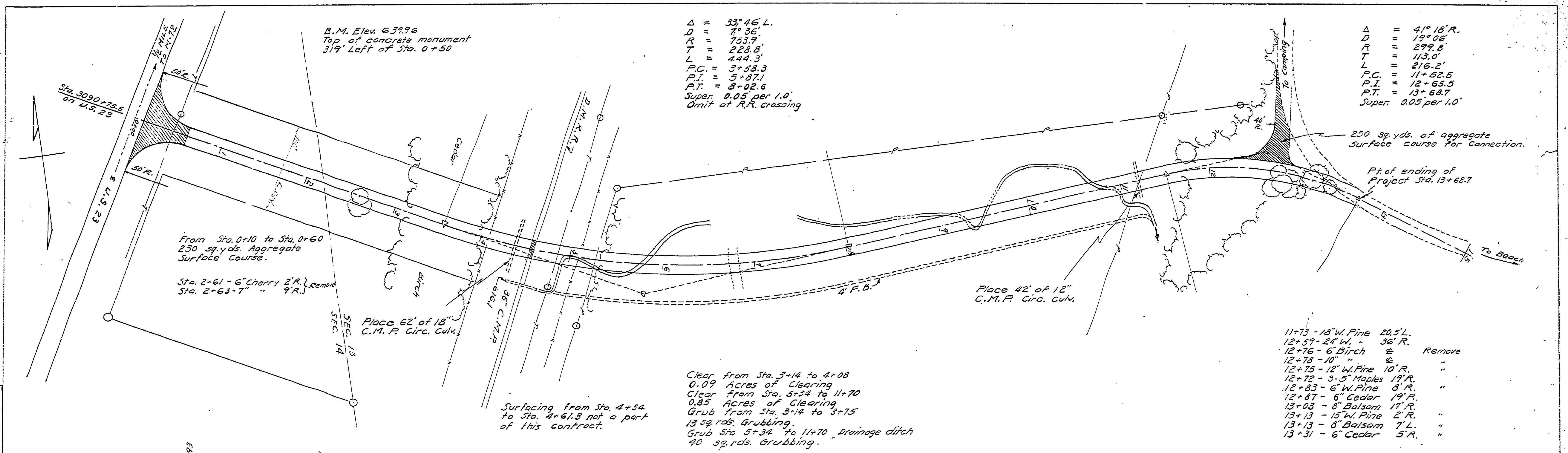


DATE: _____
 BY: _____
 CHECKED: _____
 DATE: _____

APPROVED BY: _____
 ASSISTANT CHIEF IN CHARGE OF DESIGN

DATE: 7-24-48
 BY: Mincard

REVIEWED BY SECTIONS DATE:
 ENGINEERING H.C.H. 10/14/48
 ARCHITECTURAL B.P. 10/14/48
 LANDSCAPE D.A.W. 9/12/48



Δ = 33° 46' L.
 D = 70 36'
 R = 753.9'
 T = 228.8'
 L = 444.3'
 P.C. = 3+58.3
 P.T. = 5+87.1
 S.P. = 8+02.6
 Super. 0.05 per 1.0'
 Omit at R.R. crossing

Δ = 41° 18' R.
 D = 19° 06'
 R = 299.8'
 T = 113.0'
 L = 216.2'
 P.C. = 11+52.5
 P.T. = 12+65.5
 S.P. = 13+68.7
 Super. 0.05 per 1.0'

11+73 - 18" W. Pine 20.5'L.
 12+59 - 24" W. " 36'R.
 12+76 - 6" Birch " Remove
 12+78 - 10" " "
 12+75 - 12" W. Pine 10'R. "
 12+72 - 3-5" Maples 19'R. "
 12+83 - 6" W. Pine 8'R. "
 12+87 - 6" Cedar 19'R. "
 13+03 - 8" Balsam 17'R. "
 13+13 - 15" W. Pine 2'R. "
 13+13 - 8" Balsam 7'L. "
 13+31 - 6" Cedar 5'R. "

