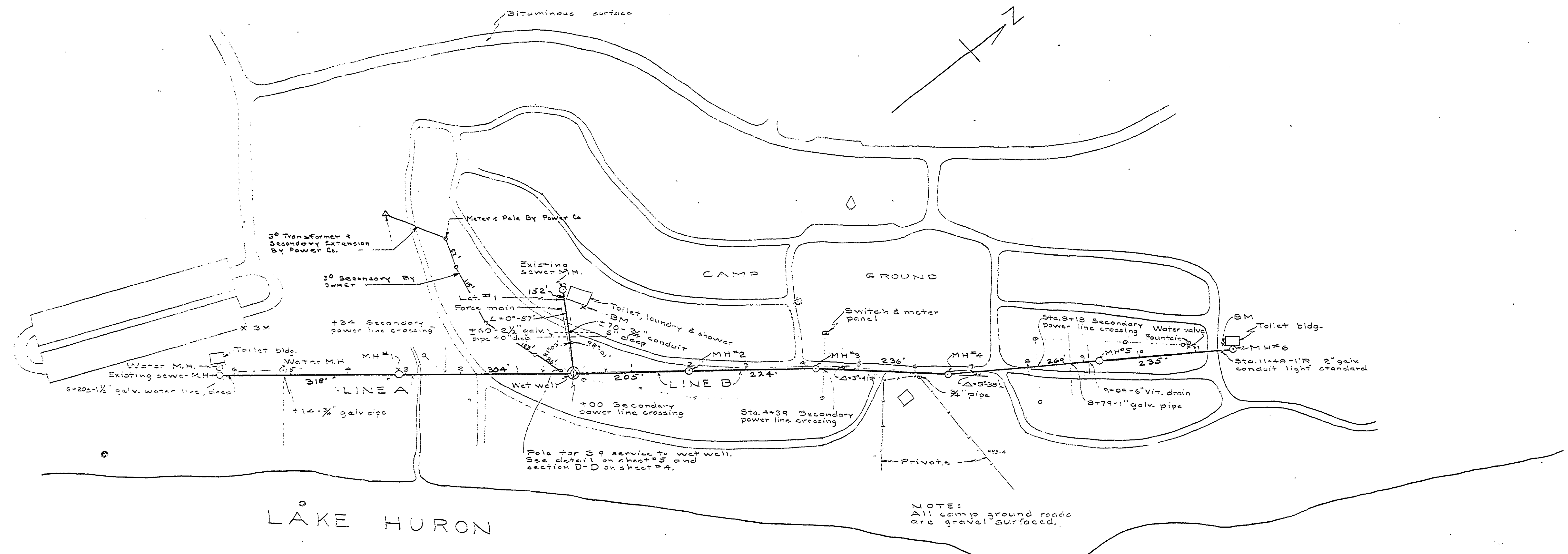


DRAWN BY K. E. B.	CHECKED BY Z. J. P.	DATE 12 July 1960	REVIEWED BY SECTIONS	DATE	APPROVED BY	
			ARCHITECTURAL	J.P.R.	8-25-60	<i>H.C. [Signature]</i>
			ENGINEERING	J.P.R.	8-25-60	
LANDSCAPE	J.P.R.	8-25-60				
NO. DATE BY			REVISIONS			
1	11-10-60	B.M.G.	1	Show Location of 15 Transformer & Secondary Extension to Wet Well	4	
2			2		5	
3			3		6	

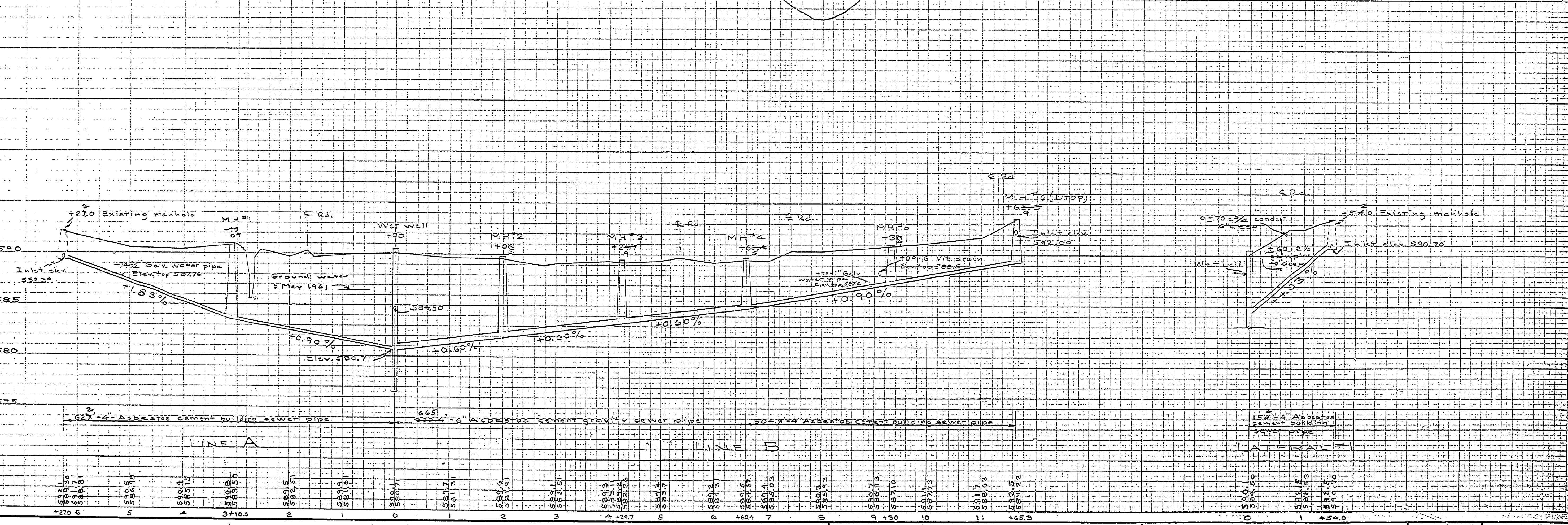
BM Elev. 594.29  
Checked on top of seat curb  
3.3 from north end of 4'2" north of toilet.

BM Elev. 594.65  
Checked on laundry entrance  
platform, south campground toilet.

BM Elev. 594.80  
Checked on floor (not on entrance slab)  
west side of women's entrance to  
north campground toilet.



NOTE:  
All camp ground roads  
are gravel surfaced.



SEWER LINES: A & B & LATERAL #1

MICHIGAN  
DEPARTMENT OF CONSERVATION  
PARKS AND RECREATION DIVISION

HARRISVILLE STATE PARK  
CENTRAL SEWAGE DISPOSAL SYSTEM  
SCALE: AS SHOWN

SHEET  
NO. 2  
OF 6  
PLAN NO.  
E-112