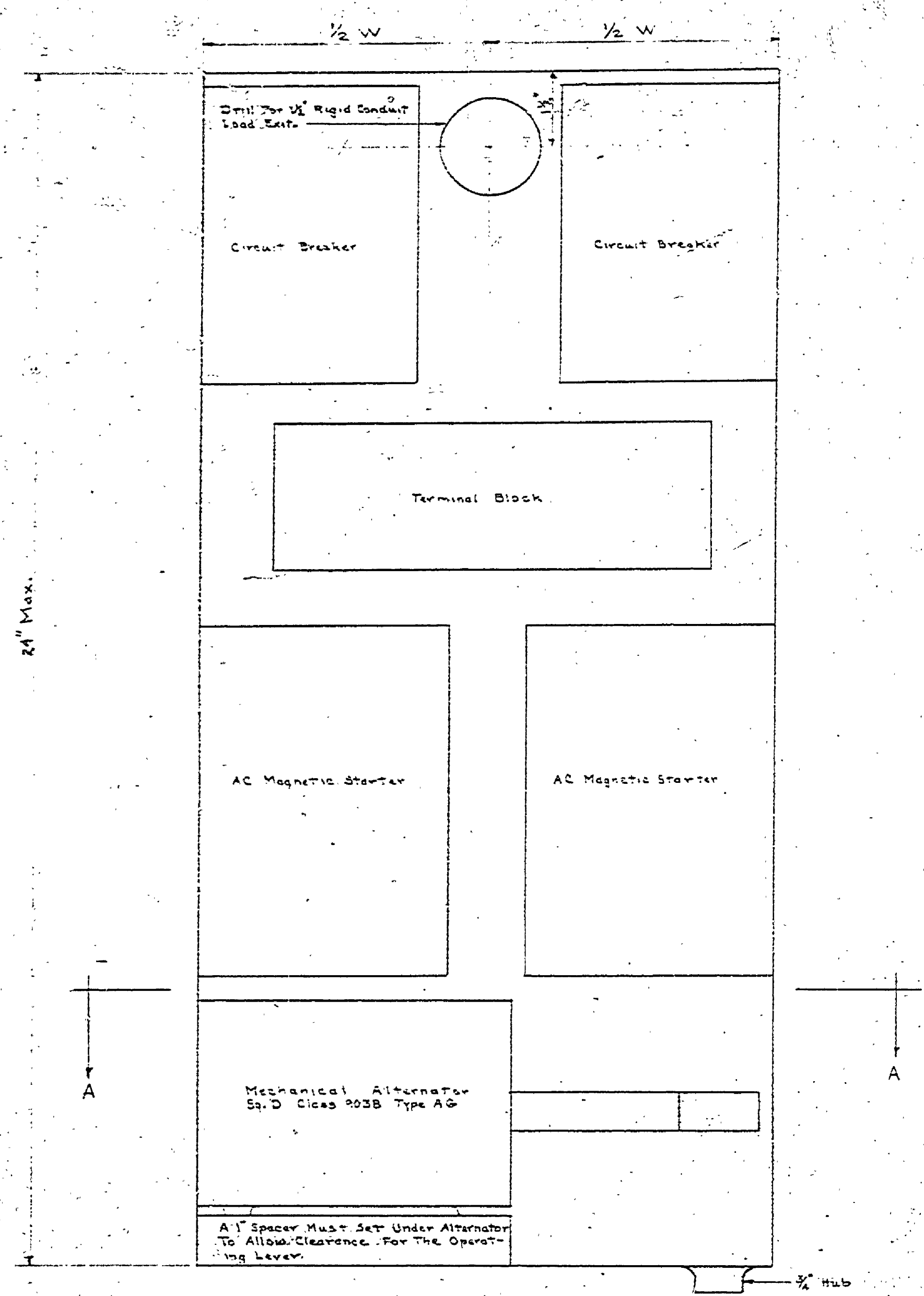
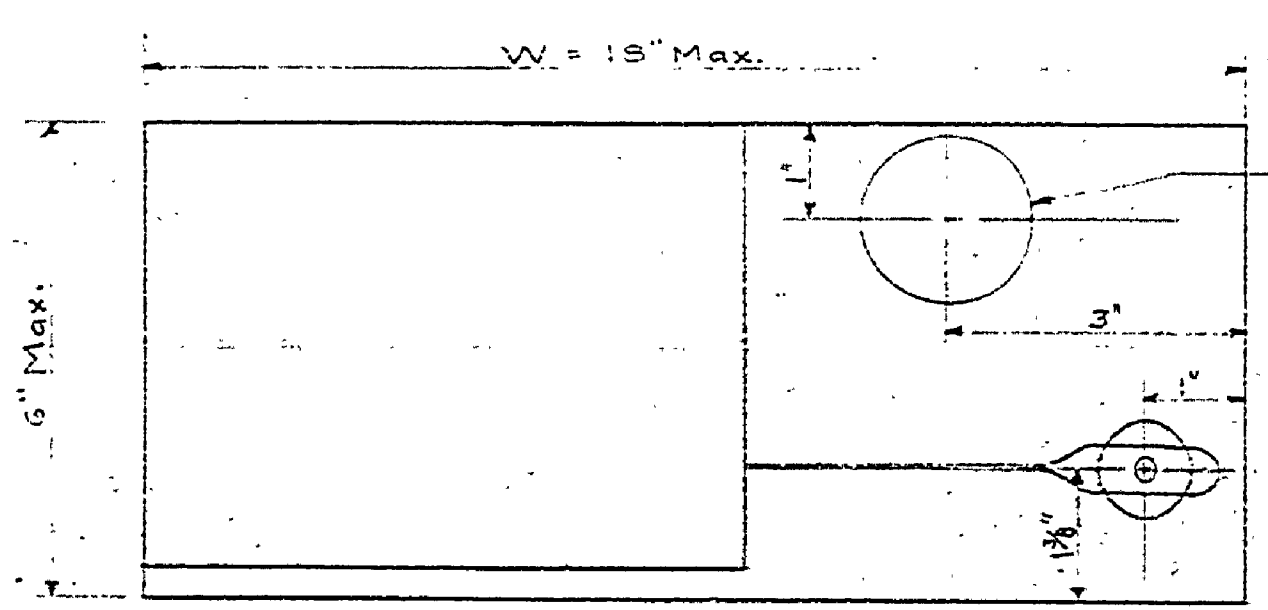


|      |          |     |         |        |
|------|----------|-----|---------|--------|
| DATE | REVISION | NO. | DATE    | BY     |
|      | 1        | 1   | 8-25-66 | J.L.R. |
|      | 2        | 2   | 8-25-66 | J.L.R. |
|      | 3        | 3   | 9-25-66 | J.L.R. |
|      | 4        | 4   |         |        |
|      | 5        | 5   |         |        |
|      | 6        | 6   |         |        |

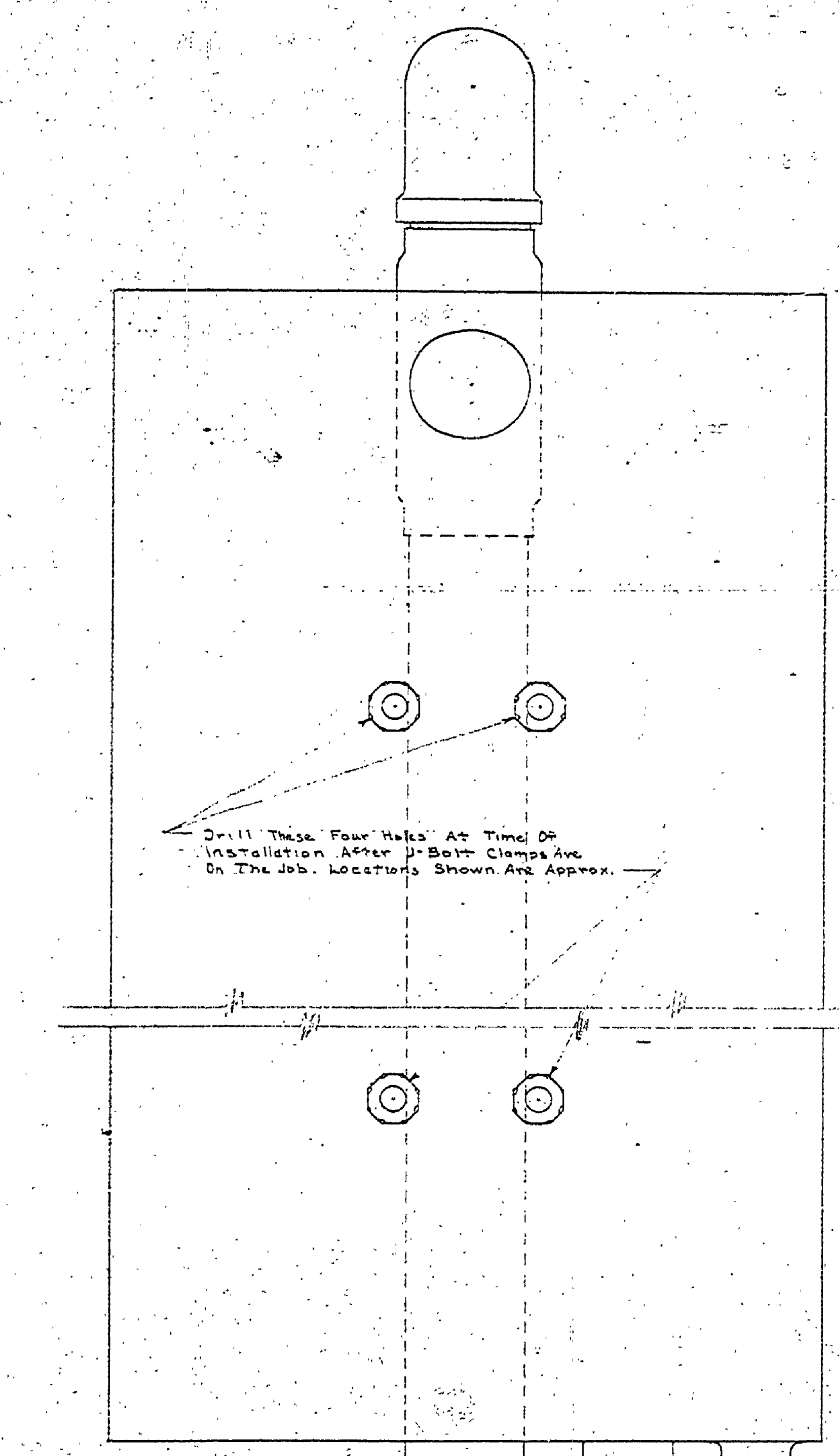


FRONT WITH COVER REMOVED



SECTION A-A

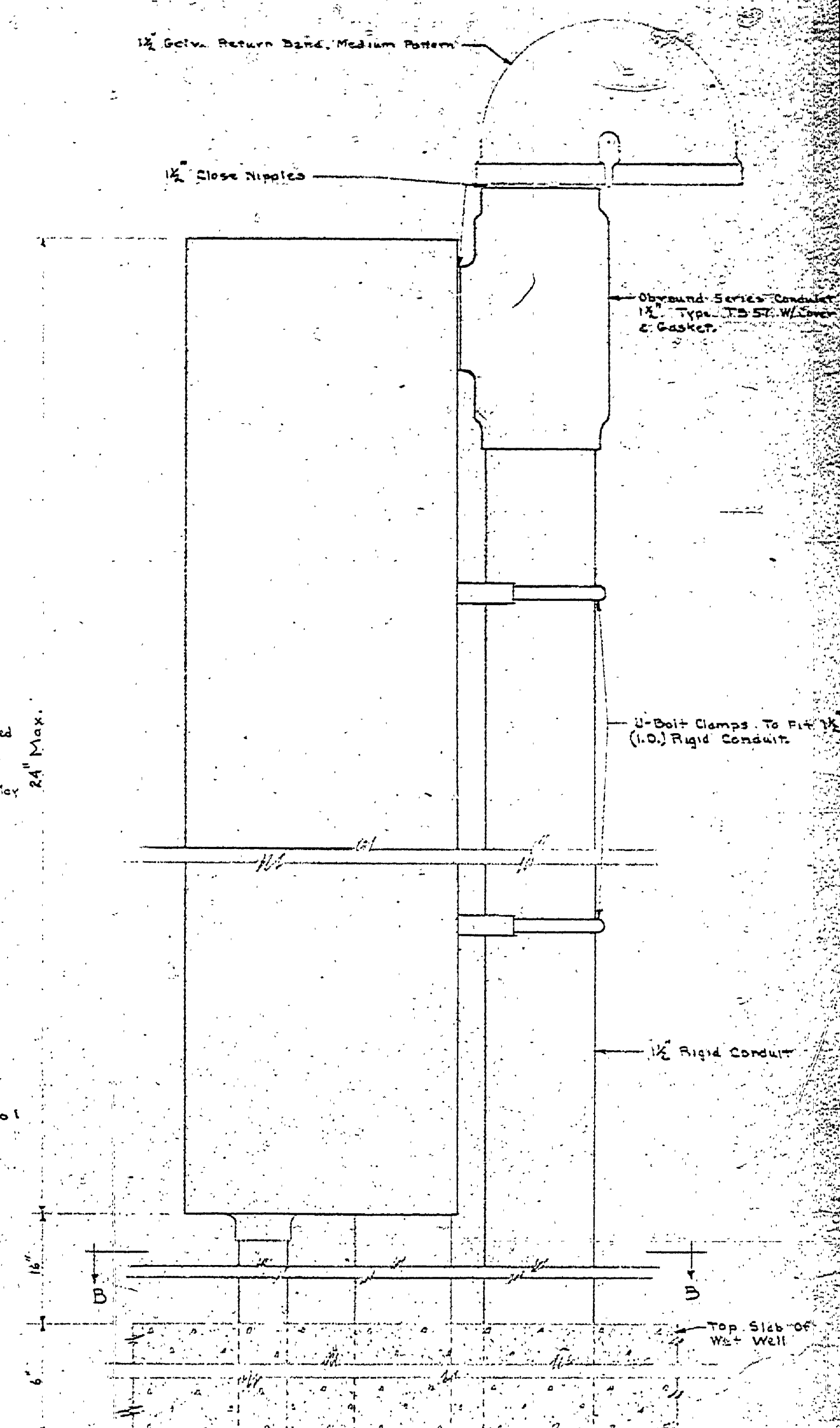
CONTROL FOR DUAL PUMPS



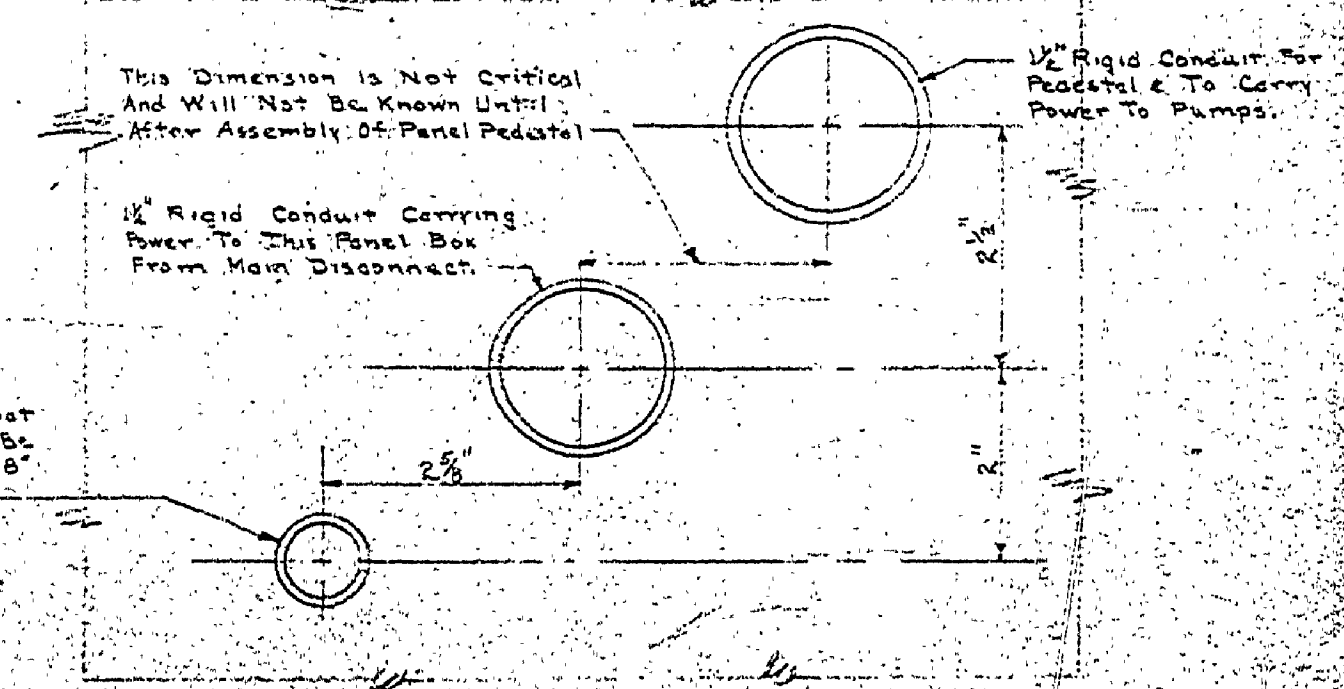
FRONT VIEW WITH COVER AND SWITCHES REMOVED

NOTE: Do Not Pour Top Slab of Wet Well Until After Panel Pedestal is Assembled and Set in Position in Forms for Top Slab. The Floor Rod Guide Must Be Plumb. The 1/2 Pedestal & 3/4 Floor Rod Guide May Extend Beyond Bottom of Top Slab.

Note: 2-3"x2"x1/2" angles were added to support control box.



SIDE VIEW



SECTION B-B

PANEL PEDESTAL INSTALLATION DETAILS