

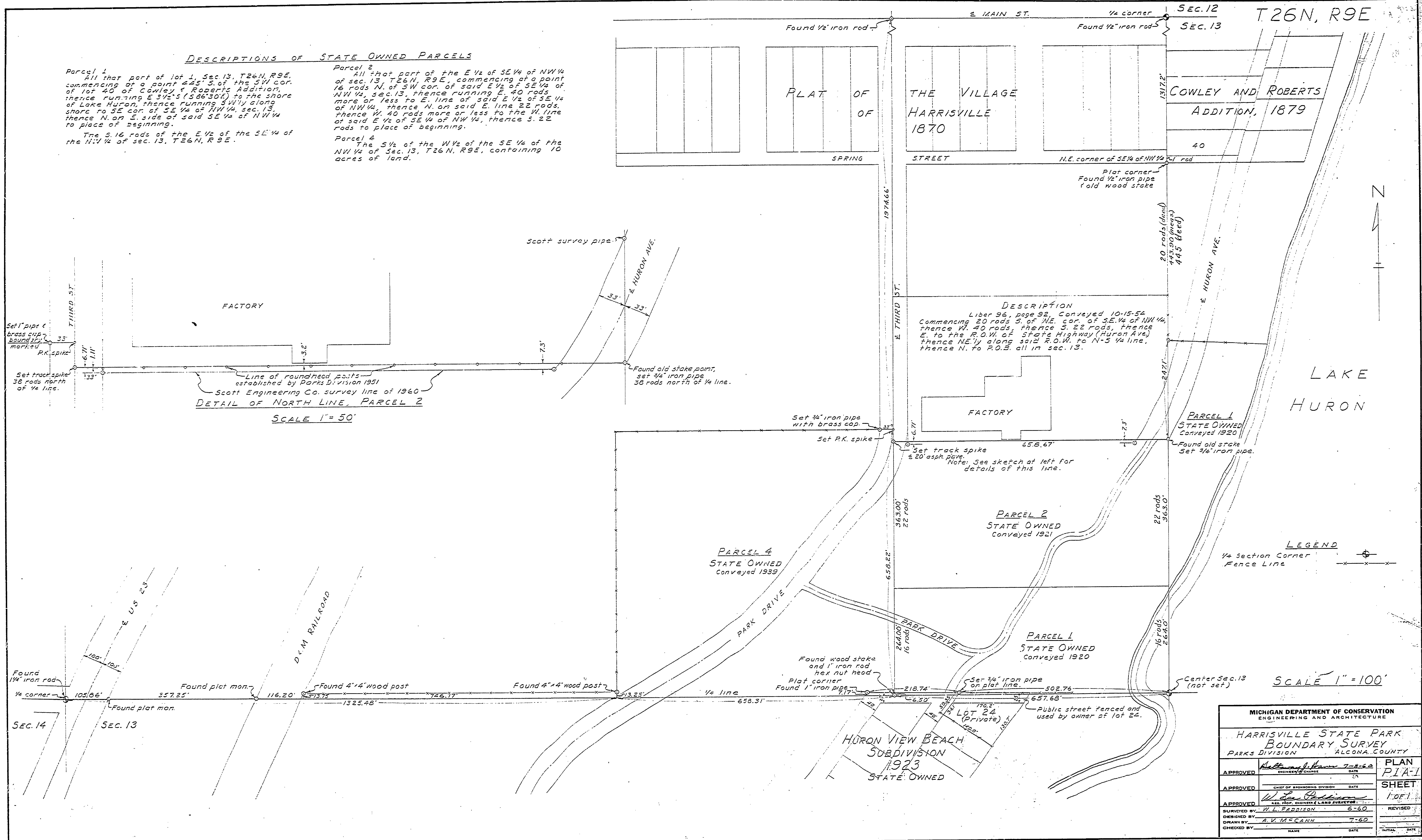
VWP 2-2-63
 VWP 7-2-64
 VWP 7-8-64
 VWP 1-26-64
 VWP 12-27-64
 VWP 8-20-62

DESCRIPTIONS OF STATE OWNED PARCELS

Parcel 1
 All that part of lot 1, Sec. 13, T26N, R9E, commencing at a point 425' S. of the SW cor. of lot 40 of Cowley & Roberts Addition, thence running E 3 1/2 S (586.30') to the shore of Lake Huron, thence running S Wly along shore to SE cor. of SE 1/4 of NW 1/4, sec. 13, thence N. on E. side of said SE 1/4 of NW 1/4 to place of beginning.
 The S. 16 rods of the E 1/2 of the SE 1/4 of the NW 1/4 of sec. 13, T26N, R9E.

Parcel 2
 All that part of the E 1/2 of SE 1/4 of NW 1/4 of sec. 13, T26N, R9E, commencing at a point 16 rods N. of SW cor. of said E 1/2 of SE 1/4 of NW 1/4, sec. 13, thence running E. 40 rods, more or less to E. line of said E 1/2 of SE 1/4 of NW 1/4, thence N. on said E. line 22 rods, thence W. 40 rods more or less to the W. line of said E 1/2 of SE 1/4 of NW 1/4, thence S. 22 rods to place of beginning.

Parcel 4
 The S 1/2 of the W 1/2 of the SE 1/4 of the NW 1/4 of sec. 13, T26N, R9E, containing 10 acres of land.



Line of roundhead posts established by Parks Division 1951
 Scott Engineering Co. survey line of 1940
DETAIL OF NORTH LINE, PARCEL 2
 SCALE 1" = 50'

SCALE 1" = 100'

MICHIGAN DEPARTMENT OF CONSERVATION ENGINEERING AND ARCHITECTURE			
HARRISVILLE STATE PARK BOUNDARY SURVEY PARKS DIVISION ALCONA COUNTY			
APPROVED	<i>William J. Hanson</i> ENGINEER IN CHARGE	7-8-62	PLAN PIA-1
APPROVED	CHIEF OF BOUNDING DIVISION	DATE	SHEET 1 OF 1
APPROVED	<i>W. J. Hanson</i> SAC, P.O. ENGINEER & LAND SURVEYOR	6-60	REVISED
DESIGNED BY	A. V. M. GANN	7-60	DATE
CHECKED BY			INITIAL

E-114 PIA