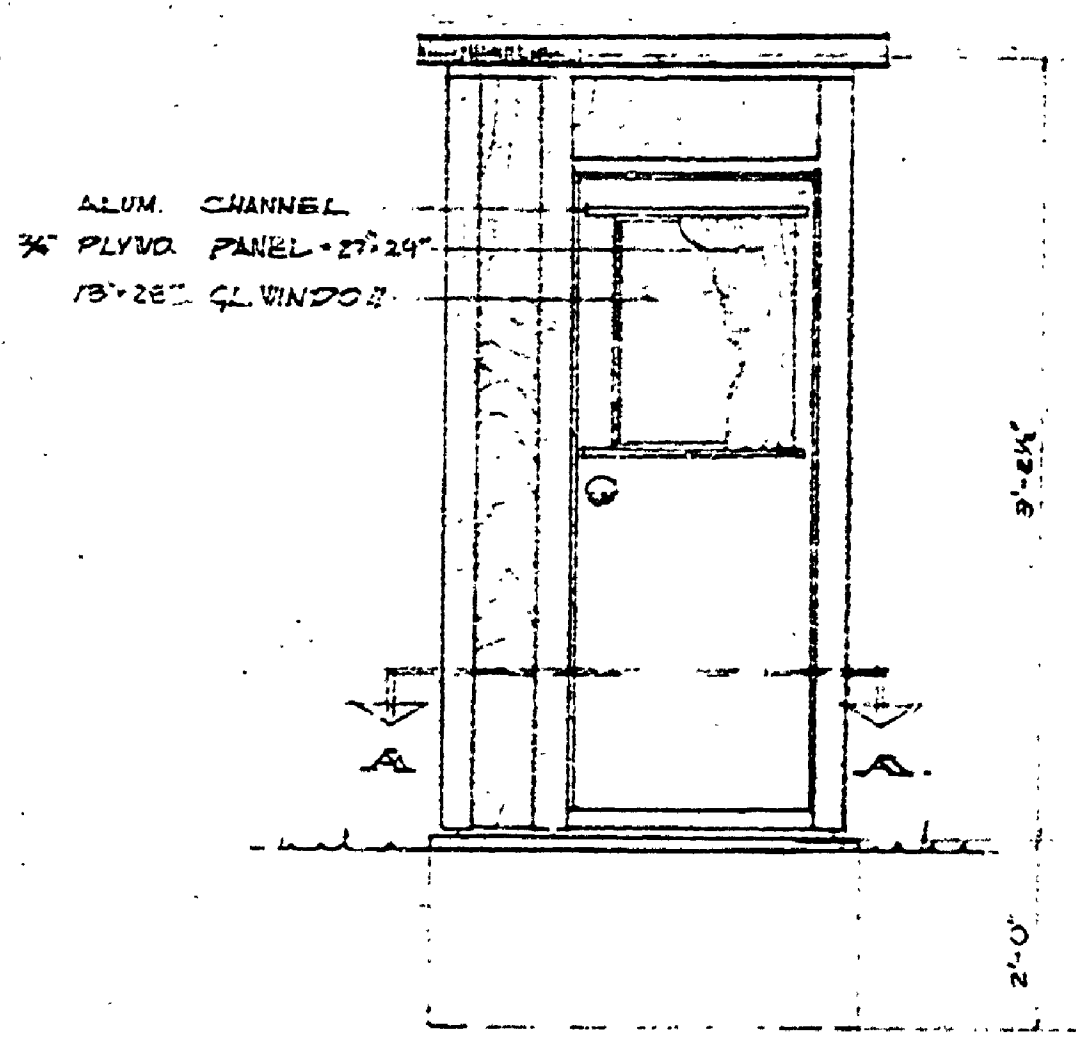
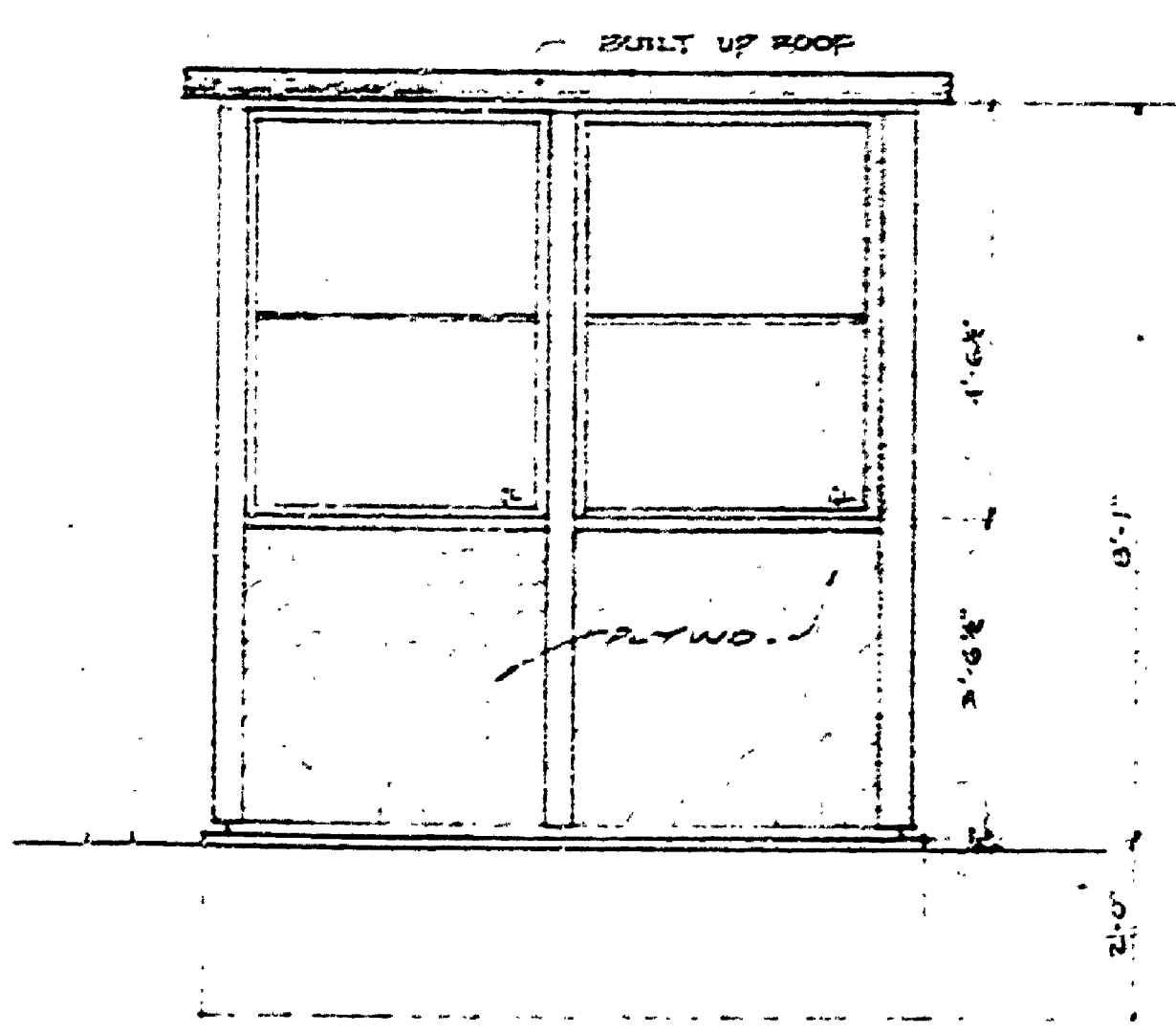


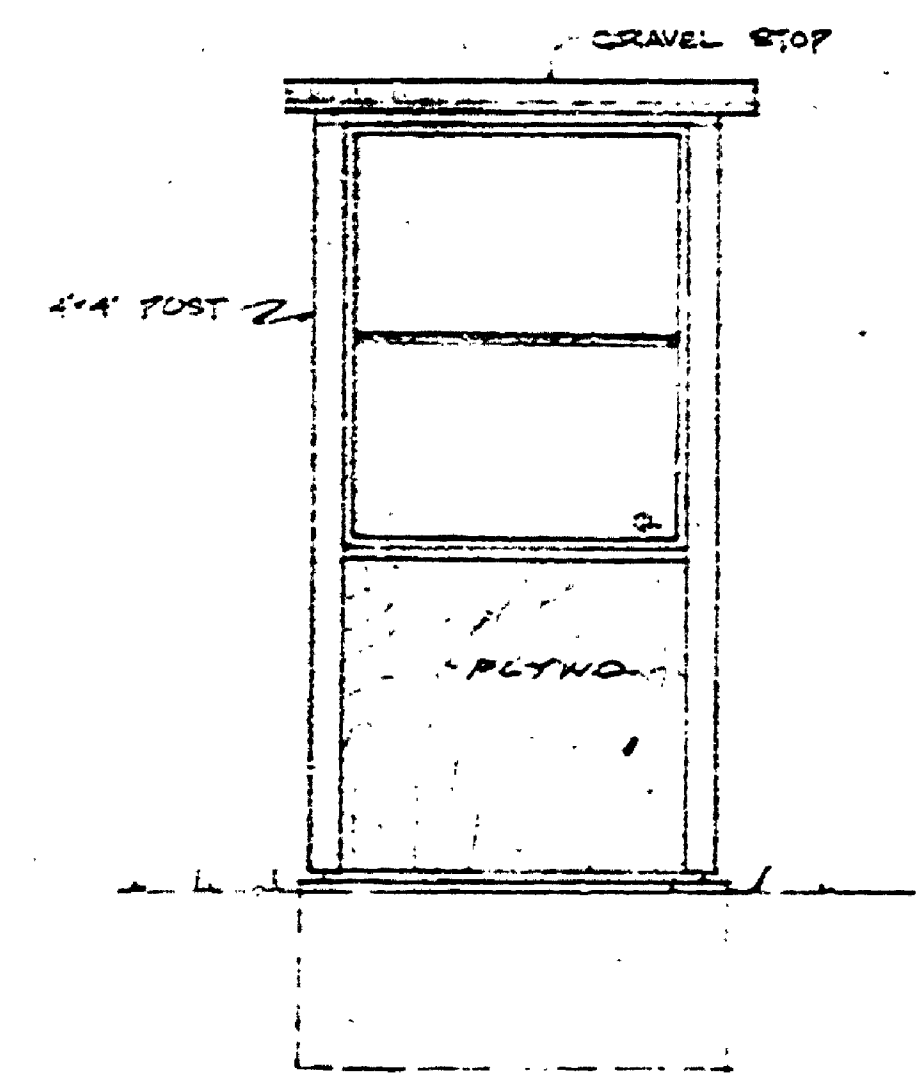
WALL SECTION  
SCALE: 1/2" = 1'-0"



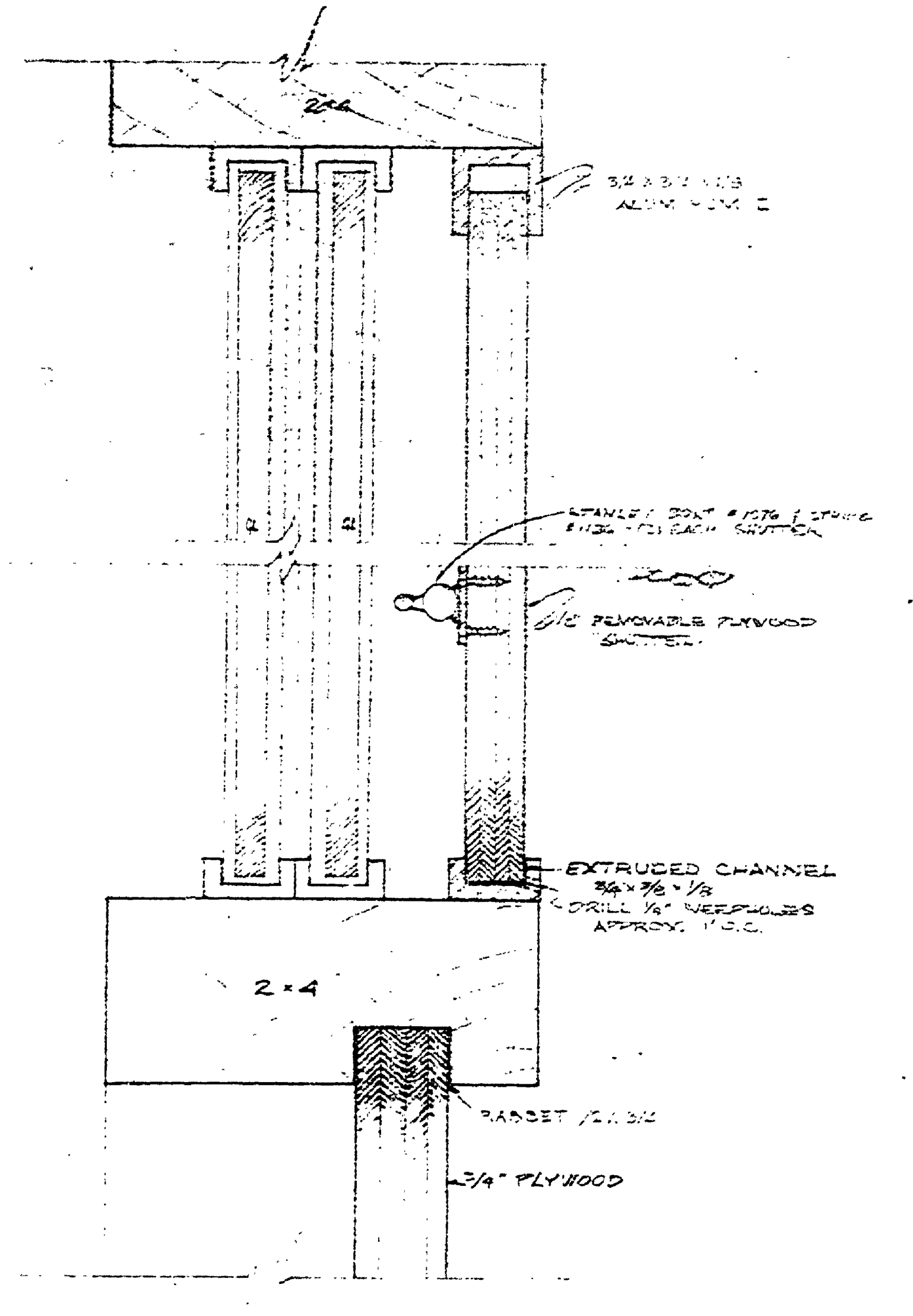
REAR  
1/2" = 1'-0"



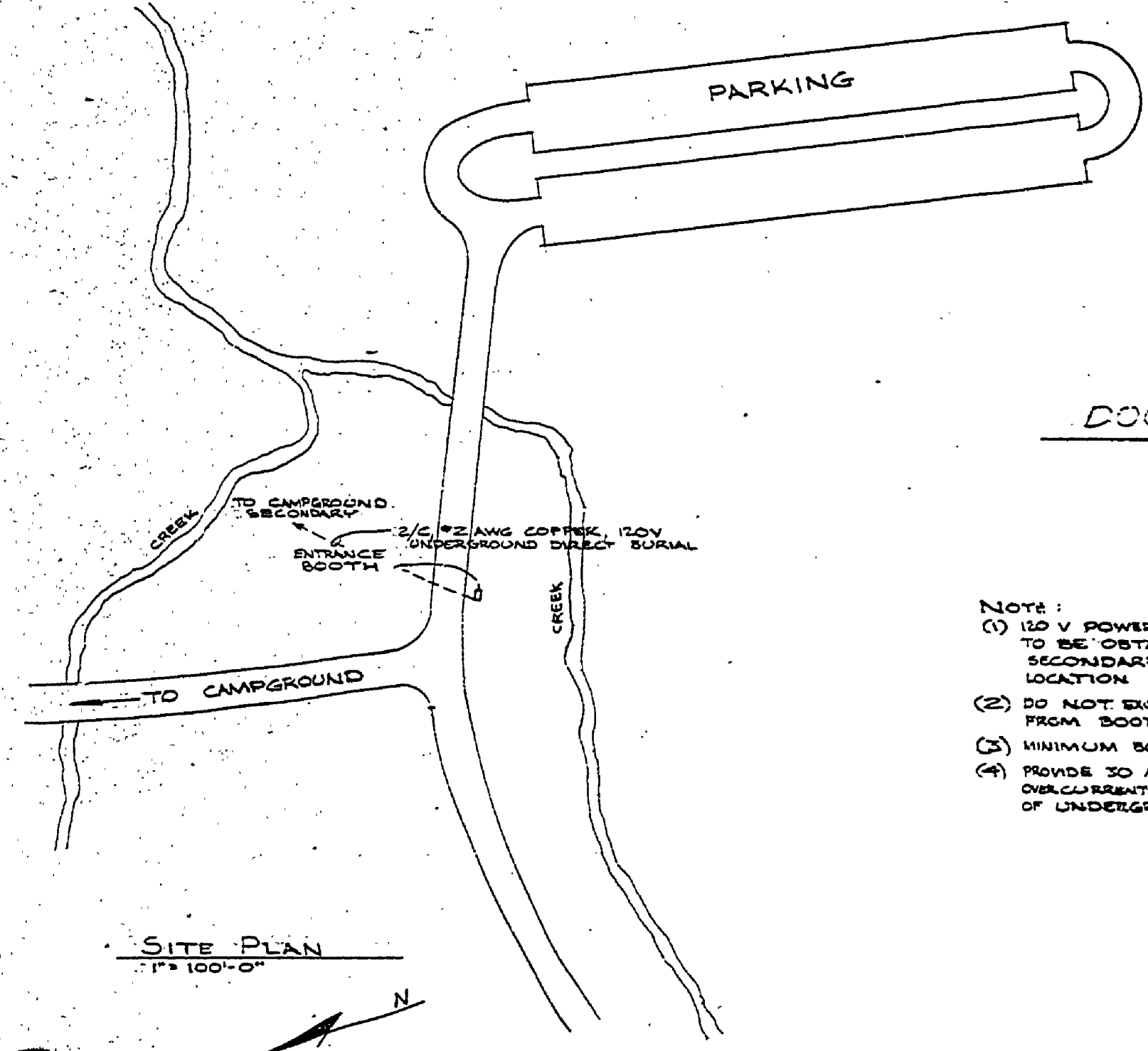
SIDE  
1/2" = 1'-0"



FRONT  
1/2" = 1'-0"



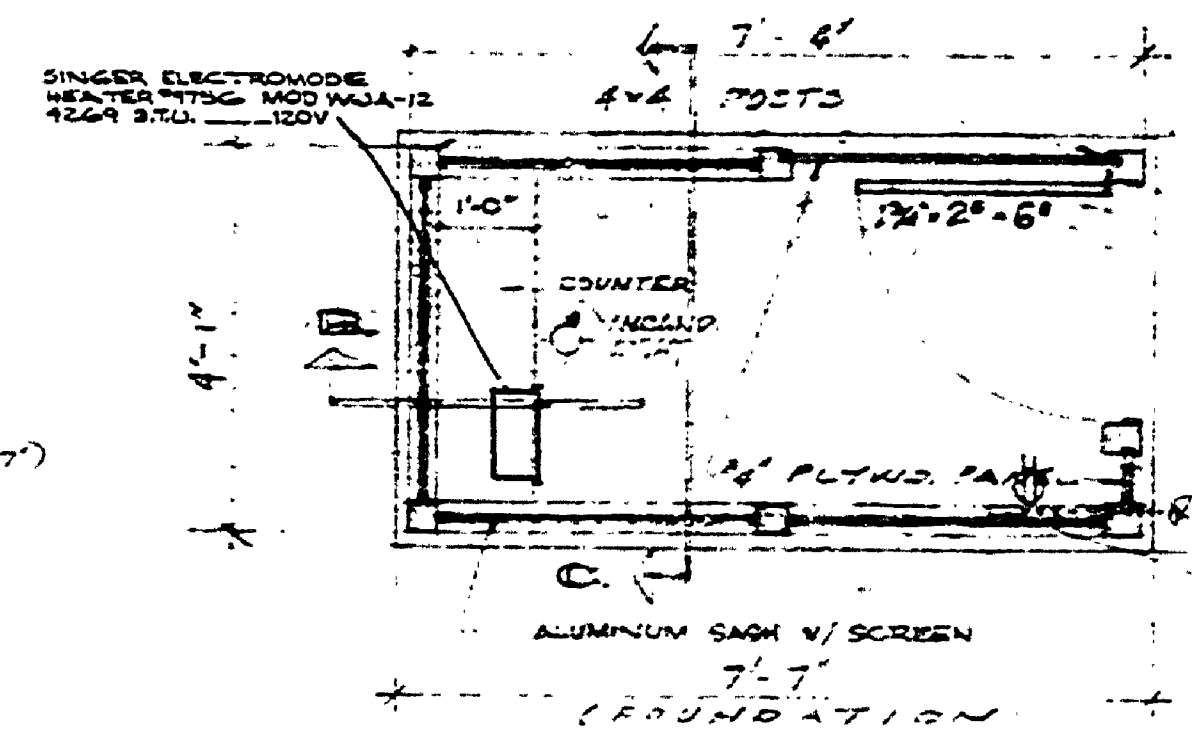
WINDOW SECTION  
FULL SIZE



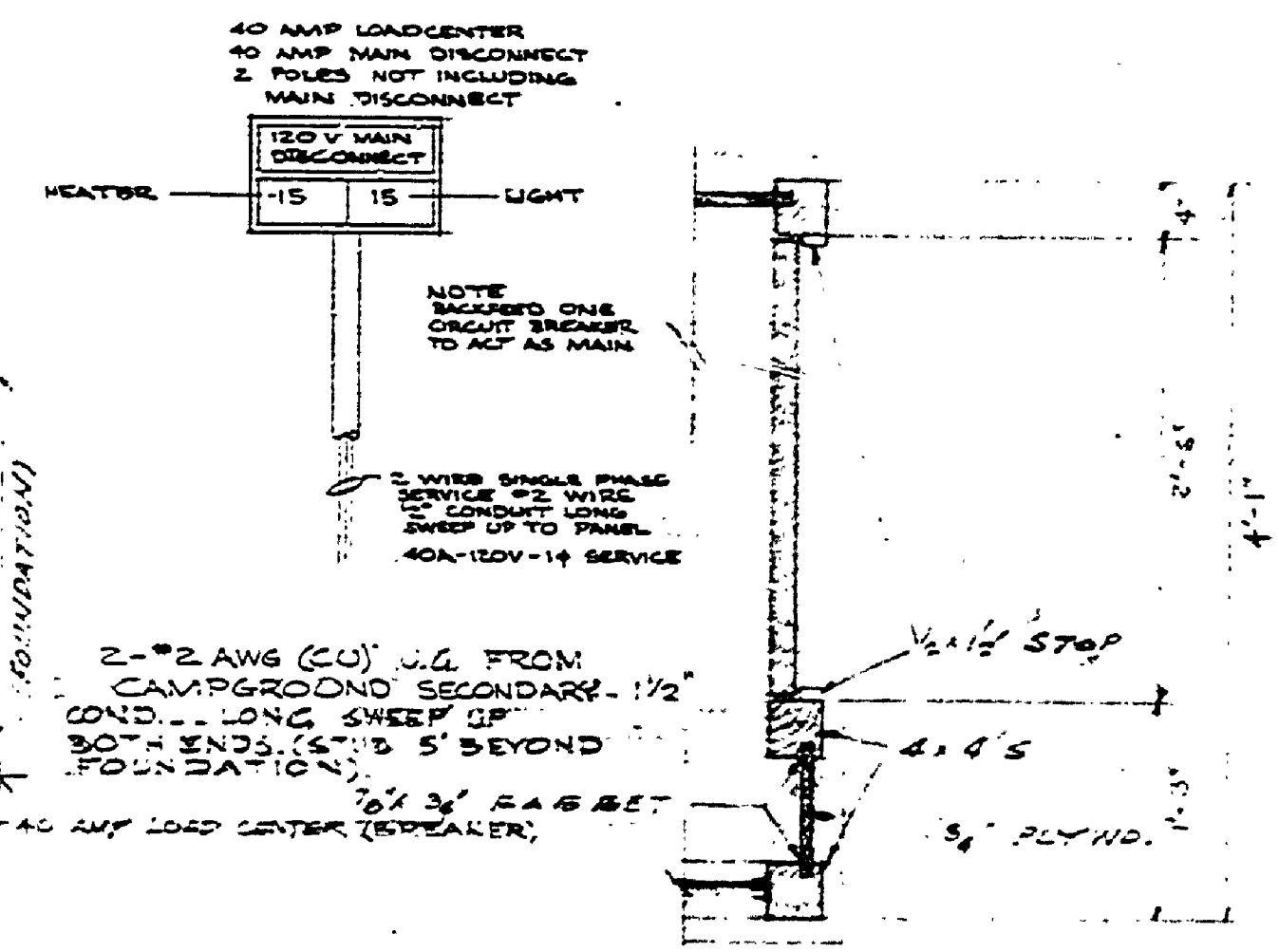
SITE PLAN  
1" = 100'-0"

- NOTES:
- (1) 120 V POWER FOR ENTRANCE BOOTH TO BE OBTAINED FROM CAMPGROUND SECONDARY AT NEAREST AVAILABLE LOCATION.
  - (2) DO NOT EXCEED 500' CIRCUIT LENGTH FROM BOOTH TO CAMPGROUND SUPPLY.
  - (3) MINIMUM BURY TO BE 30"
  - (4) PROVIDE 30 AMP FUSE OR CIRCUIT BREAKER DISCONNECT PROTECTION AT FEED END OF UNDERGROUND CIRCUIT.

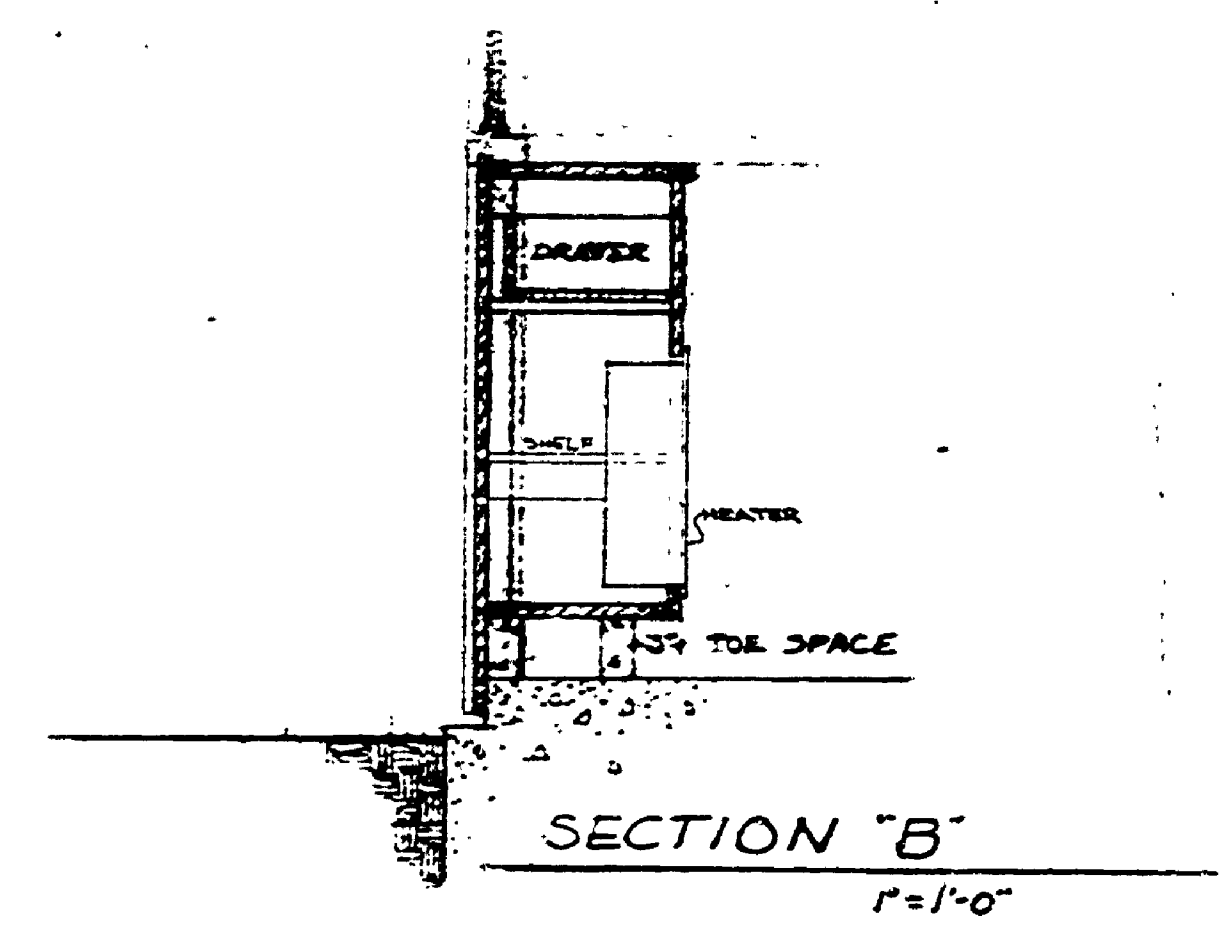
DOOR SECTION  
SCALE: 1/2" = 1'-0"



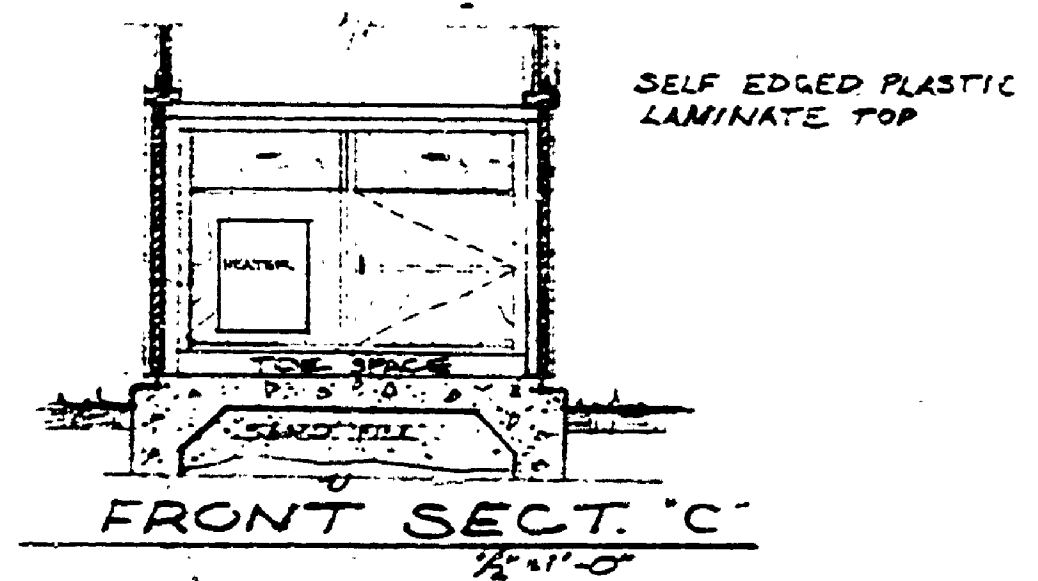
FOUNDATION PLAN  
SCALE: 1/2" = 1'-0"



SECT. A-A  
SCALE: 1/2" = 1'-0"



SECTION 'B'  
1/2" = 1'-0"



FRONT SECT. 'C'  
1/2" = 1'-0"

SURVEYED BY	DRAWN BY: SP	NO.	DATE	BY	REVISIONS	NO.	DATE	BY	REVISIONS
		1.				3.			
		2.				4.			

MICHIGAN DEPARTMENT OF CONSERVATION

STANDARD PLAN ENTRANCE BOOTH

HARRISVILLE STATE PARK AREA OR PARK (CONTACT STATION) PROJECT ENTRANCE BOOTH

BUILDING COMMITTEE APPROVAL	
BY: _____	DATE: _____
RECOMMENDED FOR APPROVAL: <i>W.C.</i> 3/10/75	DATE: _____
RECOMMENDED FOR APPROVAL: _____	DATE: _____
DIVISION, REGION APPROVAL	
BY: <i>O.G. Smith</i> 3/25/75	DATE: _____
ENGINEERING DIVISION	
APPROVED: <i>William C. ...</i> 3-26-75	DATE: _____
PROJECT NO. 24-1598	SHEET 1 OF 1
PLAN NO. A-108	