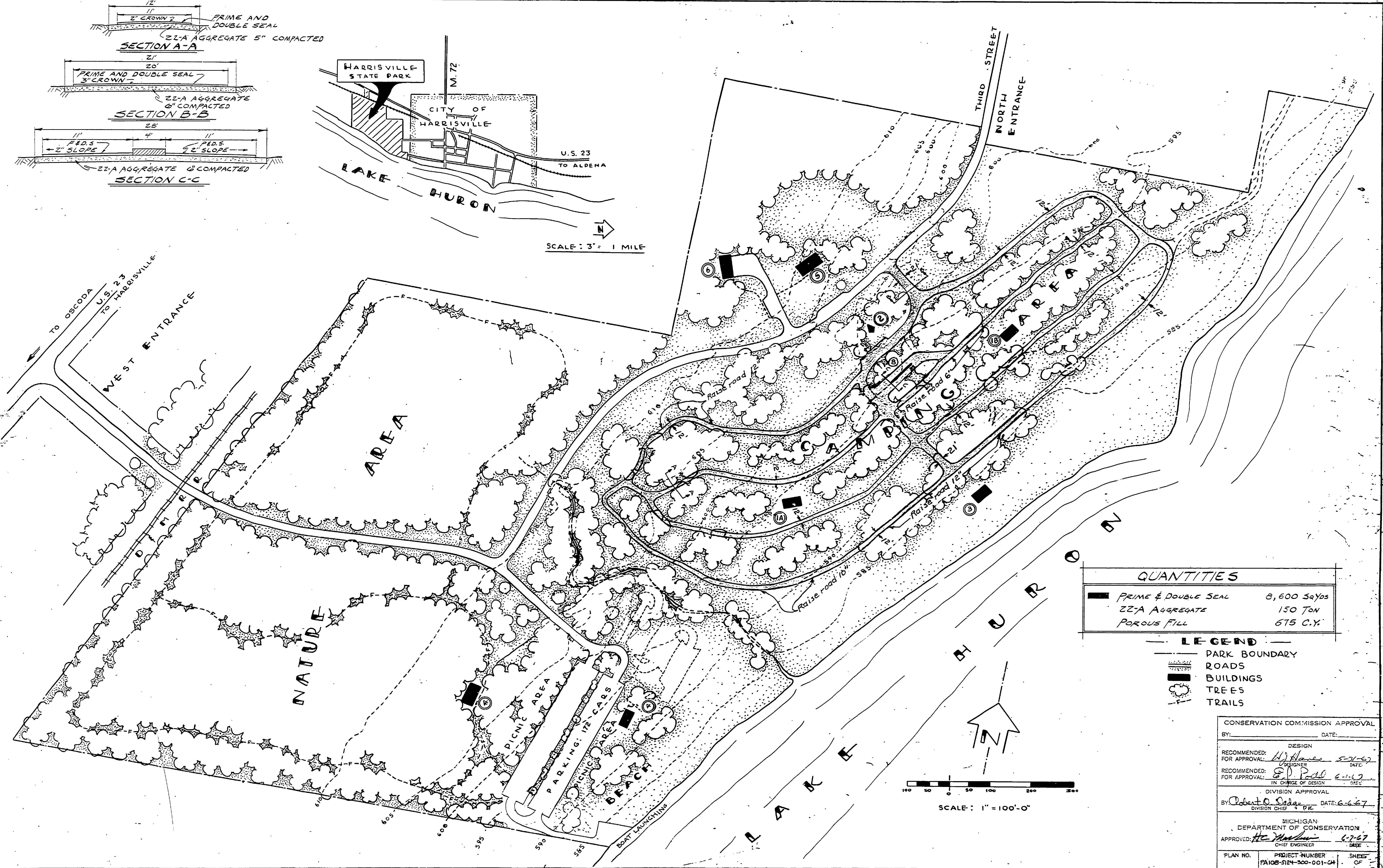
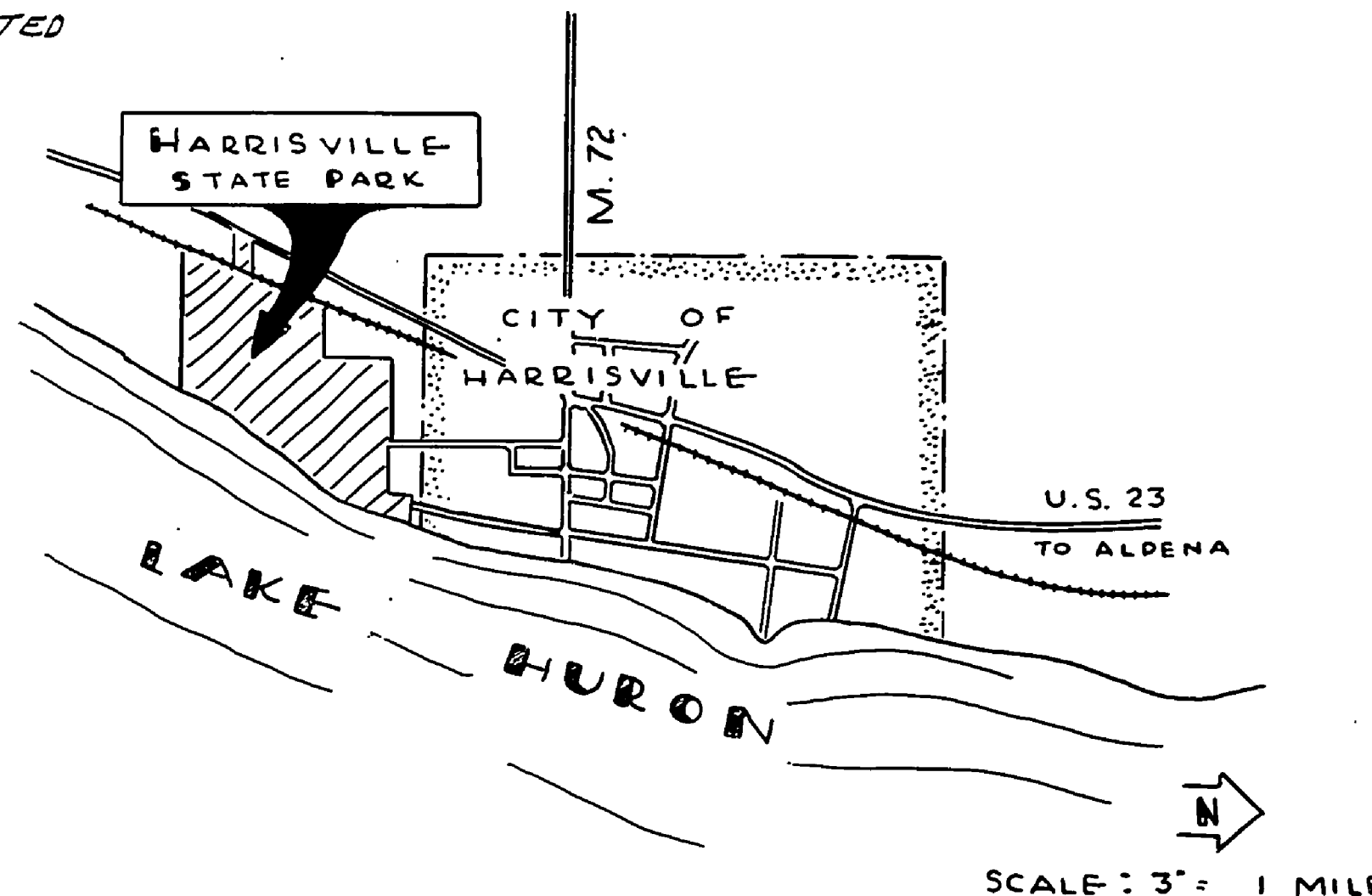
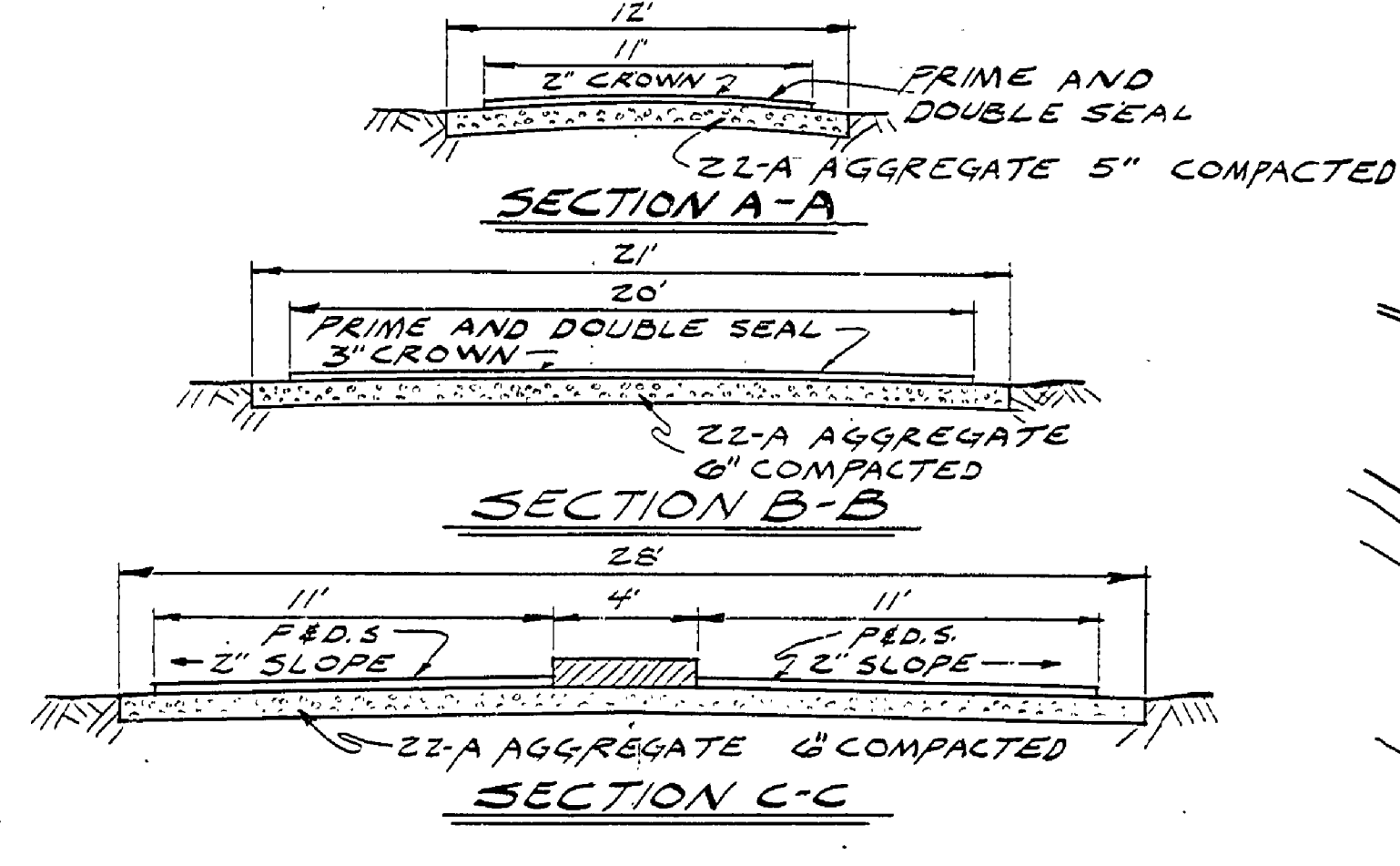
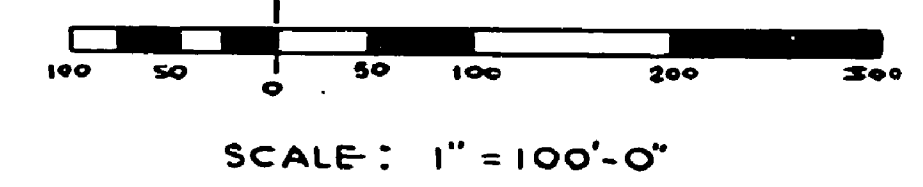


DRAWN BY F. G. F.	CHECKED BY	REVIEWED BY SECTIONS		DATE
		ARCHITECTURAL	LANDSCAPE	
DATE	NO.	REVISIONS		DATE
		BY	DESCRIPTION	
	1	4/14/66	L.L.L.	BUILDING DESIGNATION.
	2	10/11/61	W.A.	CAMPGROUND ROADS LOCATION OR ACTIVITIES TOILET SHOWER BLD.
	3			
	4			
	5			
	6			



QUANTITIES	
PRIME & DOUBLE SEAL	8,600 SqYds
ZZ-A AGGREGATE	150 TON
POROUS FILL	675 C.Y.

- LEGEND**
- PARK BOUNDARY
 - ROADS
 - BUILDINGS
 - TREES
 - TRAILS



CONSERVATION COMMISSION APPROVAL

BY: _____ DATE: _____

RECOMMENDED: _____ DESIGN DATE: _____

FOR APPROVAL: _____ DESIGNER DATE: _____

RECOMMENDED: _____ IN CHARGE OF DESIGN DATE: _____

FOR APPROVAL: _____ DATE: 6-26-67

DIVISION APPROVAL

BY: Robert C. Soder DATE: 6-26-67

DIVISION CHIEF

MICHIGAN DEPARTMENT OF CONSERVATION

APPROVED: _____ DATE: 6-27-67

CHIEF ENGINEER

PLAN NO. PROJECT NUMBER SHEET OF

PA108-5124-300-001-04 675 OF

MICHIGAN DEPARTMENT OF CONSERVATION

HARRISVILLE STATE PARK
BITUMINOUS SURFACING

SHEET NO. 1 OF 1
PLAN NO. E-115