

SCALE 1" = 50'

CONSTRUCTION NOTES

ALL UNDERGROUND SERVICE LINES WILL HAVE 24" MINIMUM COVER. ALL UNDERGROUND SERVICE LINES WILL HAVE 30" MIN. COVER.

PLACE CONCRETE WALKERS (9 DIA X 2' LONG) MARKED WITH "E" AT ALL UNDERGROUND CHANGE POINTS.

USE #6 GAGE COPPER WIRE THROUGHOUT ENTIRE SYSTEM, EXCEPT FOR THE 24" DIA. CABLE.

THE SAME THRESHOLD MAY BE USED WHERE PERMITTED. SECONDARY LINES SHALL BE PARALLEL TO EACH OTHER WITH A MINIMUM 12" VERTICAL SEPARATION.

THE PAD MOUNTED TRANSFORMER & CONCRETE BASE WILL BE SUPPLIED & INSTALLED BY GEORGIA POWER CO. THE CONTRACT WITH GEORGIA POWER CO. SHALL BE FURNISHED & INSTALLED UNDER THE CONTRACT. CONSTRUCTION DETAILS & DIMENSIONS WILL HAVE TO BE OBTAINED FROM GEORGIA POWER CO. BEFORE INSTALLATION.

PROVIDE WEATHERPROOF ENTRANCE JUNCTION RACK COMPLETE WITH VETER SOCKET, 400 AMP CIRCUIT BREAKER DISTRIBUTION PANELS TO BE SERVED BY MAIN DISTRIBUTION RACK TO BE INSTALLED ADJACENT TO PAD MOUNTED TRANSFORMER.

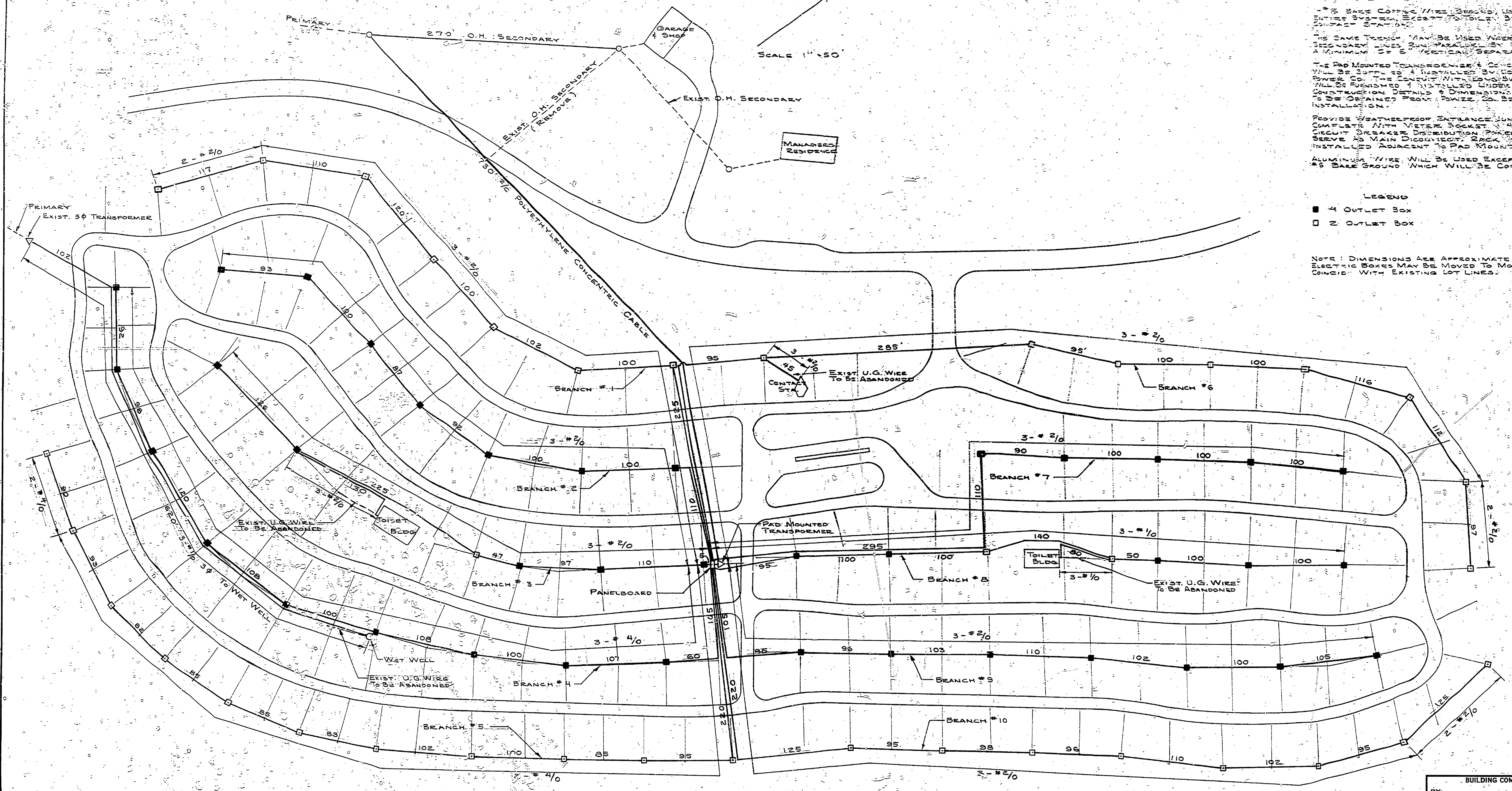
ALUMINUM WIRE WILL BE USED EXCEPT FOR THE #6 GAGE GROUND WHICH WILL BE COPPER.

LEGEND

■ 4 OUTLET BOX

□ 2 OUTLET BOX

NOTE: DIMENSIONS ARE APPROXIMATE ONLY. ELECTRIC BOXES MAY BE MOVED TO MORE CLOSELY COINCIDE WITH EXISTING LOT LINES.



BUILDING COMMITTEE APPROVAL	
BY: _____	DATE: _____
RECOMMENDED FOR APPROVAL: <i>J.E. B...</i> 11-26-69	ENGINEERING OR ARCHITECTURAL SUPERVISOR DATE
RECOMMENDED FOR APPROVAL: <i>S.L. P...</i> 11-28-69	PROJECT AND PLAN COORDINATOR DATE
DIVISION/REGION APPROVAL	
BY: <i>Robert O. D...</i> 2-9-70	DATE
DIVISION CHIEF/REGIONAL MANAGER ENGINEERING DIVISION	
APPROVED: <i>H.C. Mc...</i> 2-10-70	DATE
CHIEF ENGINEER	

SURVEYED BY	DRAWN BY J. TPMA	11-69	NO.	DATE	BY	REVISIONS	NO.	DATE	BY	REVISIONS	MICHIGAN DEPARTMENT OF NATURAL RESOURCES	UNDERGROUND ELECTRICAL DISTRIBUTION SYSTEM	HARRISVILLE STATE PARK AREA OR PARK
DESIGNED BY R. H. MERRILL	CHECKED BY	11-69	1.	JAN. 70	J.Y.	TRANSFORMER LOCATION CHANGED. SANITATION STA. ADDED.	3.					SHEET TITLE	PROJECT
			2.				4.						PLAN NO. E-117

PROJECT NO. 1048	SHEET 1 OF 2	PLAN NO. E-117
------------------	--------------	----------------