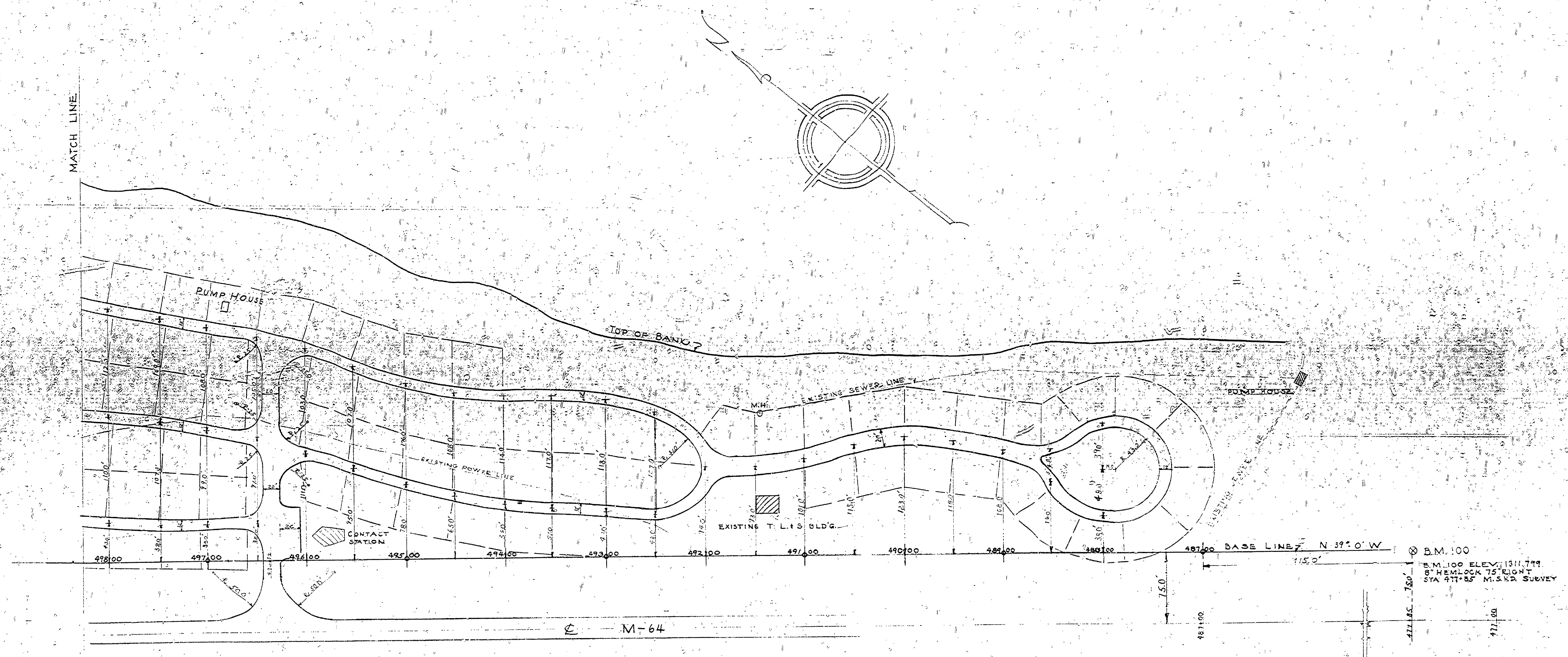


REVISIONS	NO	DATE	BY
1			
2			
3			
4			
5			
6			

APPROVED BY	DATE
<i>H.C. Mc...</i>	11-12-59
ASSISTANT CHIEF IN CHARGE	DATE
<i>J.R. ...</i>	11-11-59

REVIEWED BY SECTIONS	DATE
ARCHITECTURAL	11-12-59
ENGINEERING	11-12-59
LANDSCAPE	11-11-59

TRACED BY	DATE
<i>J.R. ...</i>	Oct 12, 1959



NOTE PERMANENT BASE LINE SET 75.0' EAST OF M-64 WITH IRON PIPE AT 200.0' INTERVALS BEGINNING WITH HWY STA. 487+00

105 CAMP SITES (TOTAL)

MICHIGAN DEPARTMENT OF CONSERVATION PARKS AND RECREATION DIVISION

GOGBIC LAKE STATE PARK CAMPGROUND LAYOUT PLAN SCALE 1" = 50' SEPT 1959

SHEET NO. 3 OF 4 PLAN NO. L-102