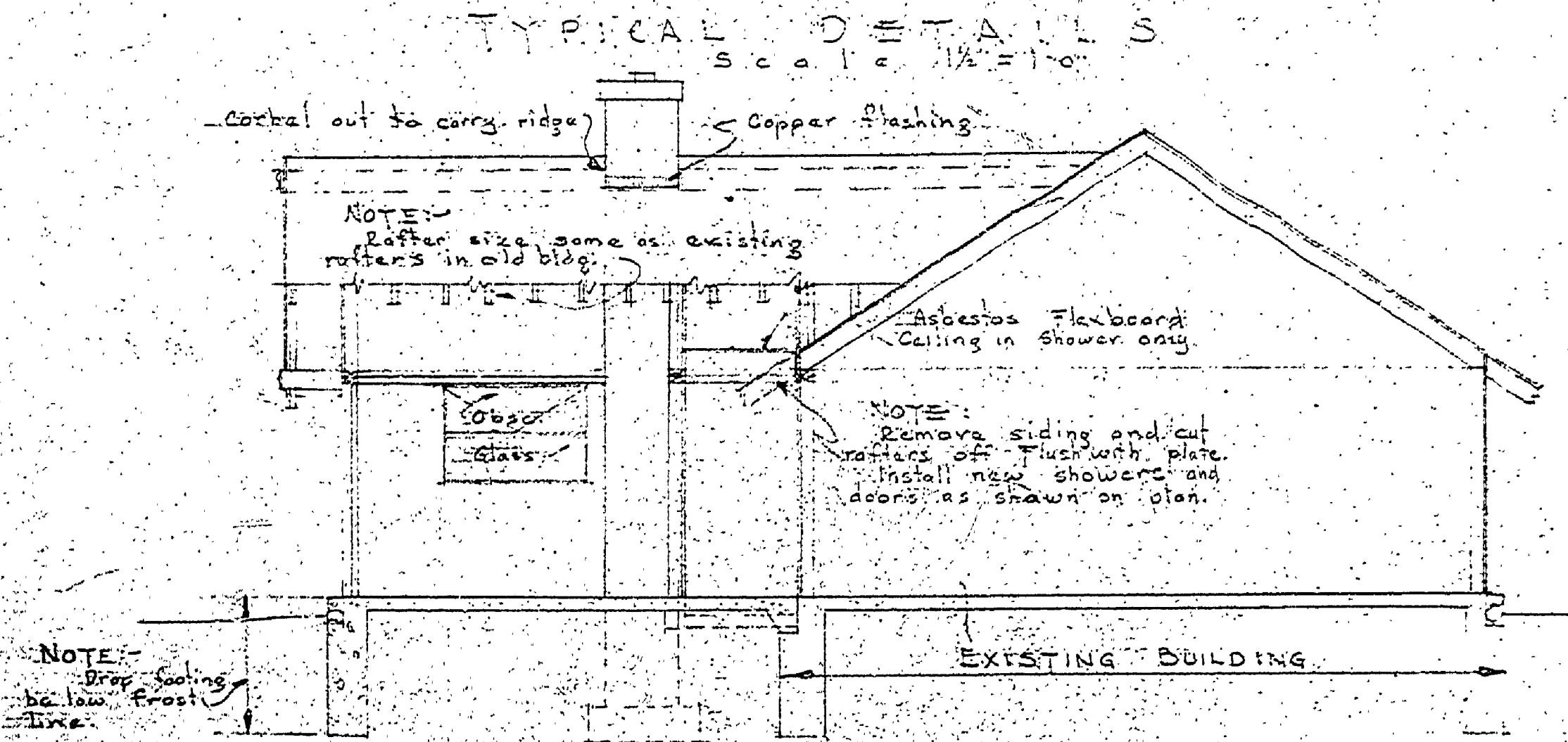
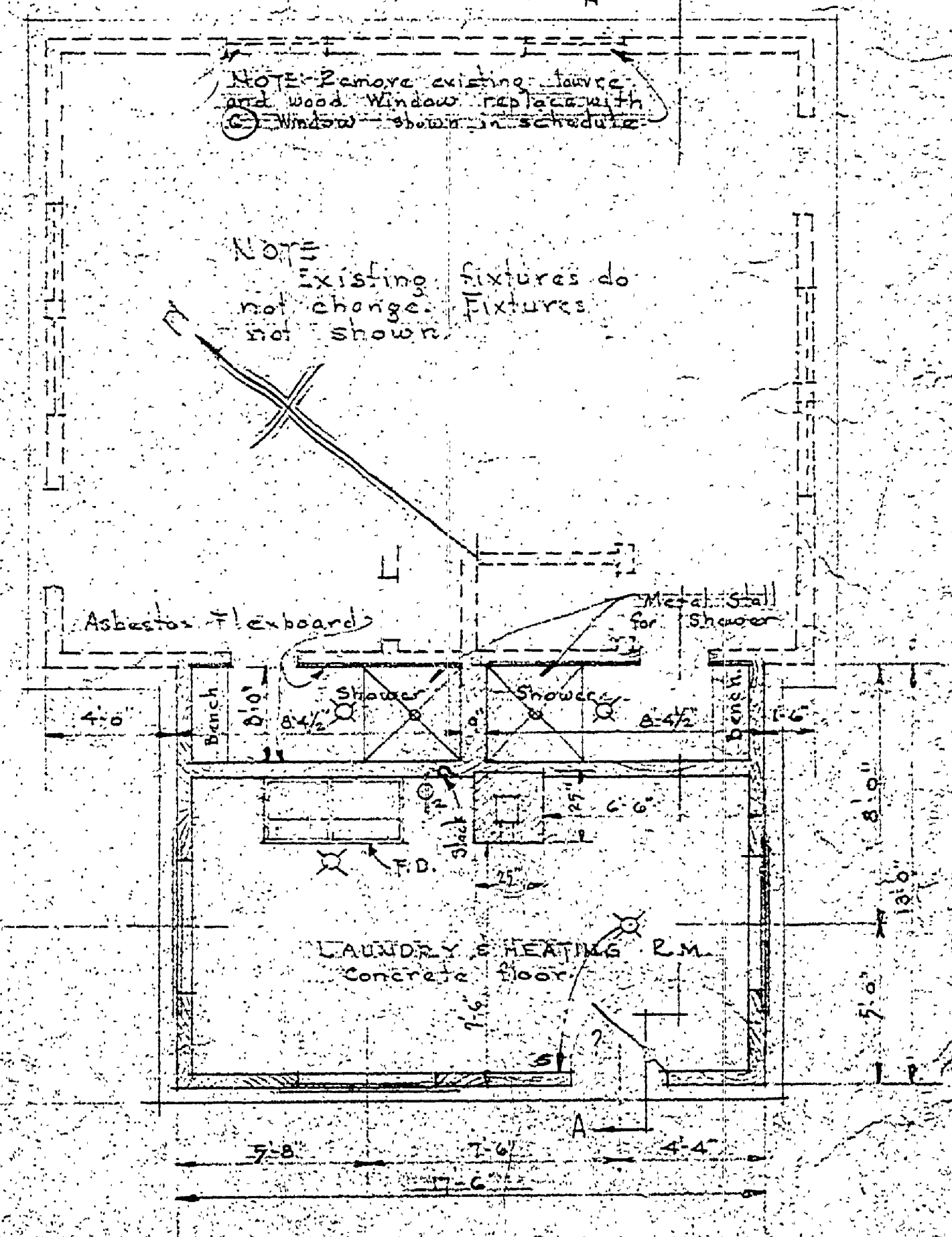
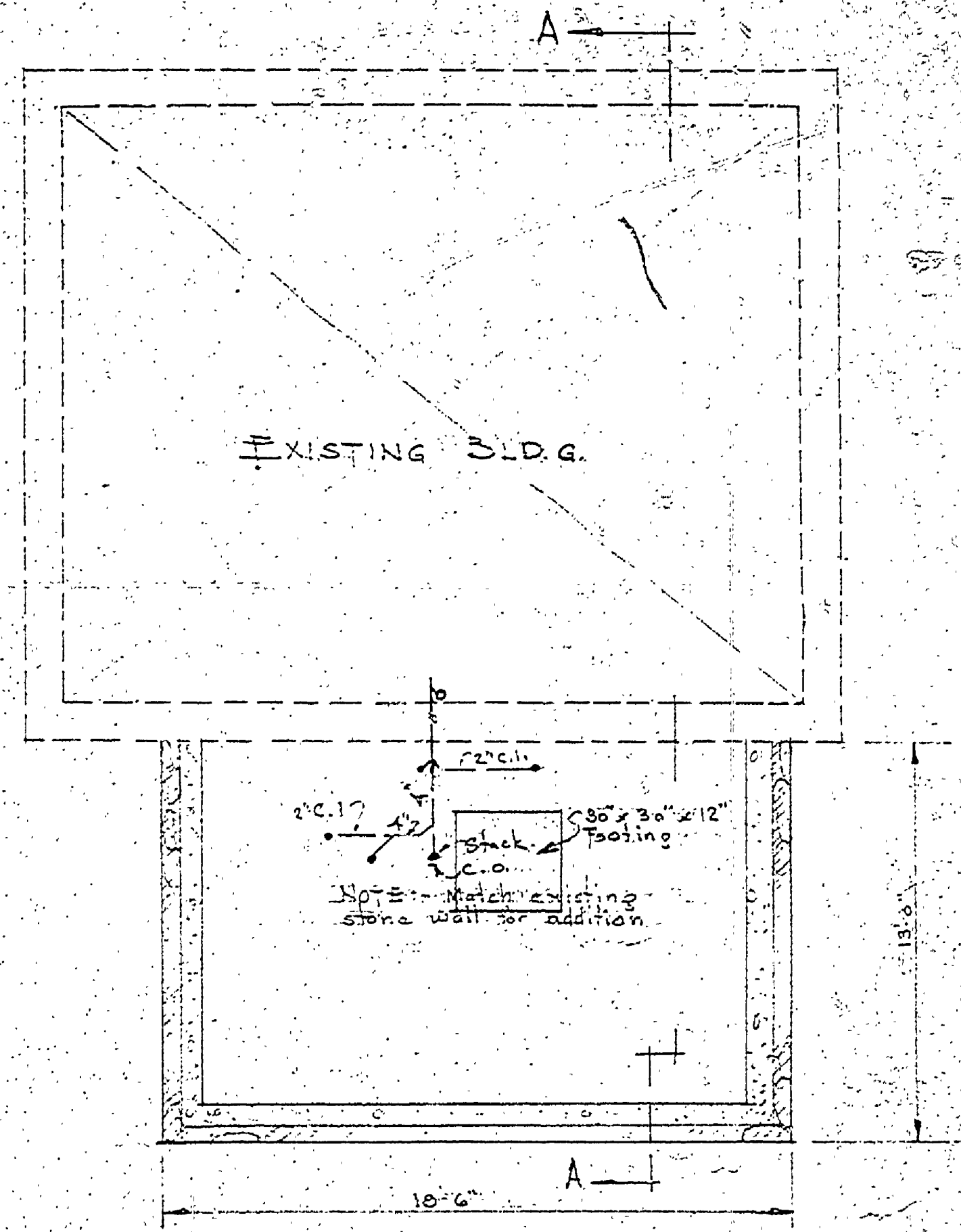
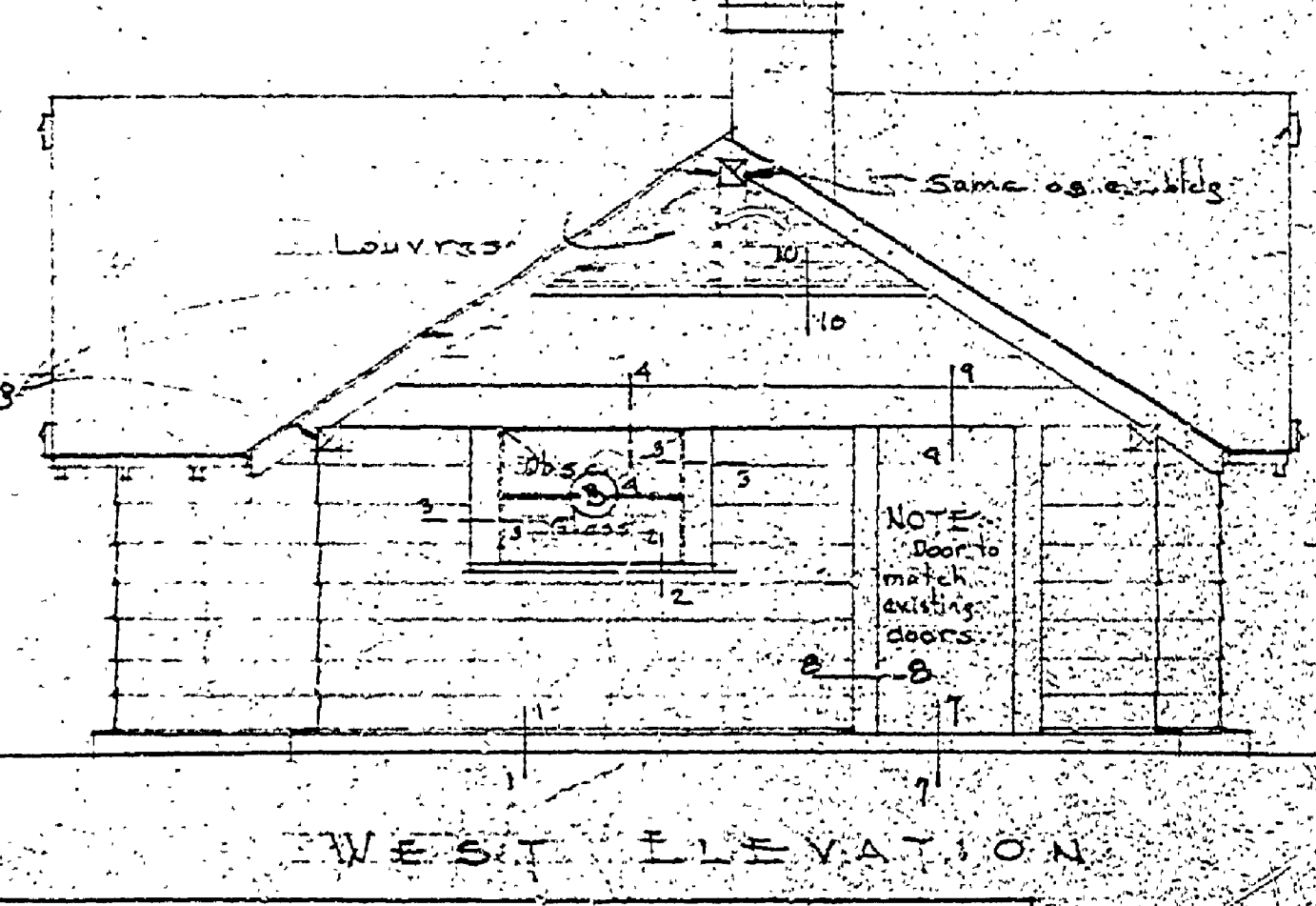
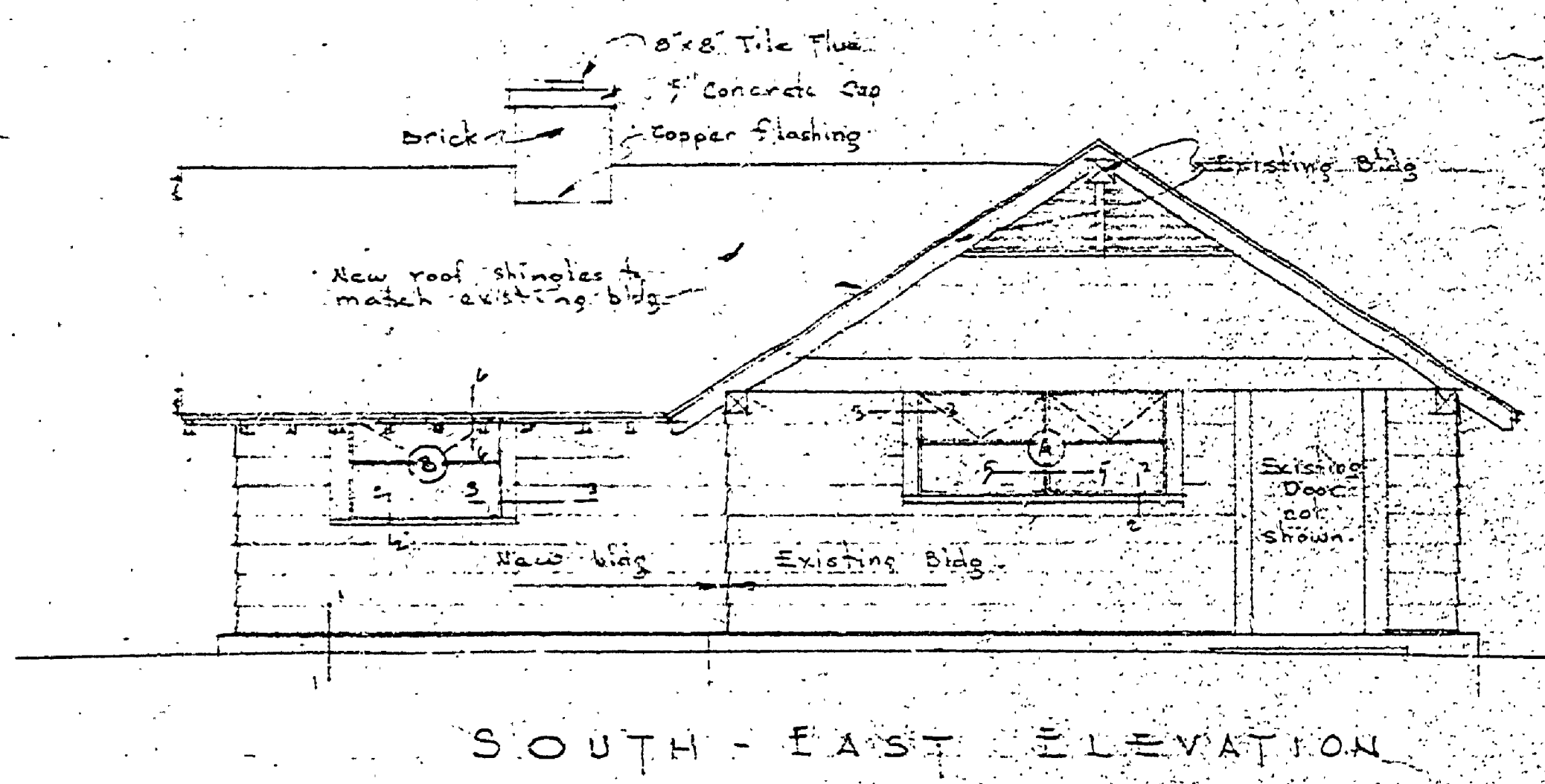
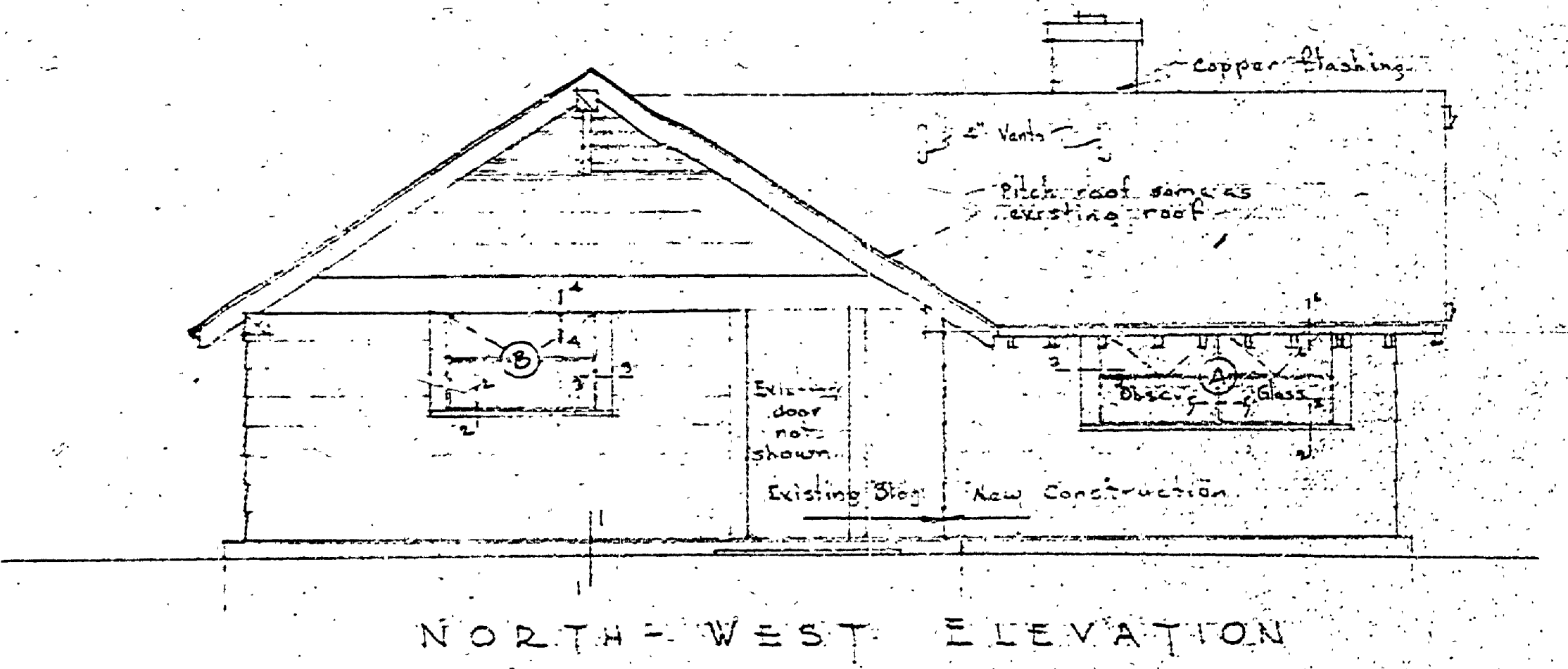
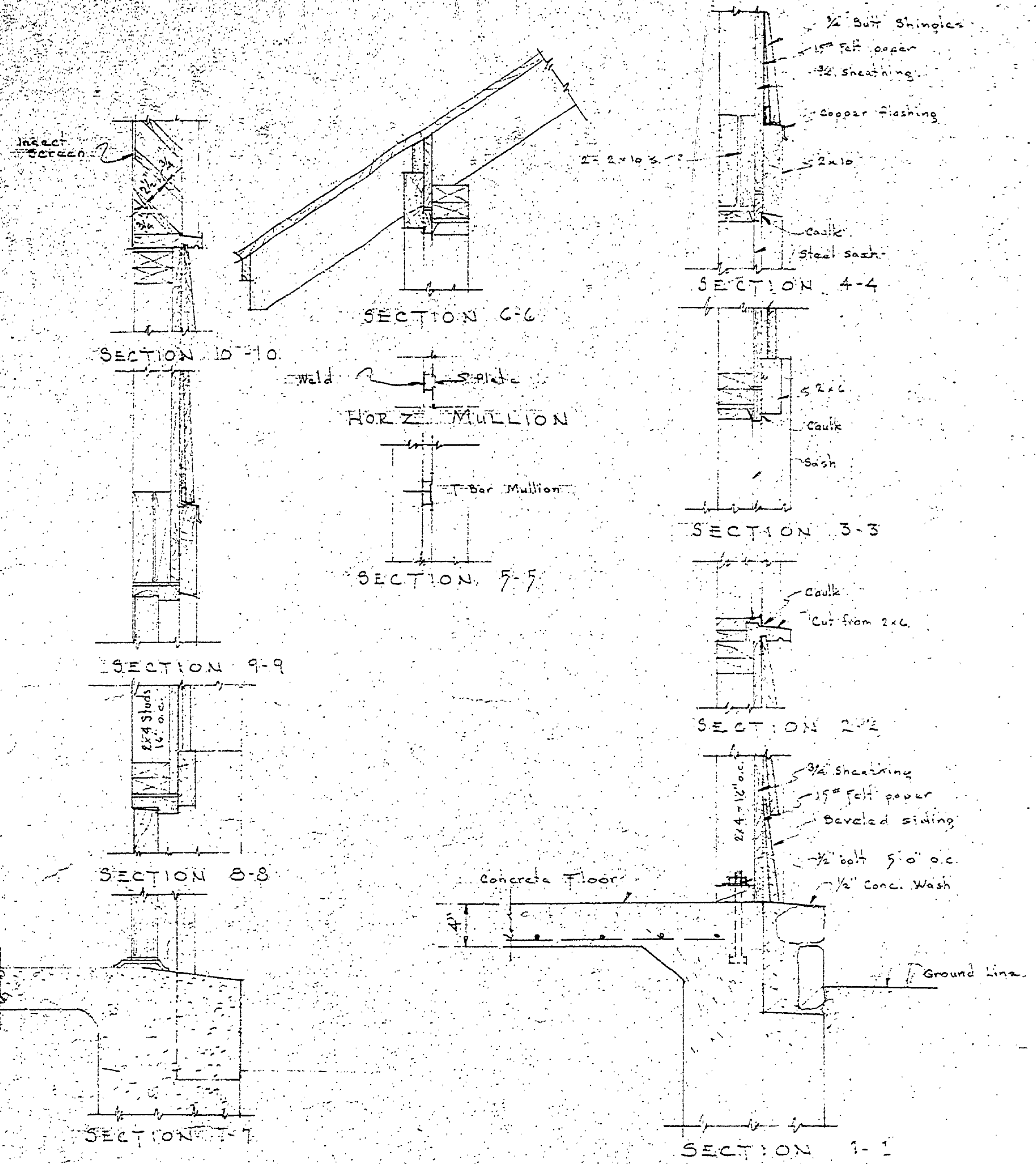


NO.	DATE	BY	REVISIONS
1	12/1/48	J.P.R.	1. Initial window and altered window
2	1/2/49	J.P.R.	2. Change window size
3	1/2/49	J.P.R.	3. Change window size
4	1/2/49	J.P.R.	4. Change window size
5	1/2/49	J.P.R.	5. Change window size
6	1/2/49	J.P.R.	6. Change window size

DATE	APPROVED BY	DATE	REVIEWED BY SECTIONS
12/1/48	J.P.R.	12/1/48	J.P.R.
1/2/49	J.P.R.	1/2/49	J.P.R.
1/2/49	J.P.R.	1/2/49	J.P.R.

DATE	BY	REVISIONS
12/1/48	J.P.R.	1. Initial window and altered window
1/2/49	J.P.R.	2. Change window size
1/2/49	J.P.R.	3. Change window size
1/2/49	J.P.R.	4. Change window size
1/2/49	J.P.R.	5. Change window size
1/2/49	J.P.R.	6. Change window size



NOTE: Size of all material same as existing bldg. and addition to be similar to old toilet bldg.

NOTE: Sash catalog numbers are Cecco. Architectural Perspectives Window Co. Sash Vent. Bottom Sash Fixed.

NO.	DATE	BY	REVISIONS
1	12/1/48	J.P.R.	1. Initial window and altered window
2	1/2/49	J.P.R.	2. Change window size
3	1/2/49	J.P.R.	3. Change window size
4	1/2/49	J.P.R.	4. Change window size
5	1/2/49	J.P.R.	5. Change window size
6	1/2/49	J.P.R.	6. Change window size

MICHIGAN DEPARTMENT OF CONSERVATION STATE PARKS DIVISION

GOEBIC LAKE STATE PARK ADDITION TO TOILET BLDG. CONSERVATION TOILET SHOWERS & LAUNDRY

SHEET NO. 1 OF 1 PLAN NO. A-103