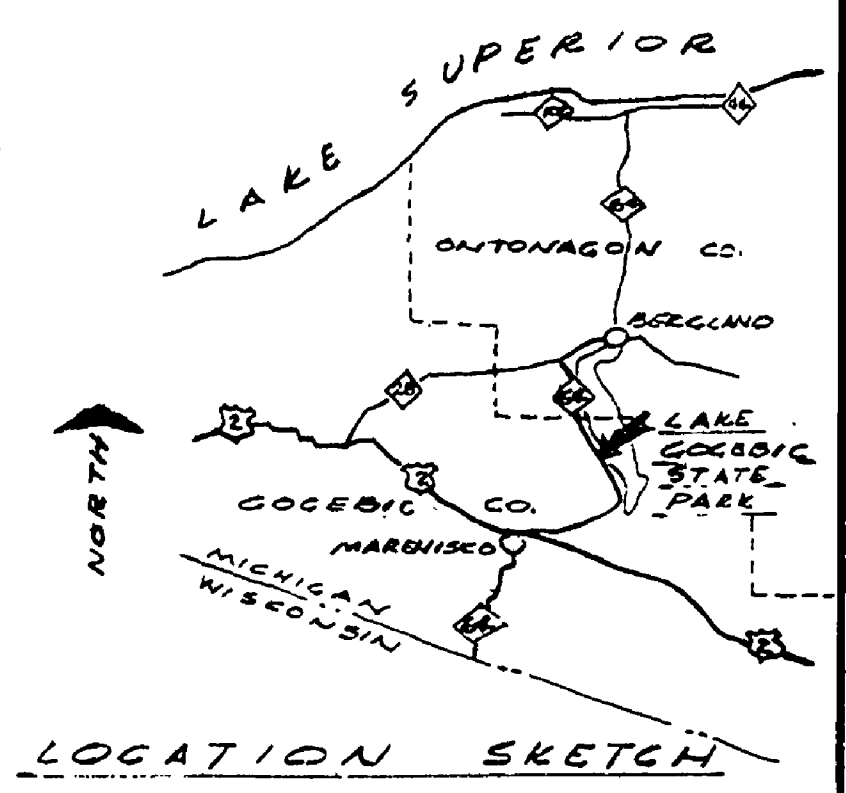
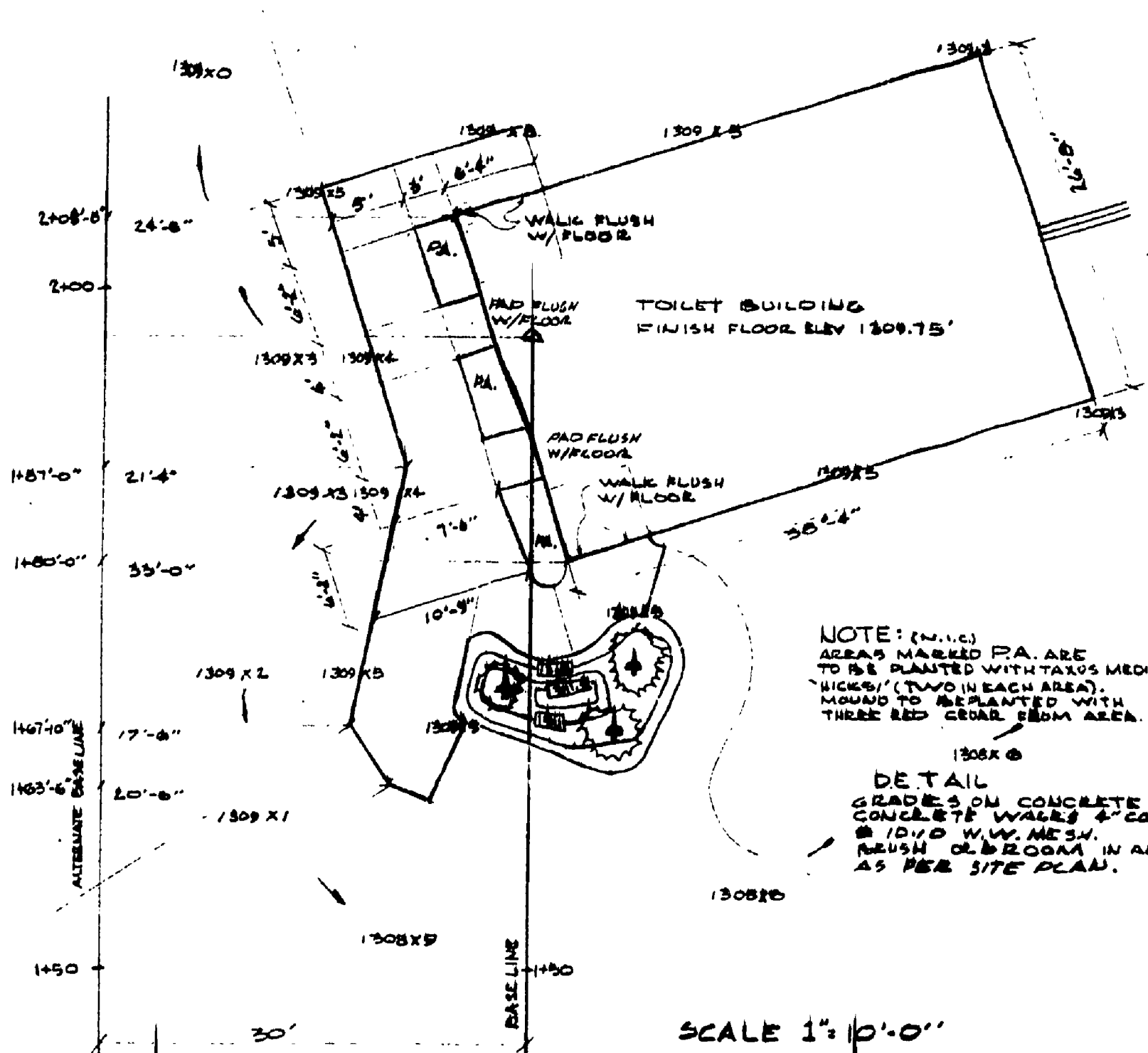
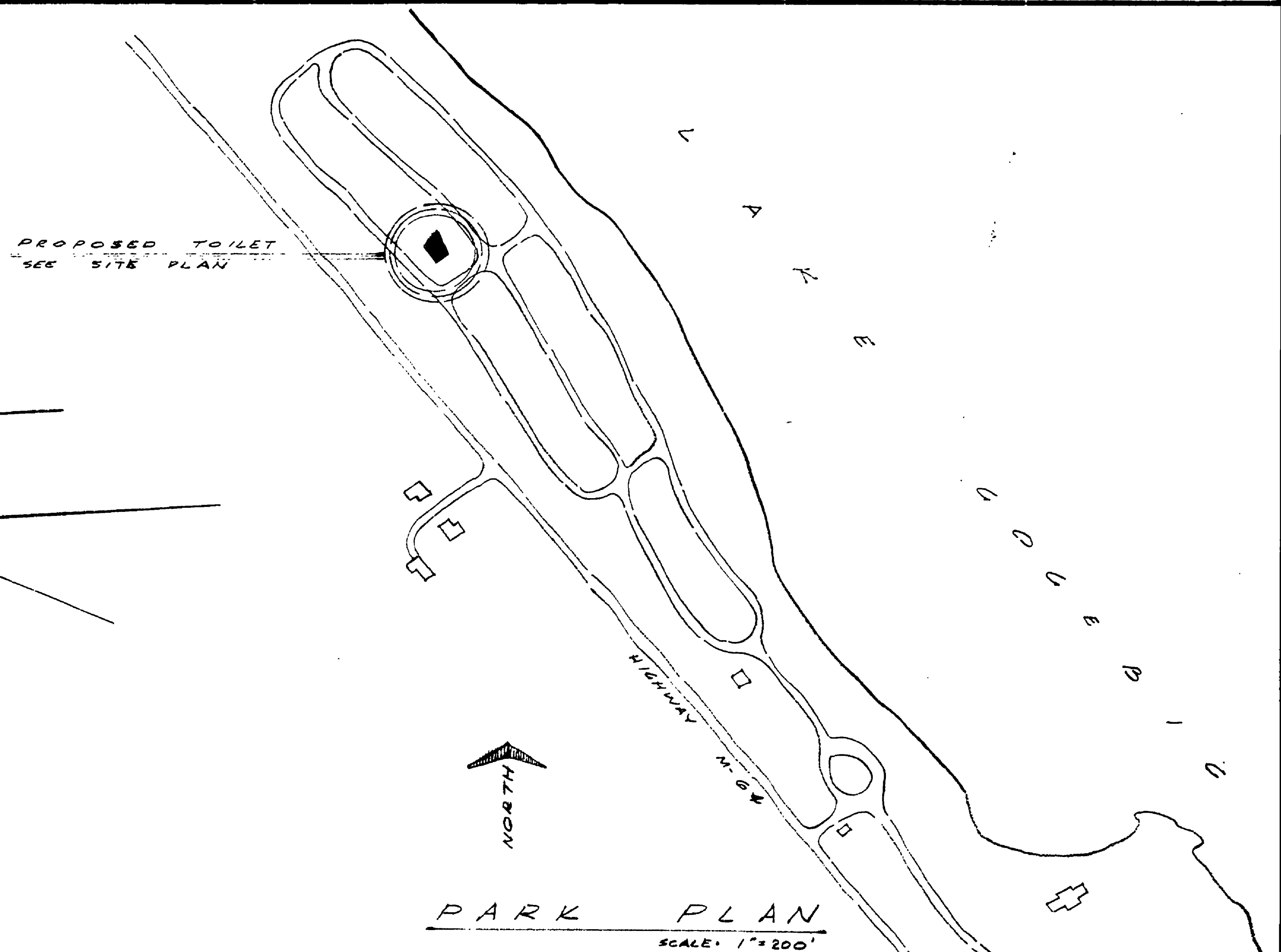
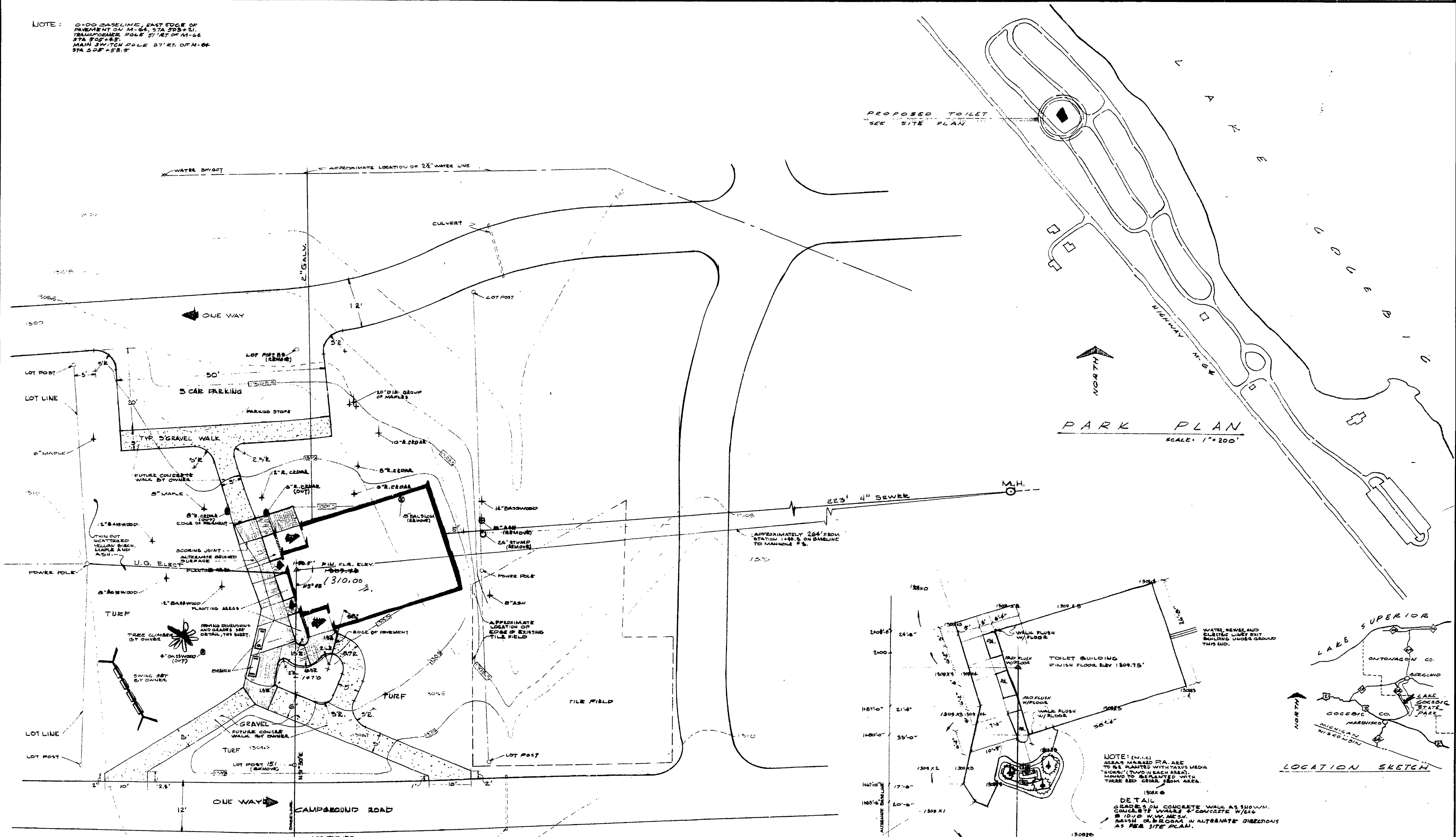


NOTE: 0+00 BASELINE, EAST EDGE OF PAVEMENT ON M-66 STA 508+51. TRANSFORMER POLE 57' RT OF M-66 STA 508+45. MAIN SWITCH POLE 87' RT. OF M-66 STA 508+58.5



Samuel A. Miller  
IN CHARGE, PARK DESIGN  
4/19/65  
DATE

Robert O. Dodge  
CHIEF, PARKS DIVISION  
7-19-65  
DATE

SCALE 1"=10'-0"

SCALE 1"=10'-0"

| REVISIONS                 | NO.     | DATE        | BY                  | REVISIONS | NO. | DATE    | BY       | REVISIONS              |
|---------------------------|---------|-------------|---------------------|-----------|-----|---------|----------|------------------------|
| DESIGNED BY R. C. & D. H. | 4/11/65 | DATE        | CHECKED BY L. M. C. | 4-68      | 1.  | 4/15/68 | R. G. H. | RELOCATION TO NEW SITE |
| DRAWN BY E. HELMIC        | 4/18/68 | NO. DATE BY |                     |           |     |         |          |                        |
| SURVEYED BY R. BRATSCHI   |         |             |                     |           |     |         |          |                        |