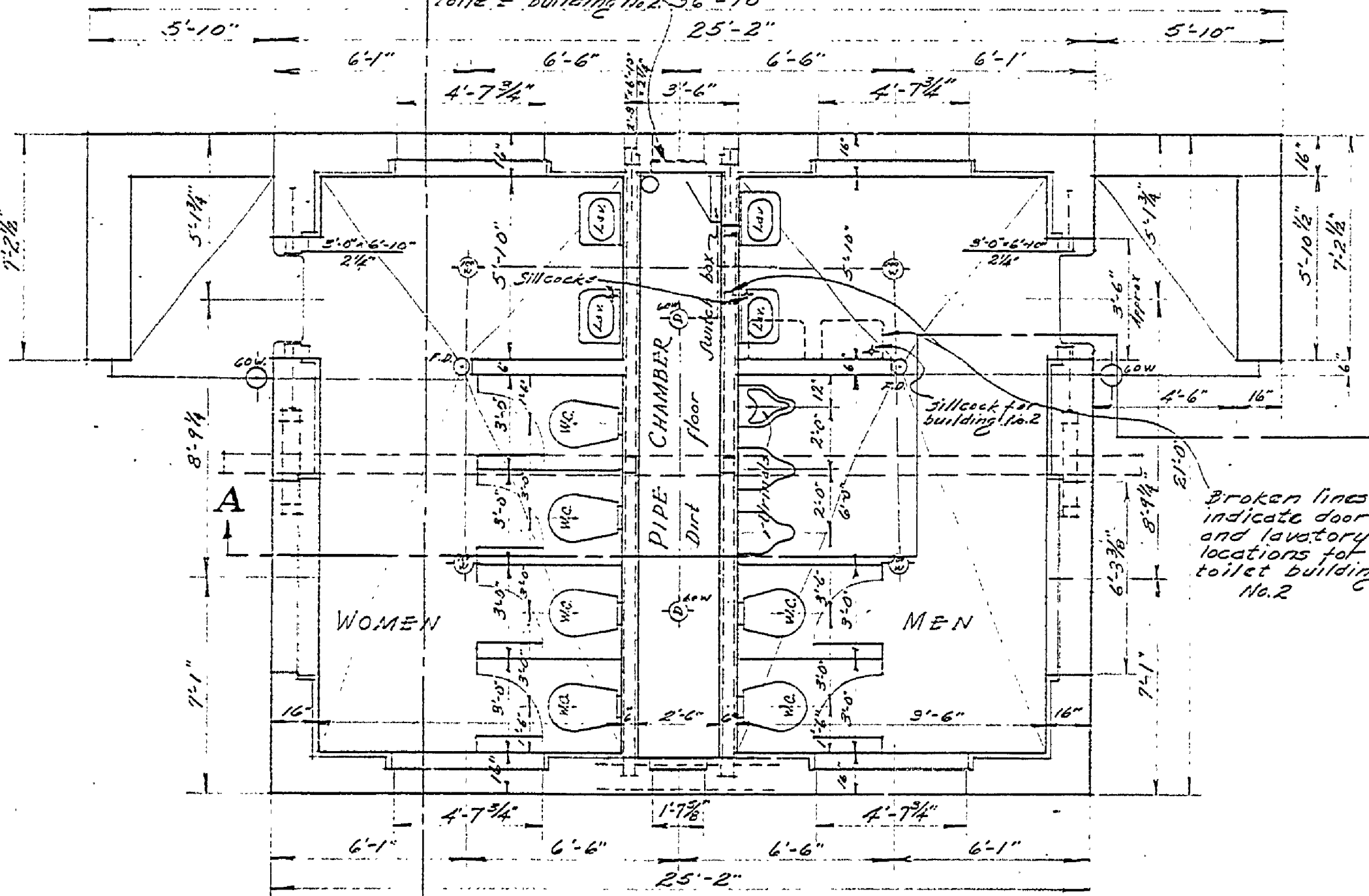


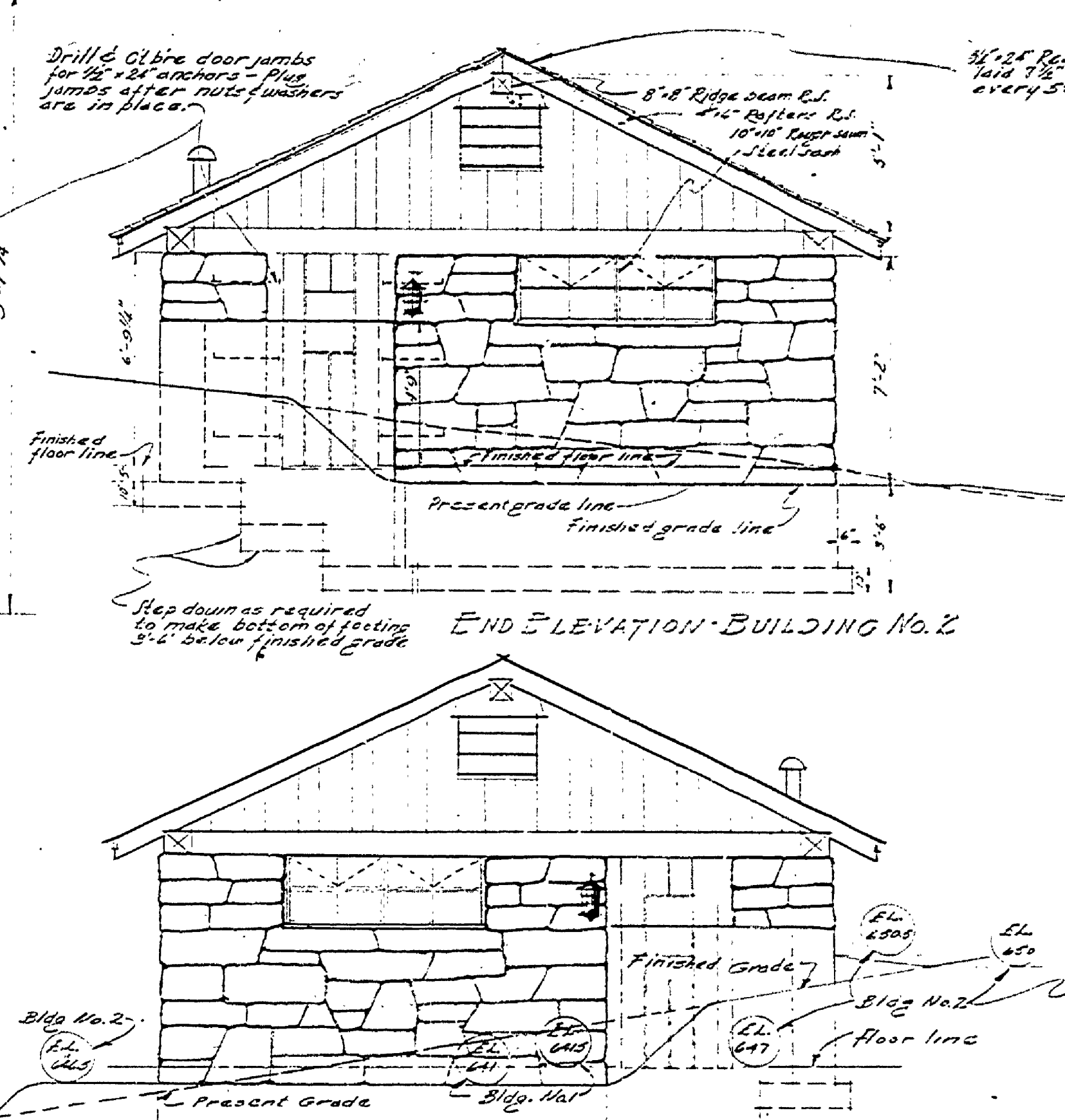
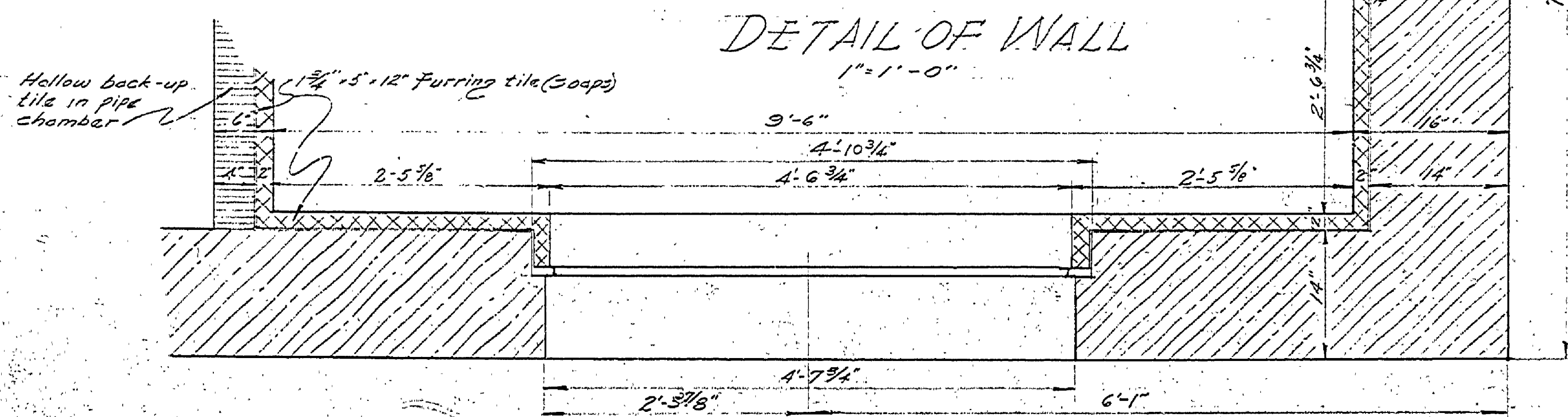
FOUNDATION PLAN & PLUMBING LAYOUT
SCALE 1/4" = 1'-0"

Floors to have #4 Gal. Steel mesh reinforcing in bottom of slabs
Broken lines indicate window for toilet building No. 2

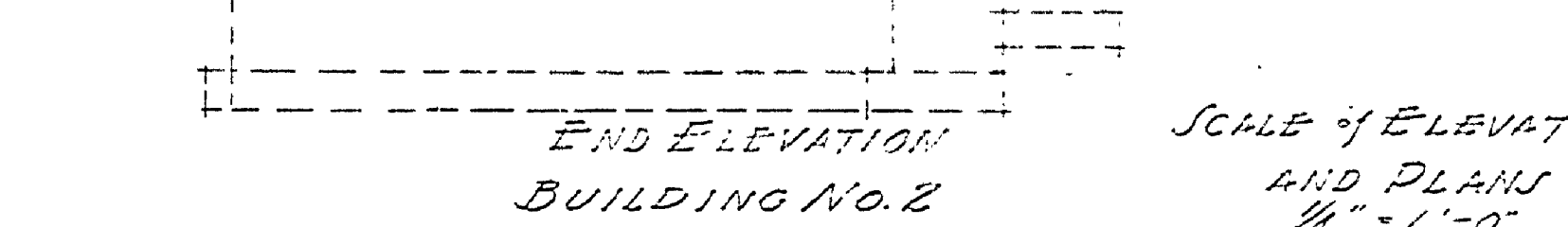


FLOOR PLAN

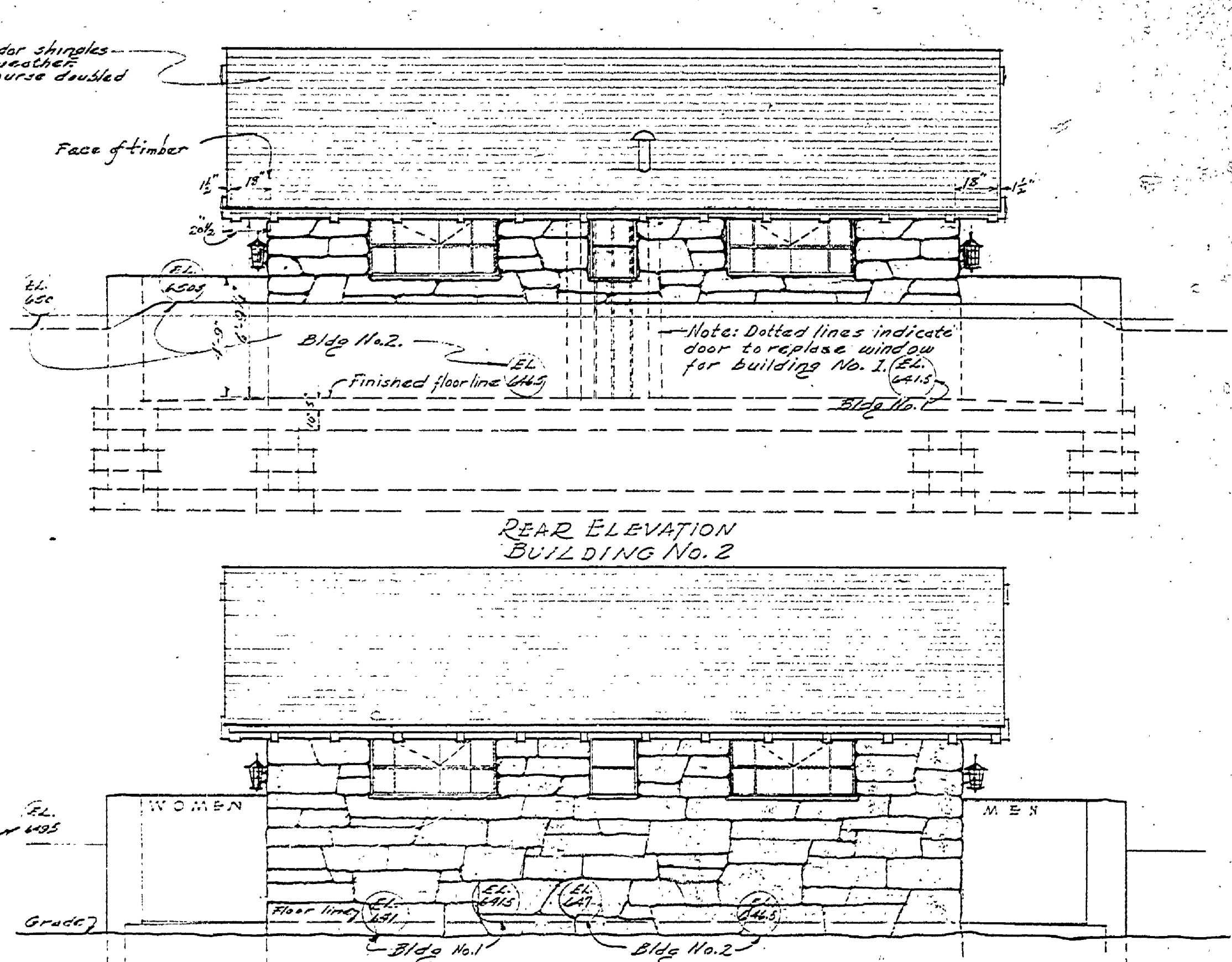
DETAIL OF WALL
1" = 1'-0"



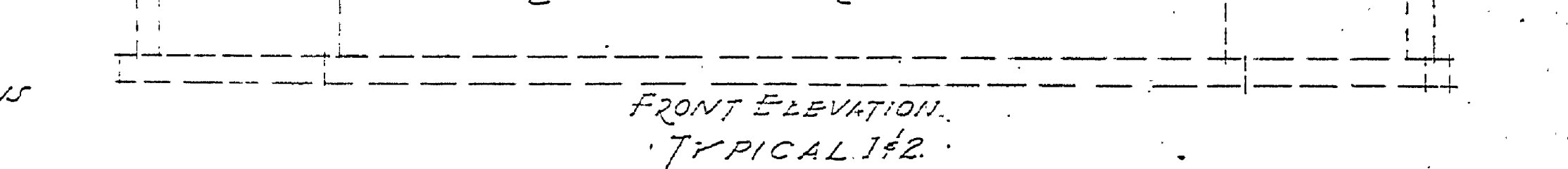
END ELEVATION BUILDING NO. 2



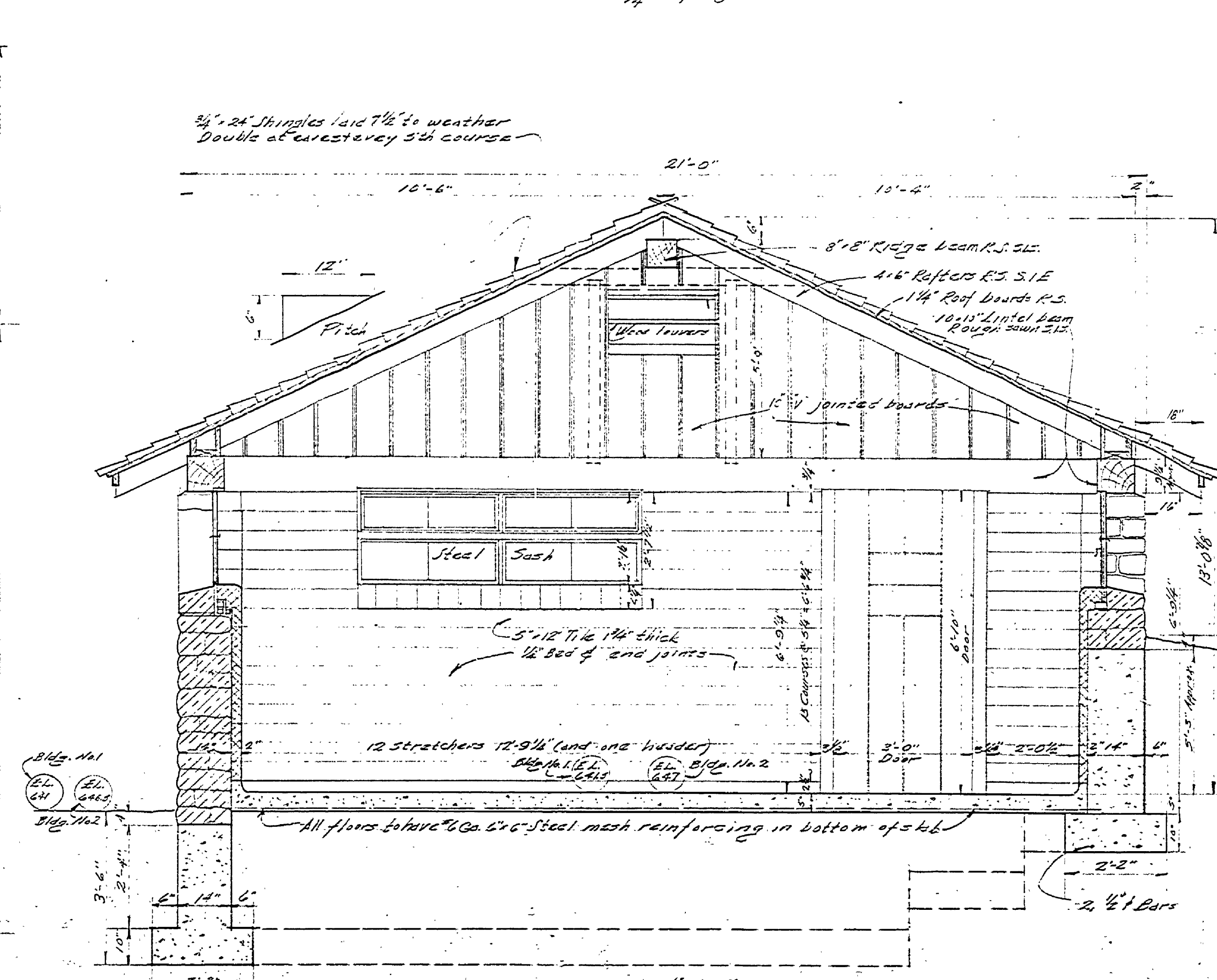
END ELEVATION BUILDING NO. 2
SCALE OF ELEVATIONS AND PLANS
1/4" = 1'-0"



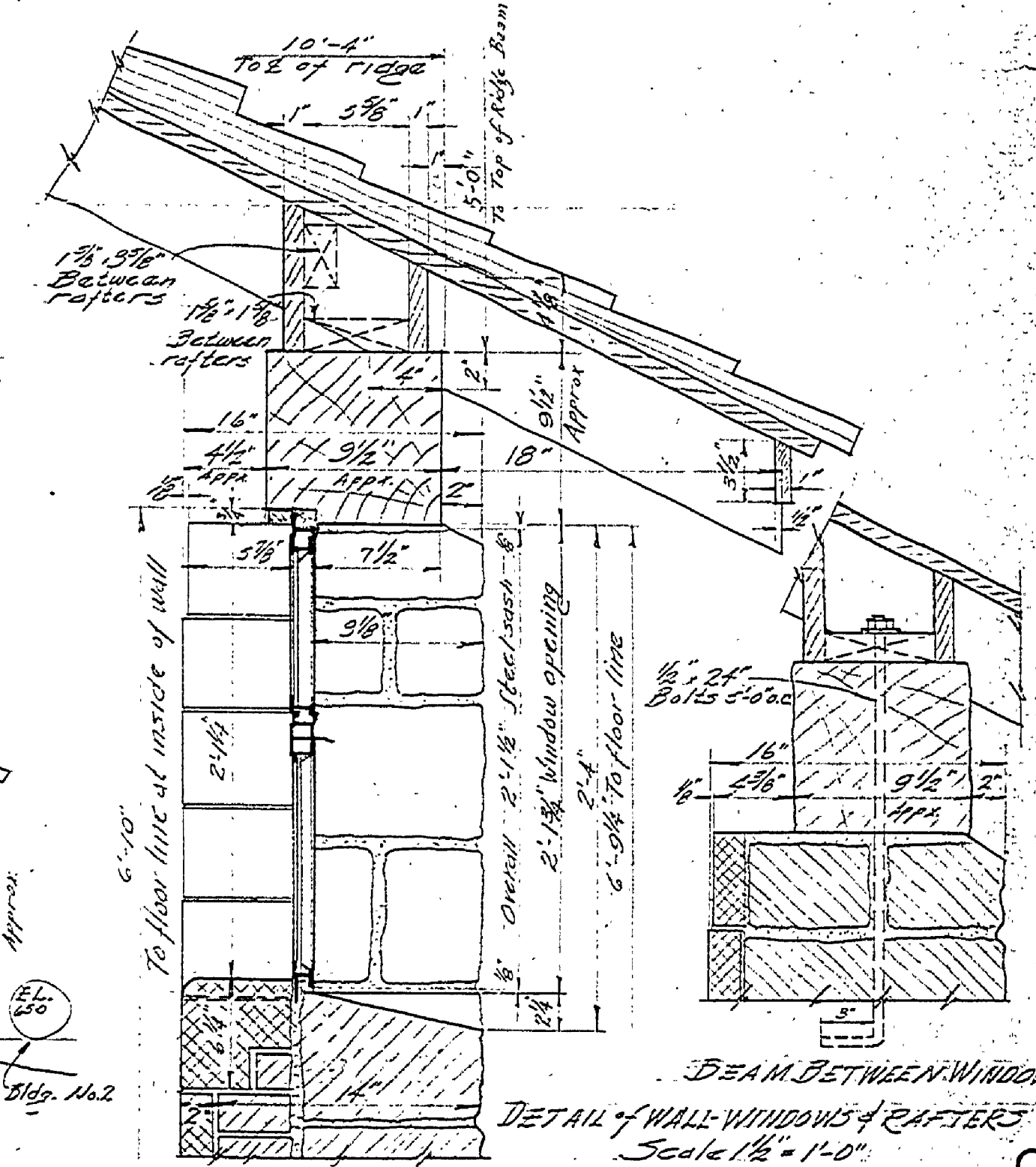
REAR ELEVATION BUILDING NO. 2



FRONT ELEVATION BUILDING NO. 2
TYPICAL 1/2"



TRANSVERSE SECTION ON LINE "B-B" LOOKING TOWARDS OUTSIDE WALL
SCALE 1/4" = 1'-0"



DETAIL OF WALL, WINDOWS & RAFTERS
SCALE 1/2" = 1'-0"

| | | |
|----------------------------------------------------------------------------------------------------------------------------|-------------------------------------------------------|-------------------------|
| MICHIGAN DEPARTMENT OF CONSERVATION United States DEPARTMENT OF THE INTERIOR NATIONAL DARK SERVICE COOPERATING | | |
| DESIGNED BY L. J. RICHMOND | TOILET BUILDING NO. 1 & 2 ORCHARD BEACH STATE PARK | PLANNED BY SHEFFIELD |
| DRAWN BY C. W. WOOD | MANITOWIC, MICHIGAN | SCALE DATE 7-10-30 |
| CHECKED BY | | |
| APPROVED BY CHIEF OF PARKS DIVISION | | DATE |
| APPROVED INSPECTOR | | DATE |