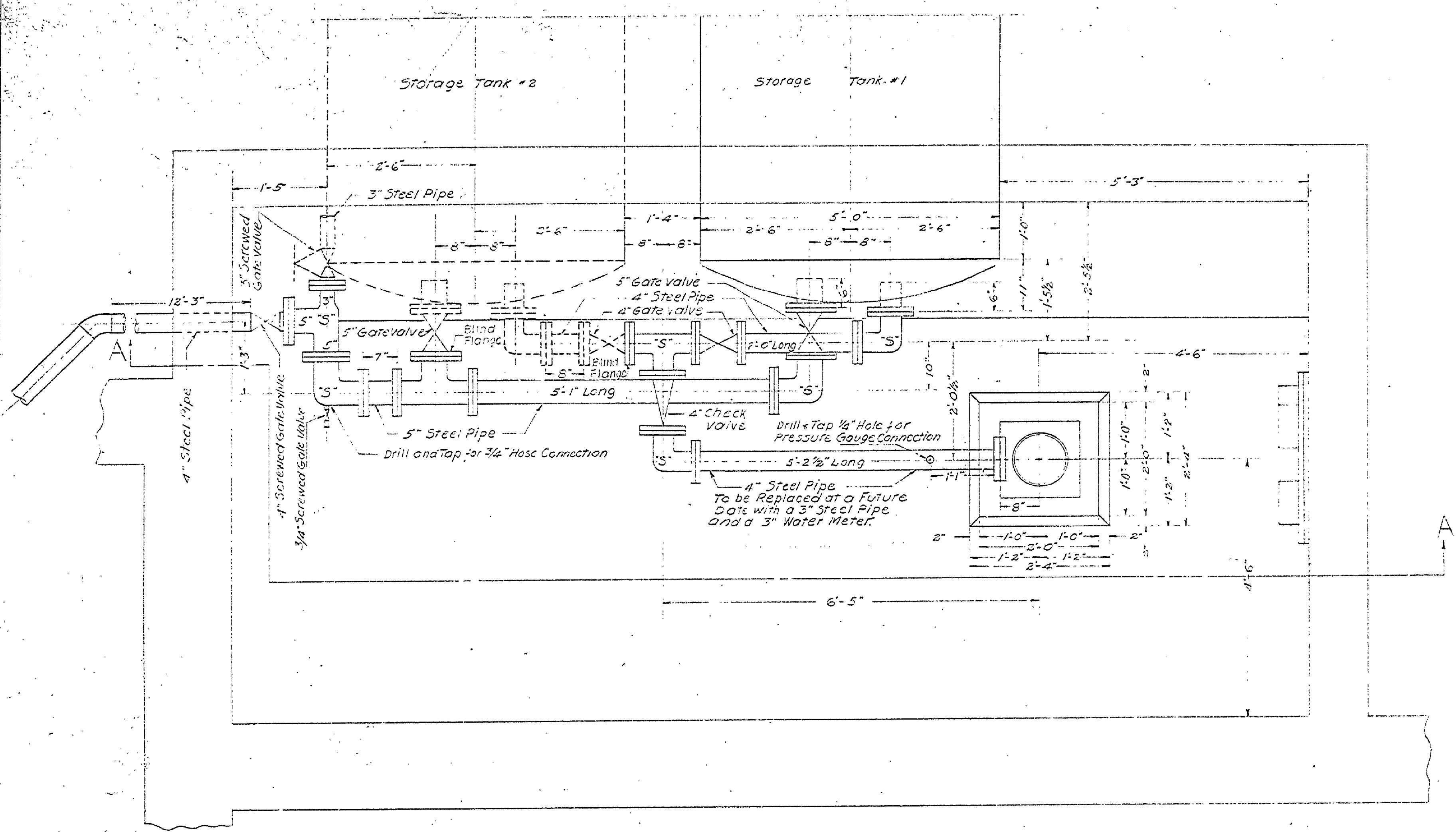
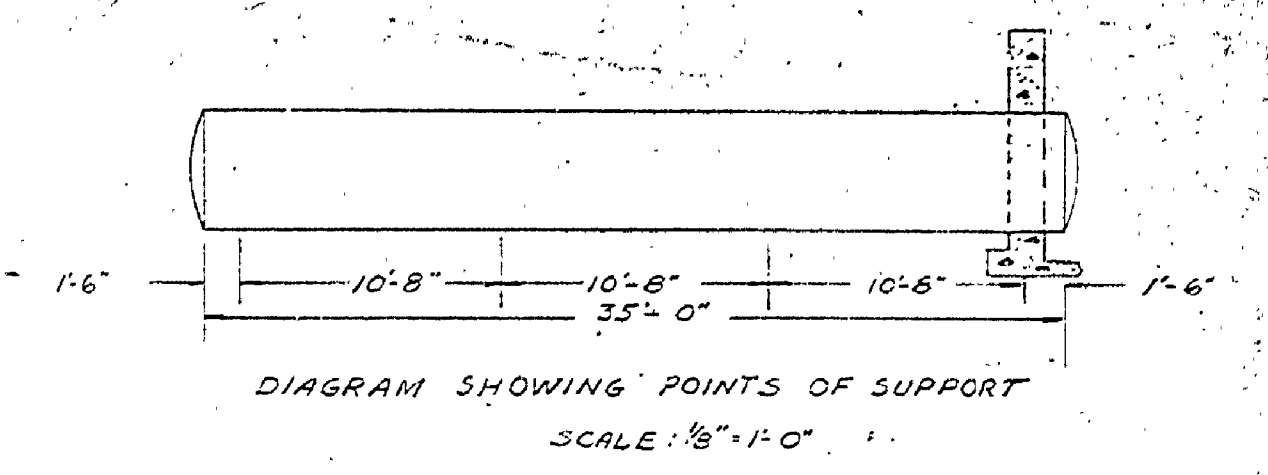
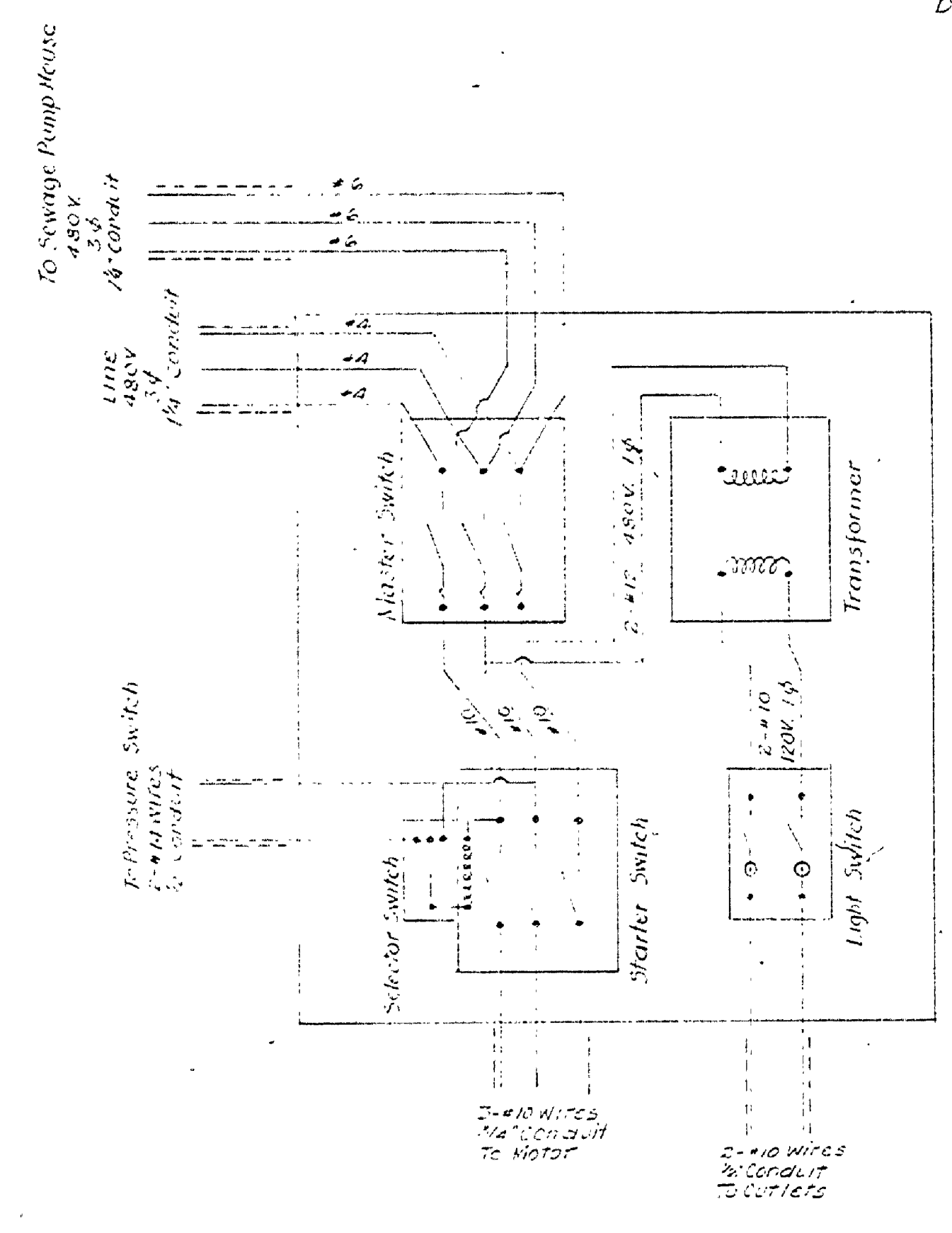


SWITCH SPECIFICATIONS
 TO BE SUPPLIED BY STATE:
 MASTER SWITCH - General Purpose Safety Switch,
 Fused, 1 Pole, 75 Amp, 60 Amp,
 Similar to Square D # 26342.
 LIGHT SWITCH - General Purpose Safety Switch,
 Fused, 2 Pole, 250V, A.C., 20 Amp,
 Similar to Square D # 85241.
 TRANSFORMER - 1/2 KVA - 4:1 Ratio Transformer - Air cooled,
 Primary - 480V, Secondary - 120 V,
 Similar to G.E. # 1629 (Auto Transformer)

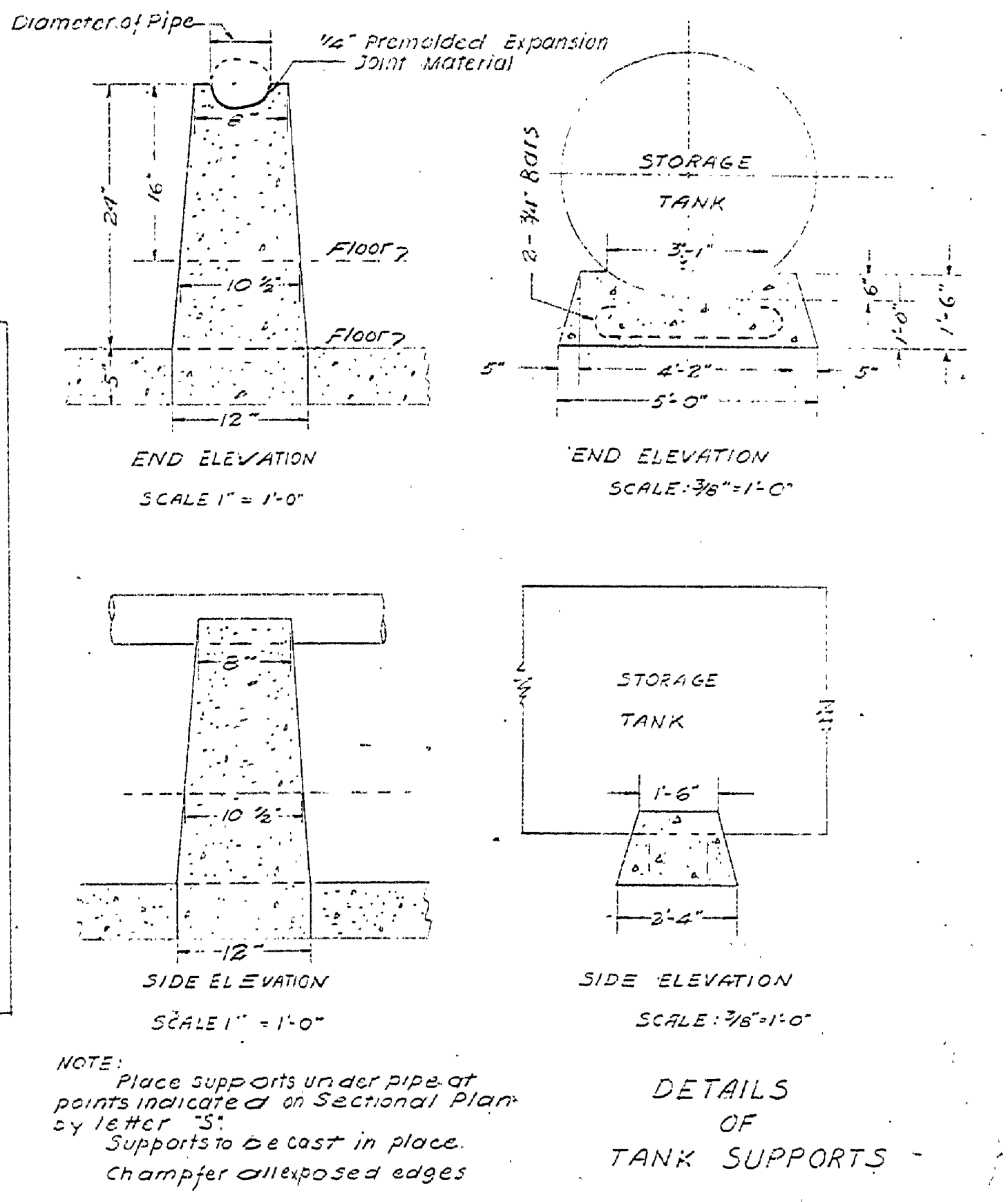
TO BE SUPPLIED BY OTHERS:
 STARTER SWITCH - I.C. 6036 - 480V, 30, 15 AMP.
 PRESSURE SWITCH - I.C. 9014 - 45 - 60A.



SECTIONAL PLAN
 Scale 3/8" = 1'-0"

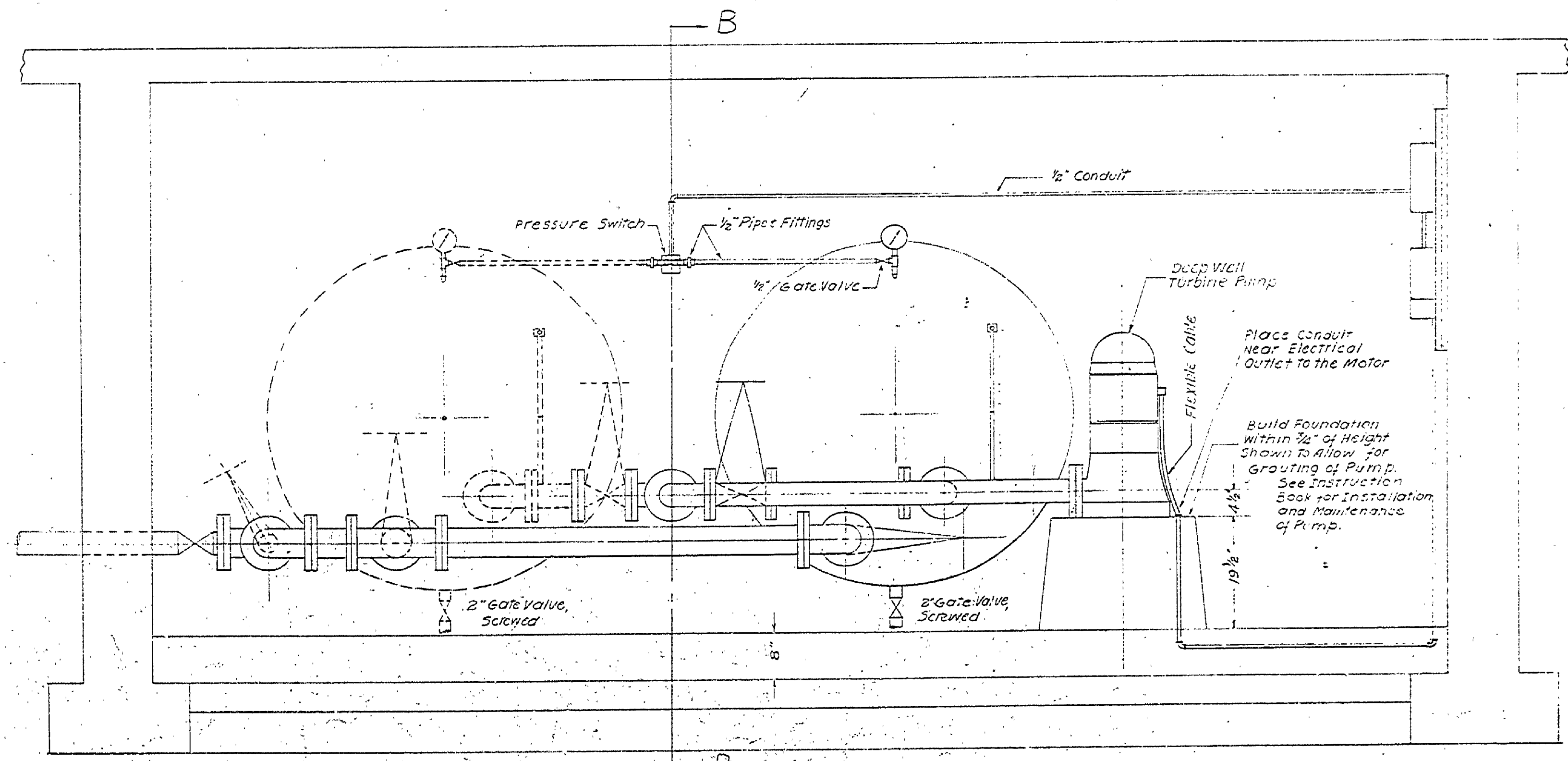


SWITCHBOARD PLAN
 Scale 1/2" = 1'-0"

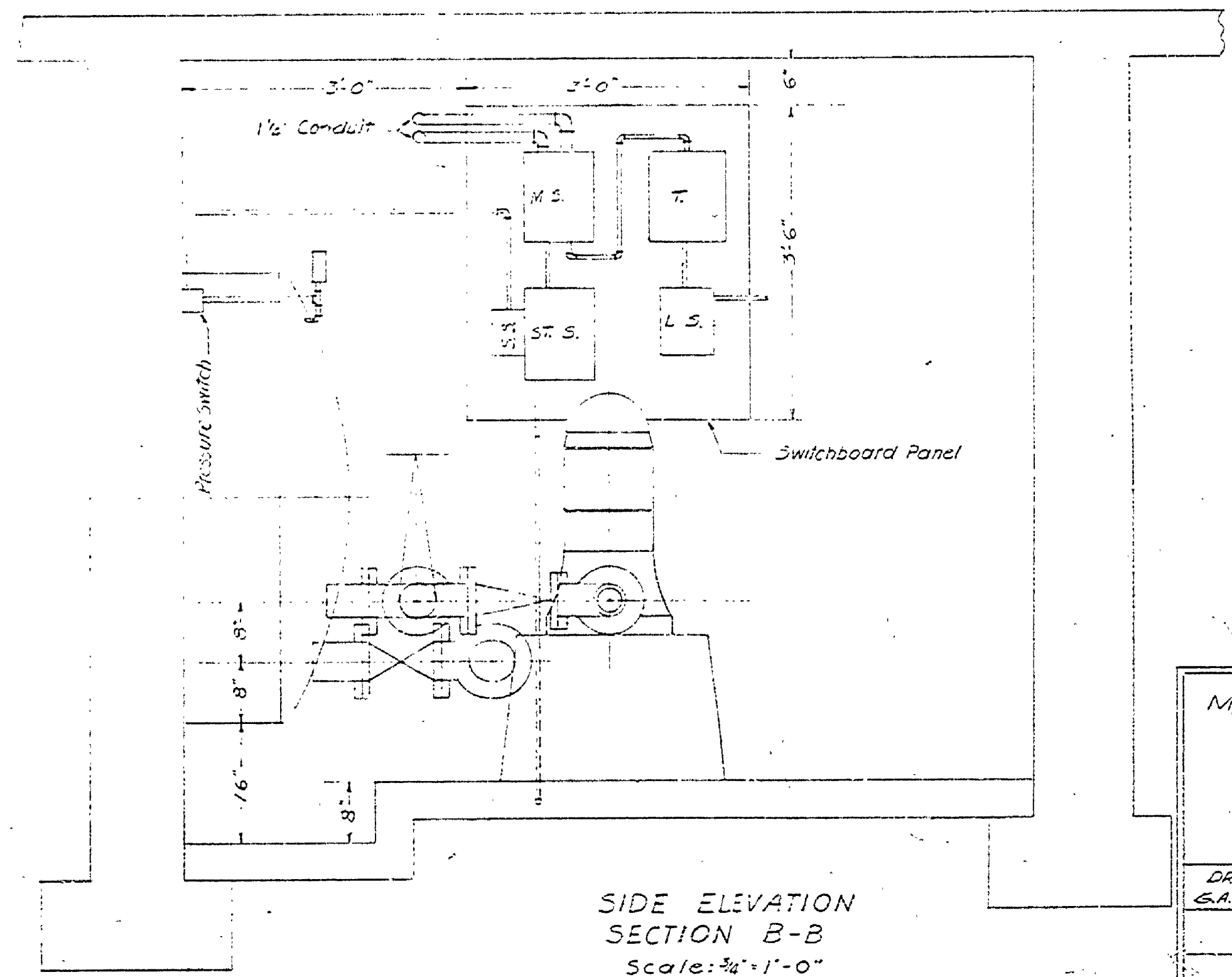


DETAILS OF
 TANK SUPPORTS

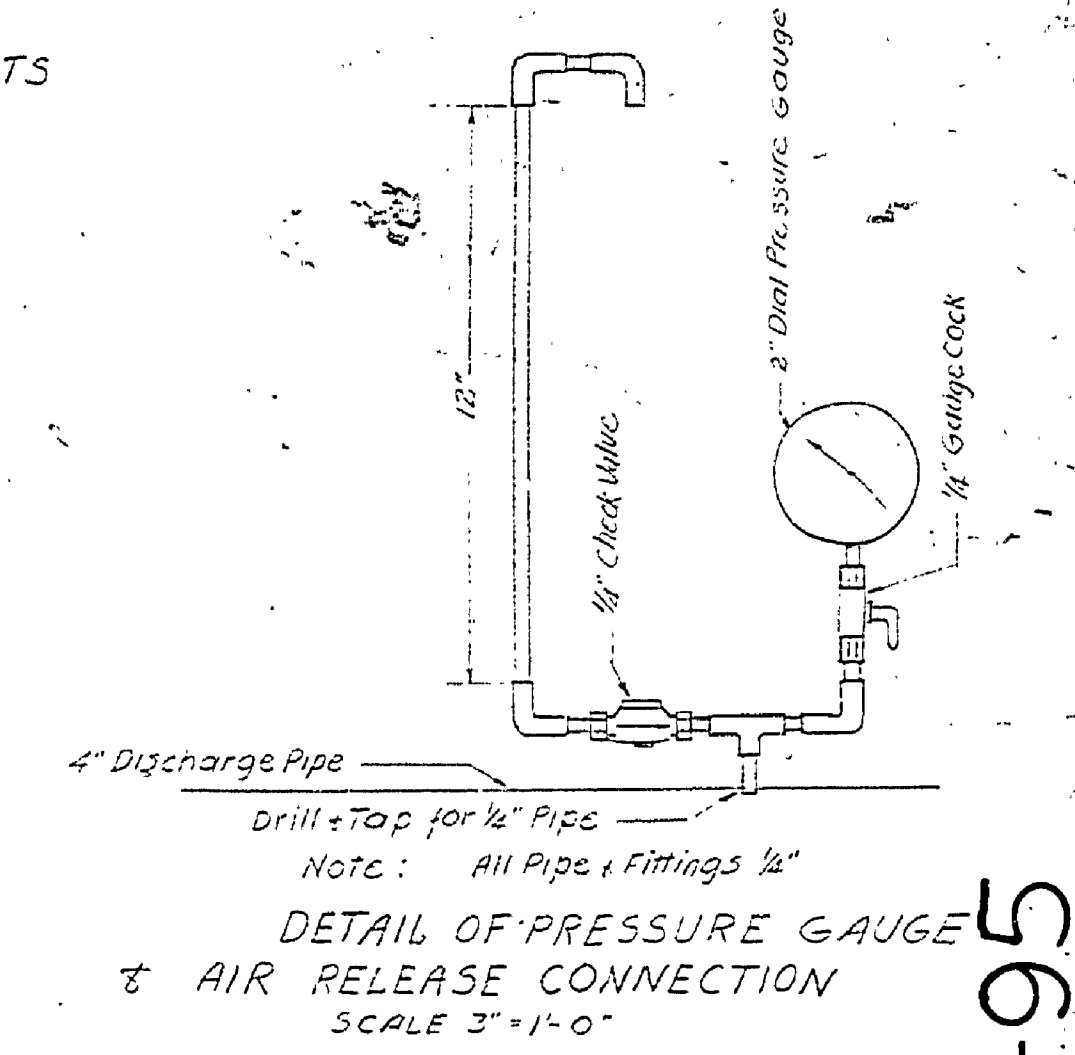
DETAILS OF
 PIPE SUPPORTS



FRONT ELEVATION
 SECTION A-A
 Scale 3/8" = 1'-0"



SIDE ELEVATION
 SECTION B-B
 Scale 3/8" = 1'-0"



DETAIL OF PRESSURE GAUGE
 & AIR RELEASE CONNECTION
 Scale 3" = 1'-0"

MICHIGAN DEPARTMENT OF CONSERVATION
 UNITED STATES
 DEPARTMENT OF THE INTERIOR
 NATIONAL PARK SERVICE
 COOPERATING

DRAWN BY G.A. SHADRO	ORCHARD BEACH STATE PARK	PLAN NO.
	PUMP HOUSE INSTALLATION PLANS	SCALE AS SHOWN
		DATE 4-16-41

APPROVED _____ DATE _____
 APPROVED _____ DATE _____
 INSPECTOR

E-95

E-95