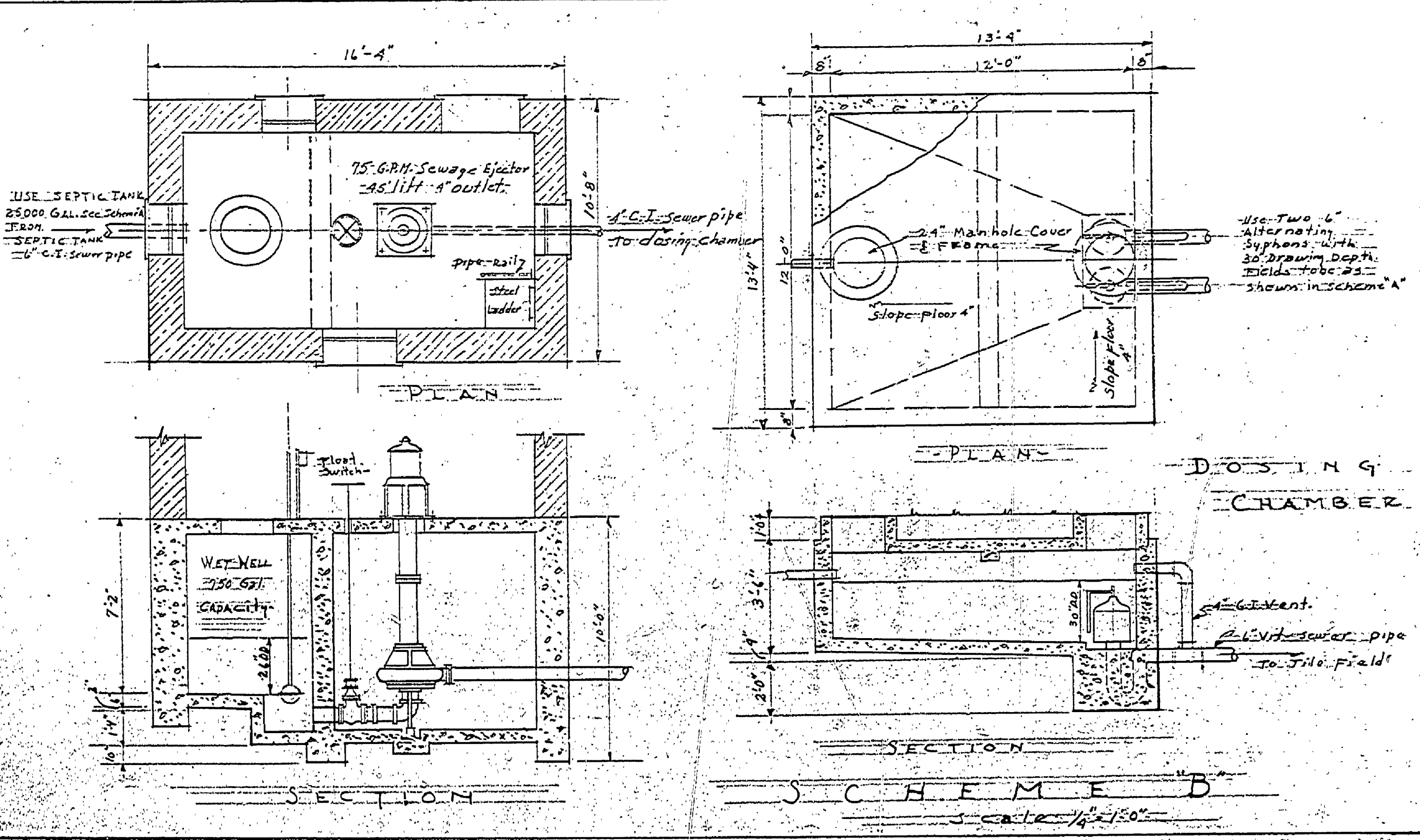
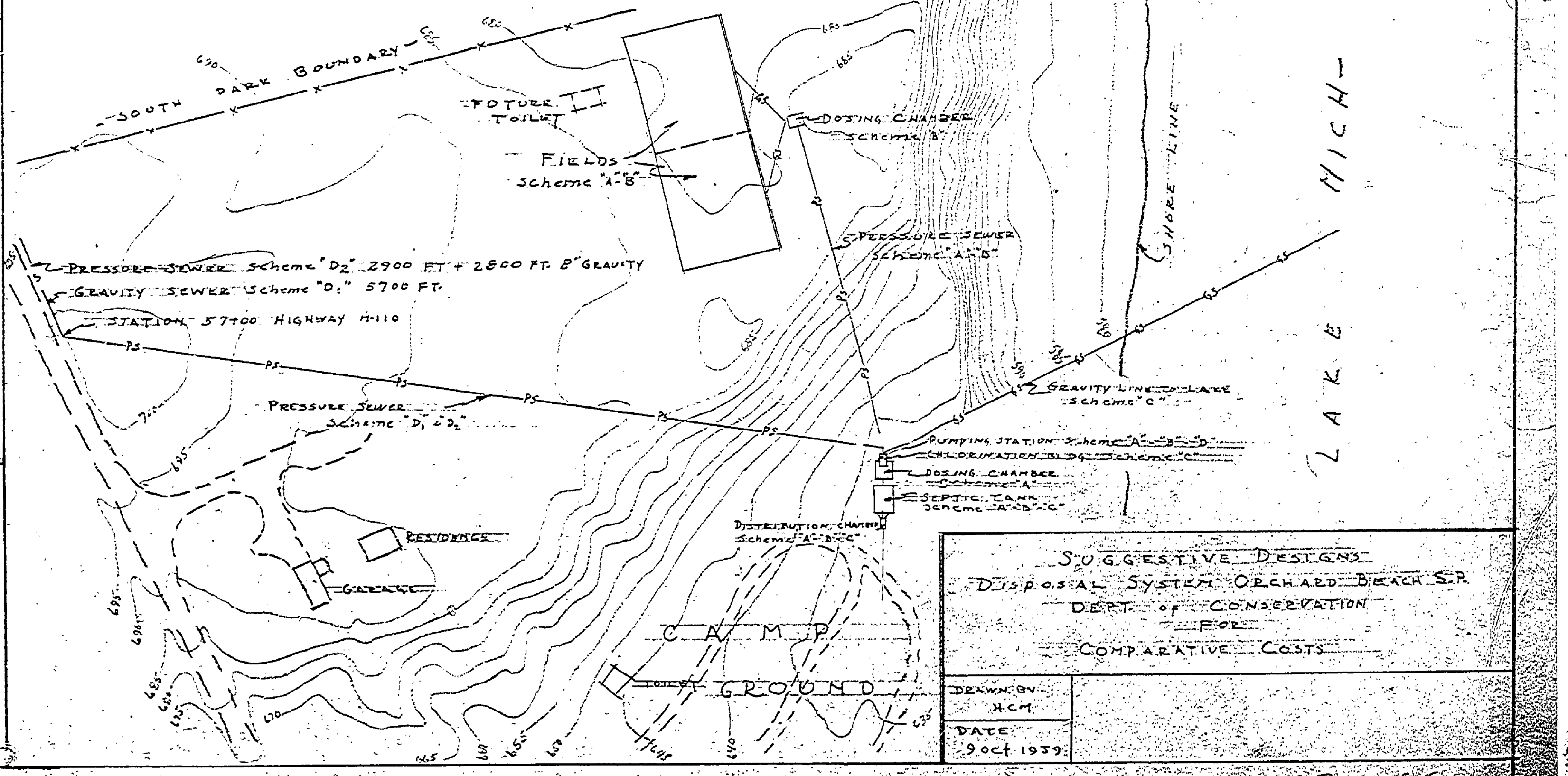


SECTION THRU CENTER OF SYSTEM -
 SCHEME "A"
 Scale: 1/4" = 1'-0"



SCHEME "C"
 Use Distribution Chamber & septic tank as shown in Scheme A. From septic tank run chlorine contact chamber to apply with chlorine and run into Lake Mich. in 4" C.I. pipe with universal joints. Pipe to run not less than 200 ft. from shore line. Pipe to be removable during winter months.
 See HOICKARD STATE PARK RECREATION BLDG. for preliminary estimate. Only change separator line to conform to design to be used in ORCHARD BEACH STATE PARK.

SCHEME "D"
 Raw sewage to run to Pumping station as shown in Scheme B. Charge pump from one 4" sewage ejector. Two 250 G.P.M. sewage ejectors 100 G.P.M. capacity each. 45 ft. lift. Pressure line to run to City for use.
 D₁ - 1000 ft. C pressure line - 5700 ft.
 D₂ - 1000 ft. C pressure line - 5700 ft.
 D₃ - 1000 ft. C pressure line - 5700 ft.
 D₄ - 1000 ft. C pressure line - 5700 ft.



SUGGESTIVE DESIGN - DISPOSAL SYSTEM ORCHARD BEACH S.P.
 DEPT. OF CONSERVATION
 COMPARATIVE COSTS

DRAWN BY	H.C.M.
DATE	9 Oct 1939