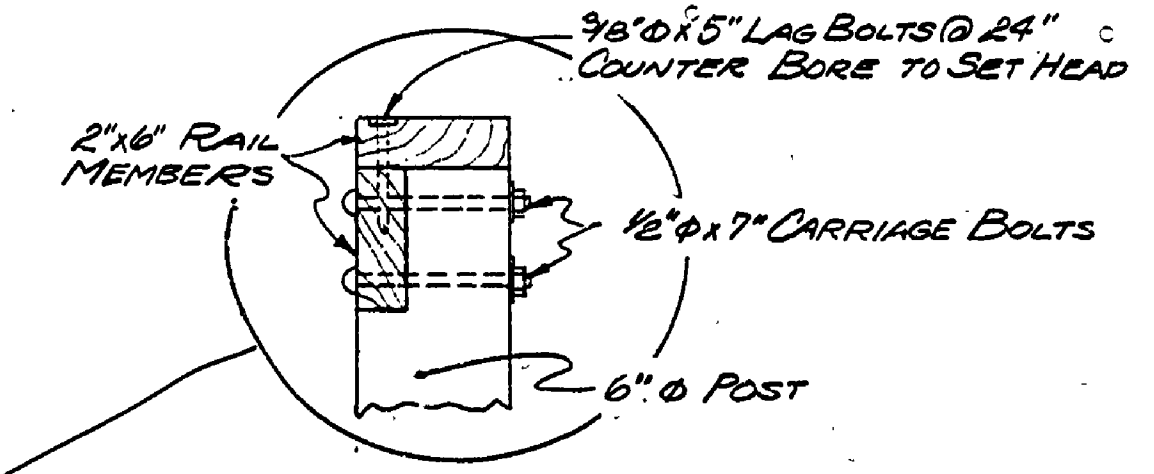
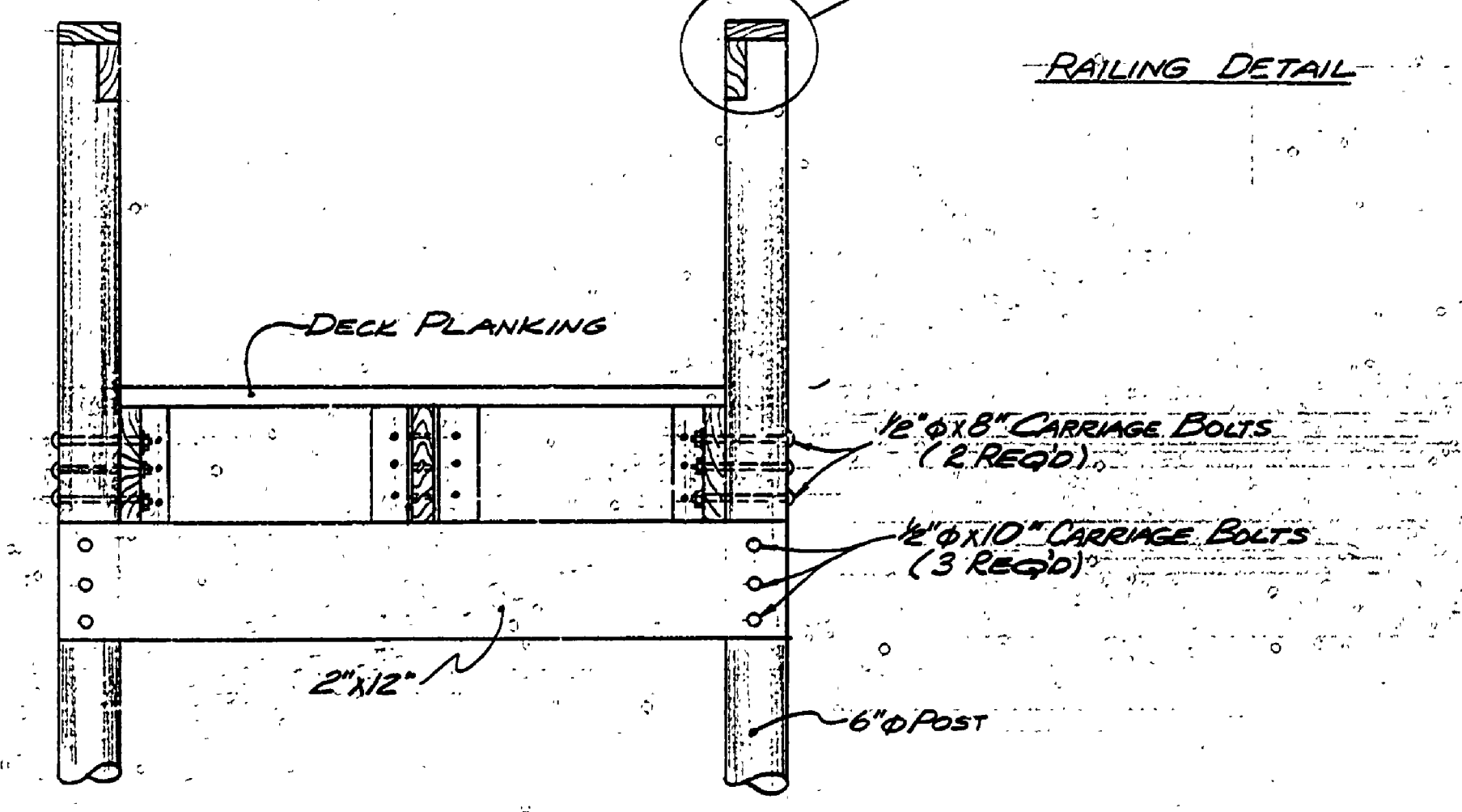


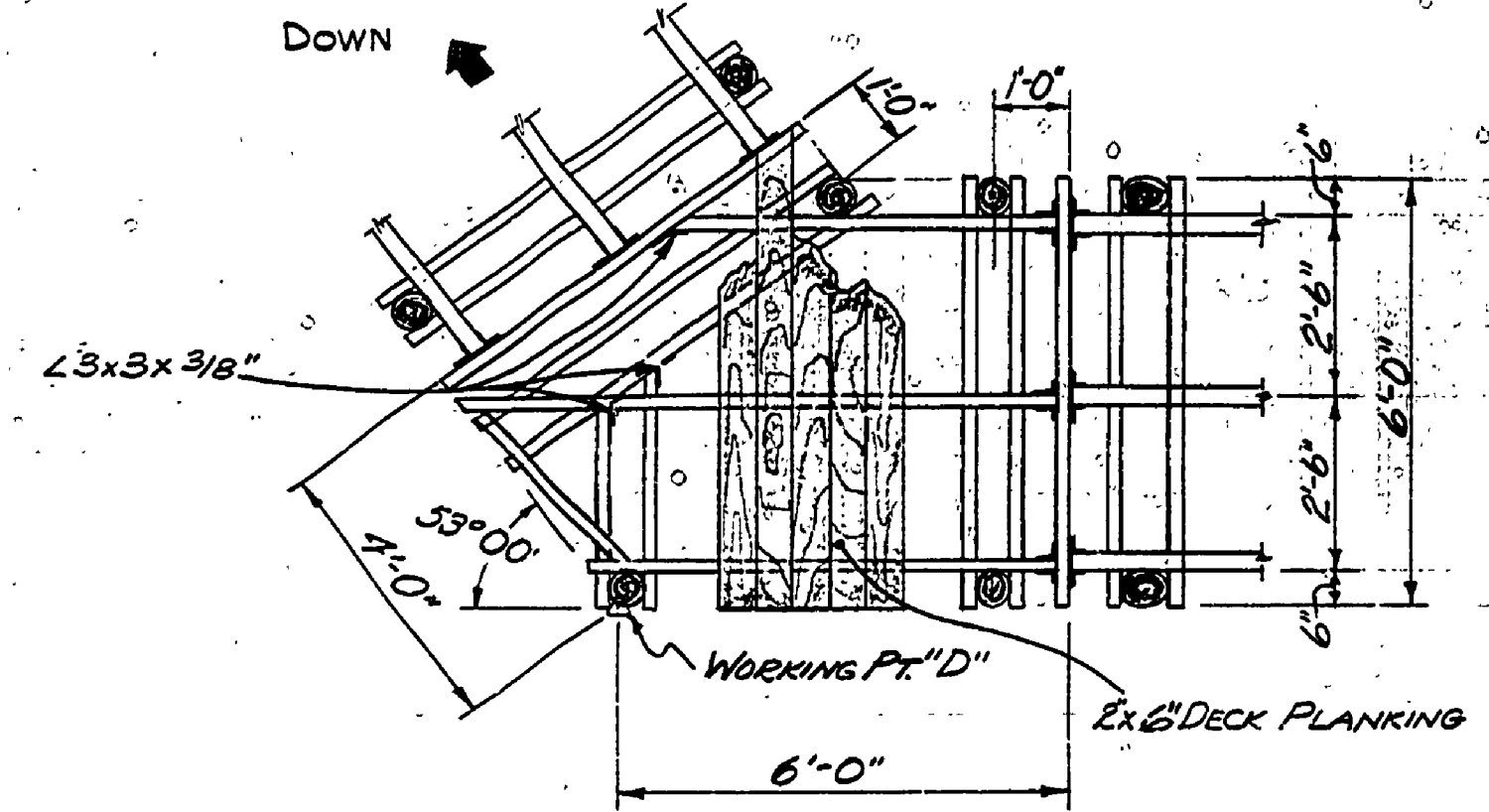
SECTION D-D
1" x 11'-0"



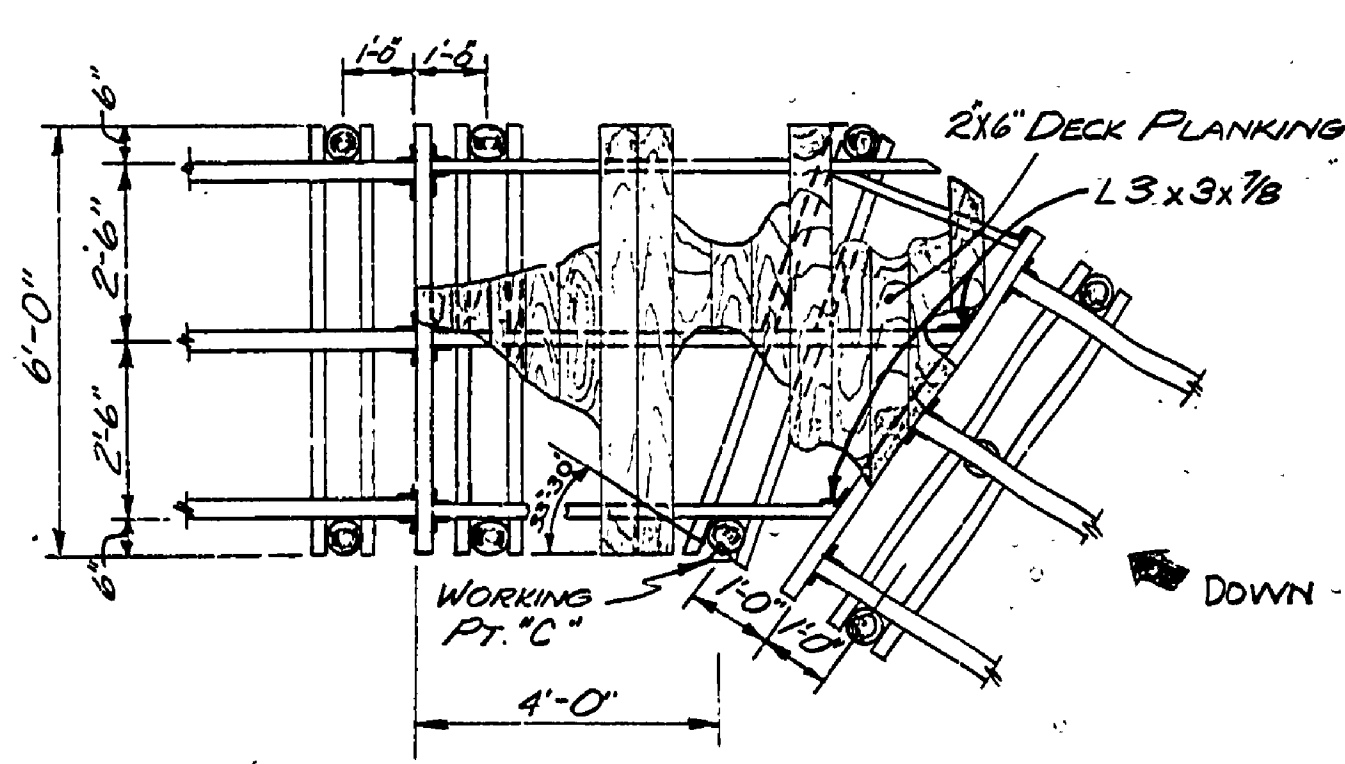
RAILING DETAIL



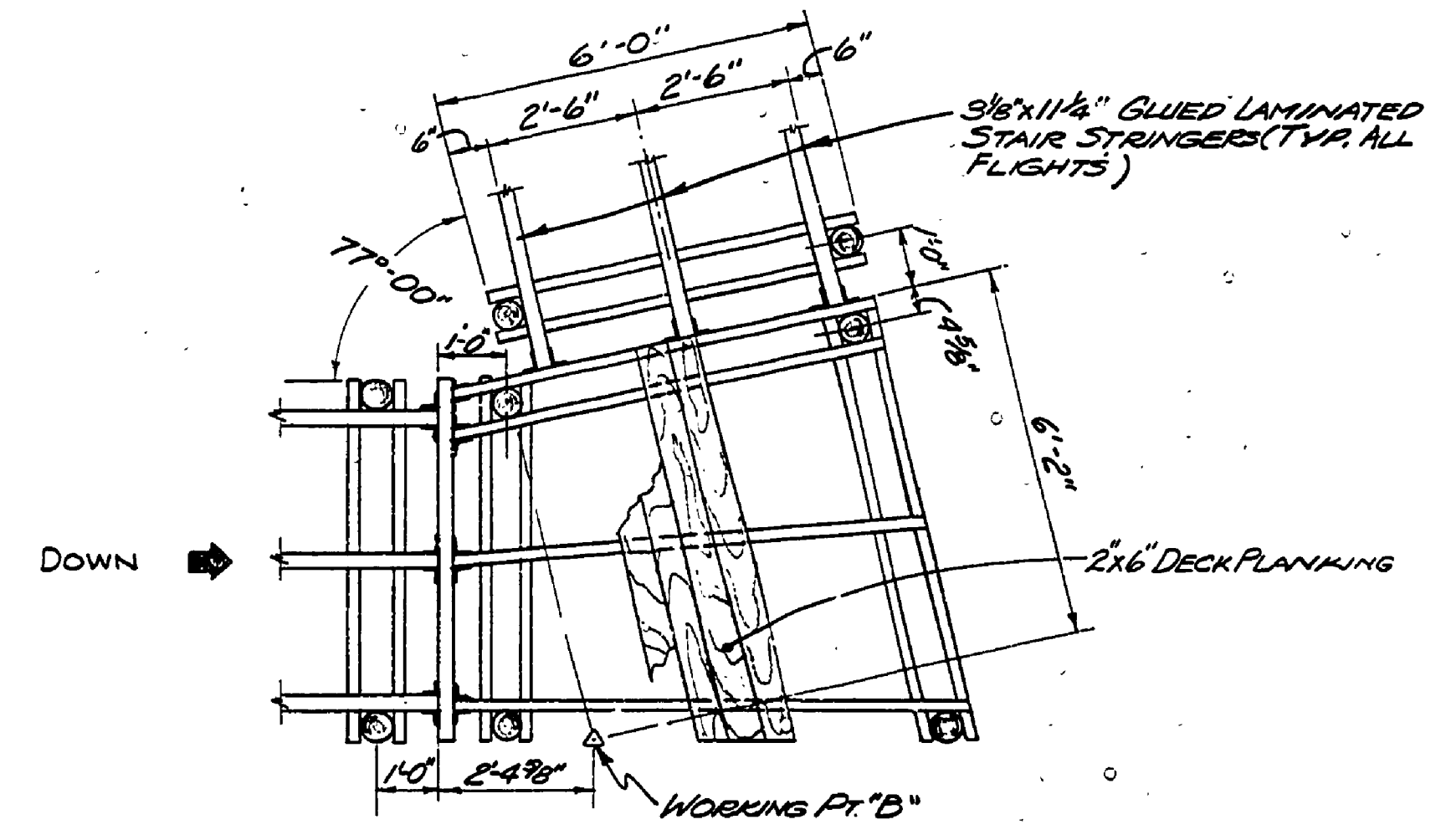
SECTION B-B
3/4" x 11'-0"



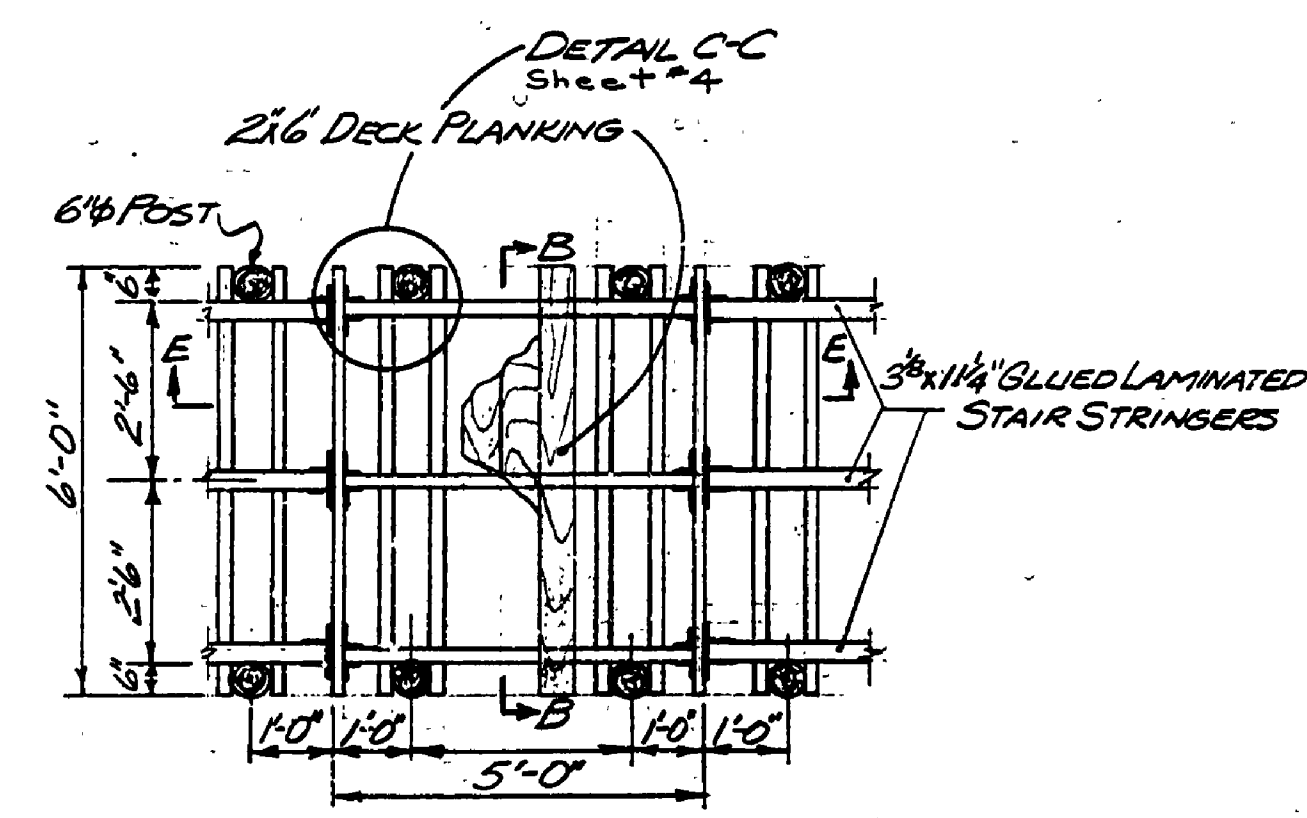
LANDING NO. 5
3/8" x 11'-0"



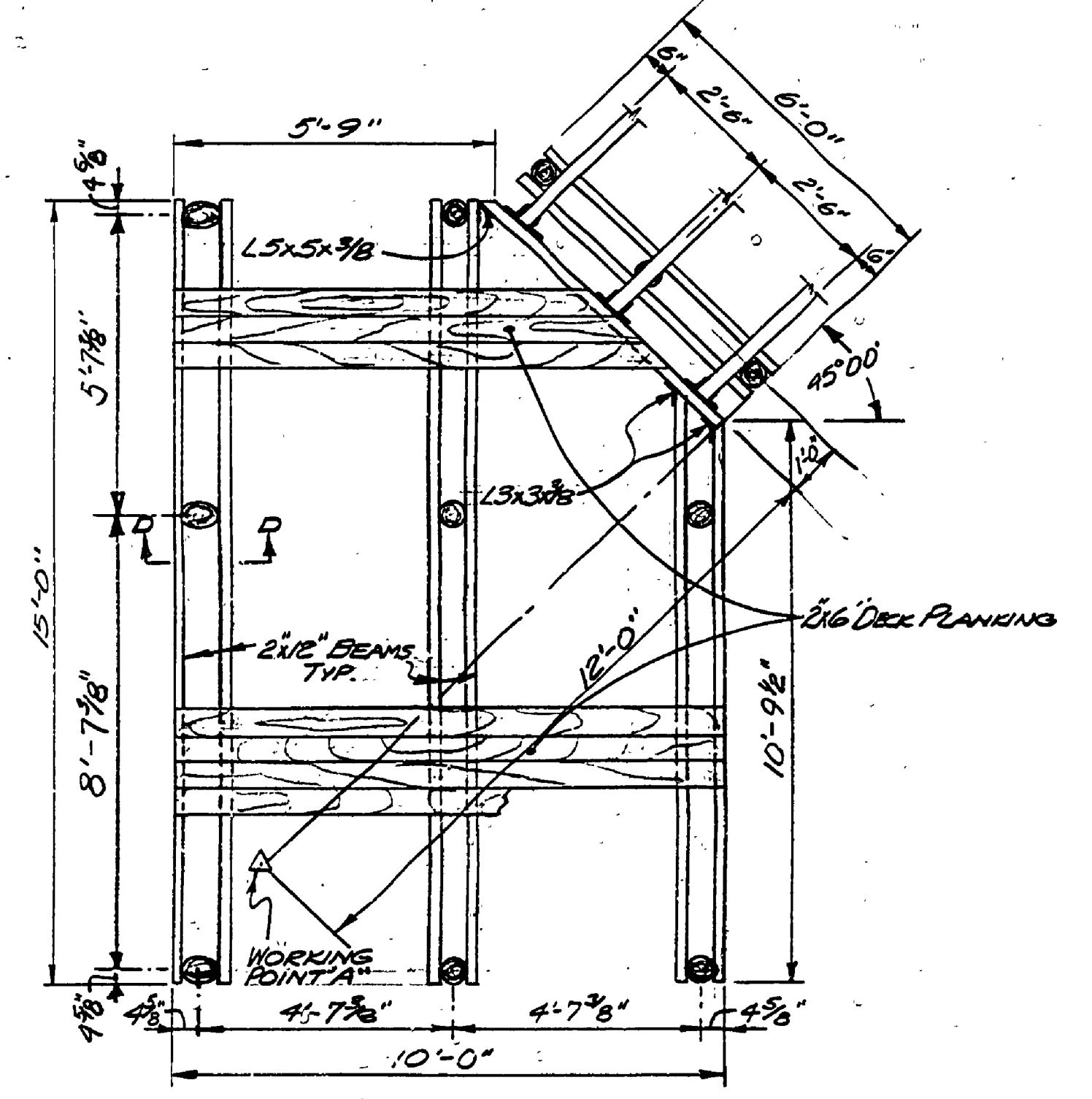
LANDING NO. 4
3/8" x 11'-0"



LANDING NO. 3
3/8" x 11'-0"



LANDING NO. 2
3/8" x 11'-0"



LANDING NO. 1
3/8" x 11'-0"

NOTES:

1. ALL SUPPORT POST SHALL BE SET TO A MINIMUM GROUND PENETRATION OF 5' AND DRIVEN WITH A HEAVY MAUL UNTIL FIRM BEARING CAPACITY IS DEVELOPED. A PILOT HOLE MAY BE DRILLED TO ALLOW FOR MINIMUM PENETRATION BUT THE FINAL POSTION SHALL BE OBTAINED BY DRIVING.
2. TIMBER CONNECTIONS SHALL BE MADE USING STEEL STRUCTURAL ANGLES AND 1/2" BOLTS WHERE INDICATED ON THE LANDING PLANS (THIS SHEET) BY AN ANGLE SYMBOL (∟). THE MINIMUM SIZE OF ANGLE SHALL BE ∟ 3 1/2" x 3/8" AND THE MINIMUM NUMBER OF FASTENERS SHALL BE THREE PER ANGLE LEG.
3. TIMBER BEAMS SHALL BE FASTENED TO POST USING A THREE BOLT ARRANGEMENT (SEE SECTION BB).
4. ALL TIMBER MEMBERS EXCEPT DECK PLANKING, RAILING AND STAIR STRINGERS TO BE 2" x 12" STRESS GRADED LUMBER.

SURVEYED BY A. MCANN	526-77	DRAWN BY C. E. MASSEY	6-71	NO. DATE BY	REVISIONS	NO. DATE BY	REVISIONS	MICHIGAN DEPARTMENT OF NATURAL RESOURCES	BEACH STAIRS DETAILS	AREA OR PARK ORCHARD BEACH S.P.	PROJECT NO. 24-1102
DESIGNED BY R. HAEUSLER	471	CHECKED BY		1.		3.				PROJECT BEACH STAIRS	SHEET 3 OF 4
				2.		4.					PLAN NO. E-103