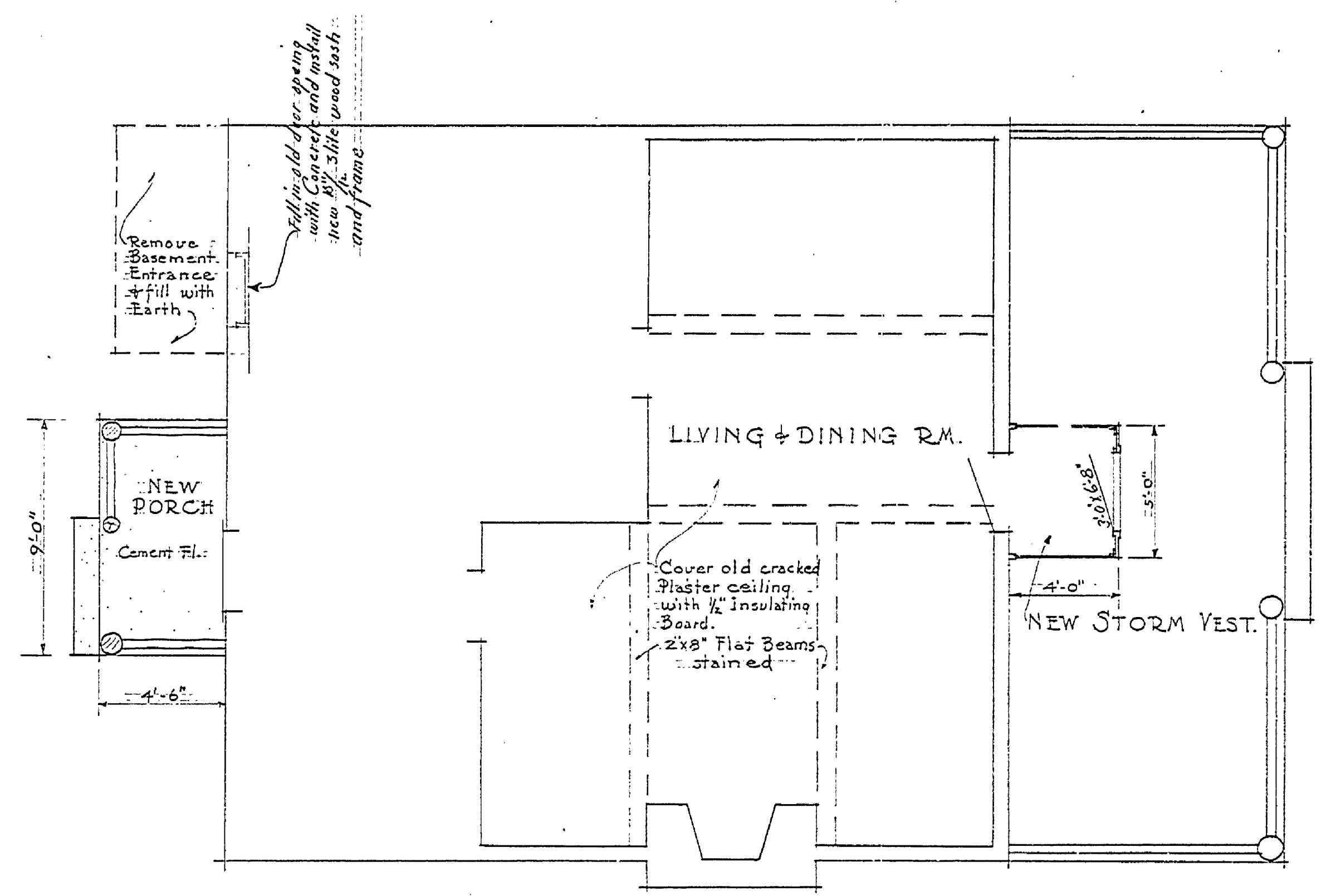
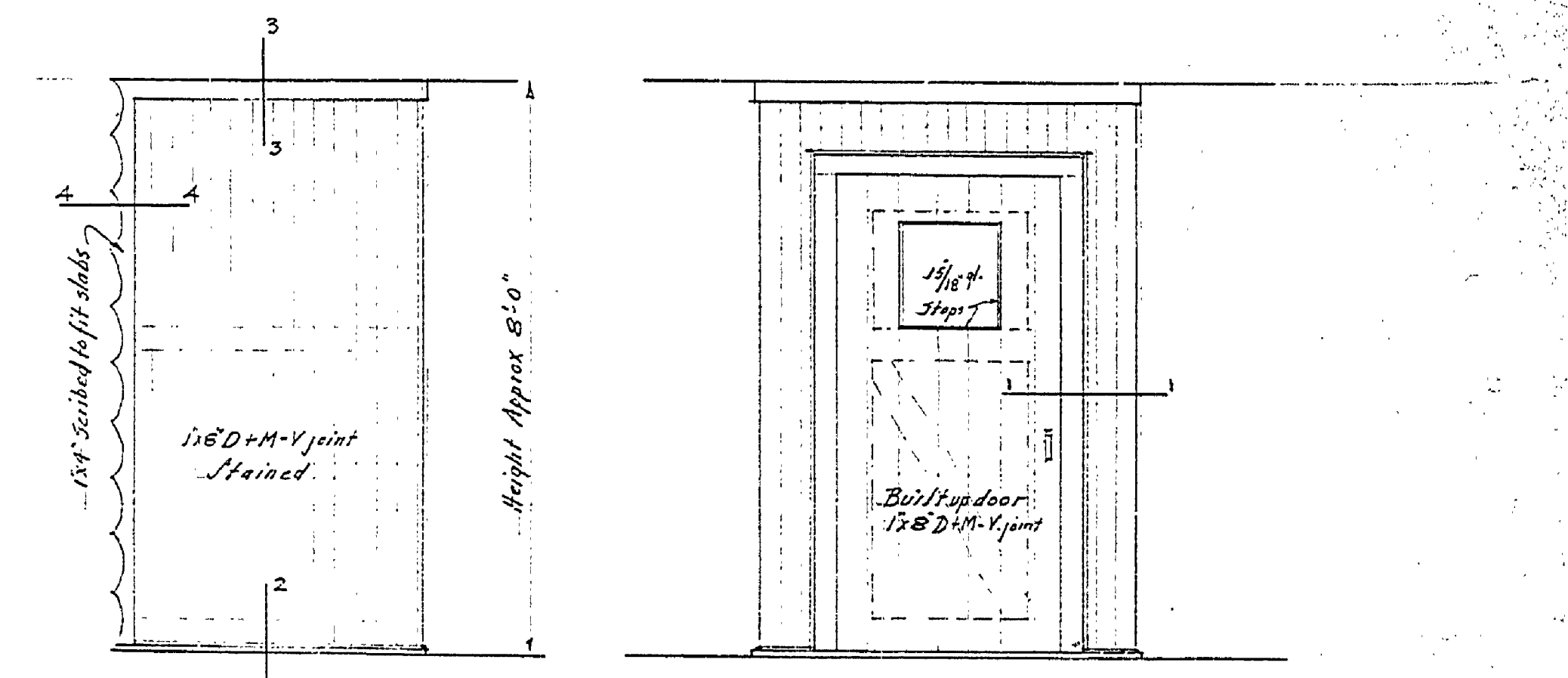


ELEVATION SECTION
 REAR PORCH DETAILS
 Scale 1/2" = 1'-0"

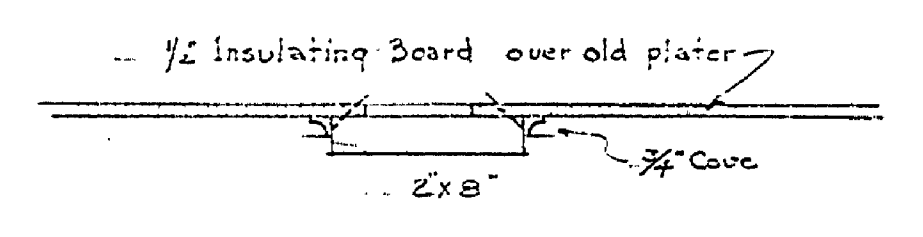


FLOOR PLAN SHOWING ALTERATIONS & ADDITIONS
 Scale 1/4" = 1'-0"

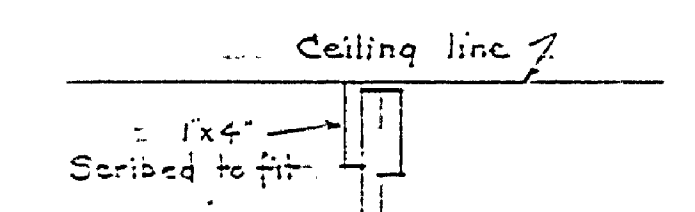


ELEVATIONS OF STORM VEST
 Scale 1/2" = 1'-0"

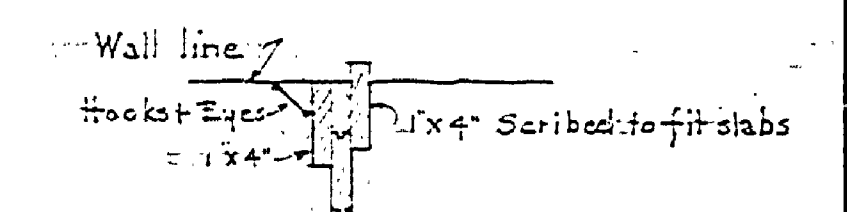
To be built in 3 sections, and when installed, to be hooked together with hooks + eyes so as to be removable.



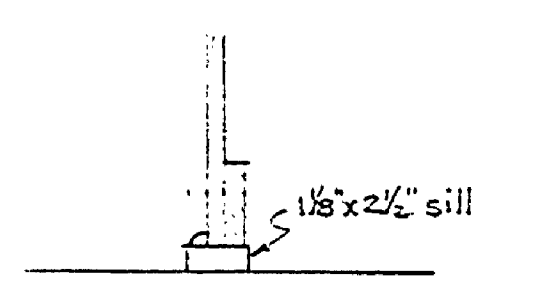
CEILING DETAIL
 Scale 1/2" = 1'-0"



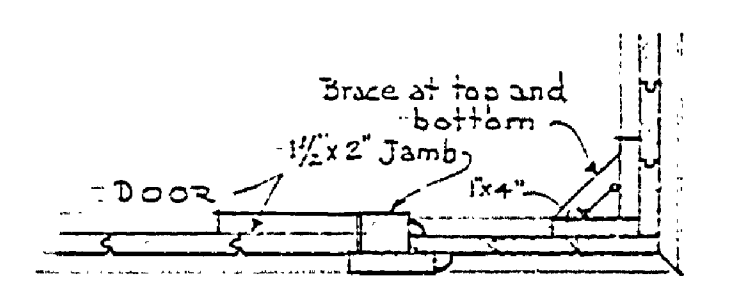
SECT. 3-3



SECT. 4-4



SECT. 2-2



SECTION 1-1

DETAILS
 Scale 1/2" = 1'-0"

A-95

DEPARTMENT OF THE INTERIOR NATIONAL PARK SERVICE And MICHIGAN DEPARTMENT OF CONSERVATION CO-OPERATING			
BRANCH OF PLANNING		STATE PARK DIVISION	
SYMBOL	HARTWICK PINES S.P.#8	SHEET NO.	1
NUMBER	HARTWICK PINES STATE PARK	FILE NO.	
DRAWN BY	CARETAKER'S RES. ALTERATIONS		
CHECKED	DESIGNED	DATE	8-2-35
DATE	PROJECT SUPERINTENDENT	DATE	ARCHITECT
RECOMMENDED FOR CONSTRUCTION	SUBMITTED	DATE	SUP'T. OF STATE PARKS
DATE	FIFTH REGIONAL INSPECTOR	DATE	APPROVED
APPROVED FOR CONSTRUCTION	FIFTH REGIONAL OFFICER N.P.S.	DATE	MICH. CONSERVATION COMM'N