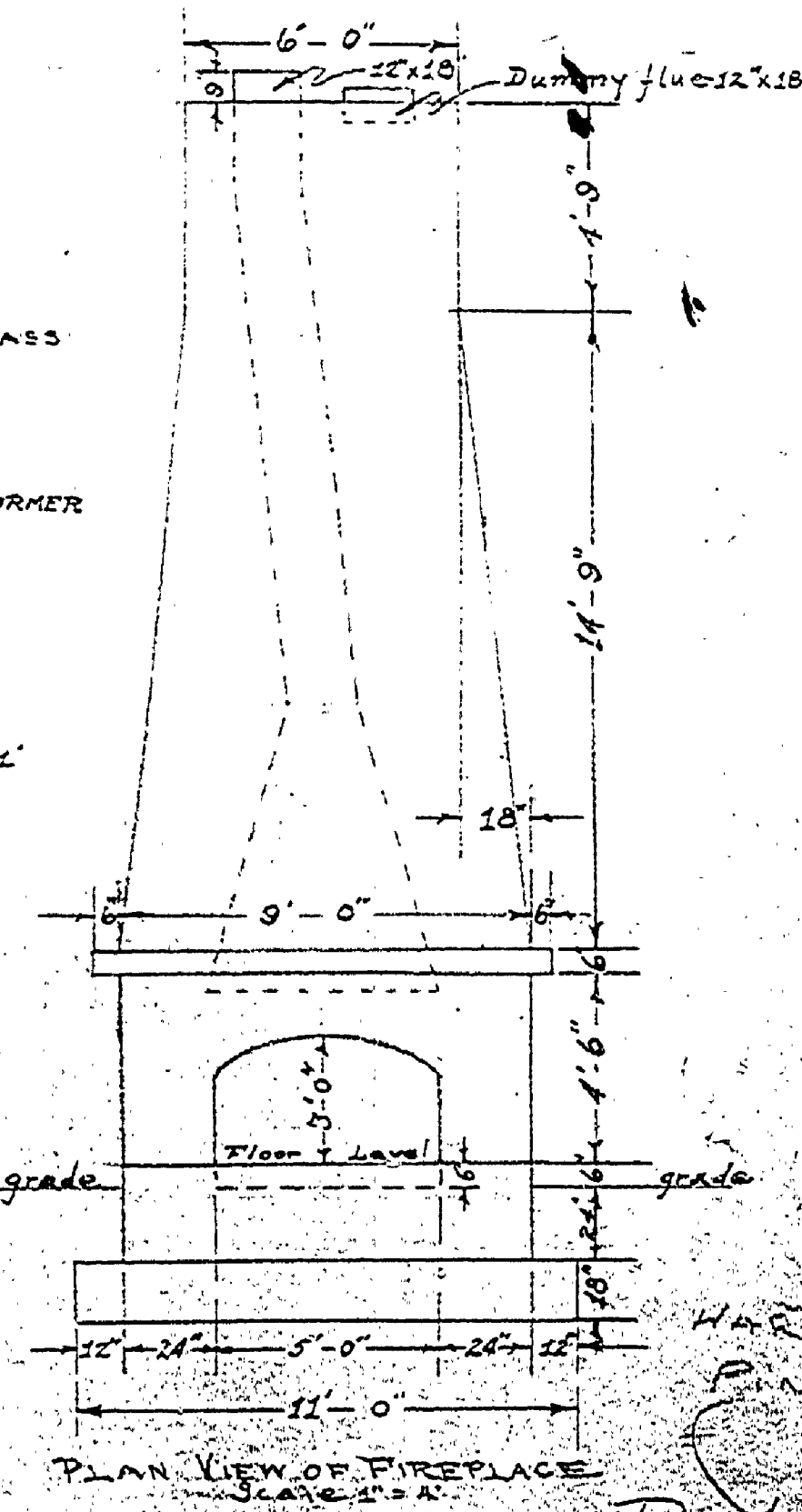
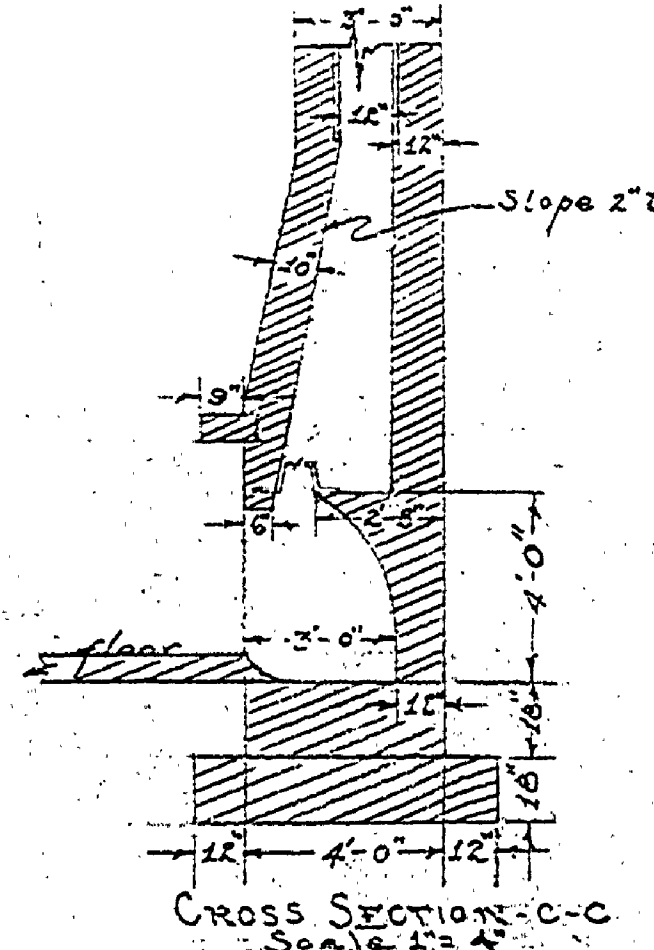
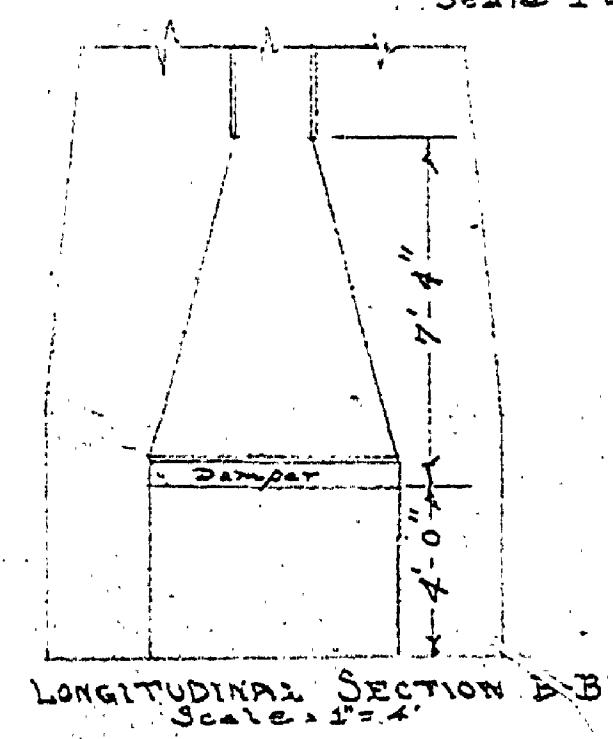
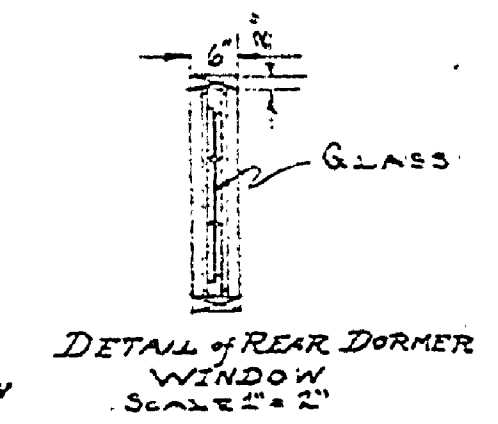
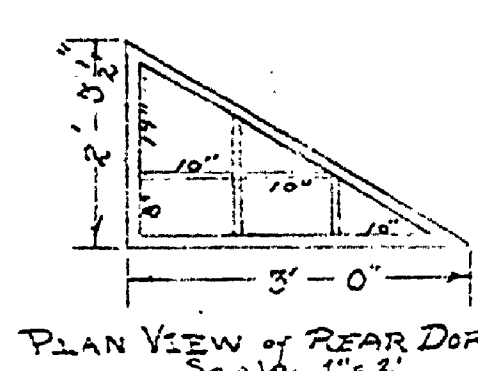
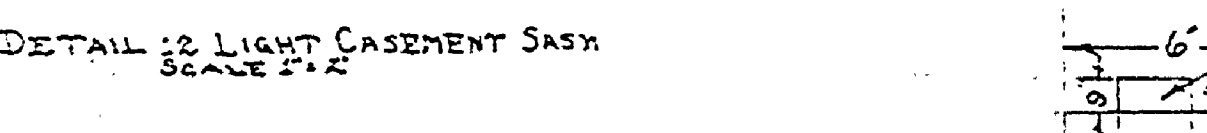
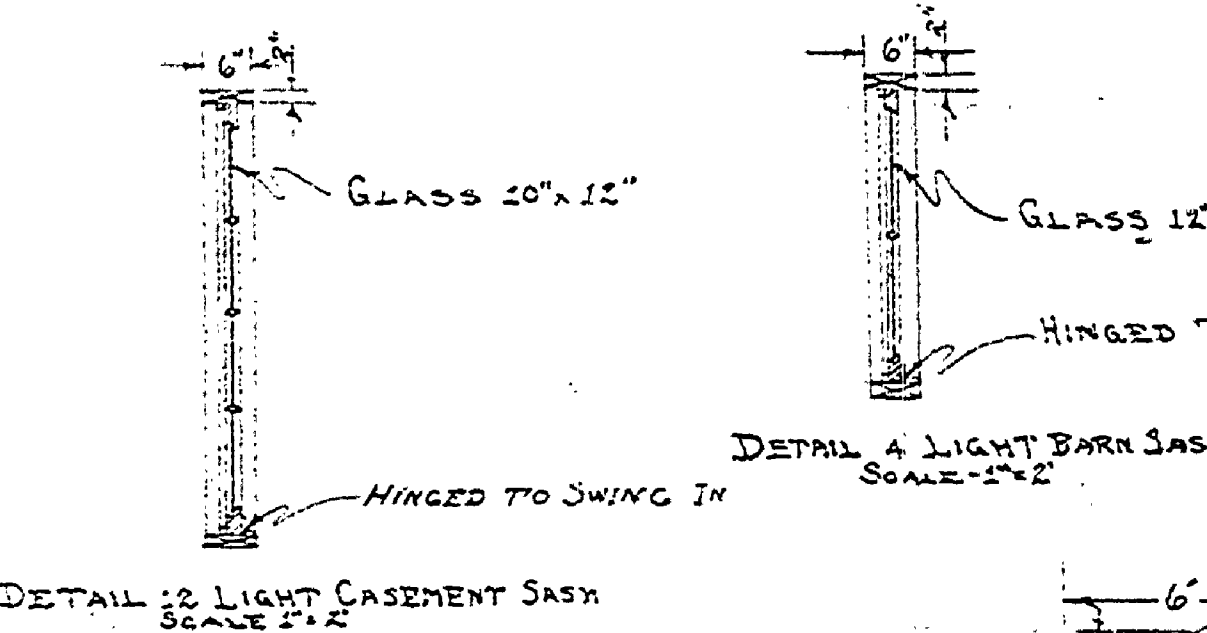
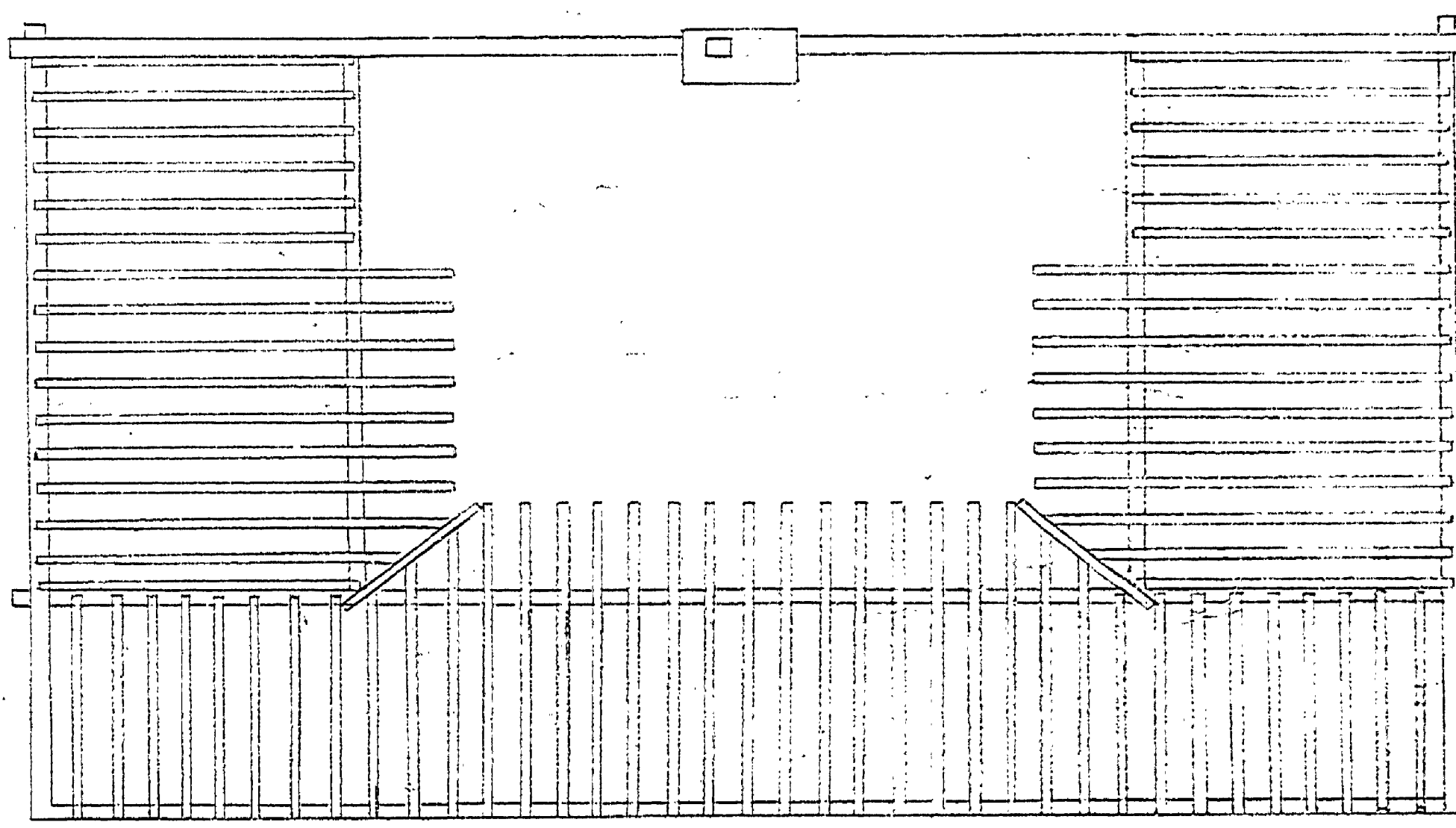
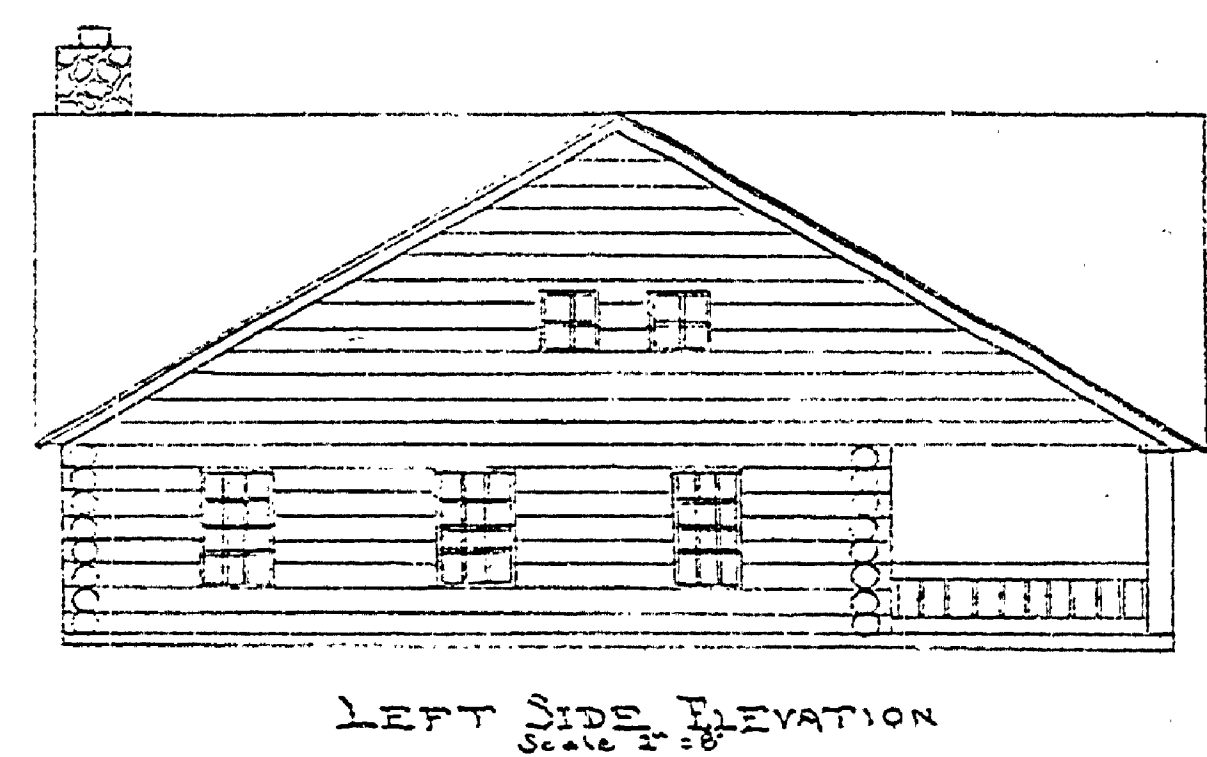
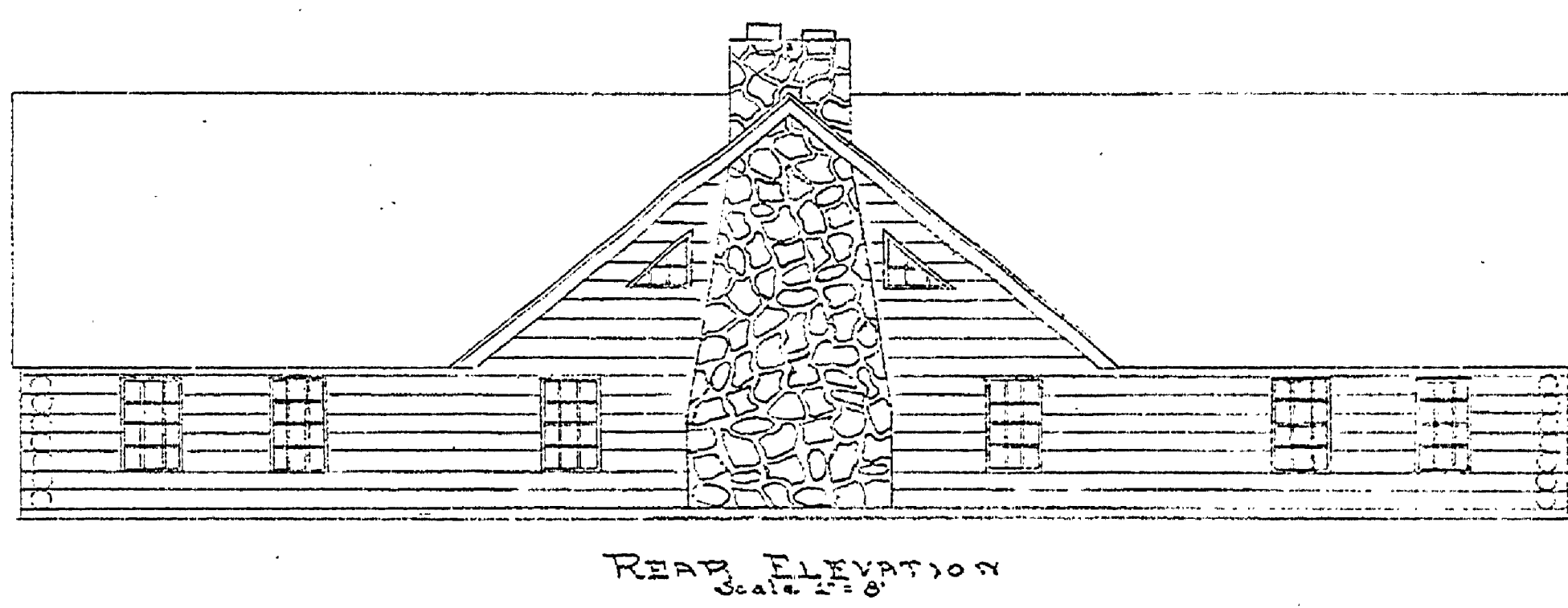
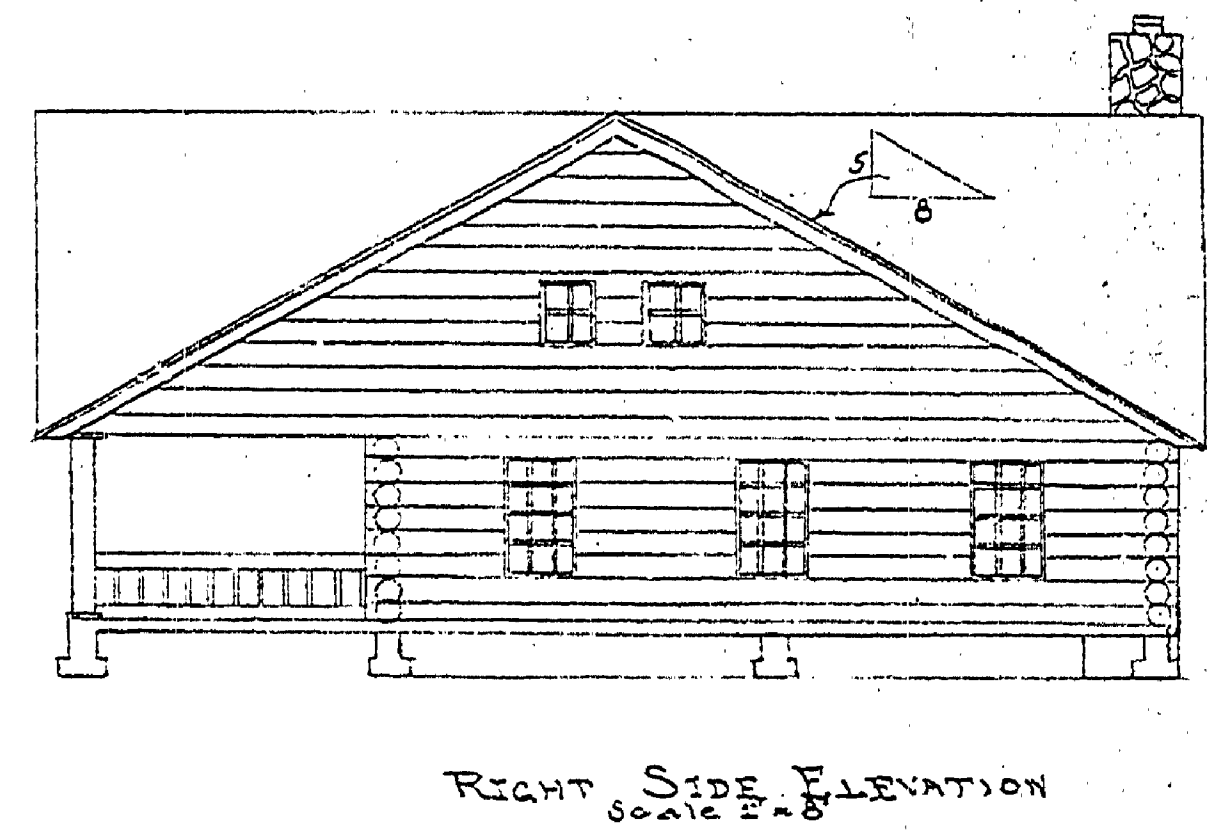
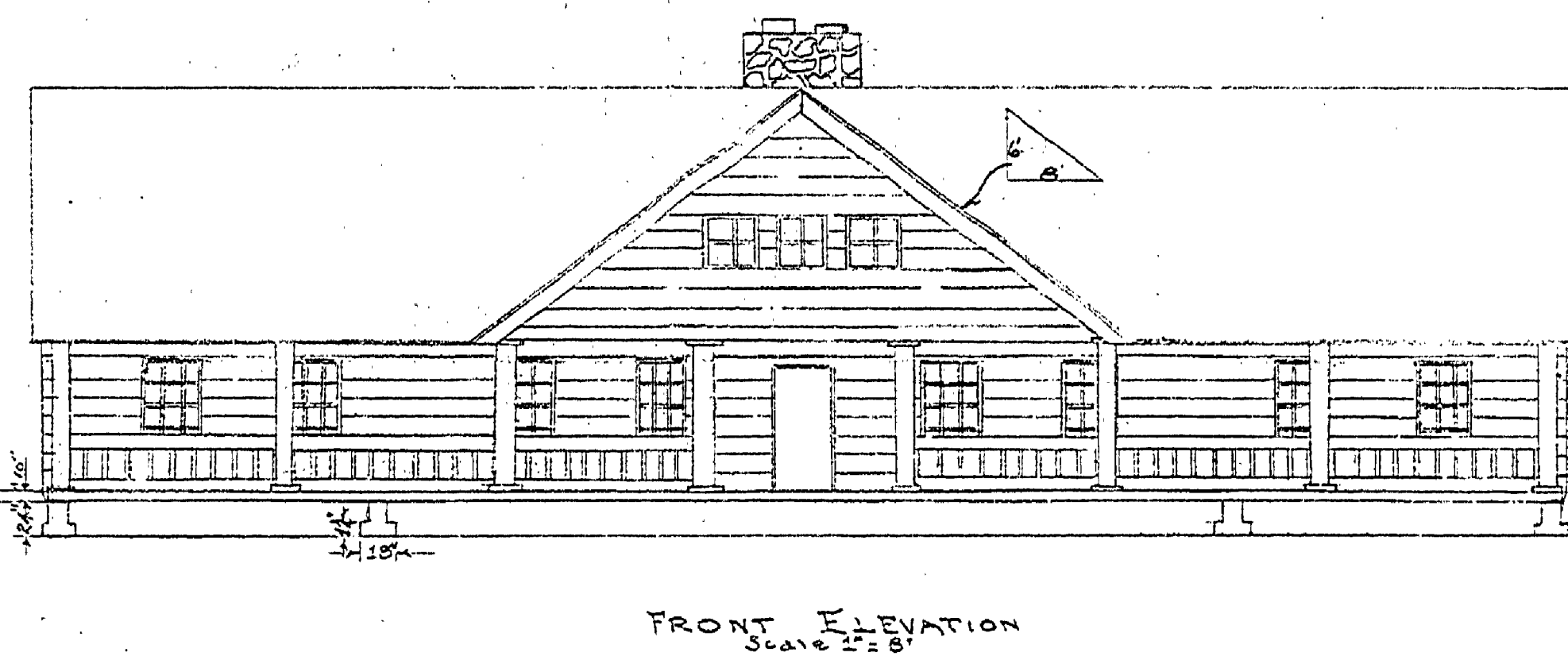


NO.	DESCRIPTION	QTY.	UNIT
1	2x4	100	LF
2	2x6	50	LF
3	2x8	20	LF
4	2x10	10	LF
5	2x12	5	LF
6	4x4	5	PC
7	4x6	5	PC
8	4x8	5	PC
9	4x10	5	PC
10	4x12	5	PC



PROPOSED PUBLIC SERVICE BUILDING FOR
EDWARD E. HARTWICK PINE PARK

DEPARTMENT OF CONSERVATION
OCT. 3, 1929
J. I. R.

INSURANCE - No. 3

A-97

HARTWICK
PINE
ORIGINAL