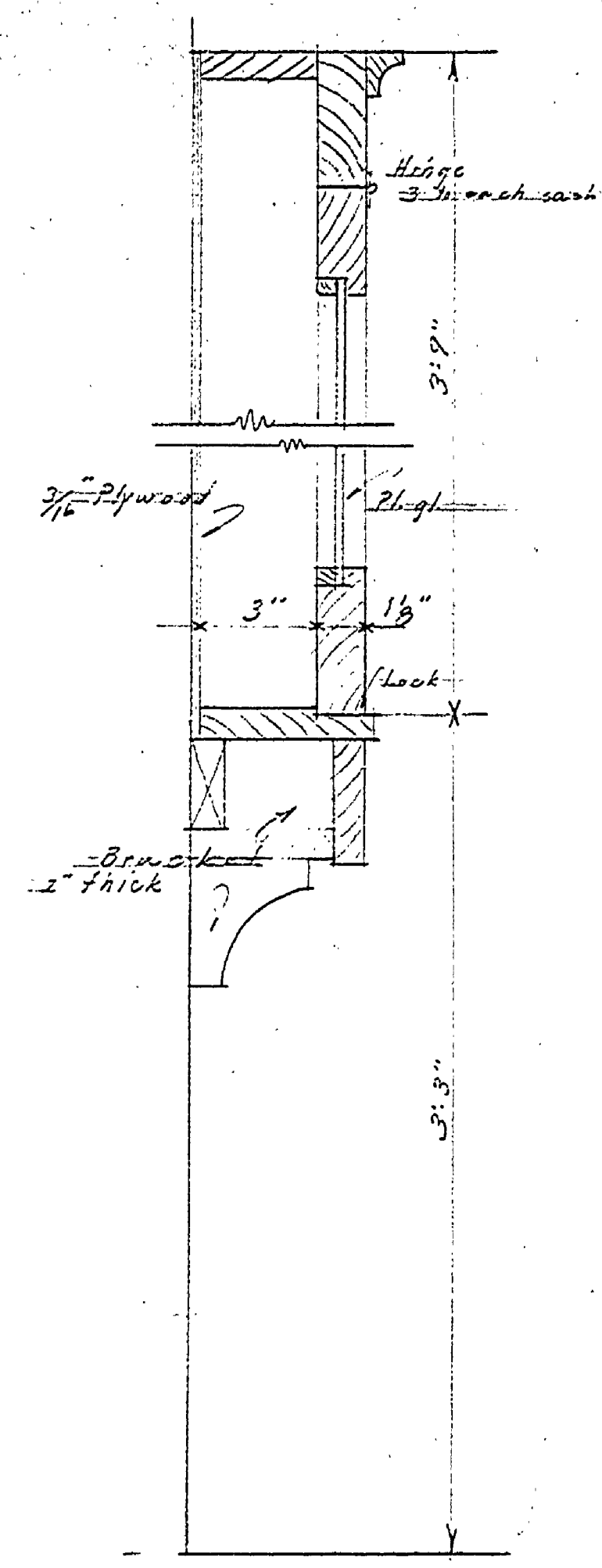
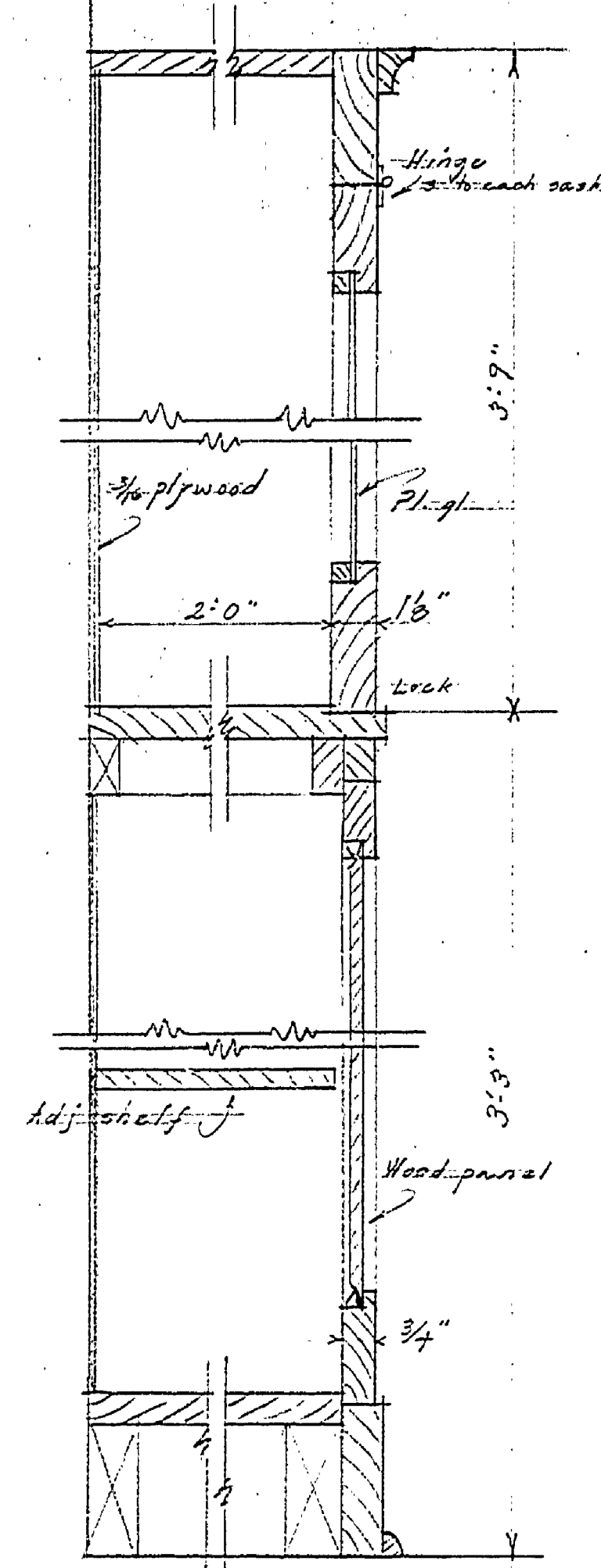


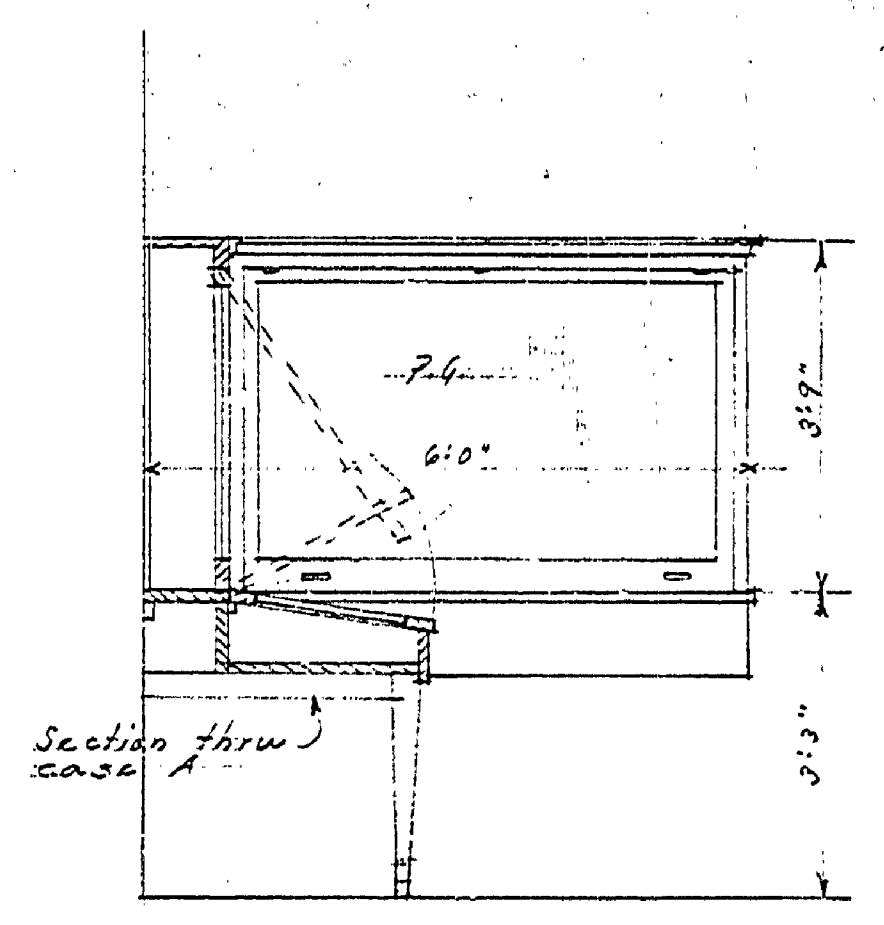
SECTION THRU CASE A, B, & C



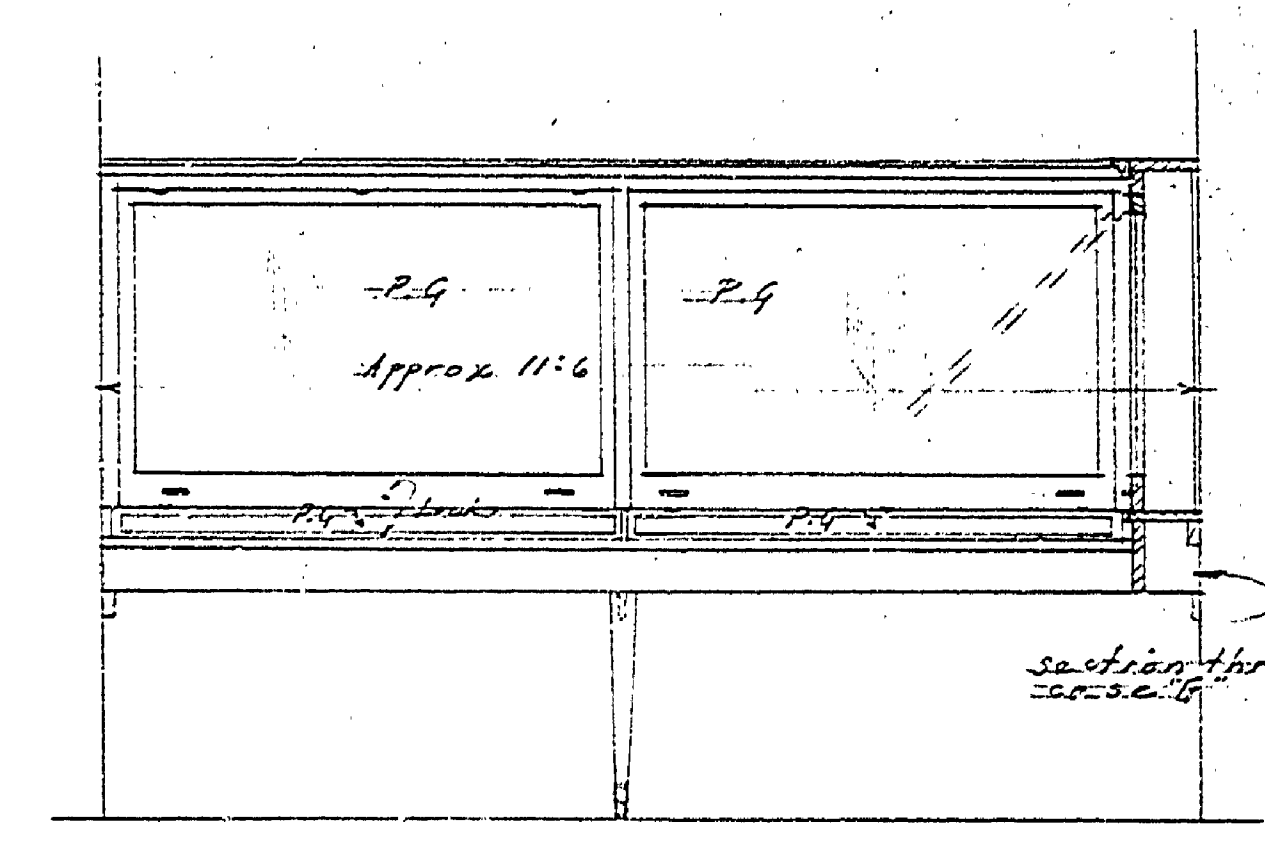
SECTION THRU CASE F



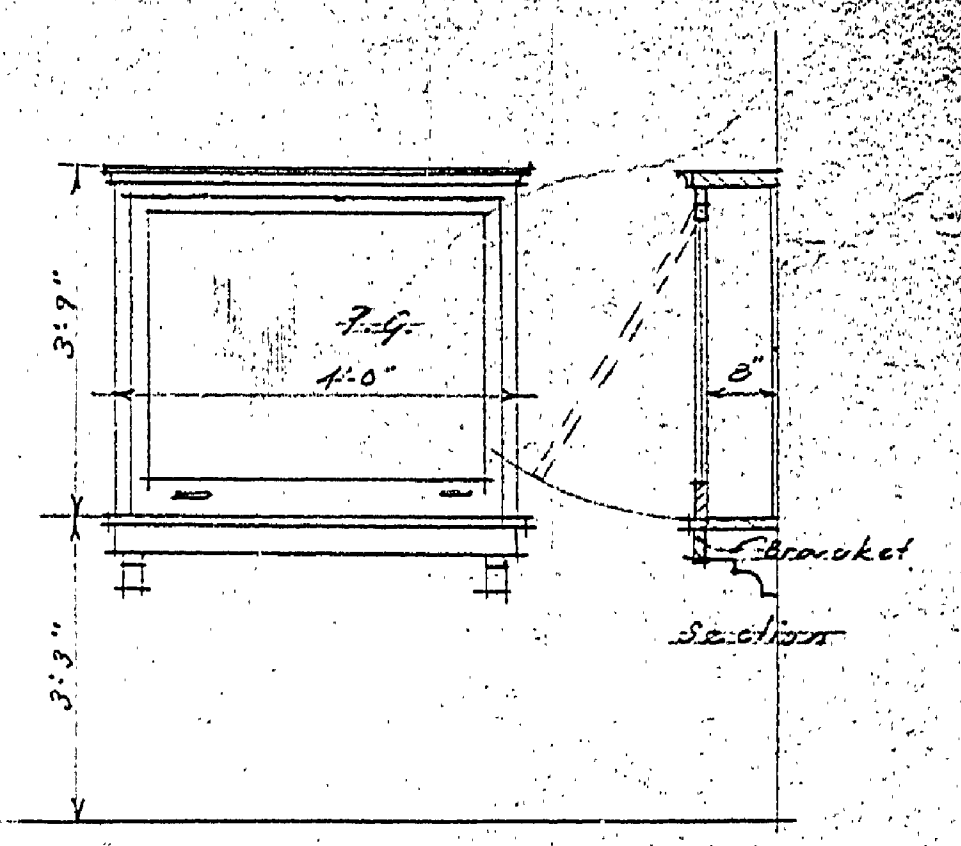
SECTION THRU CASE E



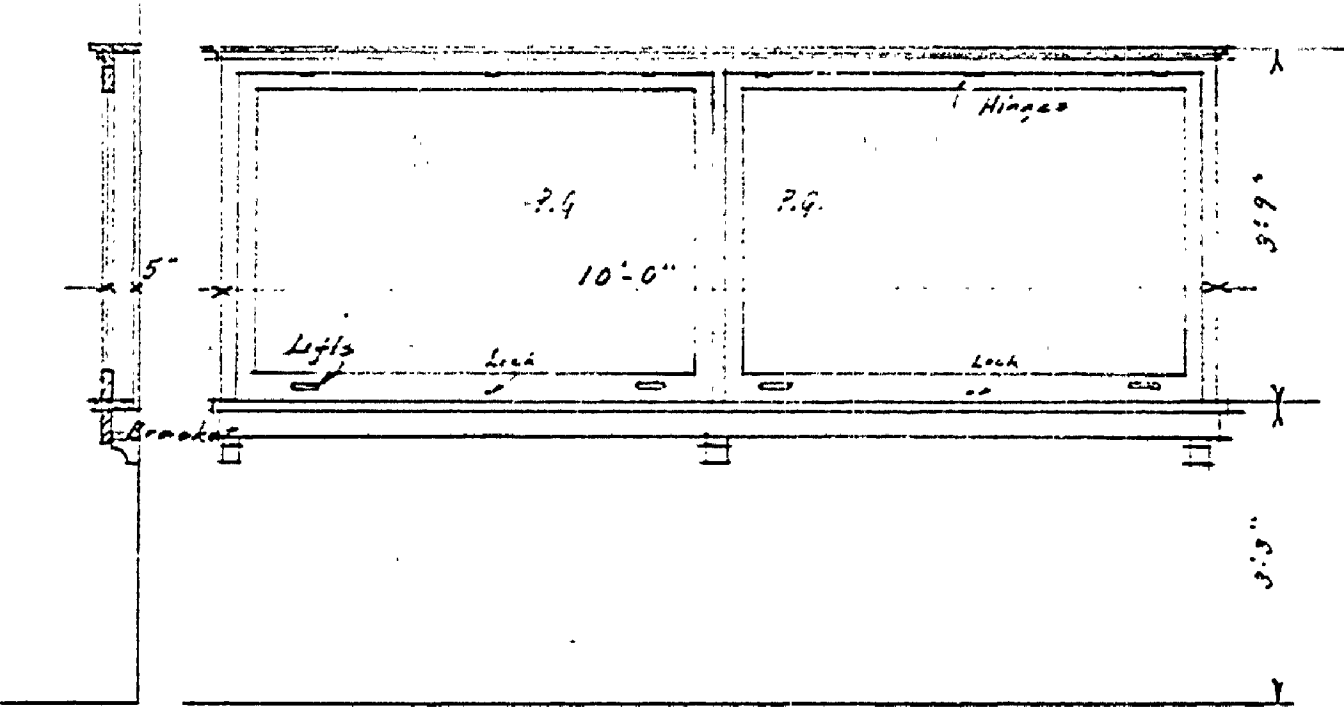
SECTION THRU CASE G



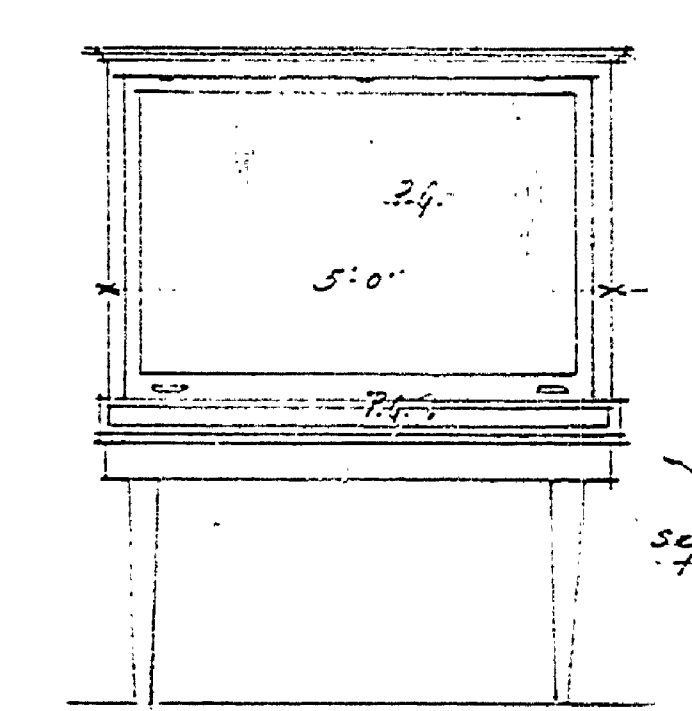
SECTION THRU CASE A



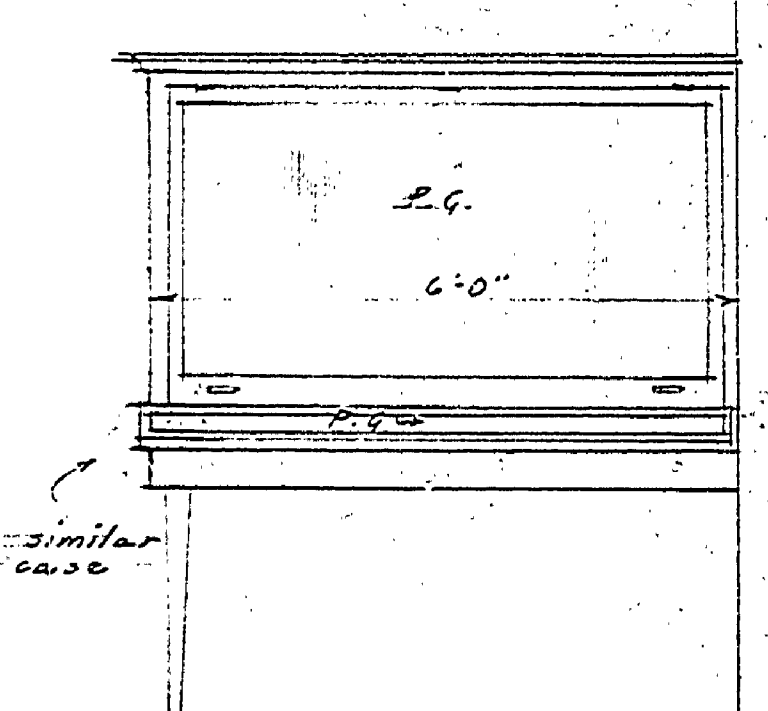
SECTION THRU CASE D



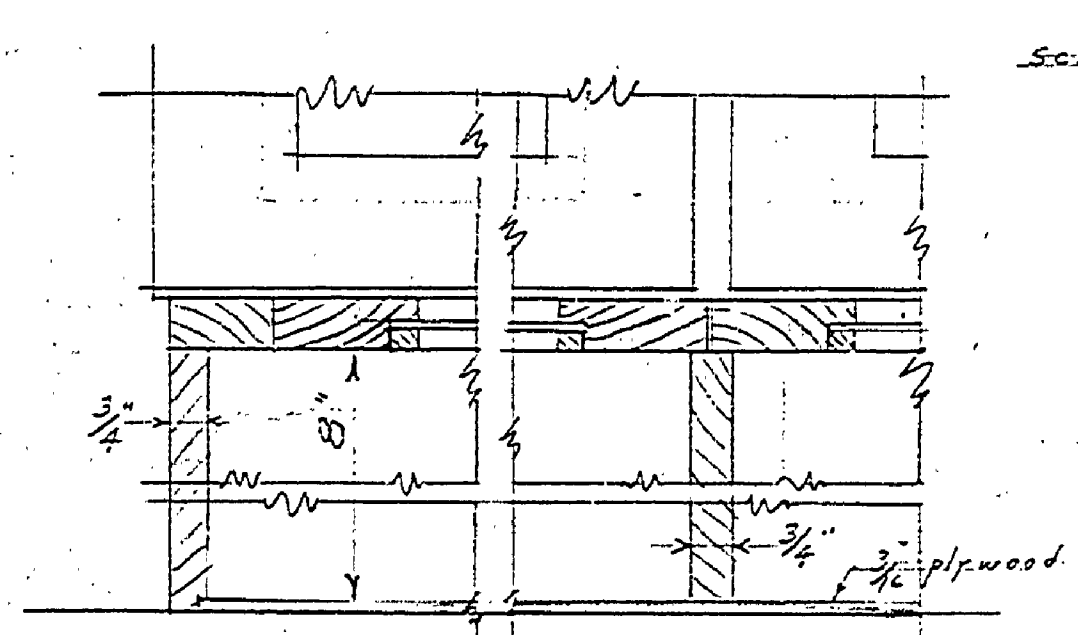
SECTION THRU CASE F



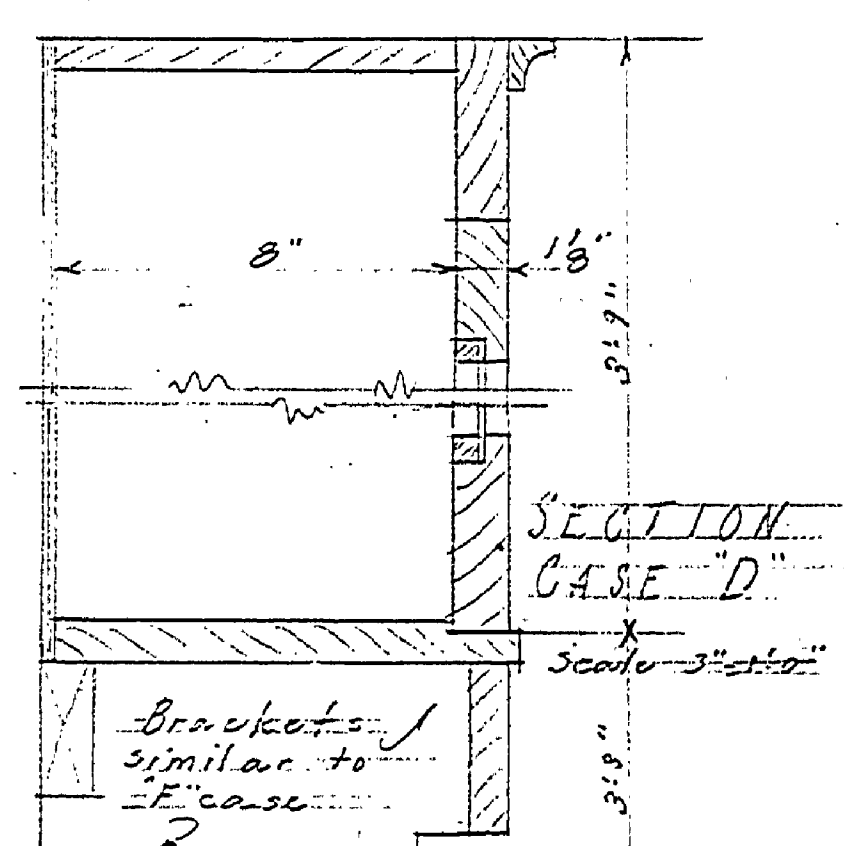
SECTION THRU CASE C



SECTION THRU CASE B



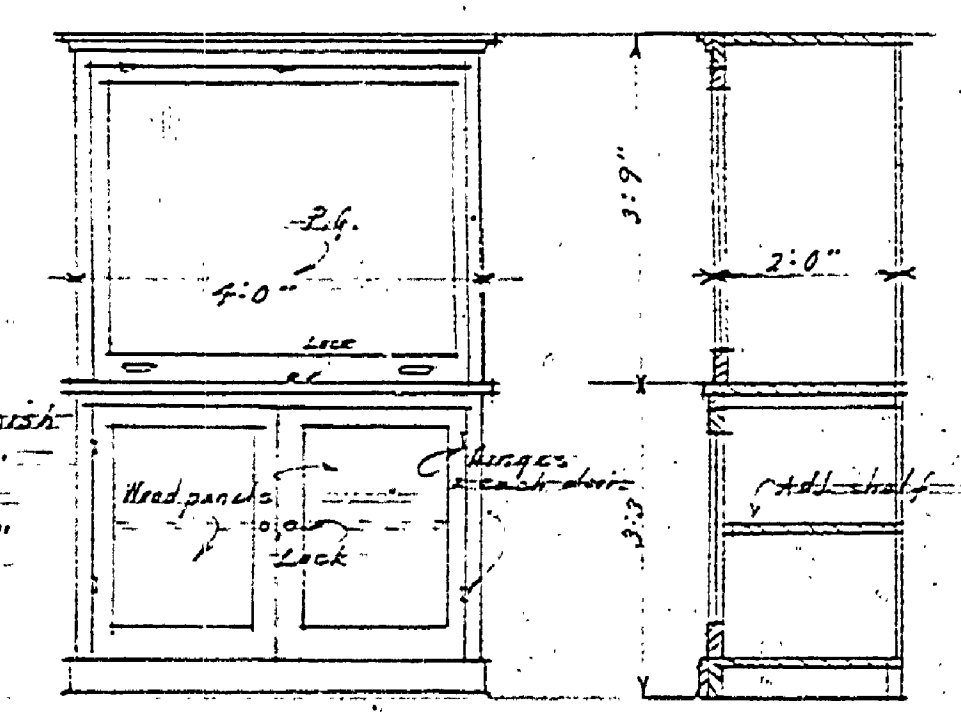
PLAN CASE A, B, & C



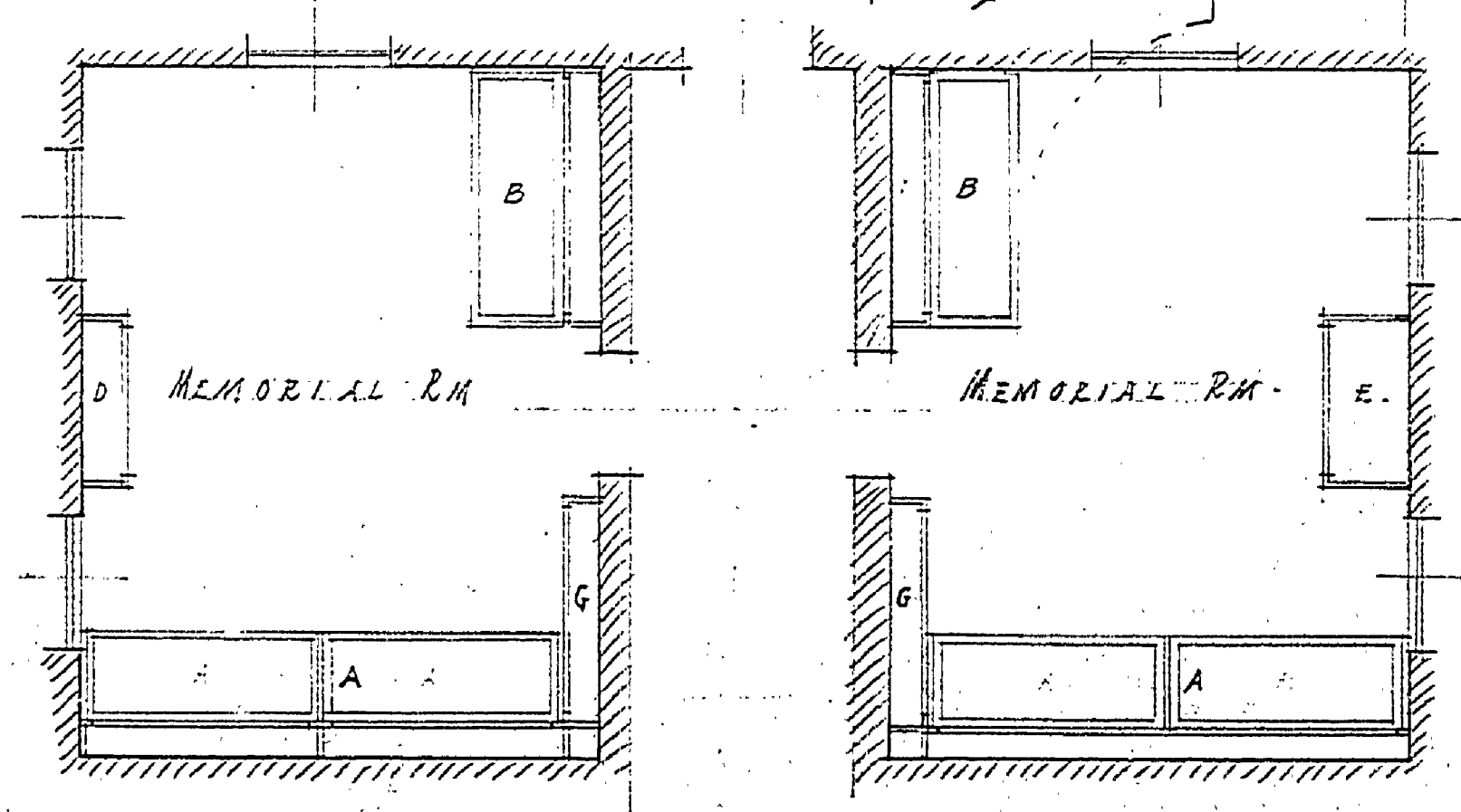
SECTION CASE D

NOTES:
 Finish wood work to be #2 white pine stained light brown with one coat of shellac.
 All cases to be built at mill in knock down form and assembled at job.
 All glass in horizontal display tops to be 1/2\"/>

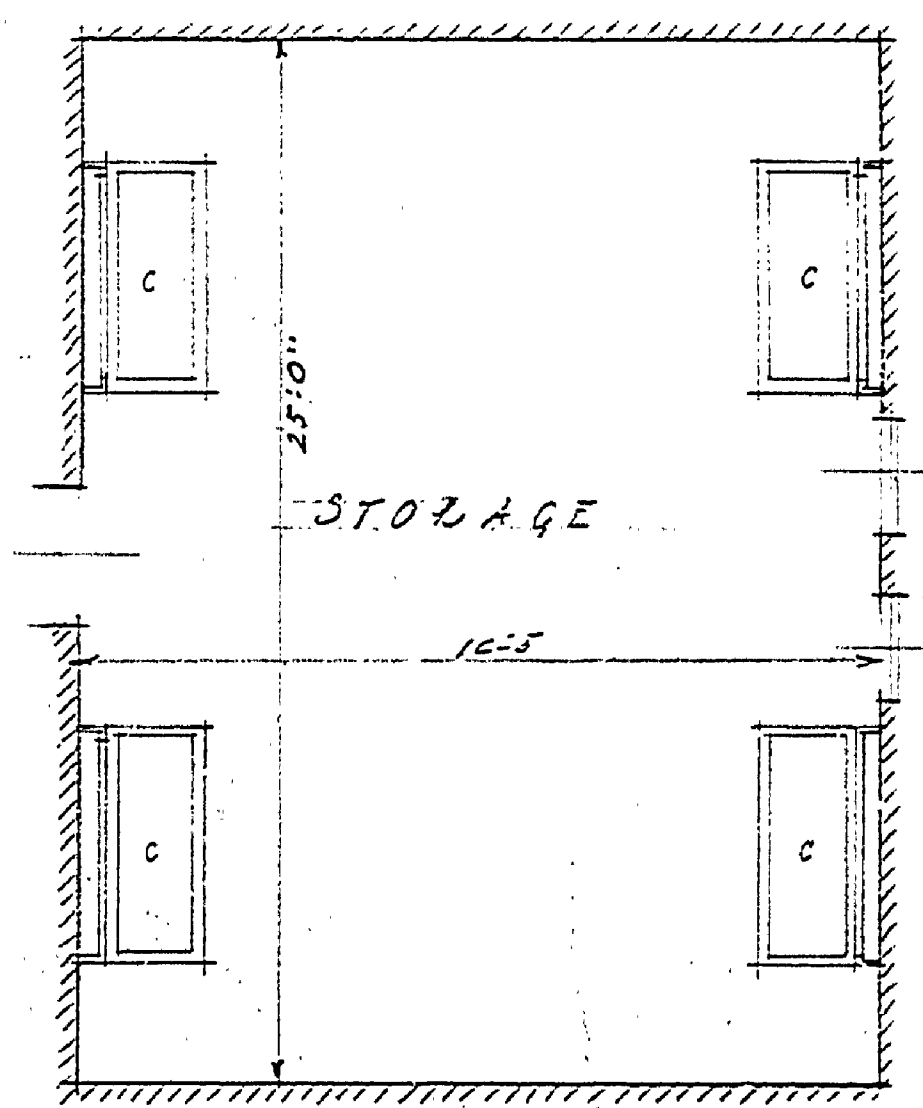
HARDWARE
 2 1/2\"/>



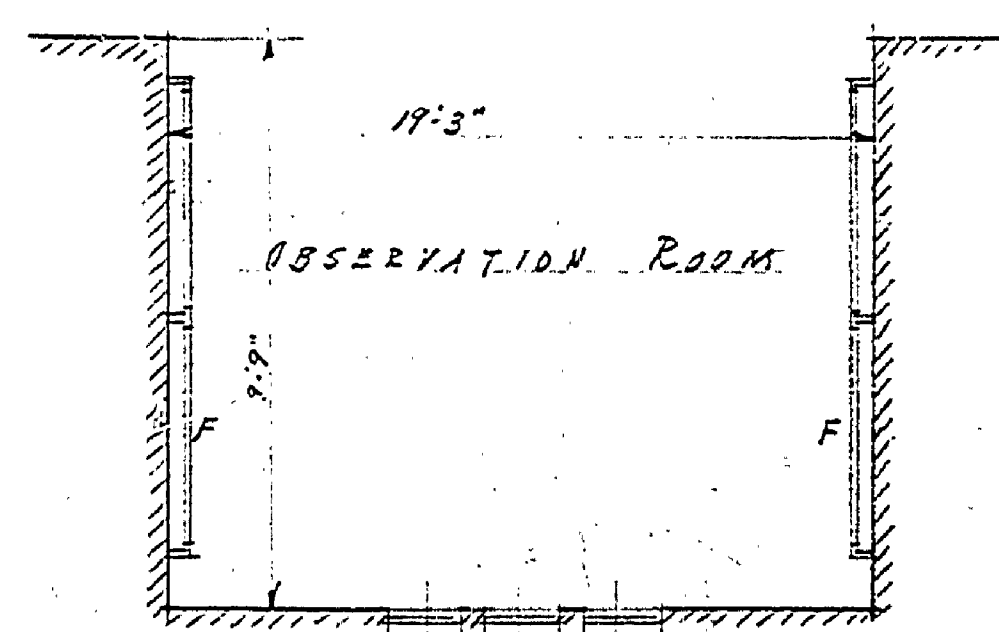
SECTION CASE E



PLAN OF MEMORIAL ROOM



PLAN OF STORAGE RM.



PLAN OF OBSERVATION RM

U.S. DEPARTMENT OF THE INTERIOR		STATE OF MICHIGAN	
NATIONAL PARK SERVICE		HARSHMAN PINES STATE PARK	
ESTATE PARK		EXHIBIT CASES MEMORIAL BUILDING	
EMERGENCY		PROJECT NO.	
CONSERVATION WORK		DATE	
DESIGNED BY	DISTRICT INSPECTOR	APPROVED BY	DISTRICT OFFICE
DATE		DATE	
APPROVED FOR CONSTRUCTION BY	DISTRICT OFFICE	APPROVED FOR CONSTRUCTION BY	DISTRICT OFFICE
DATE		DATE	
INSURANCE No. 5		MICHIGAN CONSTRUCTION CODE	

A-97