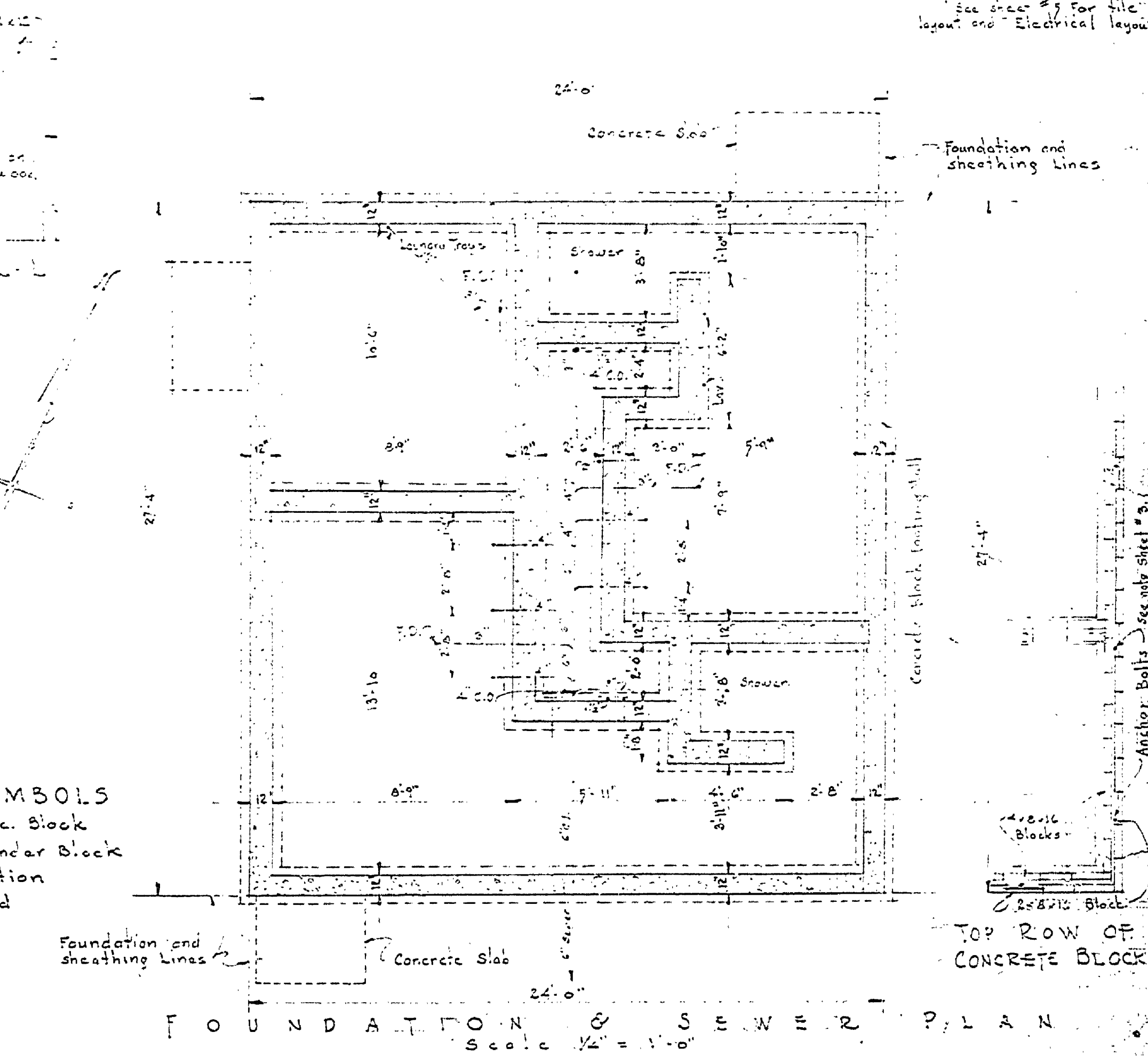
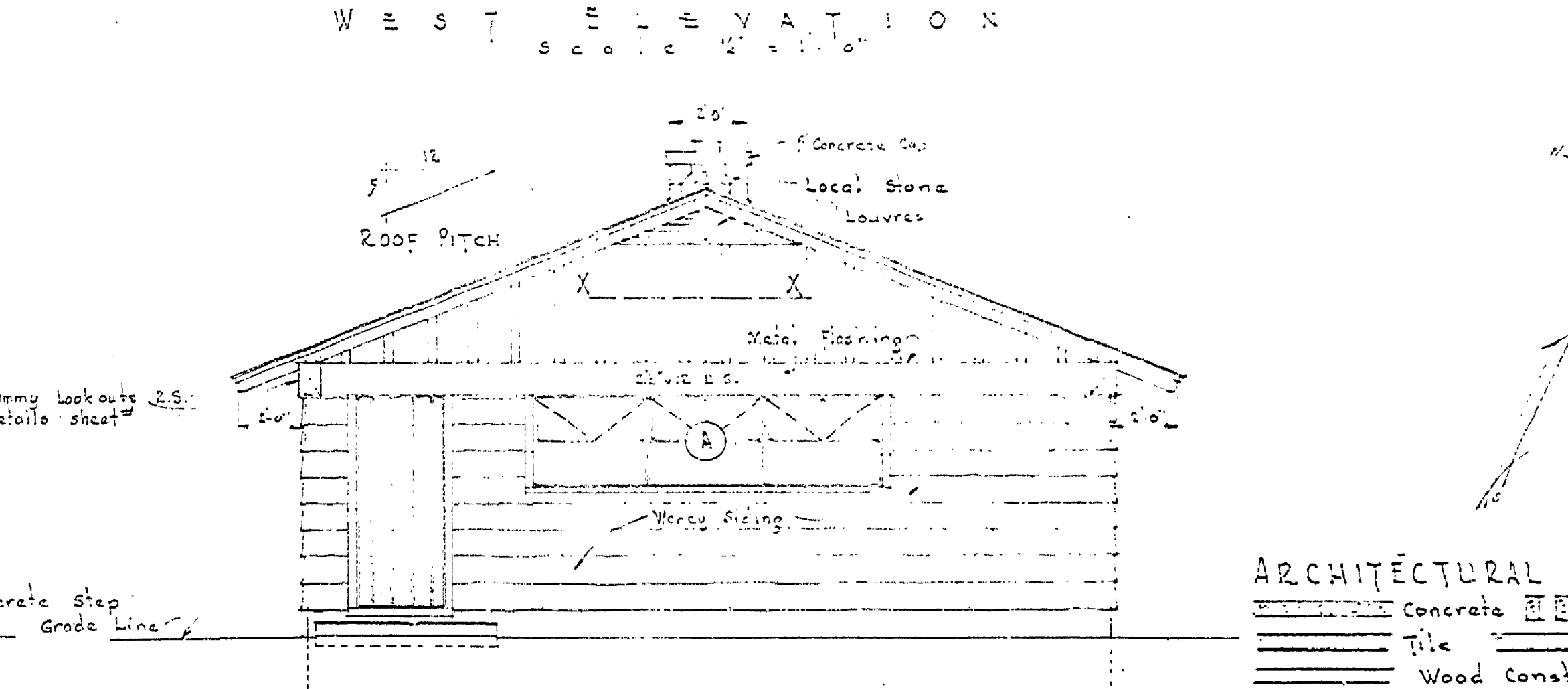
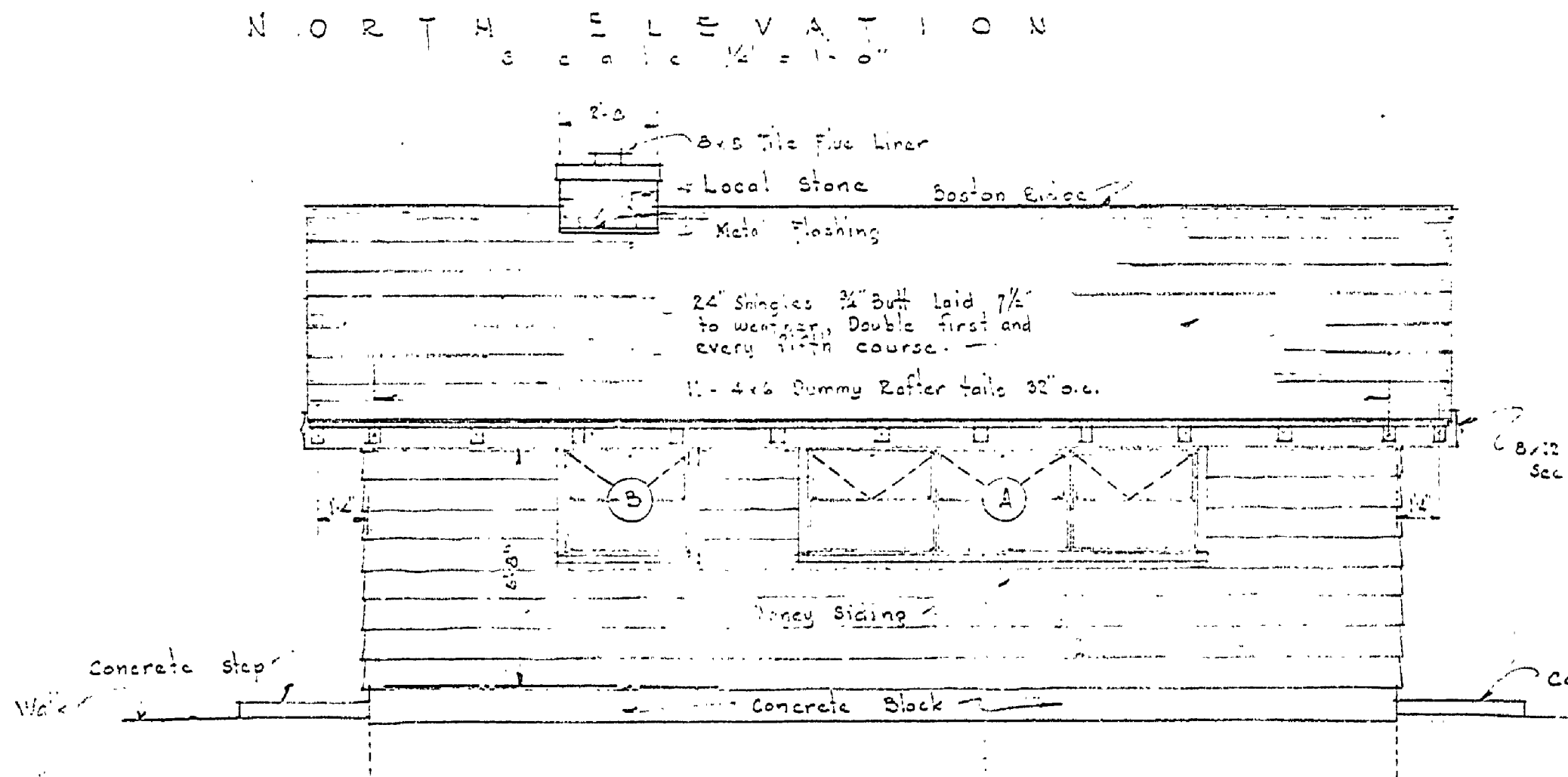
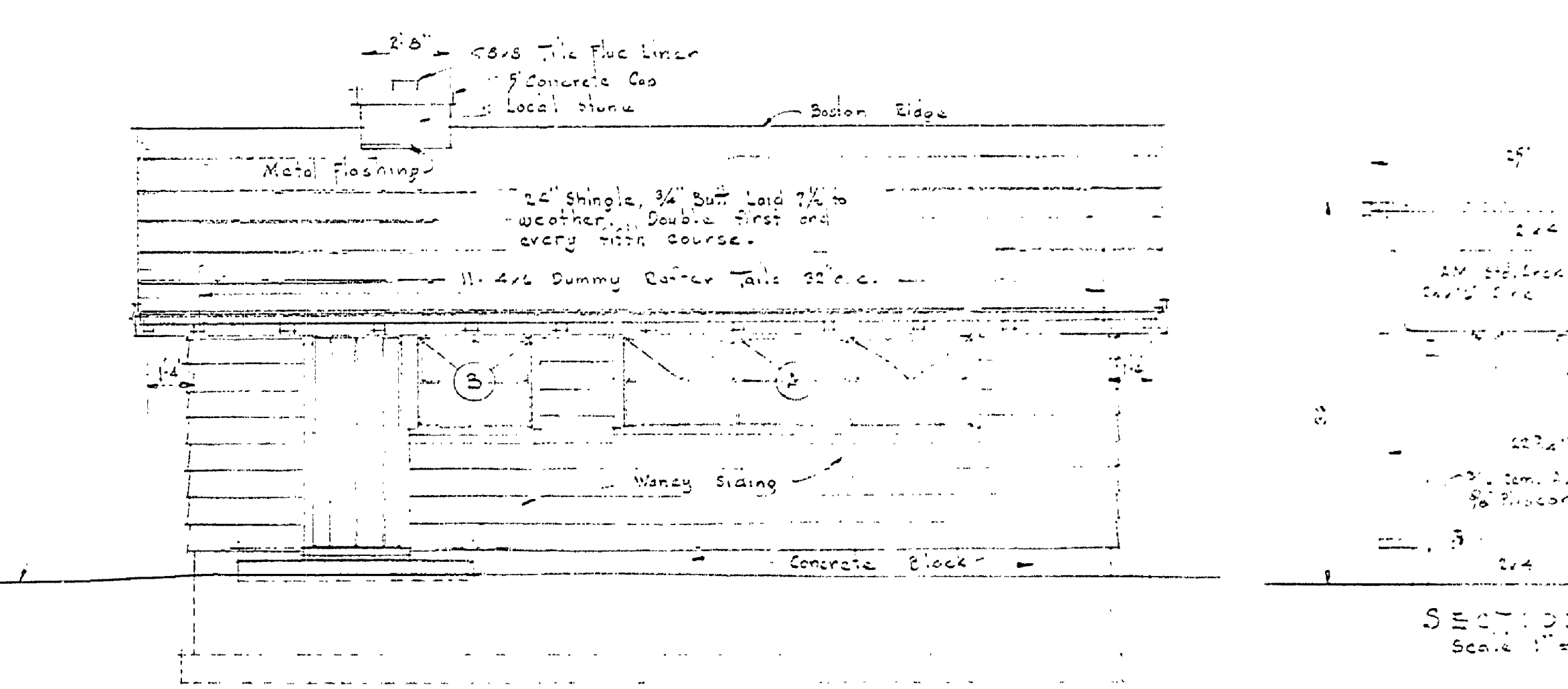
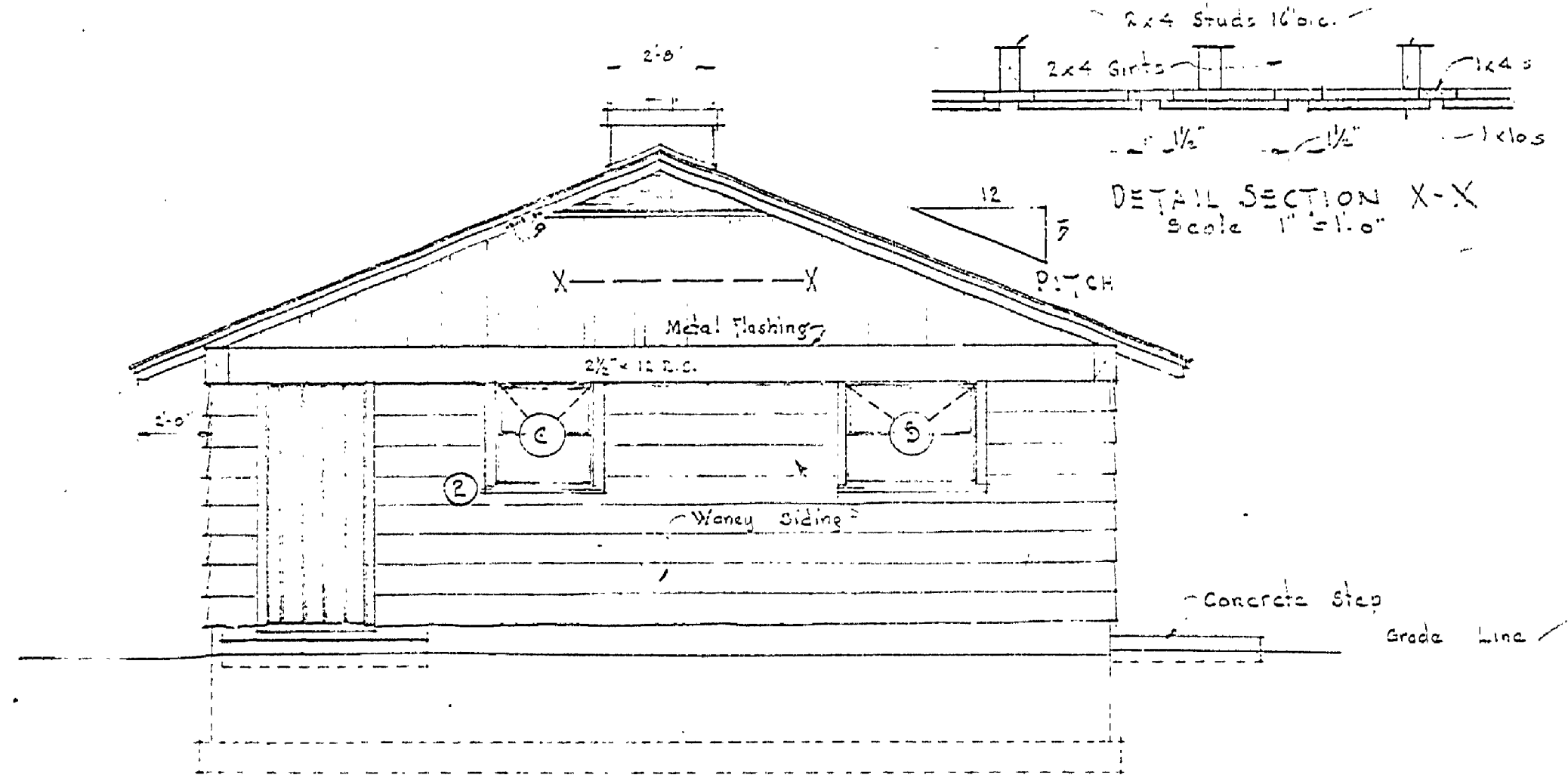
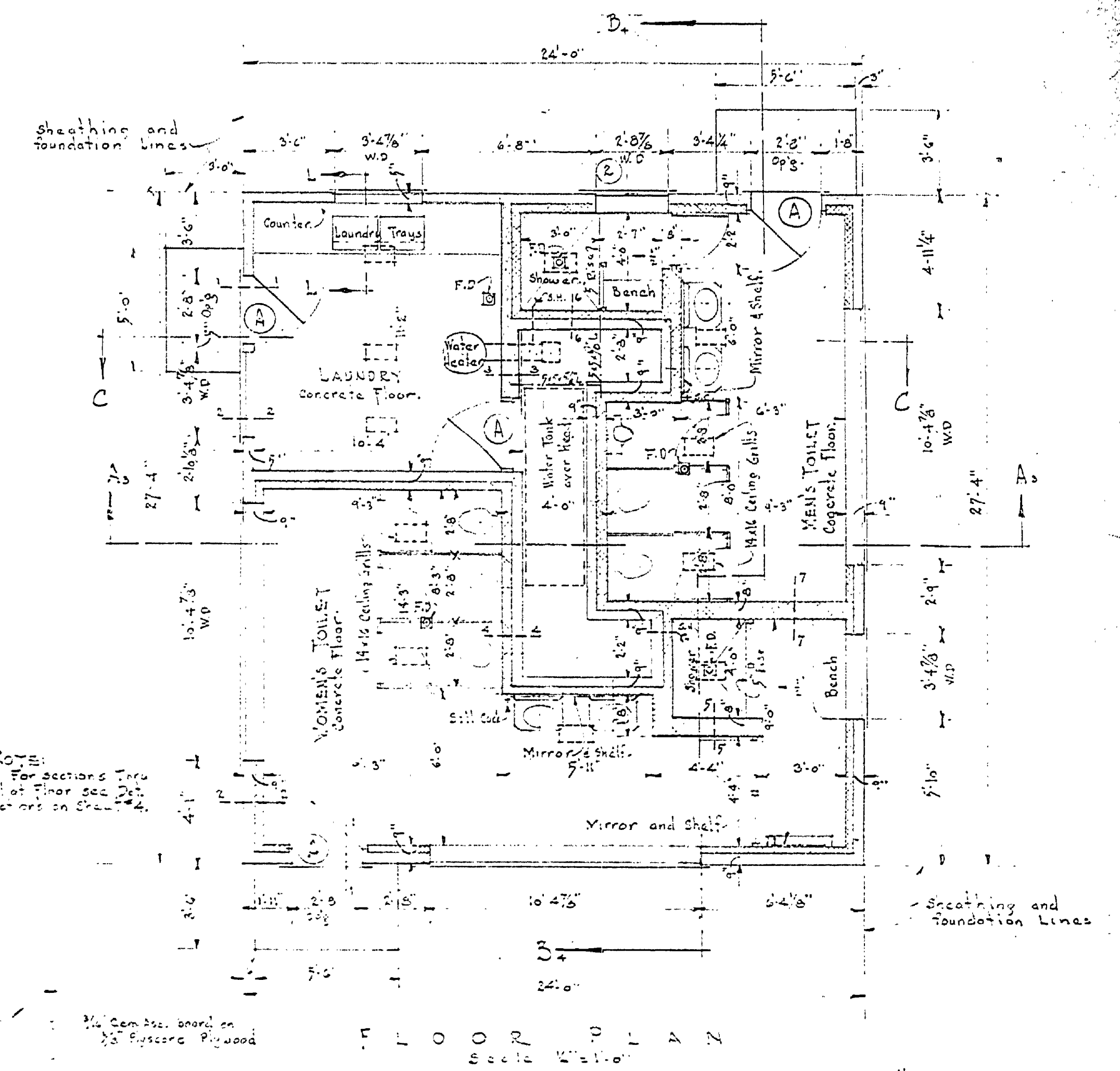
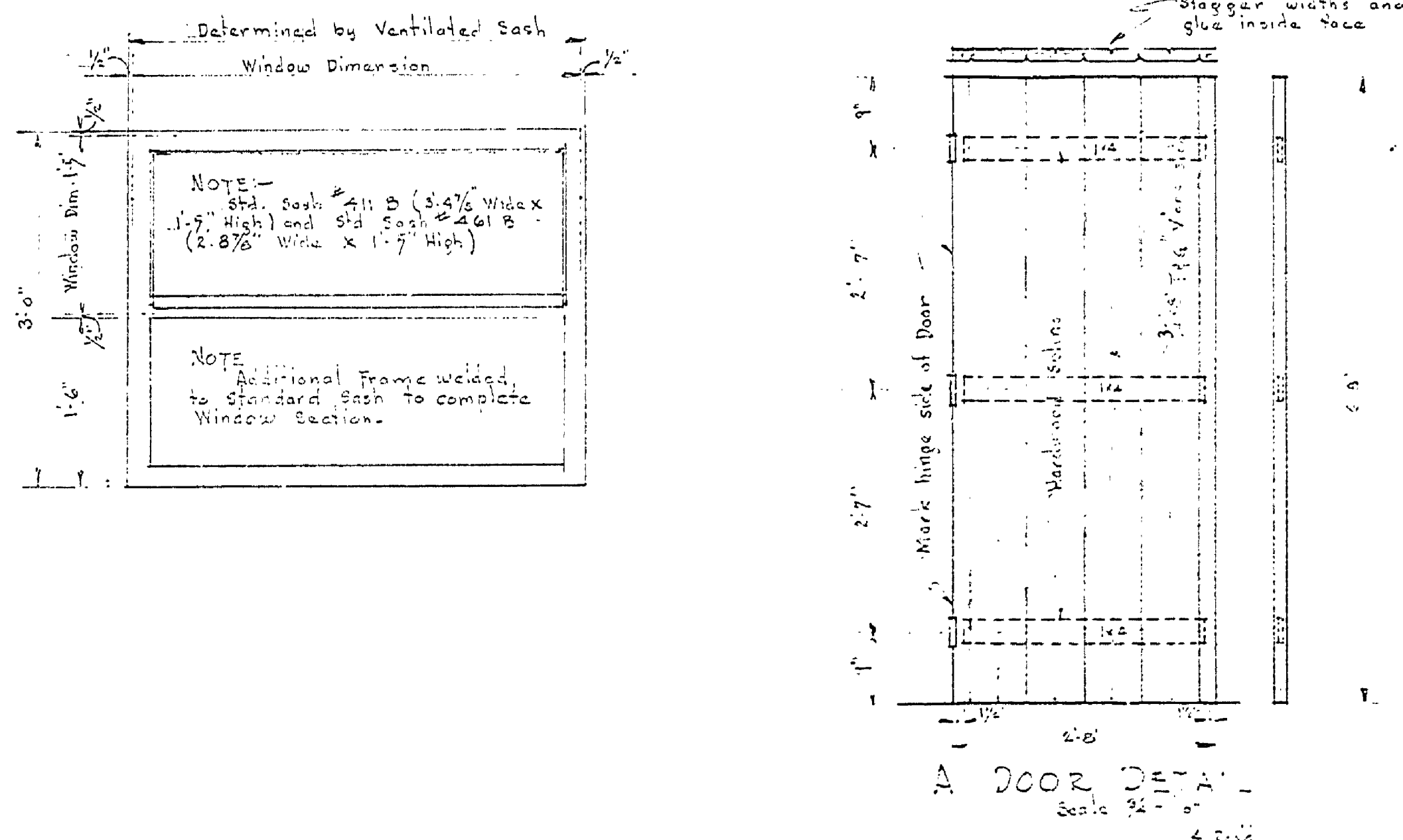


| NO. | DATE | BY | REVISIONS | |
|-----|---------|--------|-----------|------|
| | | | NO. | DATE |
| 1 | 7/21/53 | J.M.T. | 4 | |
| 2 | 7/21/53 | J.M.T. | 5 | |
| 3 | | | 6 | |

| FINISH SCHEDULE | | | | | |
|-----------------|----------|------|----------------------------|---------------------|----------------|
| ROOM | FLOOR | BASE | WALLS | CEILING | PAINTED |
| Women's Toilet | Concrete | Tile | Tile & Cement Asst. Bd. | 3/4" Cem. Asst. Bd. | Painting |
| Men's Toilet | Concrete | Tile | Tile & Cement Asst. Bd. | 3/4" Cem. Asst. Bd. | Painting |
| Laundry | Concrete | Wood | Cinder Blk. Cem. Asst. Bd. | 3/4" Cem. Asst. Bd. | Painting |
| Women's Shower | Concrete | Tile | Tile & Cem. Asst. Bd. | 3/4" Cem. Asst. Bd. | Cem. Asst. Bd. |
| Men's Shower | Concrete | Tile | Tile & Cem. Asst. Bd. | 3/4" Cem. Asst. Bd. | Cem. Asst. Bd. |

| WINDOW SCHEDULE | | | | | | | | | | |
|-----------------|-----|----------------------|------------|--------|-----------|--------|-------|---------|----------|---------|
| WK | No. | CATALOGUE No. | WIDTH | HEIGHT | No LIGHTS | VENTED | FIXED | SCREENS | Mullions | REMARKS |
| A | 3 | 3 Units of 4-118 Box | 16'-4 1/2" | 2'-11" | 4 | Upper | Lower | ✓ | 2-0 | |
| B | 8 | 1 Unit of 4-118 Box | 8'-4 1/2" | 2'-11" | 2 | | | | | |
| C | 1 | 1 Unit of 4-118 Box | 2'-8 3/8" | 2'-11" | 2 | | | | | |

NOTE:-
 All exterior wood to be stained with clear creosote oil with enough Carbo-Jota creosote added to obtain a light brown color. It is the intent to get a light weathered effect.
 All steel sash to have two (2) coats of black house paint.
 All shingles to be stained with Carbo-Jota creosote by the emersion method.
 All interior Cement Asbestos board or Cement Asbestos tile shall be painted with two (2) coats of rubber base interior paint, light cream color.
 All interior Cinder blocks to have a wash coat of sand and cement to fill pores of blocks, followed by two (2) coats of rubber base interior paint, light cream color.
 All exterior door frame and trim to be painted two (2) coats oil and lead house paint, color to match the color of walls.
 Interior doors to be left natural color and Varnished with (2) coats of Satinac. (Satinac distributed by the U.S. Plywood Corp.)



- ARCHITECTURAL SYMBOLS**
- Concrete
 - Concrete Block
 - Tile
 - Cinder Block
 - Wood Construction
 - Dimension Wood
 - Brick
 - stone
 - S.H. Shower Head
 - S.C. Sill cock