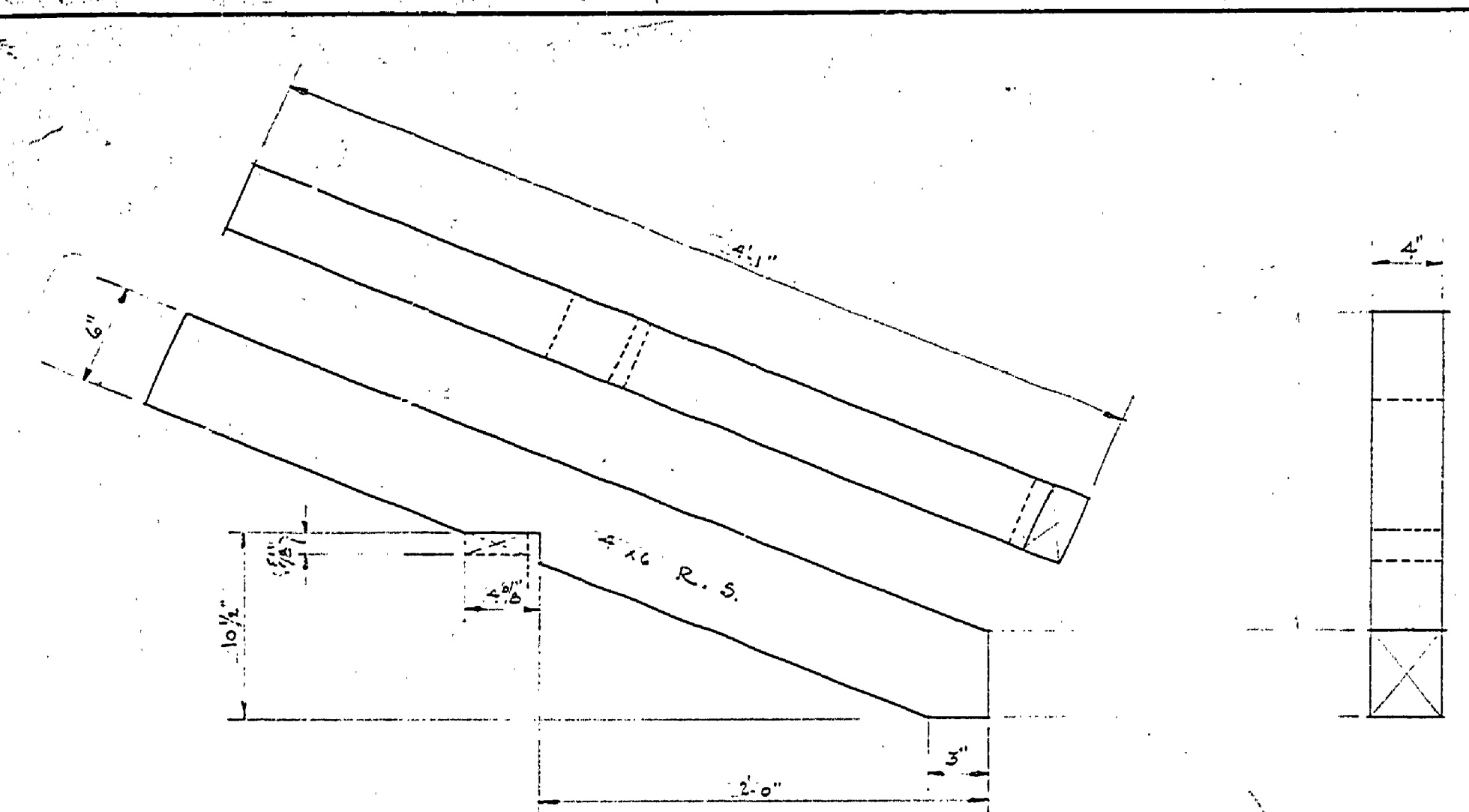
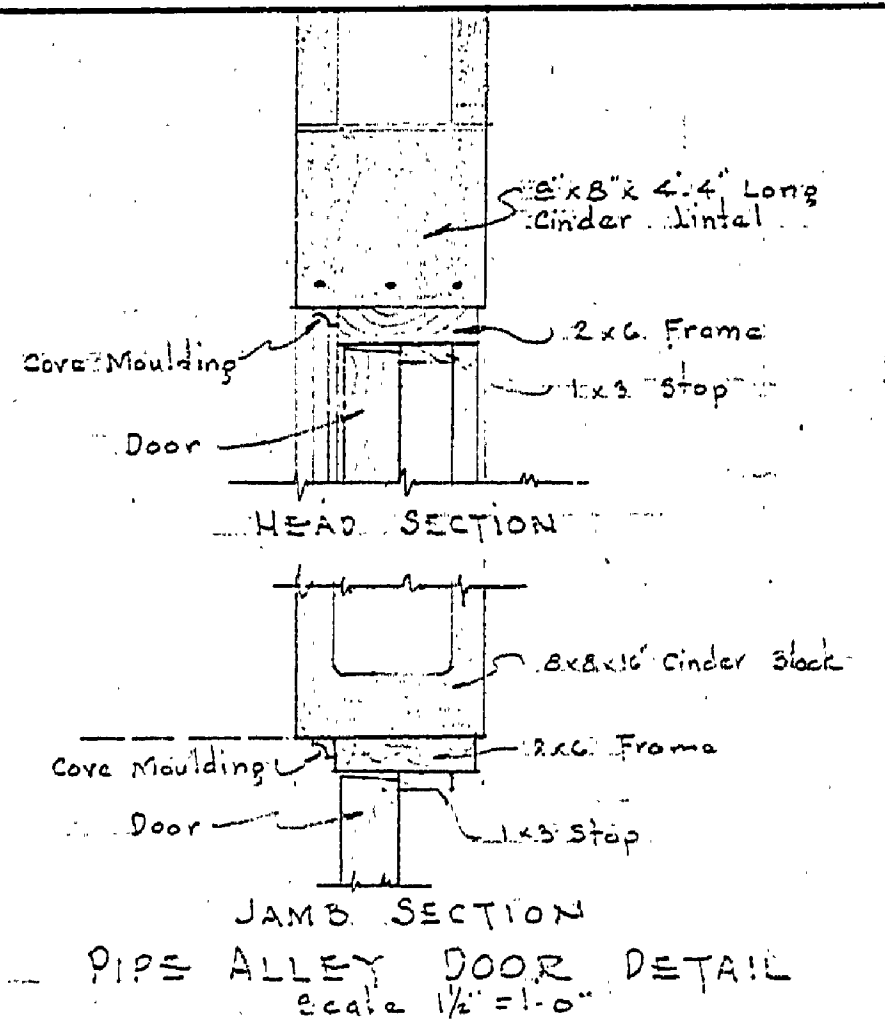


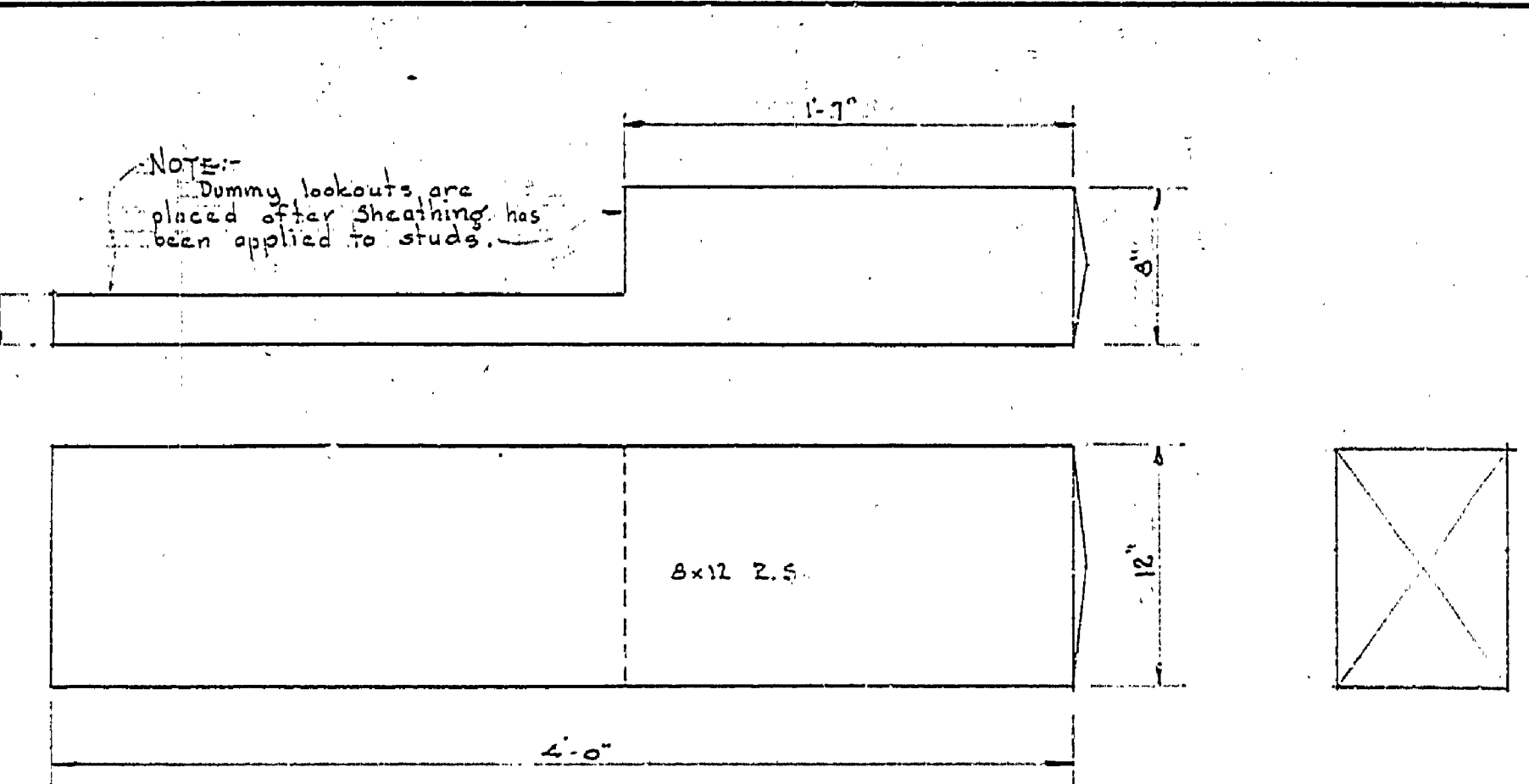
DRAWN BY J. W. F. CHECKED BY P. S. J. - E. S. DATE	REVIEWED BY SECTIONS			APPROVED BY		
	ARCHITECTURAL	ENGINEERING	LANDSCAPE	ASSISTANT CHIEF IN CHARGE OF DESIGN		
	DATE	DATE	DATE	DATE		
	NO.	DATE	BY	NO. DATE BY		
	1	9/11/53	J.W.F.	4		
	2			5		
3			6			



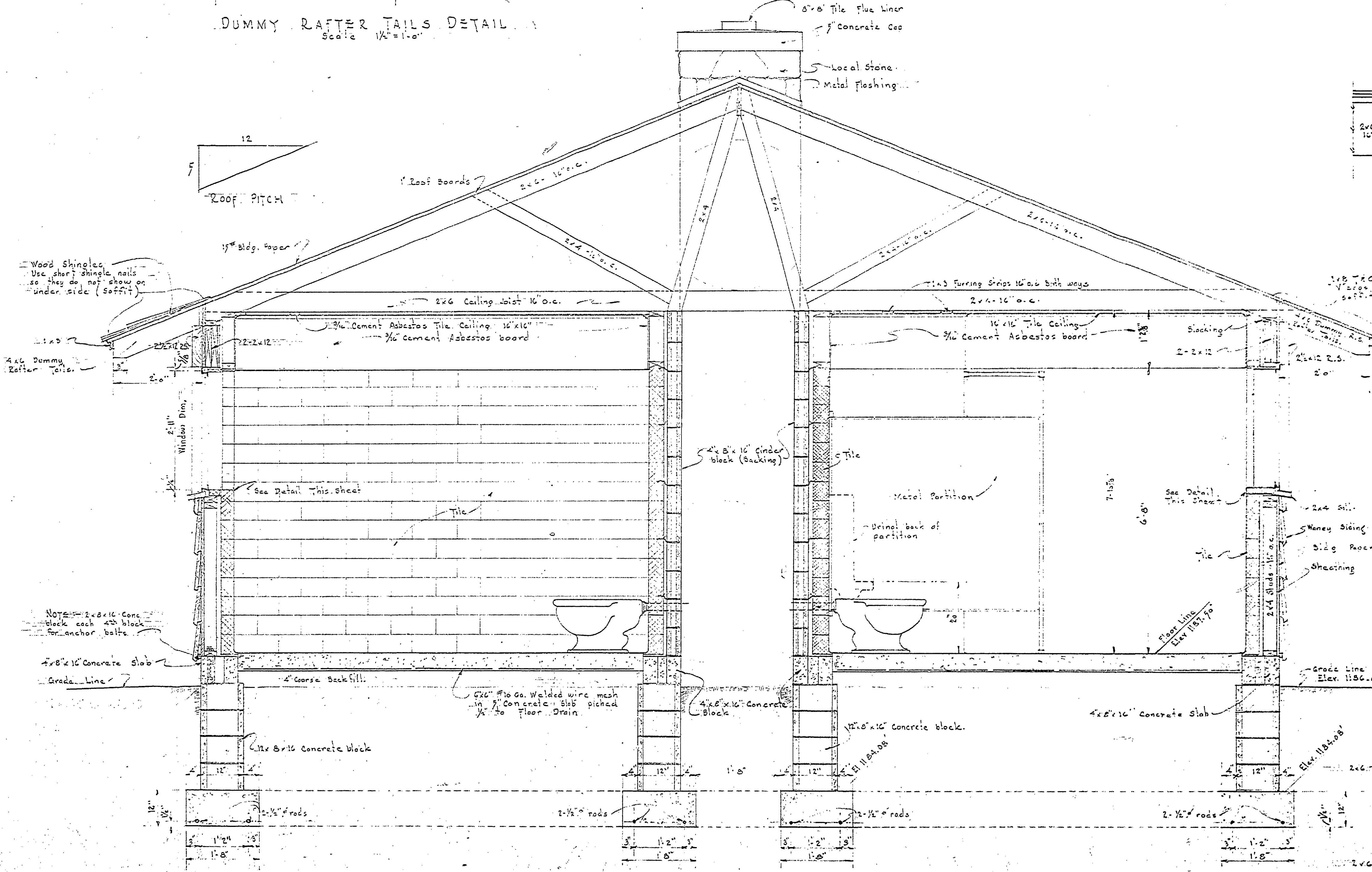
DUMMY RAFTER TAILS DETAIL  
Scale 1/4" = 1'-0"



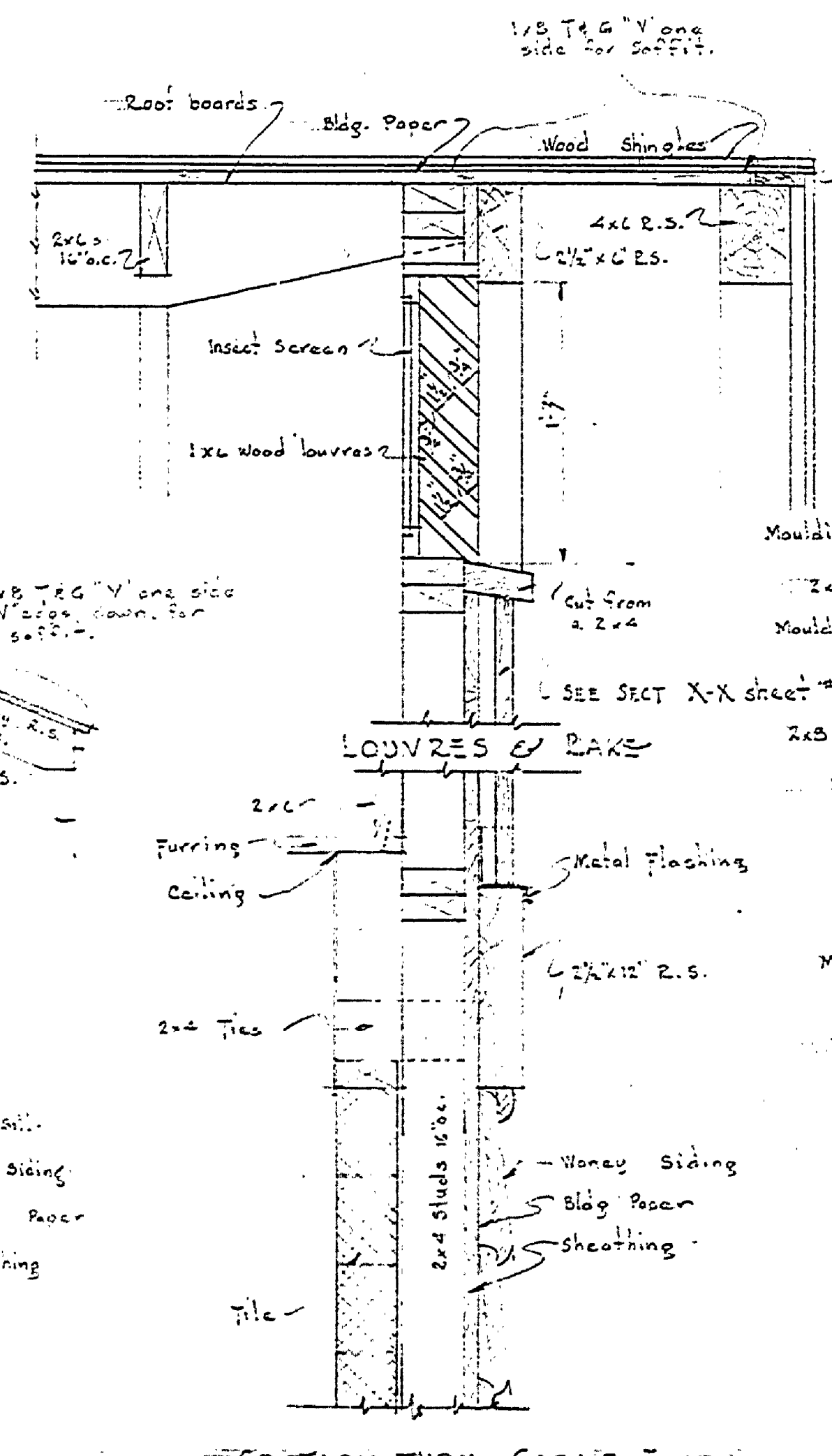
PIPE ALLEY DOOR DETAIL  
Scale 1/4" = 1'-0"



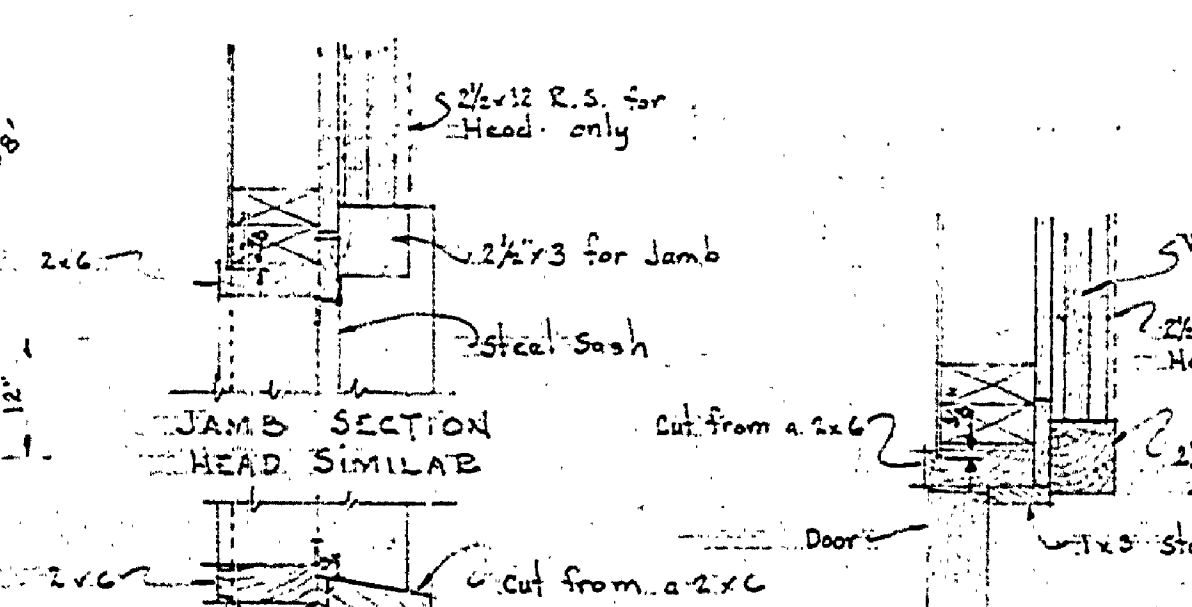
DUMMY LOOKOUT DETAIL  
Scale 1/4" = 1'-0"



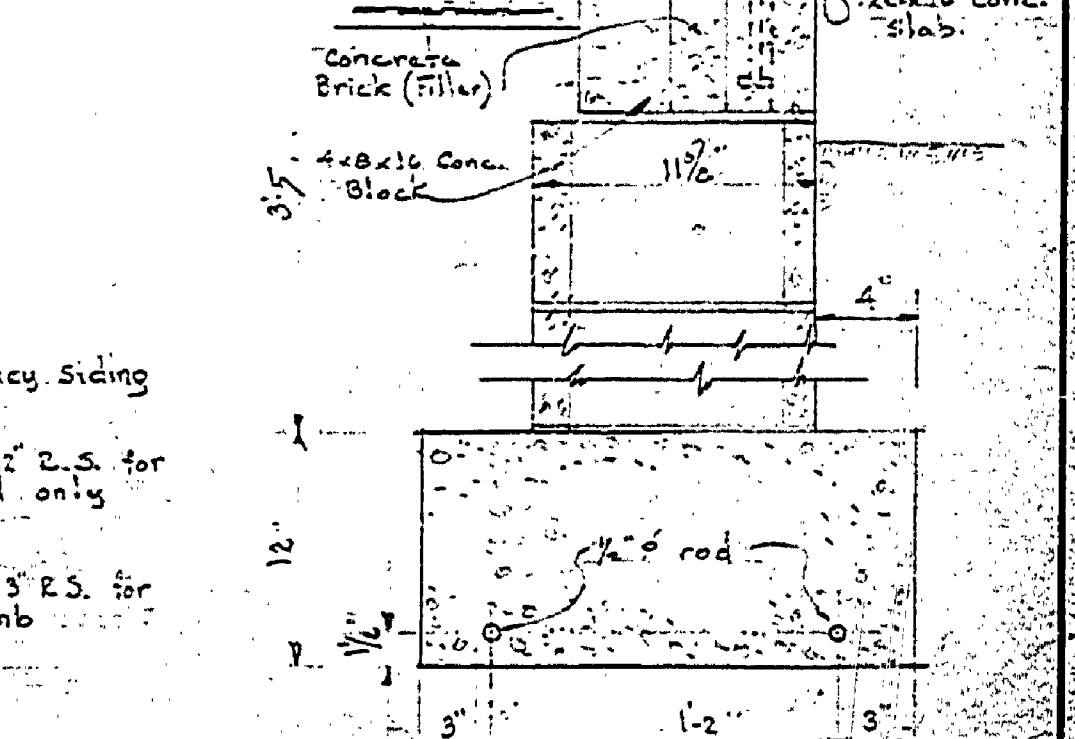
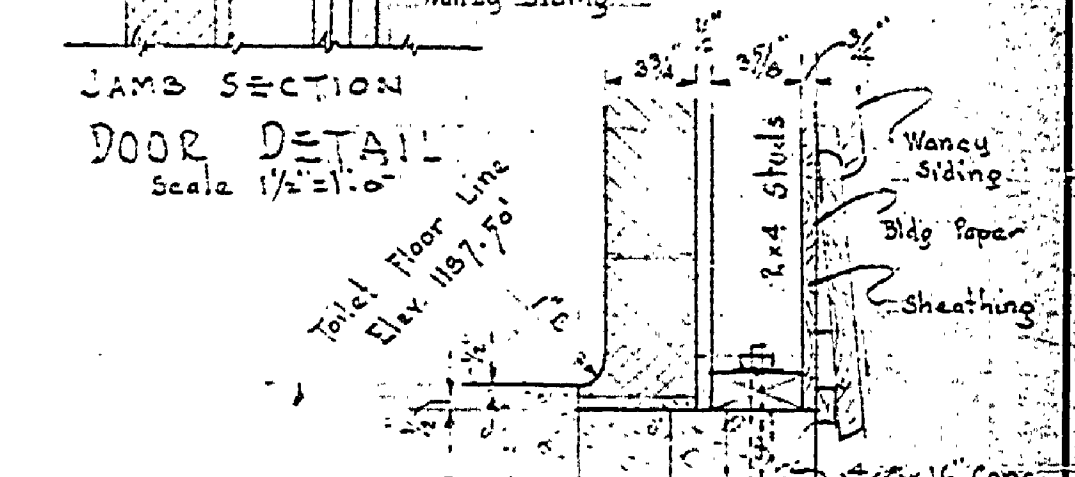
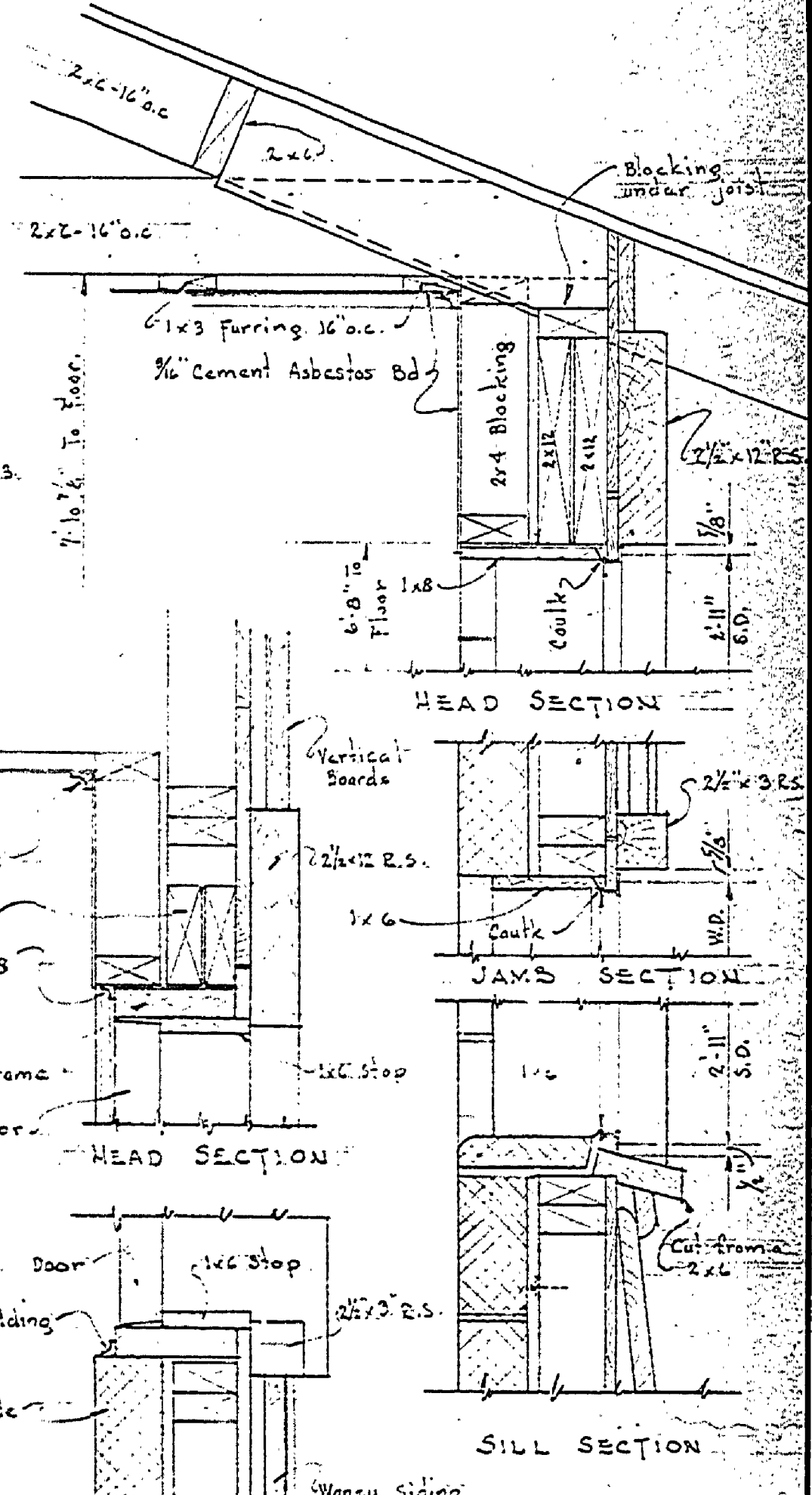
SECTION A-A  
Scale 3/4" = 1'-0"



SECTION THRU GABLE END  
Scale 1/4" = 1'-0"



LAUNDRY DOOR & WINDOW DETAIL  
Scale 1/4" = 1'-0"



TYPICAL WALL SECTION  
Scale 1/4" = 1'-0"

NOTE: Wood Shingles Use short shingle nails so they do not show on under side (soffit)

NOTE: 2x8x16 Concrete block each 4x8 block for anchor bolts

NOTE: Dummy lookouts are placed after sheathing has been applied to studs

DESIGNED BY  
 J. W. F.  
 DRAWN BY  
 J. W. F.  
 CHECKED BY  
 P. S. J. - E. S.  
 DATE

MICHIGAN DEPARTMENT OF CONSERVATION PARKS AND RECREATION DIVISION

HARTWICK PINES STATE PARK TOILET, LAUNDRY AND SHOWER BUILDING CAMP GROUND

SHEET NO. 3 OF 7 PLAN NO. A-101