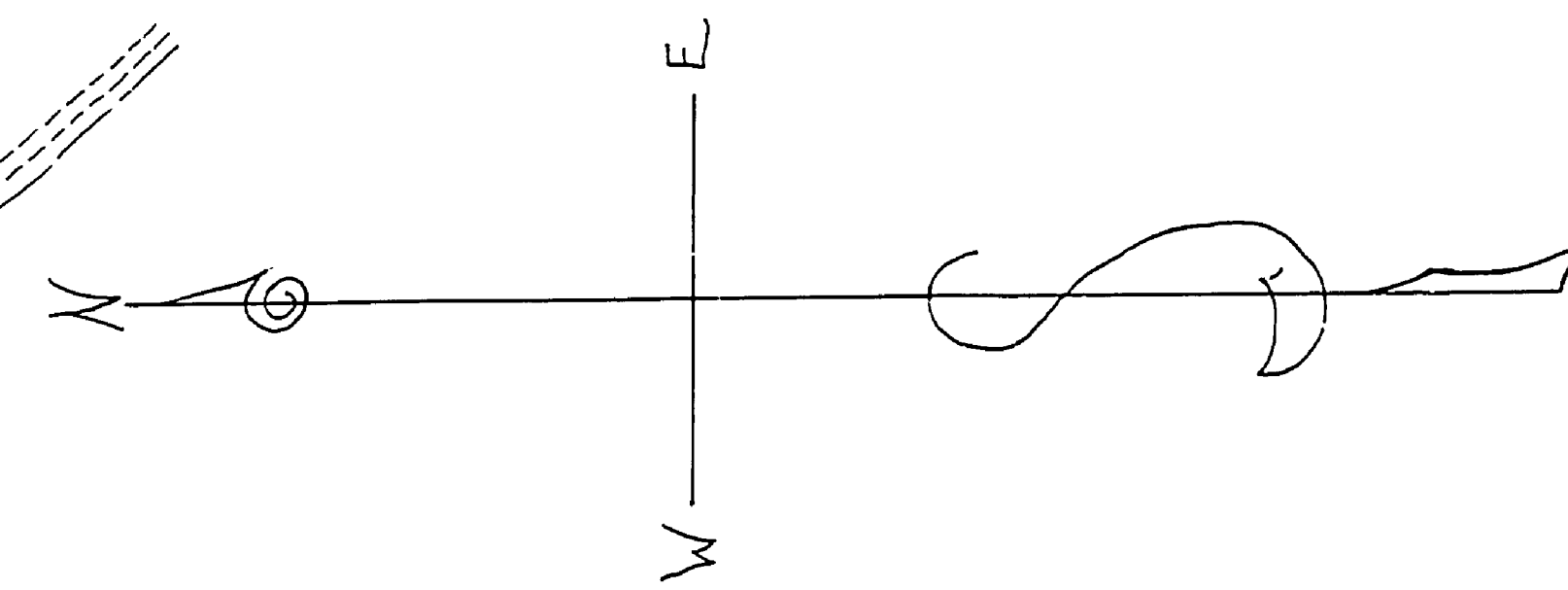
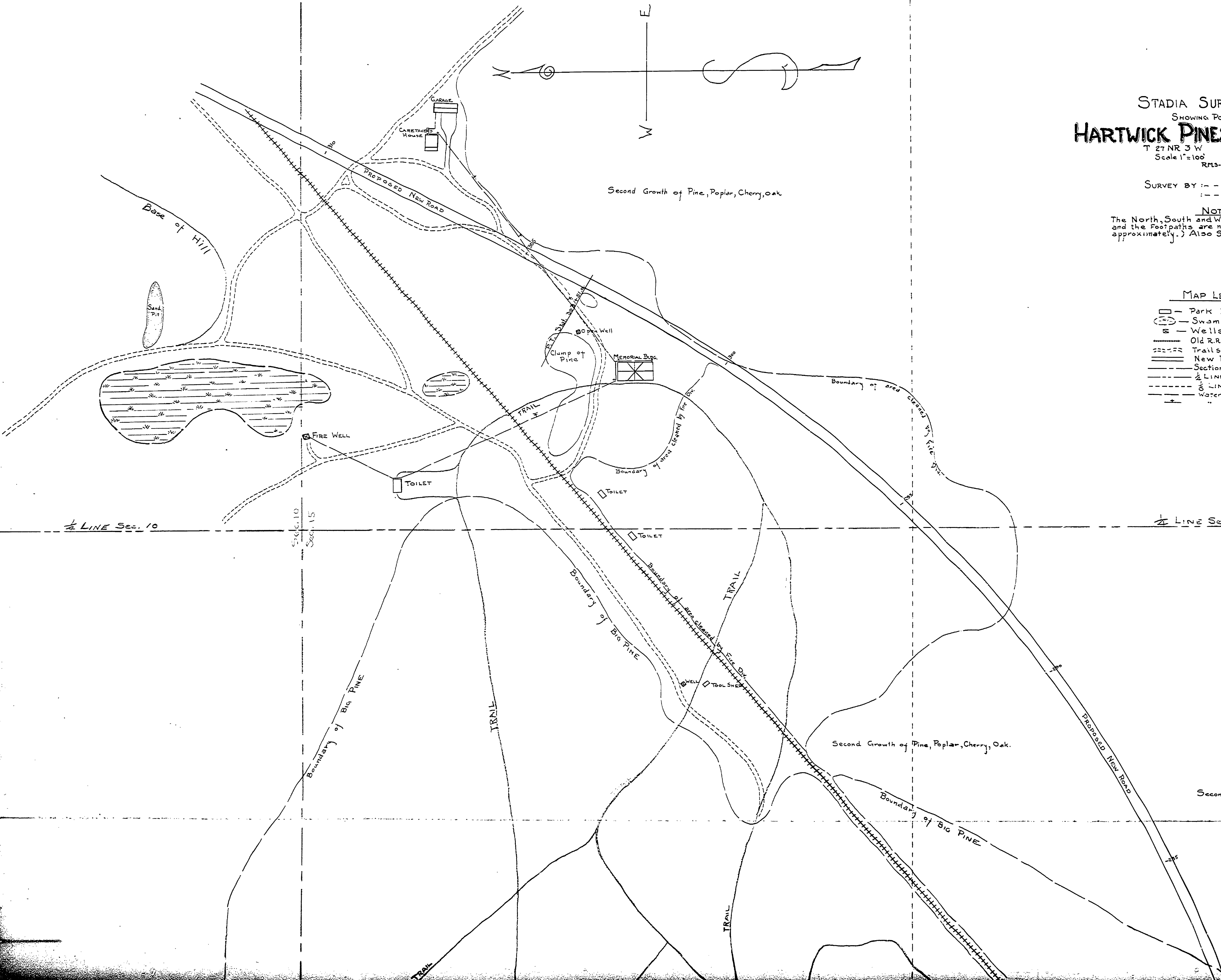


E 1/2 LINE Sec. 10.

E 1/2 LINE Sec. 15

E 1/2 LINE Sec. 15



STADIA SURVEY MAP
SHOWING PORTION OF
HARTWICK PINES STATE PARK

T 27 NR 3 W CRAWFORD Co.
Scale 1"=100' JULY-3-31.
RMS-JJR.

SURVEY BY: -- JOHN I. ROGERS
-- GEORGE GRANGER

NOTE
The North, South and West boundaries of Pines and the Footpaths are not located accurately (only approximately.) Also Section Lines.

MAP LEGEND

- - Park Buildings
- ⊖ - Swamp
- ⊙ - Wells
- - Old R.R. Grade
- - Trails
- - New Park Road
- - Section Lines
- - 1/2 LINE
- - 1/4 LINE
- - Water Line
- - " " Outlet

FRAME I & II
E-100

1/4 LINE Sec. 15

1/2 LINE Sec. 10

1/2 LINE Sec. 15

1/4

Handwritten note: E-100