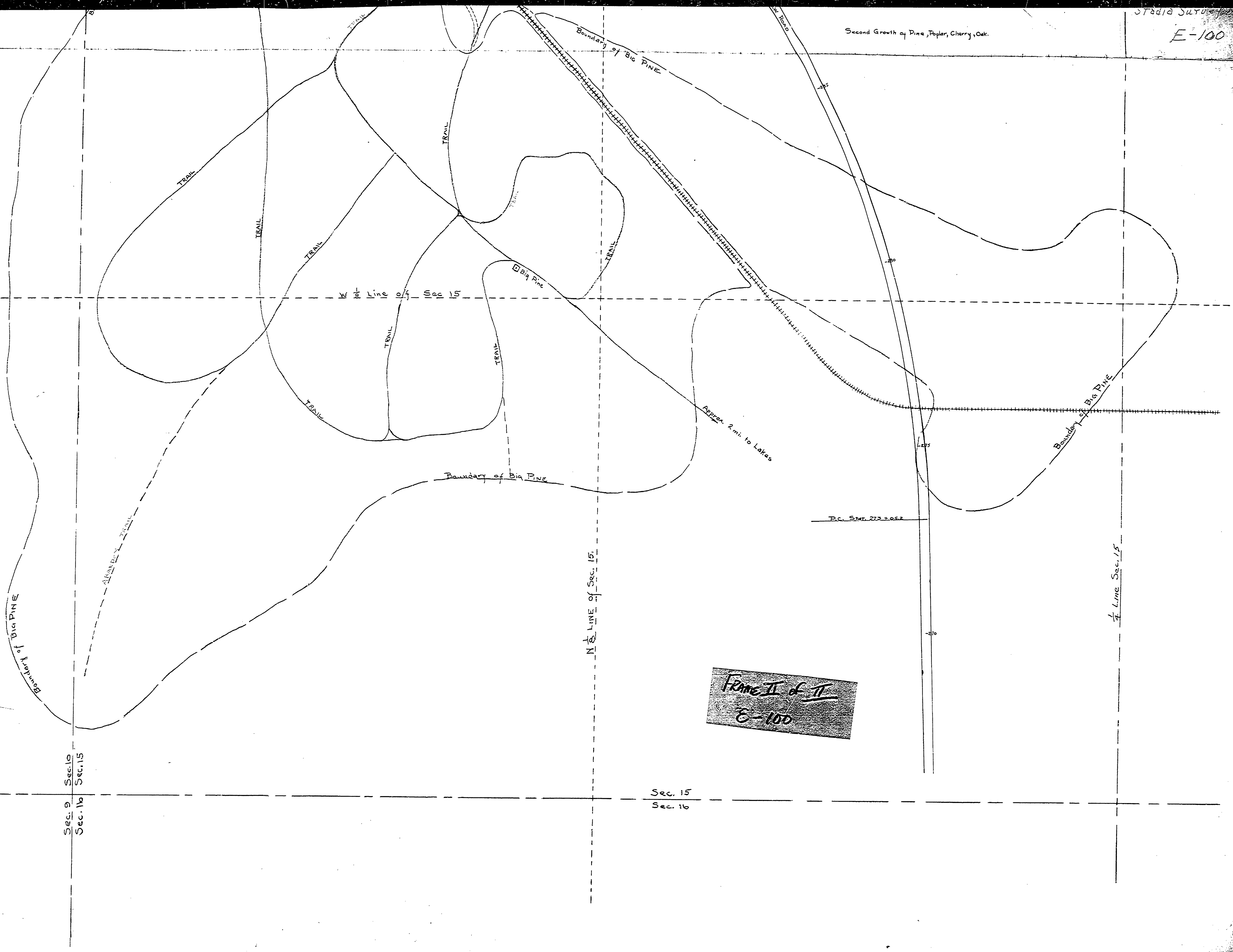


Second Growth of Pine, Poplar, Cherry, Oak.

W 1/2 LINE Sec 10

W 1/2 Line of Sec 15

2864.43 ft.



Frame II of II
E-100

Sec. 9 Sec. 10
Sec. 10 Sec. 15

Sec. 15
Sec. 16

Hartwick Pines
Crawford Pa