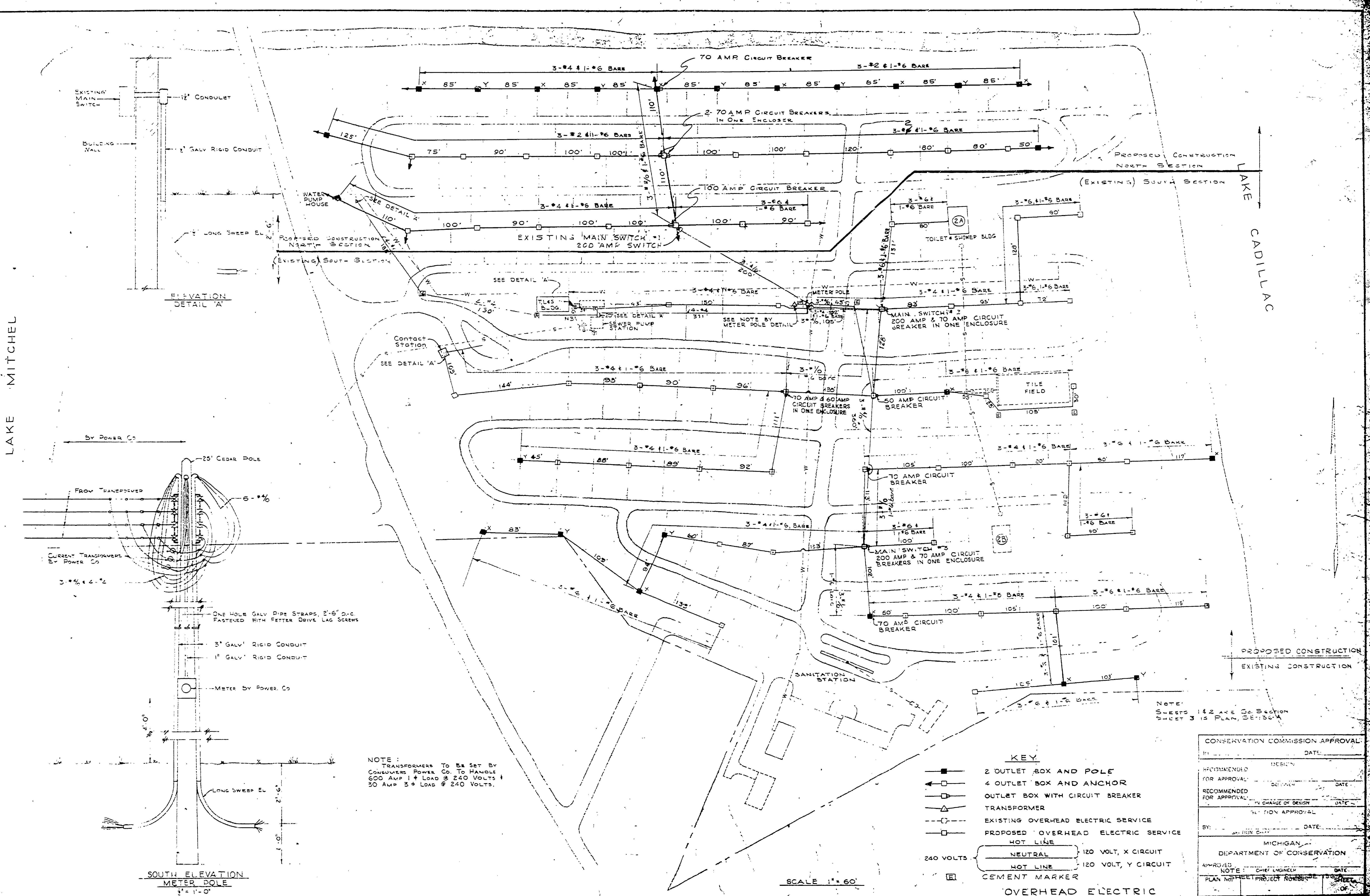
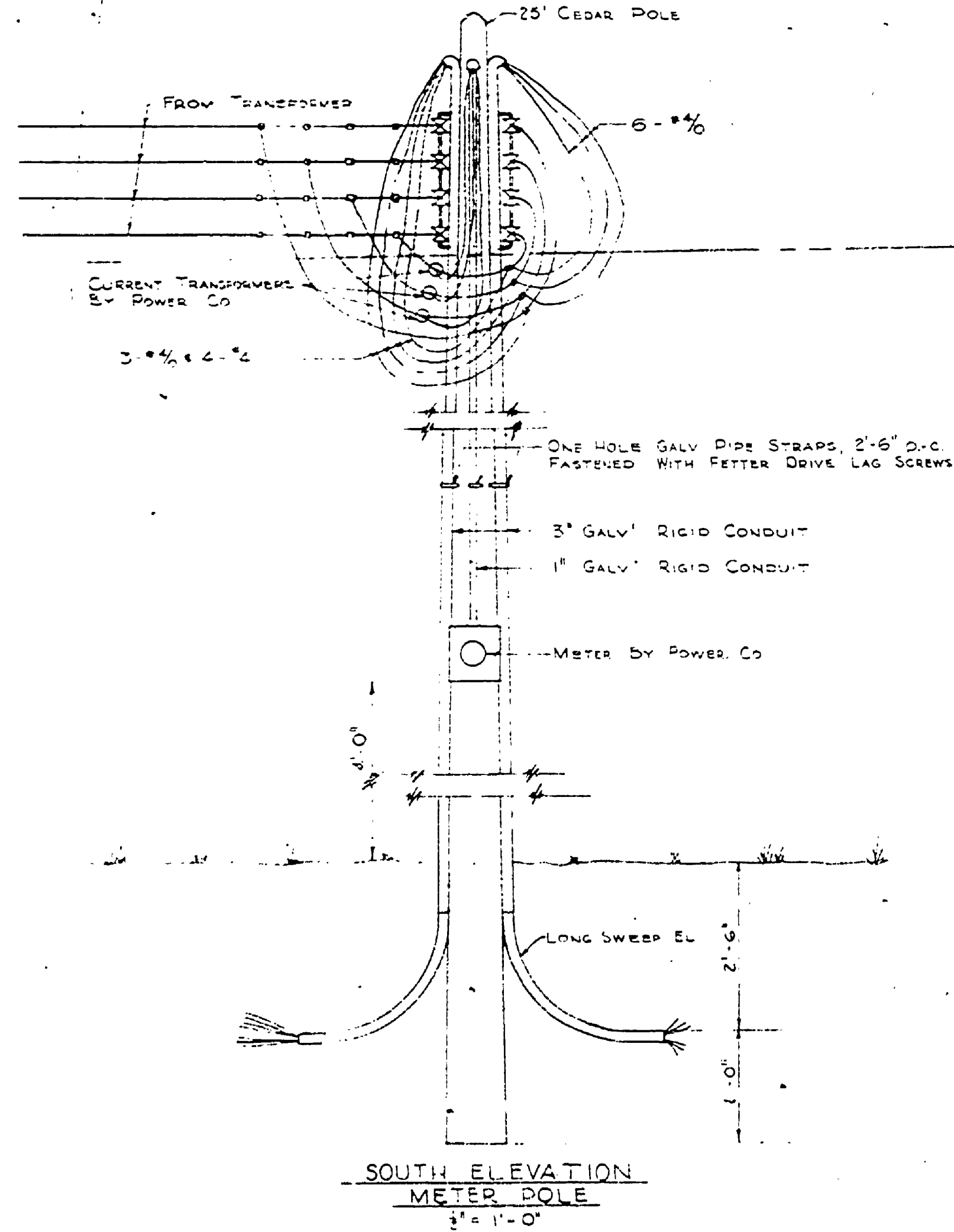


DATE	REVIEWED	DATE	APPROVED	DATE	NO.	REVISIONS
Nov. '63	ARCHITECTURAL	12/1/63		1	1	THIS SHEET REPLACES E-102 SHEET (REVISED) WHICH IS DESIGNATED FOR 30 AMP SERVICE
Nov. '63	ENGINEERING	1-21-64		2	2	16 GA. RPL. WIRE BUNDLES - AFTER CONSULTATION WITH
Dec. '63	LANDSCAPE	1-21-64		3	3	2-66 RMB. REVISED TO END ELECTRICAL
				4	4	
				5	5	
				6	6	



LAKE MITCHEL

LAKE CADILLAC



NOTE:  
TRANSFORMERS TO BE SET BY  
CONSUMERS POWER CO. TO HANDLE  
600 AMP 1 # LOAD @ 240 VOLTS +  
30 AMP 3 # LOAD @ 240 VOLTS.

- KEY**
- 2 OUTLET BOX AND POLE
  - 4 OUTLET BOX AND ANCHOR
  - OUTLET BOX WITH CIRCUIT BREAKER
  - △ TRANSFORMER
  - EXISTING OVERHEAD ELECTRIC SERVICE
  - - - PROPOSED OVERHEAD ELECTRIC SERVICE
  - HOT LINE
  - NEUTRAL
  - 240 VOLTS
  - CEMENT MARKER
- 120 VOLT, X CIRCUIT  
120 VOLT, Y CIRCUIT

NOTE:  
S-SHEETS 142 ARE GA. SECTION  
SHEET 3 IS PLAN, DE-150A

CONSERVATION COMMISSION APPROVAL:

DESIGN: \_\_\_\_\_ DATE: \_\_\_\_\_

RECOMMENDED FOR APPROVAL: \_\_\_\_\_ DATE: \_\_\_\_\_

RECOMMENDED FOR APPROVAL: \_\_\_\_\_ DATE: \_\_\_\_\_

IN CHARGE OF DESIGN: \_\_\_\_\_ DATE: \_\_\_\_\_

SECTION APPROVAL: \_\_\_\_\_ DATE: \_\_\_\_\_

BY: \_\_\_\_\_ DATE: \_\_\_\_\_

MICHIGAN DEPARTMENT OF CONSERVATION

APPROVED: \_\_\_\_\_ DATE: \_\_\_\_\_

NOTE: CHIEF ENGINEER

PLAN NO. SHEET PROJECT NUMBER: \_\_\_\_\_ SHEET \_\_\_\_\_ OF \_\_\_\_\_

SCALE 1" = 60'

MICHIGAN DEPARTMENT OF CONSERVATION  
PARKS AND RECREATION DIVISION

OVERHEAD ELECTRIC  
MITCHELL STATE PARK  
NORTH SECTION CAMPGROUND  
ELECTRICAL DISTRIBUTION SYSTEM

SHEET NO. 4 OF 2  
PLAN NO. E-102